

# **PRM-0031I**

High Performance  
Pentium Pro PCI Mainboard  
**User's Guide**



Edition 1.10  
© 1996 DTK Computer, Inc.

---

## **TRADEMARKS**

Windows, MS-DOS, and MS Word are trademarks of Microsoft Corporation.

Novell, Netware are trademarks of Novell, Inc.

Lotus, 1-2-3, and Symphony are trademarks of Lotus Development Corporation.

PC, AT, PC-DOS, OS/2 and Presentation Manager are trademarks of IBM Corporation.

UNIX is the trademark of AT&T.

Intel i82440FX and Pentium Pro are registered trademark of Intel Corp.

All other brand and product names are trademarks or registered trademarks of their respective companies.

The information presented in this publication has been carefully checked for reliability; however, no responsibility is assumed for inaccuracies, whereas, specification is subjected to change without notice.

# CONTENTS

## CHAPTER 1 INTRODUCTION

- 1.1 GENERAL SPECIFICATION
- 1.2 MAINBOARD COMPONENTS

## CHAPTER 2 MEMORY CONFIGURATION

- 2.1 SYSTEM MEMORY

## CHAPTER 3 JUMPER SETTINGS AND CONNECTORS

- 3.1 SETTING THE JUMPERS
- 3.2 CONNECTION THE MOTHERBOARD
  - 3.2.1 JUMPER PRESENTATION
  - 3.2.2 JUMPER CONVENTION OF THE MOTHERBOARD
  - 3.2.3 CONNECTOR LOCATIONS
- 3.3 CONNECTORS
  - 3.3.1 J20 - POWER SUPPLY CONNECTOR
  - 3.3.2 J5 - IrDA CONNECTOR
  - 3.3.3 J4 - KEYLOCK CONNECTOR
  - 3.3.4 J2 - TURBO LED CONNECTOR
  - 3.3.5 J7 - SPEAKER CONNECTOR
  - 3.3.6 J6 - HDD LED CONNECTOR
  - 3.3.7 J3 - RESET SWITCH CONNECTOR
  - 3.3.8 J18 - KEYBOARD CONNECTOR
  - 3.3.9 I/O CONNECTORS
  - 3.3.10 J17 - PS/2 STYLE KEYBOARD CONNECTOR (OPTIONAL)
  - 3.3.11 J18 - PS/2 STYLE MOUSE CONNECTOR (OPTIONAL)
  - 3.3.12 JP1 - SMI SWITCH
  - 3.3.13 JP3 - FACTORY TESTING JUMPER
  - 3.3.14 J12, J13 - (RESERVED FOR USB)
- 3.4 GRAPHICAL DESCRIPTIONS OF JUMPER SETTINGS
  - 3.4.1 CPU SPEED

---

**CHAPTER 4 AMI WINBIOS SETUP**

- 4.1 MOUSE SUPPORT
- 4.2 POINT & CLICK INTERFACE
- 4.3 USING KEYBOARD WITH WinBIOS SETUP
- 4.4 STARTING WinBIOS SETUP
- 4.5 WinBIOS SETUP MAIN MENU
- 4.6 SETUP
  - 4.6.1 STANDARD SETUP
  - 4.6.2 ADVANCED SETUP
  - 4.6.3 CHIPSET SETUP
  - 4.6.4 POWER MANAGEMENT SETUP
  - 4.6.5 PCI/PnP SETUP
  - 4.6.6 PERIPHERAL SETUP
- 4.7 SECURITY
  - 4.7.1 WINBIOS PASSWORD SUPPORT
  - 4.7.2 CHANGING A PASSWORD
  - 4.7.3 ANTI-VIRUS
- 4.8 UTILITY
- 4.9 DEFAULT
  - 4.9.1 ORIGINAL
  - 4.9.2 OPTIMAL
  - 4.9.3 FAIL-SAFE

**CHAPTER 5 WINBIOS POWER-ON SELF TEST**

- 5.1 BEEP CODES
- 5.2 TROUBLESHOOTING SYSTEM PROBLEMS
- 5.3 WinBIOS DISPLAYED ERROR MESSAGES
- 5.4 ISA NMI HANDLER MESSAGES

# CHAPTER 1 INTRODUCTION

The motherboard is a 4-layer, full baby AT size high-performance mainboard. It includes Intel i82440FX system chipset, NS PC87306 Super I/O controller.

## 1.1 GENERAL SPECIFICATION

### Processor

- Intel Pentium Pro series.
- The mainboard can run with following speeds:  
150, 166, 180 and 200 MHz

### Chipset

- Intel 82441FX (PCI and Memory Controller)
- Intel 82442FX (Data Bus Xcelerator)
- Intel 82371SB (PCI ISA IDE Xcelerator)
- NS PC87306 (Super I/O Controller)

### Main Memory

- Memory configurations from up to 384MB are possible using combination of 256K\*36 to 16MB\*36 SIMM module. (32Bits non-parity 72-pin SIMM Module also available).
- Support both Fast Page Mode and Extended Data Output (EDO) Mode DRAM Modules.
- Hidden DRAM Refresh for higher system performance.
- ECC (Error Checking and Correction) support (Need SIMM module with parity).

### **Multi I/O**

- On board Multi-I/O supports two serial, one parallel ports and floppy drive controller.
- Serial ports are 16550 Fast UART compatible.
- Parallel port has EPP and ECP capabilities.
- IrDA supported.
- USB supported (optional).

### **PCI IDE**

- On board supports PCI Master IDE Controller, two connectors support up to four IDE devices such as HDD, CD ROM drive and Tape Back-up drives, etc.
- PCI Master IDE controller supports PIO Mode 3 and 4 devices, I/O data transfer rate can be up to 17Mb/s. DMA mode transfer rate can be up to 22Mb/s.

### **System BIOS**

- AMI BIOS (128KB Flash EPROM).

### **Slots**

- Five PCI slots (1 shared)
- Three ISA slots (1 shared)

**Board**

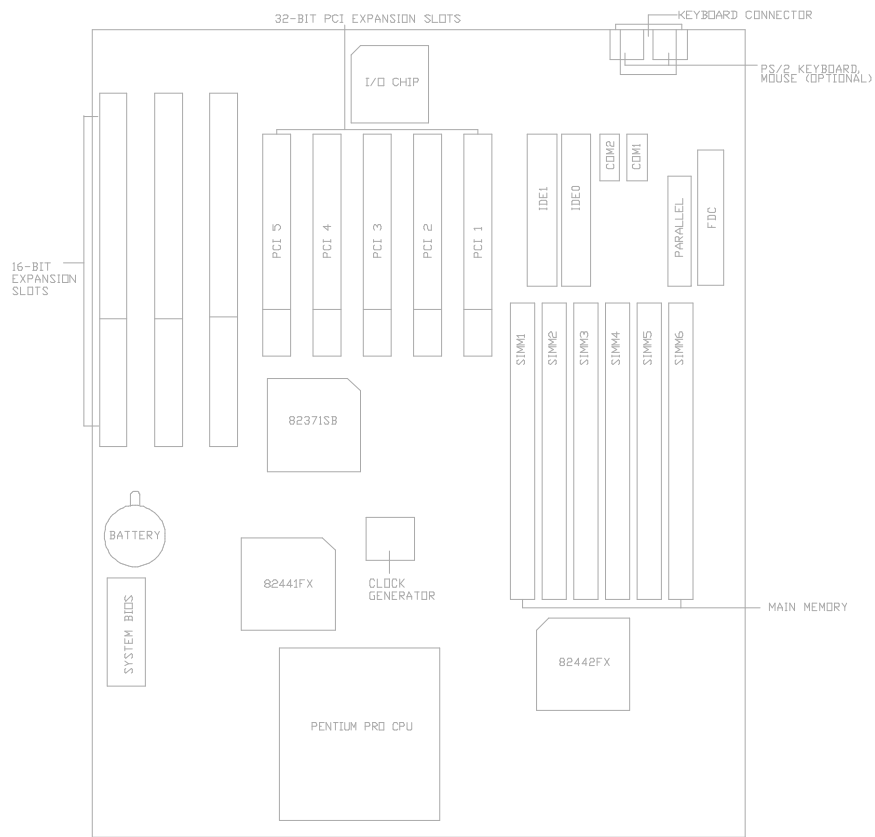
- 4 Layer

**Form Factor**

- Full Baby AT Size (220 x 330mm)

## 1.2 MAINBOARD COMPONENTS

This section gives a brief description of key components on the mainboard. Please refer to Fig 1 for component locations.



**Fig. 1 Key Components of the Mainboard**



## CHAPTER 2 MEMORY CONFIGURATION

### 2.1 SYSTEM MEMORY

The Mainboard lets user upgrade system memory via SIMM sockets on the mainboard. On-board memory is located in three banks: Bank 0, Bank 1 and Bank 2.

Two SIMM sockets are provided in each bank. User can install either 1M, 4M, 8M, 16M, 32M, 64M or 128M SIMM in each bank.

*Note: The type of SIMM1/SIMM2 must be same.  
The type of SIMM3/SIMM4 must be same.  
The type of SIMM5/SIMM6 must be same.*

Table 1 provides some typical DRAM configurations supported by the mainboard.

Bank 0 (SIMM1, 2)	Bank 1 (SIMM3, 4)	Bank 2 (SIMM5, 6)	Total Size
1Mx36 Single	None	None	8MB
None	1Mx36 Single	None	8MB
None	None	1Mx36 Single	8MB
1Mx36 Double	None	None	16MB
None	1Mx36 Double	None	16MB
None	None	1Mx36 Double	16MB
To be continue...			

**Table 1A: Memory Configuration**

<b>Bank 0 (SIMM1, 2)</b>	<b>Bank 1 (SIMM3, 4)</b>	<b>Bank 2 (SIMM5, 6)</b>	<b>Total Size</b>
4Mx36 Single	None	None	32MB
None	4Mx36 Single	None	32MB
None	None	4Mx36 Single	32MB
4Mx36 Double	None	None	64MB
None	4Mx36 Double	None	64MB
None	None	4Mx36 Double	64MB
16Mx36 Single	None	None	128MB
None	16Mx36 Single	None	128MB
None	None	16Mx36 Single	128MB
16Mx36 Double	None	None	256MB
None	16Mx36 Double	None	256MB
None	None	16Mx36 Double	256MB
1Mx36 Single	1Mx36 Single	None	16MB
1Mx36 Single	1Mx36 Single	1Mx36 Single	24MB
1Mx36 Double	1Mx36 Single	None	24MB
1Mx36 Double	1Mx36 Single	1Mx36 Single	32MB
1Mx36 Double	1Mx36 Double	None	32MB
1Mx36 Double	1Mx36 Double	1Mx36 Double	48MB
To be continue...			

**Table 1B: Memory Configuration**

<b>Bank 0</b>	<b>Bank 1</b>	<b>Bank 1</b>	<b>Total Size</b>
---------------	---------------	---------------	-------------------

(SIMM1, 2)	(SIMM3, 4)	(SIMM5, 6)	
4Mx36 Single	1Mx36 Single	None	40MB
4Mx36 Single	1Mx36 Single	1Mx36 Single	48MB
4Mx36 Single	1Mx36 Double	None	48MB
4Mx36 Single	1Mx36 Double	1Mx36 Double	64MB
4Mx36 Single	4Mx36 Single	None	64MB
4Mx36 Single	4Mx36 Single	4Mx36 Single	96MB
4Mx36 Double	1Mx36 Single	None	72MB
4Mx36 Double	1Mx36 Single	1Mx36 Single	80MB
4Mx36 Double	1Mx36 Double	None	80MB
4Mx36 Double	1Mx36 Double	1Mx36 Double	96MB
4Mx36 Double	4Mx36 Single	None	96MB
4Mx36 Double	4Mx36 Single	4Mx36 Single	128MB
4Mx36 Double	4Mx36 Double	None	128MB
4Mx36 Double	4Mx36 Double	4Mx36 Double	192MB
16Mx36 Single	1Mx36 Single	None	136MB
16Mx36 Single	1Mx36 Single	1Mx36 Single	144MB
16Mx36 Single	1Mx36 Double	None	144MB
16Mx36 Single	1Mx36 Double	1Mx36 Double	160MB
To be continue...			

**Table 1C: Memory Configuration**

<b>Bank 0 (SIMM1, 2)</b>	<b>Bank 1 (SIMM3, 4)</b>	<b>Bank 2 (SIMM5, 6)</b>	<b>Total Size</b>
------------------------------	------------------------------	------------------------------	-------------------

16Mx36 Single	4Mx36 Single	None	160MB
16Mx36 Single	4Mx36 Single	4Mx36 Single	192MB
16Mx36 Single	4Mx36 Double	None	192MB
16Mx36 Single	4Mx36 Double	4Mx36 Double	256MB
16Mx36 Single	16Mx36 Single	None	256MB
16Mx36 Single	16Mx36 Single	16Mx36 Single	384MB
16Mx36 Double	1Mx36 Single	None	264MB
16Mx36 Double	1Mx36 Single	1Mx36 Single	272MB
16Mx36 Double	1Mx36 Double	None	272MB
16Mx36 Double	1Mx36 Double	1Mx36 Double	288MB
16Mx36 Double	4Mx36 Single	None	288MB
16Mx36 Double	4Mx36 Single	4Mx36 Single	320MB
16Mx36 Double	4Mx36 Double	None	320MB
16Mx36 Double	4Mx36 Double	4Mx36 Double	384MB
16Mx36 Double	16Mx36 Single	None	384MB

Table 1D: Memory Configuration

## CHAPTER 3

## JUMPER SETTINGS AND CONNECTORS

### 3.1 SETTING THE JUMPERS

The table below summarizes the functions and settings of each jumper of the motherboard.

Function		Jumper Settings
CPU Speed Selection	150mhz Pentium Pro	JP6: open JP7: close JP8: 1-8 close, 2-7 open, 3-6 close, 4-5 close JP9: 1-3 close, 2-4 close
	166Mhz Pentium Pro	JP6: close JP7: open JP8: 1-8 open, 2-7 close, 3-6 close, 4-5 close JP9: 1-3 close, 2-4 open
To be continue...		

Table 2A: Jumper Setting

Function		Jumper Setting
<b>CPU Speed Selection</b>	180MHz Pentium Pro	JP6: open JP7: close JP8: 1-8 close, 2-7 open, 3-6 close, 4-5 close JP9: 1-3 open, 2-4 close
	200MHz Pentium Pro	JP6: close JP7: open JP8: 1-8 close, 2-7 open, 3-6 close, 4-5 close JP9: 1-3 close, 2-4 open
<b>System ROM Selection</b>	5V Flash EPROM	JP4: 2-3 close
	12V Flash EPROM	JP4: 1-2 close

**Table 2B: Jumper Setting**

## 3.2 CONNECTION THE MOTHERBOARD

Once the mainboard have been fastened into the system case, the next step is to connect the internal cables. The internal cables are wire leads with plastic female connectors that attach to the connectors. The mainboard connectors have varying numbers of pins and are the points of contact between the mainboard and other parts of the computer.

A description of each connector and its connector pins follows. See Fig. 3 for the location of the connectors on the mainboard.

*Note: Before making connectors on the board, make sure that power to the system is turned off.*

### 3.2.1 JUMPER PRESENTATION



### 3.2.2 JUMPER CONVENTION OF THE MOTHERBOARD

Different colour of jumper caps (mini-jumpers) are used on the board to represent different usage of the jumpers:

Red : CPU Clock setting

Black: Other

### 3.2.3 CONNECTOR LOCATIONS

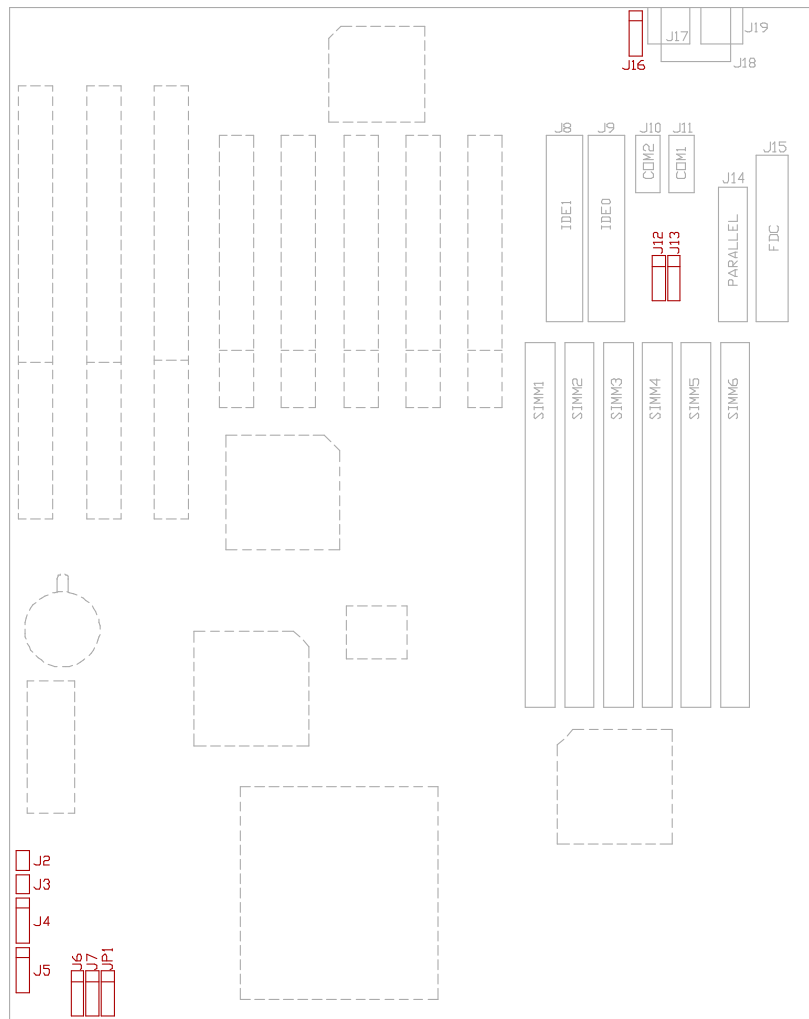


Fig. 2 Connector Location



### 3.3 CONNECTORS

#### 3.3.1 J20 - POWER SUPPLY CONNECTOR

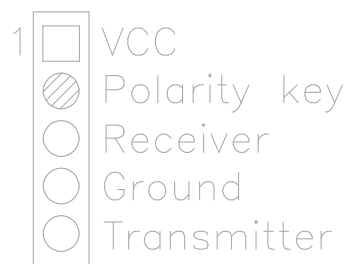
The power supply connector has two six-pin male header connectors. Plug the dual connectors from the power directly onto the board connector.

Pin	Description
1	Power Good (Orange)
2	+5 VDC (Red)
3	+12 VDC (Yellow)
4	-12 VDC (Blue)
5	Ground (Black)
6	Ground (Black)
7	Ground (Black)
8	Ground (Black)
9	-5 VDC (White)
10	+5 VDC (Red)
11	+5 VDC (Red)
12	+5 VDC (Red)

**Table 3: J20 - Power Supply Connector**

### 3.3.2 J5 - IrDA CONNECTOR

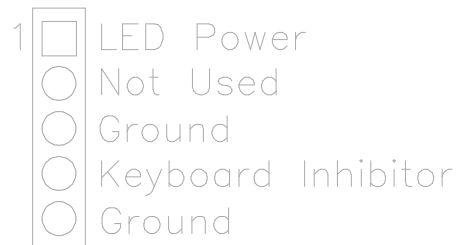
J5 is a IrDA connector that use UART2 as interface of IrDA Infrared and HP SIR.



**Fig. 3 J5 - IrDA Connector**

### 3.3.3 J4 - KEYLOCK CONNECTOR

J4 is a keylock connector that enables and disables the keyboard.



**Fig. 4 J4 - Keyboard Connector**

### 3.3.4 J2 - TURBO LED CONNECTOR

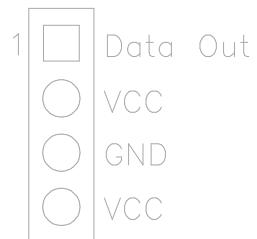
J2 is usually connected to a Turbo LED on front of the system case. If the system board select is in Turbo mode, the indicator lights during high-speed operation. This motherboard always operate at high-speed.



**Fig. 5 J2 Turbo LED**

### 3.3.5 J7 - SPEAKER CONNECTOR

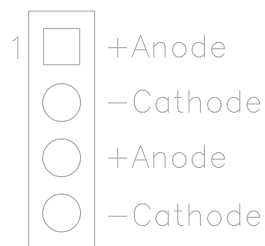
Following is the system speaker to connector J7.



**Fig. 6 J7 Speaker Connector**

### 3.3.6 J6 - HDD LED CONNECTOR

J6 is usually connected to a HDD LED on front of the system case. If the HDD is in operation, the indicator lights during operation.



**Fig. 7 J5 HDD LED**

### 3.3.7 J3 - RESET SWITCH CONNECTOR

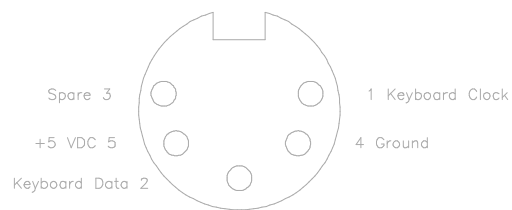
Attach the Reset switch cable to this connector. The Reset switch restarts the system.

J3	Description
	Reset
	Normal (default)

**Table 4: J3 Reset Switch Connector**

### 3.3.8 J18 - KEYBOARD CONNECTOR

A standard five-pin female DIM keyboard connector is located at the rear of the keyboard. Plug the jack on the keyboard cable into this connector.



**Fig. 8 J18 - Keyboard Connector**

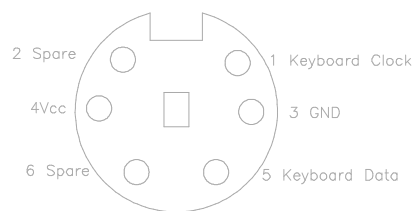
### 3.3.9 I/O CONNECTORS

J9	Primary IDE
J8	Secondary IDE
J10	Serial Port 1
J11	Serial Port 2
J14	Parallel Port
J15	FDC Connector

**Table 5: Connectors Description**

### 3.3.10 J17 - PS/2 STYLE KEYBOARD CONNECTOR (OPTIONAL)

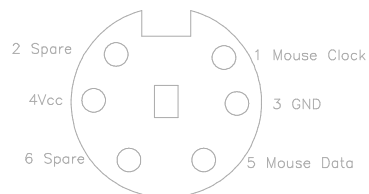
A PS/2 Standard six-pin female DIM connector for keyboard is located at left to J15.



**Fig. 9 J17 - PS/2 Keyboard Connector**

### 3.3.11 J18 - PS/2 STYLE MOUSE CONNECTOR (OPTIONAL)

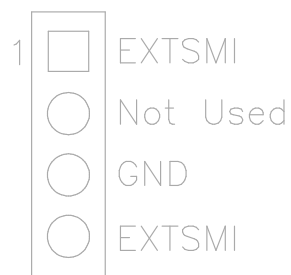
A PS/2 Standard six-pin female DIM connector for mouse is located at right the J17.



**Fig. 10 J18 - PS/2 Mouse Connector**

### 3.3.12 JP1 - SMI SWITCH

JP1 is for SMI Break Switch Setting. When JP1 is trigger from OPEN to CLOSE and back to OPEN, the system would suspend immediately.



**Fig. 11 JP1 - SMI Switch**

### 3.3.13 JP3 - FACTORY TESTING JUMPER

JP3 is for factory testing only. All the jumpers of JP3 should be opened as default.

### 3.3.14 J12, J13 - (RESERVED FOR USB)

### 3.4 GRAPHICAL DESCRIPTIONS OF JUMPER SETTINGS

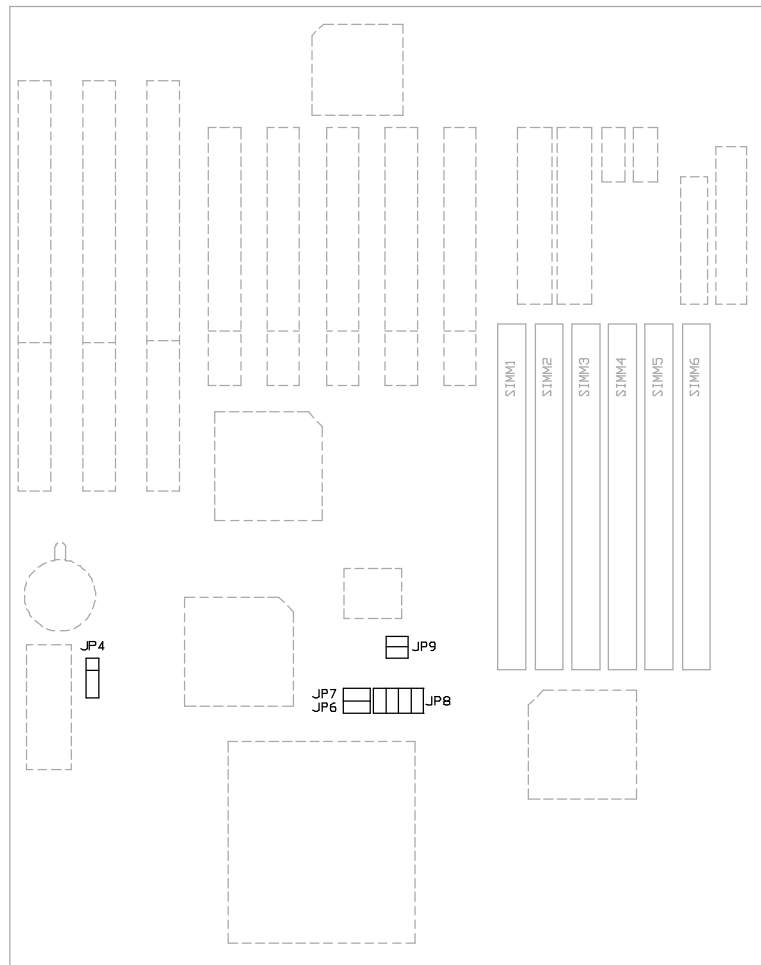
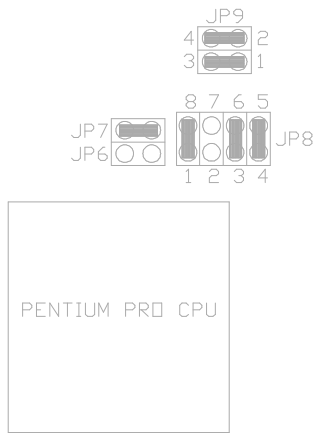


Fig. 12 Jumper Location



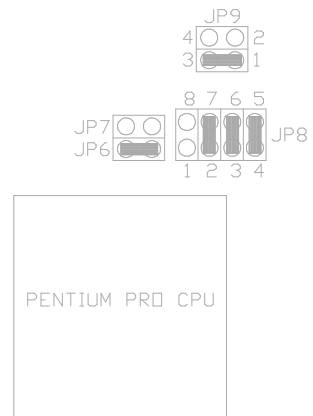
### 3.4.1 CPU SPEED

- 150Mhz Pentium Pro CPU



**Fig. 13A CPU Speed**

- 166Mhz Pentium Pro CPU



**Fig. 13B CPU Speed**

3. 180Mhz Pentium Pro CPU

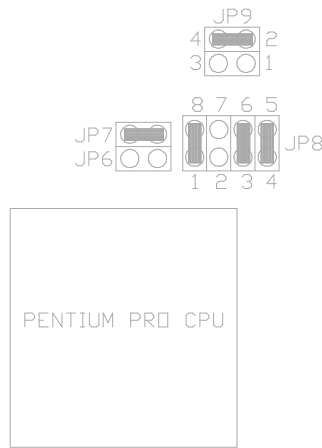


Fig. 13C CPU Speed

4. 200Mhz Pentium Pro CPU

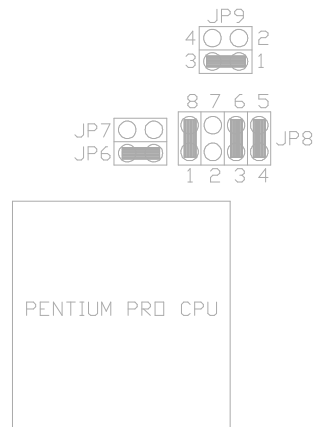


Fig. 13D CPU Speed



---

## CHAPTER 4      AMI WinBIOS SETUP

WinBIOS Setup has an easy-to-use graphical user interface that makes system configuration easy and simple. The configuration options in WinBIOS Setup are all icon-based. All settings for each option are displayed for easy access. All WinBIOS Setup functions can be accessed by mouse, keyboard, or pen. Pen access must be customized for each hardware platform.

### 4.1      MOUSE SUPPORT

The following types of mouse devices are supported:

- PS/2-type mice,
- bus mice that use IRQs 3, 4, or 5 (IRQ2 is not supported),
- Microsoft-compatible mice (the M, V, W Series using the M and M+ protocols), and
- Logitech C-series-compatible mice using the MM protocol.

### 4.2      POINT & CLICK INTERFACE

WinBIOS Setup uses the familiar point and click navigation technique. The end user can point with the mouse anywhere on the screen, click the left mouse button, and WinBIOS Setup control is transferred to the new location. The previous window is closed.

WinBIOS Setup can be accessed via keyboard, mouse, or pen. The mouse click functions are:

- single click to change or select both global and current fields,
- double clicks to perform an operation in the selected field, and
- single click on the top left corner of any window would exit from it. When exit from the Main Setup window, WinBIOS will prompt the user to save all changes.

All parameters that have been changed will automatically be saved, pending the selection on the exit screen.

### 4.3 USING KEYBOARD WITH WinBIOS SETUP

WinBIOS Setup has a built-in keyboard driver that uses simple keystroke combinations:

Keystroke	Function
<Tab>	Move to the next window or field.
→, ←, ↑, ↓	Move to the next field to the right, left, above, or below.
<Enter>	Select in the current field.
<Esc>	Closes the current operation and return to previous level.
<PgUp>	Returns to the previous page.
<PgDn>	Advances to the next page.
<Home>	Returns to the beginning of the text.
<End>	Advances to the end of the text.
<Alt> <H>	Access a help window.
<Alt> <Spacebar>	Exit WinBIOS Setup.
Alphabetic keys	A to Z are used in the Virtual Keyboard, and are not case-sensitive.
Numeric keys	0 to 9 are used in the Virtual Keyboard and Numeric Keypad.

Table 6

## 4.4 STARTING WinBIOS SETUP

As POST executes, press <Del> to run WinBIOS Setup. After that the hourglass icon tells the user to wait until a process completes.

## 4.5 WinBIOS SETUP MAIN MENU

The WinBIOS Setup main menu, shown below, is organized into four windows. Each window corresponds to a section.

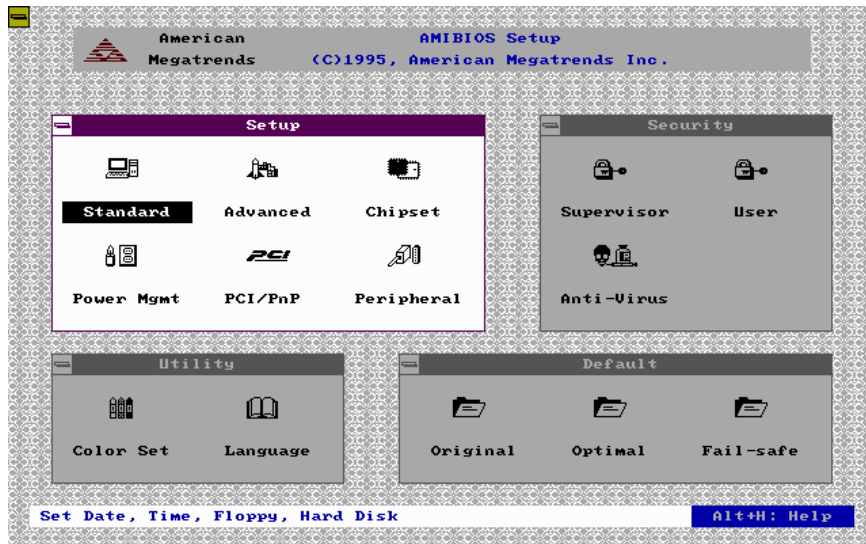


Fig. 14 Main Menu

Each section contains several icons. Clicking on each icon activates a specific function. The sections are:

- Setup** contains six icons that permit user to set system configuration options such as date, time, hard disk type, floppy type, and many others.
- Security** contains three icons that control WinBIOS security features.

**Utility** contains two icons that perform system functions.

**Default** contains three icons that permit user to select a group of settings for all WinBIOS Setup options.

Each WinBIOS Setup option has two default settings. The type of defaults are:

**Optimal** these settings provide the best performance characteristics.

**Fail-Safe** these settings are more likely to configure a workable computer when something is wrong. If user cannot boot the computer successfully, select the Fail-Safe WinBIOS setup options and try to diagnose the problem after the computer boots. These settings do not provide optimal performance.

## 4.6 SETUP

WinBIOS Setup can have up to six separate screens. Different types of system configuration parameters are set on each screen.

Type	Description
Standard Setup	Set the time and date. Configure disk drive.
Advanced Setup	Configure basic system performance parameters.
Chipset Setup	Configure features specific to the chipset used in the computer.
Power Management Setup	Configure power conservation features.
PCI/PnP Setup	Configure PCI and Plug-and-Play features.
Peripheral Setup	Configure I/O support.

**Table 7 : Setup Description**

### 4.6.1 STANDARD SETUP

The Standard Setup screen follows.

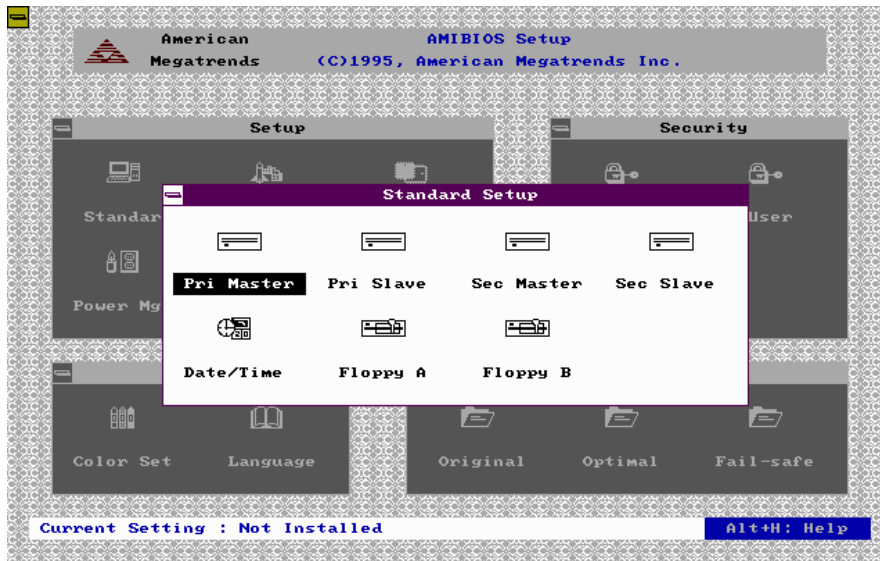


Fig. 15 Standard Setup Menu



The following are the description for the options located in the Standard Setup window.

**Configuring IDE Drives:** If the hard disk drive to be configured is an IDE drive, select the appropriate drive icon (Pri Master, Pri Slaves, Sec Master, or Sec Slave). Choose the **Type** parameter and select Auto.

AMIBIOS automatically detects the IDE drive parameters and displays them. Click on the OK button to accept these parameters.

Click on **LBA/Large Mode** and choose *On* to enable support for IDE drives with capacities greater than 528 MB.

Click on **Block Mode** and choose *On* to support IDE drives that use Block Mode.

Click on **32Bit Mode** and click on *On* to support IDE drives that permit 32-bit accesses.

Click on **PIO Mode** to select the IDE Programmed I/O mode. The settings are *Auto, 0, 1, 2, 3, 4, or 5*. Click on *Auto* to allow AMIBIOS to automatically choose the PIO mode that the IDE drive being configured uses. If you select *0-5* you must make absolutely certain that you are selecting the PIO mode supported by the IDE drive being configured.

**Date/Time Configuration:** Select the Standard option. Select the Date and Time icon. The current values for each category are displayed. Enter new values through the keyboard.

**Floppy Drive A:/Floppy Drive B: :** Move the cursor to these fields via  $\uparrow$  and  $\downarrow$  and select the floppy type. The settings are *360KB 5¼", 1.2MB 5¼", 720KB 3½", 1.44MB 3½", 2.88MB 3½"* or *Not Installed*.

## 4.6.2 ADVANCED SETUP

The Advanced Setup options described in this section are the standard options as shown on the following screen.

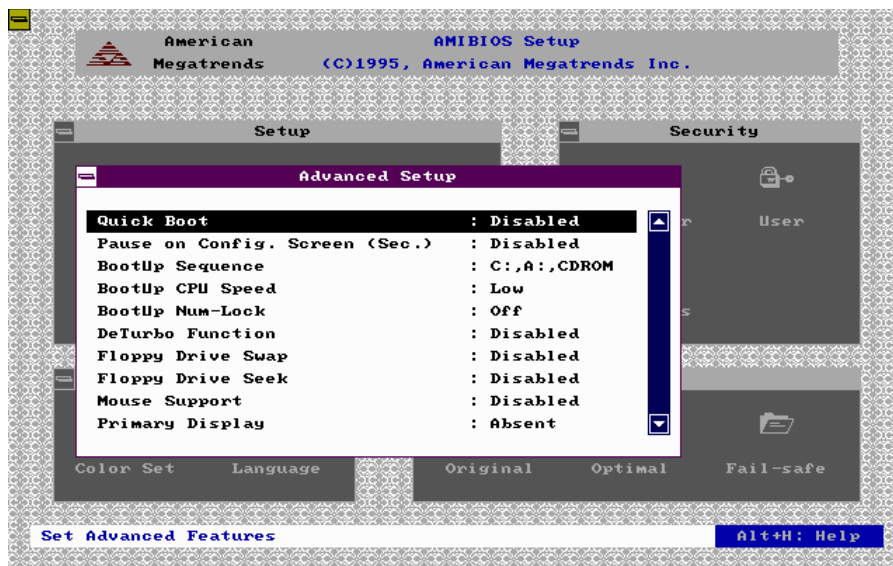


Fig. 16 Advanced Setup Menu

**Quick Boot:** Set this option to *Enabled* to instruct AMIBIOS to boot quickly when the computer is powered on. The settings are:

Setting	Description
Disabled	<p>AMIBIOS test all system memory. AMIBIOS waits up to 40 seconds for a READY signal from the IDE hare disk drive. AMIBIOS waits for .5 seconds after sending a RESET signal to the IDE drive to allow the IDE drive time to get ready again. AMIBIOS checks for a &lt;Del&gt; key press and runs WINBIOS Setup if the key has been pressed.</p>
Enabled	<p>AMIBIOS does not test system memory above 1 MB.</p> <p>AMIBIOS does not wait up to 40 seconds for a READY signal from the IDE hard disk drive. If a READY signal is not received immediately from the IDE drive, AMIBIOS does not configure that drive. AMIBIOS does not wait for .5 seconds after sending a RESET signal to the IDE drive to allow the IDE drive time to get ready again.</p> <p>You cannot run WINBIOS Setup at system boot, because there is no delay for the <i>Hit &lt;Del&gt; to run Setup</i> message.</p>

**Table 8**

The Optimal and Fail-Safe default settings are *Enabled*.

**BootUp Sequence:** This option sets the sequence of boot drives (floppy drive A:, hard disk drive C:, or a CD-ROM drive) that the AMIBIOS attempts to boot from after AMIBIOS POST completes. The setting are *C:;A:;CDROM*, *CDROM,C:;A:*, or *A:;C:;CDROM*, etc.

The default settings are *A:;C:;CDROM*

**BootUp CPU Speed:** This option lets you specify the CPU speed at system boot. The settings are *Low* or *High*. The Optimal and Fail-Safe default settings are *High*.

**BootUp NumLock:** Set this option to *Off* to turn the Num Lock key off when the computer is booted so you can use the arrow keys on both the numeric keypad and the keyboard. The settings are *On* or *Off*. The default settings are *On*.

**Floppy Drive Swap:** Set this option to *Enabled* to permit drives A: and B: to be swapped. The settings are *Enabled* or *Disabled*. The default settings are *Disabled*.

**Floppy Disk Seek:** Set this option to *Enabled* to specify that floppy drive A: will perform a seek operation at system boot. The settings are *Disabled* or *Enabled*. The Optimal and Fail-Safe default settings are *Disabled*.

**Mouse Support:** When this option is set to *Enabled*, AMIBIOS supports a PS/2-type mouse. The settings are *Enabled* or *Disabled*. The default settings are *Disabled*.

**Primary Display:** This option specifies the type of display monitor and adapter in the computer. The settings are *Mono*, *CGA40x25*, *CGA80x25*, *EGA/VGA*, or *Absent*. The Optimal and Fail-Safe default settings are *EGA/VGA*.

**Password Check:** This option enables password checking every time the computer is powered on or every time WINBIOS Setup is executed. If *Always* is chosen, a user password prompt appears every time the computer is turned on. If *Setup* is chosen, the password prompt appears if WINBIOS is executed.

**Parity Check:** Set this option to *Enabled* to check the parity of all system memory. The settings are *Disabled* or *Enabled*. The Optimal and Fail-Safe default settings are *Disabled*.

**OS/2 Compatible Mode:** Set this option to *Enabled* to permit AMIBIOS to run with IBM OS/2. The settings are *Enabled* or *Disabled*. The default settings are *Disabled*.

**Internal Cache:** This option specifies the caching algorithm used for L1 internal cache memory. The settings are:

Setting	Description
<i>Disabled</i>	Neither L1 internal cache memory on the CPU or L2 secondary cache memory is enabled.
<i>WriteBack</i> (default)	Use the write-back caching algorithm.
<i>WriteThru</i>	Use the write-through caching algorithm.

**Table 9**

**External Cache:** This option specifies the caching algorithm used for L2 secondary (external) cache memory. The settings are:

Setting	Description
<i>Disabled</i>	Neither L1 internal cache memory on the CPU or L2 secondary cache memory is enabled.
<i>Enabled</i>	Use the write-back caching algorithm.

**Table 10**

Optimal default setting is *Enabled*. The Fail-Safe default setting is *Disabled*.

**System BIOS Shadow Cacheable:** When this option is set to *Enabled*, the contents of the F0000h system memory segment can be read from or written to L2 secondary cache memory. The contents of the F0000h memory segment are always copied from the BIOS ROM to system RAM for faster execution. The settings are *Enabled* or *Disabled*. The Optimal default setting is *Enabled*. The Fail-Safe default setting is *Disabled*.

**C000,16K Shadow/C400,16K Shadow/C800,16K Shadow/CC00,16K Shadow/D000,16K Shadow/D400,16K Shadow/D800,16K Shadow:** These options control the location of the contents of the 16KB of ROM beginning at the specified memory location. If no adaptor ROM is using the named ROM area, this area is made available to the local bus. The settings are:

Setting	Description
<i>Enabled</i>	The contents of C0000h - C3FFFh are written to the same address in system memory (RAM) for faster execution.
<i>Cache</i>	The contents of the named ROM area are written to the same address in system memory (RAM) for faster execution, if an adaptor ROM will be using the named ROM area. Also, the contents of the RAM area can be read from and written to cache memory.
<i>Disabled</i>	The video ROM is not copied to RAM. The contents of the video ROM cannot be read from or written to cache memory.

**Table 11**

The default setting is *Disabled*.

### 4.6.3 CHIPSET SETUP

The Chipset Setup options described in this section are the standard options as shown on the following screen.

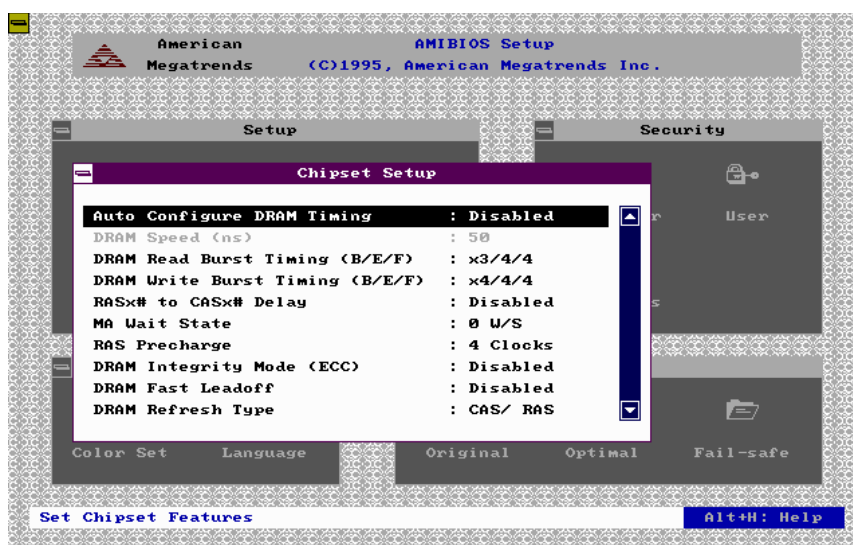


Fig. 17 Chipset Setup Menu

**Auto Configure DRAM Timing:** Specify the method of configuring DRAM timing.

Enabled	Set the DRAM Timing Parameter according to the DRAM speed.
Disabled	Set the DRAM Timing Parameter manually.

Table 12

The Optimal default setting is Enabled. The Fail-Safe default setting is default.

**DRAM Speed (ns):** Specify the RAS access speed of the SIMMs installed in the motherboard as system memory. The settings are *50ns*, *60ns* or *70ns*. The default is *70ns*.

**DRAM Read Burst Timing (B/E/F):** The DRAM read burst timing depend on the type of DRAM on a per-row basis. Slower rates may be required to support slower memories. The setting are *x1/2/3*, *x2/2/3*, *x2/3/4* and *x3/4/4*. The Optimal default setting is *x2/3/4*. The Fail-Safe default setting is *x3/4/4*.

**DRAM Write Burst Timing (B/E/F):** The DRAM write burst timing depend on the type of RAM on a per-row basis. Slower rates may be required to support slower memories. The setting are *x2/2/3*, *x3/3/3*, *x3/3/4* and *x4/4/4*. The Optimal default setting is *x3/3/3*. The Fail-Safe default setting is *x4/4/4*.

**RAS# To CAS# Delay:** When DRAM is refreshed, both rows and columns are addressed separately. This setup item allows a delay time between the assertion of RAS# and CAS#. The settings are *Disabled* or *Enabled*. The Optimal and Fail-Safe default setting is *Enabled*.

**MA Wait State:** When this option is *1ws*, one additional wait state is inserted before the assertion of the first MA and CAS#/RAS# during DRAM read or write leadoff cycles. The affects pages hit, row miss and page miss cases. The settings are *0ws* or *1ws*. The Optimal and Fail-Safe default settings are *1ws*.

**DRAM Refresh Type:** This option specify the DRAM refresh type. The settings are *CAS/RAS* or *RAS only*. The Optimal and Fail-Safe default setting is *RAS only*.

**DRAM Refresh Queue:** When disabled, the Internal DRAM refresh queue is disabled and all refreshes are priority requests. The settings are *Enabled* and *Disabled*. The Optimal and Fail-Safe settings are *Enabled*.

**Fixed Memory Hole:** Use this option to specify an area in memory that cannot be addressed on the ISA bus. The settings are *Disabled*, *512-640KB*, or *15-16MB*. The default setting is *Disabled*.



**8-Bit I/O Recovery Time:** This option specifies the length of the delay (in SYSCLKs) inserted between consecutive 8-bit I/O operations. The settings are 1, 2, 3, 4, 5, 6, 7, 8 or *Disabled*. The Optimal and Fail-Safe default settings are 1.

**16-Bit I/O Recovery Time:** This option specifies the length of the delay (in SYSCLKs) inserted between consecutive 8-bit I/O operations. The settings are 1, 2, 3, 4, or *Disabled*. The Optimal and Fail-Safe default settings are 1.

#### 4.6.4 POWER MANAGEMENT SETUP

The Power Management Setup options described in this section are the standard options as shown on the following screen.

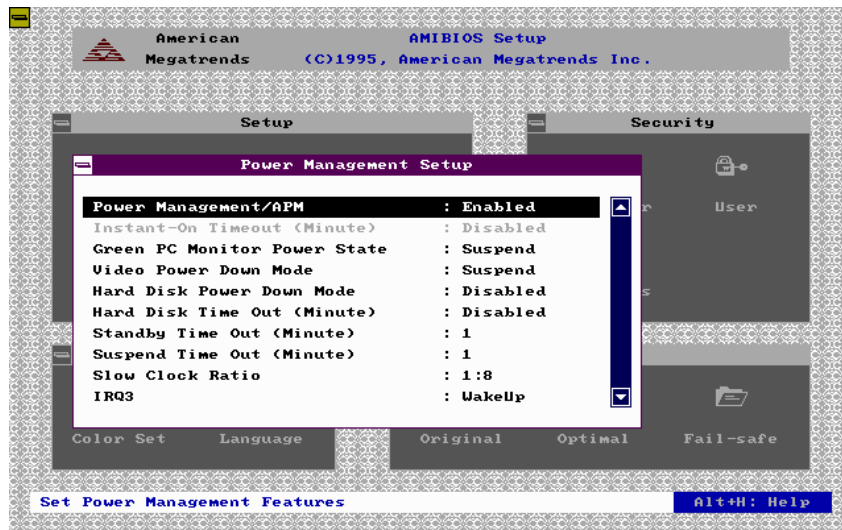


Fig. 18 Power Management Setup Menu

**Power Management/APM:** Set this option to *Enabled* to enable the power management and APM (Advanced Power Management) features.

The settings are *Enabled*, *Inst-On* or *Disabled*. The default settings are *Disabled*.

**Instant-on Timeout:** Set this option to *Enabled* to allow the computer to go to full power on mode when leaving a power-conserving state. *This option is only available if supported by the computer hardware.* AMIBIOS uses the RTC Alarm function to wake the computer at a prespecified time. The settings are *Disabled*, *1 Min*, and all one minute intervals up to and including *15 Min*. The default settings are *Disabled*.

**Green PC Monitor Power State:** This option specifies the power management state that the Green PC-compliant video monitor enters after the specified period of display inactivity has expired. The settings are *Off*, *Standby*, or *Suspend*. The default settings are *Standby*.

**Video Power Down Mode:** This option specifies the power management state that the video subsystem enters after the specified period of display inactivity has expired. The settings are *Disabled*, *Standby*, or *Suspend*. The default settings are *Standby*.

**Hard Disk Power Down Mode:** This option specifies the power management state that the hard disk drive enters after the specified period of display inactivity has expired. The settings are *Disabled*, *Standby*, or *Suspend*. The default settings are *Disabled*.

**Hard Disk Timeout (Minute):** This option specifies the length of a period of hard disk inactivity. When this period expires, the hard disk drive enters the power-conserving mode specified in the **Hard Disk Power Down Mode** option described on the previous page. The settings are *Disabled*, *1 Min(minutes)*, and all one minute intervals up to and including *15 Min*. The default settings are *Disabled*.

**Standby Timeout (Minute):** This option specifies the length of the period of system inactivity when the computer is in Full-On mode before the computer is placed in Standby mode. In Standby mode, some power use is curtailed. The settings are *Disabled*, *1 Min*, *2 Min* and all one minute intervals up to and including *15 Min*. The default settings are *Disabled*.

**Suspend Timeout (Minute):** This option specifies the length of the period of system inactivity when the computer is already in Standby mode before the computer is placed in Suspend mode. In Suspend mode, nearly all power use is curtailed. The settings are *Disabled*, *1 Min*, *2 Min*, and all one minute intervals up to and including *15 Min*. The default settings are *Disabled*.

**Slow Clock Ratio:** This option specifies the speed at which the system clock runs in power saving modes. The settings are expressed as a ratio between the normal clock speed and the power down clock speed. The settings are *1:1*, *1:2* (half as fast as normal), *1:4* (the normal clock speed), *1:8*, *1:16*, *1:32*, *1:64*, or *1:128*. The default setting is *1:8*.

**IRQ3/IRQ4/IRQ5/IRQ7/IRQ9/IRQ10/IRQ11/IRQ12/IRQ13/IRQ14/IRQ15:**

These options enable event monitoring. When the computer is in a power saving mode, activity on the named interrupt request line is monitored by AMIBIOS. When any activity occurs, the computer enters Full On mode.

Each of these options can be set to *Ignore*, *Monitor*, *Wakeup* or *Both*. The default setting for all options is *Ignore* except IRQ12 is *Both* and IRQ 14/15 are *Monitor*.

## 4.6.5 PCI/PnP SETUP

PCI/PnP Setup options are displayed by choosing the PCI/PnP Setup Icon from the Setup Menu. The standard option is shown on the following screen.

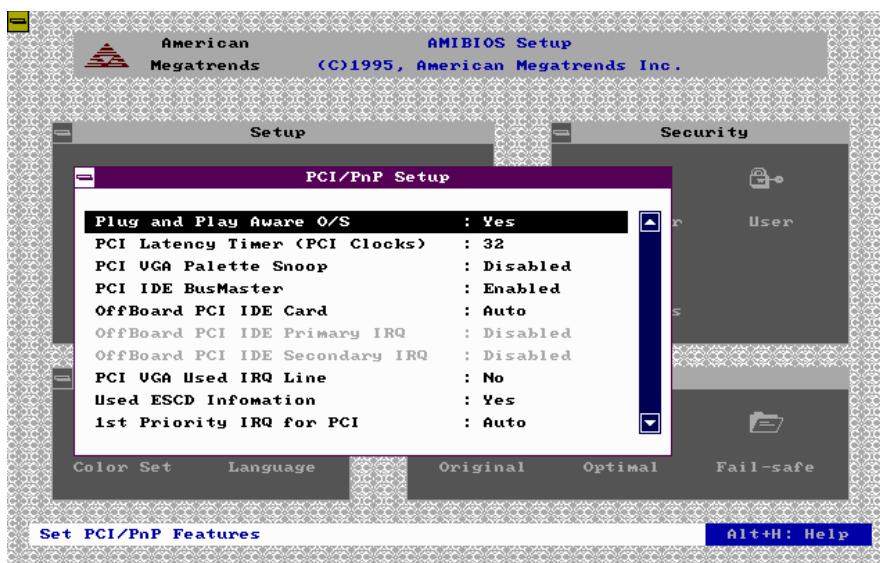


Fig. 19 PCI/PnP Setup Menu

**Plug and Play Aware OS:** Set this option to *Yes* if the operating system installed in the computer is Plug and Play-aware. AMIBIOS only detects and enables PnP ISA adapter cards that are required for system boot. The Windows 95 operating system detects and enables all other PnP-aware adapter cards. Windows 95 is PnP-aware. Set this option to *No* if the operating system (such as DOS, OS/2, Windows 3.x) does not use PnP. *You must set this option correctly or PnP-aware adapter cards installed in your computer will not be configured properly.* The settings are *No* or *Yes*. The Optimal and Fail-Safe default settings are *No*.

**PCI Latency Timer (PCI Clocks):** This option sets latency of all PCI devices on the PCI bus. The settings are in units equal to PCI clocks. The settings are *32, 64, 96, 128, 160, 192, 224, or 248*. The Optimal and Fail-Safe default settings are *64*.

**PCI VGA Palette Snoop:** This option must be set to *Enabled* if any ISA adapter card installed in the computer requires VGA palette snooping. The settings are *Disabled* or *Enabled*. The Optimal and Fail-Safe default settings are *Disabled*.

**PCI IDE BusMaster:** Set this option to *Enabled* to specify that the IDE controller on the PCI local bus has bus mastering capability. The settings are *Disabled* or *Enabled*. The Optimal and Fail-Safe default settings are *Disabled*.

**OffBoard PCI IDE Card:** This option specifies if an offboard PCI IDE controller adapter card is used in the computer. You must also specify the PCI expansion slot on the motherboard where the offboard PCI IDE controller card is installed. If an offboard PCI IDE controller is used, the onboard IDE controller on the motherboard is automatically disabled. The settings are *Auto, Slot1, Slot2, Slot3, Slot4, Slot5* or *Slot6*.

If *Auto* is selected, AMIBIOS automatically determines the correct setting for this option. The Optimal and Fail-Safe default settings are *Auto*.

**OffBoard PCI IDE Primary IRQ:** This option specifies the PCI interrupt used by the primary IDE channel on the offboard PCI IDE controller. The settings are *Disabled, INTA, INTB, INTC, INTD, or Hardwired*. The Optimal and Fail-Safe default settings are *Disabled*.

**OffBoard PCI IDE Secondary IRQ:** This option specifies the PCI interrupt used by the secondary IDE channel on the offboard PCI IDE controller. The settings are *Disabled, INTA, INTB, INTC, INTD, or Hardwired*. The Optimal and Fail-Safe default settings are *Disabled*.

**Assign IRQ to PCI VGA Card:** Set this option to *Yes* if the PCI VGA used IRQs. AMIBIOS will assign an IRQ to PCI VGA adapter cards. Set this option to *No* if the PCI VGA card do not use IRQ. The settings are *Yes* or *No*. The Optimal and Fail-Safe default settings are *Yes*.

**DMA Channel 0/1/3/5/6/7:** These options specify the DMA Channels are used on. These options allow you to specify DMA Channels for use by legacy ISA adapter cards.

These options determine if AMIBIOS should remove a DMA from the pool of available DMAs passed to BIOS configurable devices. The available DMA pool is determined by reading the ESCD NVRA. If more DMAs must be removed from the pool, the end user can use these *PnP* setup options to remove the DMA by assigning the option to the *ISA/EISA* setting. Onboard I/O is configurable by AMIBIOS. The DMAs used by onboard I/O are configured as *PnP*.

The settings are *PnP* or *ISA/EISA*. The Optimal and Fail-Safe default settings are *PnP*.

**IRQ3/IRQ4/IRQ5/IRQ7/IRQ9/IRQ10/IRQ11/IRQ12/IRQ14/IRQ15:** These options specify the bus that the named interrupt request lines (IRQs) are used on. These options allow you to specify IRQs for use by legacy ISA adapter cards.

These options determine if AMIBIOS should remove an IRQ from the pool of available IRQs passed to BIOS configurable devices. The available IRQ pool is determined by reading the ESCD NVRA. If more IRQs must be removed from the pool, the end user can use these PCI/PnP Setup options to remove the IRQ by assigning the option to the *ISA/EISA* setting. Onboard I/O is configurable by AMIBIOS. The IRQs used by onboard I/O are configured as *PCI/PnP*.

The settings are *PCI/PnP* or *ISA/EISA*. The Optimal and Fail-Safe default settings are *PCI/PnP*.

**Reserved Memory Size:** This option specifies the size of the memory area reserved for legacy ISA adapter cards.

The settings are *Disabled*, *16K*, *32K*, or *64K*. The Optimal and Fail-Safe default settings are *Disabled*.

**Reserved Memory Address:** This option specifies the beginning address (in hex) of the reserved memory area. The specified ROM memory area is reserved for use by legacy ISA adapter cards.

The settings are *C0000*, *C4000*, *C8000*, *CC000*, *D0000*, *D4000*, *D8000*, or *DC000*. The Optimal and Fail-Safe Default settings are *C0000*.

#### 4.6.6 PERIPHERAL SETUP

Peripheral Setup options are displayed by choosing the Peripheral Setup icon from the WINBIOS Setup main menu. All Peripheral Setup options are described in this section.

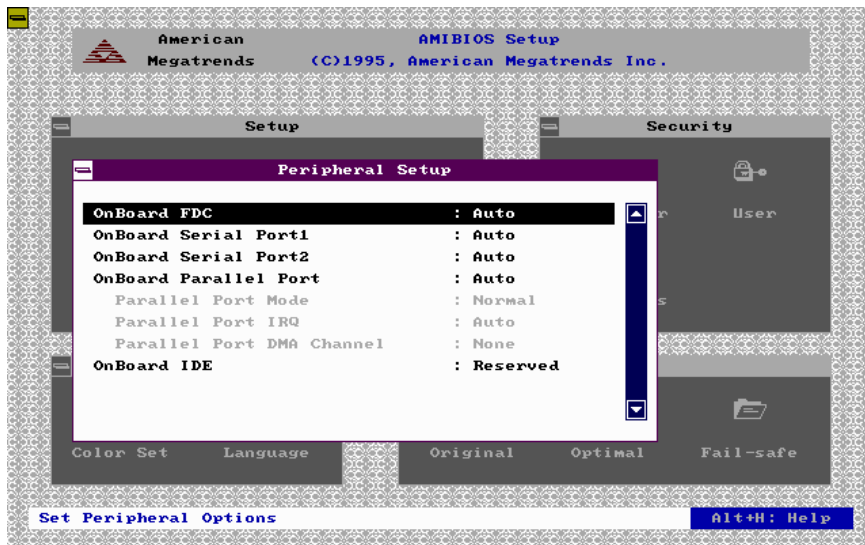


Fig. 20 Peripheral Setup Menu

**Onboard FDC:** This option enables the floppy drive controller on the motherboard. The settings are *Enabled*, *Disabled* or *Auto*. The Optimal and Fail-Safe default settings are *Auto*.

**Onboard Serial Port1:** This option enables serial port 1 on the motherboard and specifies the base I/O port address for serial port 1.

The settings are *3F8h*, *2F8h*, *3E8h*, *2E8h*, *Disabled* or *Auto*. The Optimal and Fail-Safe default settings are *Auto*.

**Onboard Serial Port2:** This option enables serial port 2 on the motherboard and specifies the base I/O port address for serial port 2.

The settings are *3F8h*, *2F8h*, *3E8h*, *2E8h*, *Disabled* or *Auto*. The Optimal and Fail-Safe default settings are *Auto*.

**Onboard Parallel Port:** This option enables the parallel port on the motherboard and specifies the parallel port base I/O port address. The settings are *378h*, *278h*, *3BCh*, *Disabled* or *Auto*.

The Optimal and Fail-Safe default settings are *Auto*.

**Parallel Port Mode:** This option specifies the parallel port mode. ECP and EPP are both bidirectional data transfer schemes that adhere to the IEEE P1284 specifications.



The settings are:

Setting	Description
<i>Normal</i>	The normal parallel port mode is used. This is the default setting.
<i>Bi-Dir</i>	Use this setting to support bidirectional transfers on the parallel port.
<i>EPP</i>	The parallel port can be used with devices that adhere to the Enhanced Parallel Port (EPP) specification. EPP uses the existing parallel port signals to provide asymmetric bidirectional data transfer driven by the host device.
<i>ECP</i>	The parallel port can be used with devices that adhere to the Extended Capabilities Port (ECP) specification. ECP uses the DMA protocol to achieve transfer rates of approximately 2.5 Mbs. ECP provides symmetric bidirectional communications.

**Table 13**

**Parallel Port IRQ:** This option is only available if the setting for the Onboard Parallel Port option is a *378h*, *278h* or *3BCh*. The settings are *5* or *7*.

**Parallel Port DMA Channel:** This option is only available if the setting for the **Parallel Port Mode** option is *ECP*. The settings are *0*, *1*, or *3*.

**Onboard IDE:** This option specifies the onboard IDE controller channels that will be used. The settings are *Primary*, *Secondary*, *Both*, or *Disabled*. The Optimal and Fail-Safe default settings are *Both*.

## 4.7 SECURITY

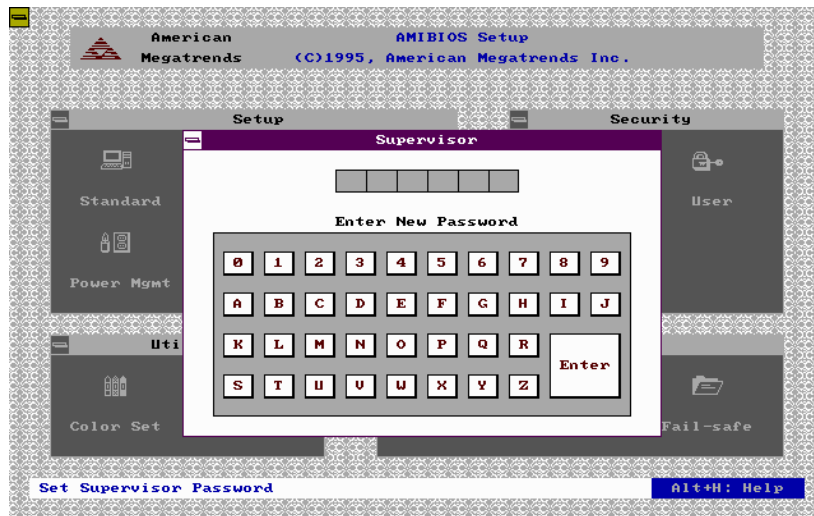
### 4.7.1 WINBIOS PASSWORD SUPPORT

WINBIOS Setup has an optional password feature. The system can be configured so that all users must enter a password every time the system boots or when WINBIOS Setup is executed. You can set either a Supervisor password or a User password.

#### If You Do Not Want to Use a Password

Just press <Enter> when the password prompt appears.

The password check option is enabled in Advanced Setup by choosing either *Always* (the password prompt appears every time the system is powered on) or *Setup* (the password prompt appears only when WINBIOS is run). The password is stored in CMOS RAM. The following screen appears when you select the password icon from the WINBIOS Setup main menu:



**Fig. 21 Password Input Menu**

You can enter a password by:

- typing the password on the keyboard,
- selecting each letter via the mouse, or
- selecting each letter via the pen stylus.

Pen access must be customized for each specific hardware platform/

When you select Supervisor or User, AMIBIOS prompts for a password. You must set the Supervisor password before you can set the User password. Enter a 1 - 6 character password. The password does not appear on the screen when typed. Make sure you write it down. If you forget it, you must drain CMOS RAM and reconfigure the system.

#### **4.7.2 CHANGING A PASSWORD**

Select the Password icon (Supervisor or User) from the Security section of the WinBIOS Setup main menu. Enter the password and press <Enter>. The screen does not display the characters entered. After the new password is entered, retype the new password as prompted and press <Enter>. If the password confirmation is incorrect, an error message appears. If the new password is entered without error, press <Esc> to return to the WinBIOS Setup Main Menu. The password is stored in CMOS RAM after WinBIOS Setup completes. The next time the system boots, user is prompted for password if the password function is present and is enabled.

### 4.7.3 ANTI-VIRUS

When the Anti-Virus icon is selected from the Security section of the WinBIOS Setup main menu, WinBIOS issues a warning when any program (or virus) issues a Disk Format command or attempts to write to the boot sector of the hard disk drive. The following screen appears when user select the Anti-Virus icon:

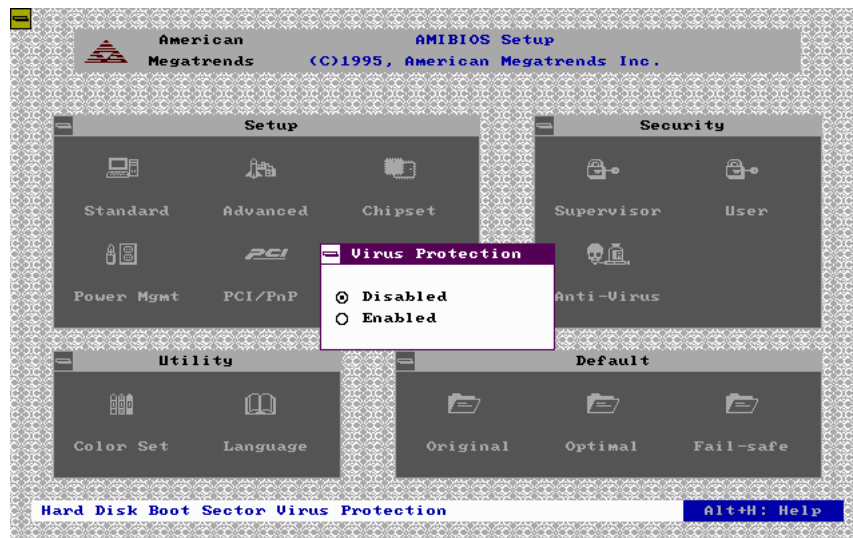


Fig. 22 Anti Virus Menu

The settings are *Enabled* or *Disabled*. If enabled, the following appears when a write is attempted to the boot sector. User may have to type **N** several times to prevent the boot sector write.

```
          Boot Sector Write!!!  
Possible VIRUS: Continue (Y/N)? _
```

The following is displayed after any attempt to format any cylinder, head, or sector of any hard disk drive via the BIOS INT 13 Hard Disk Drive Service:

```
          Format!!!  
Possible VIRUS: Continue (Y/N)? _
```

If the anti-virus feature is *Enabled*, a virus warning message will be displayed when user attempt to format the hard disk drive.

If user select **Continue**, formatting proceeds as normal.

## 4.8 UTILITY

The following icons appear in this section:

- Color set, and
- Language.

### Color Set

Color Set sets the WINBIOS Setup screen colors.

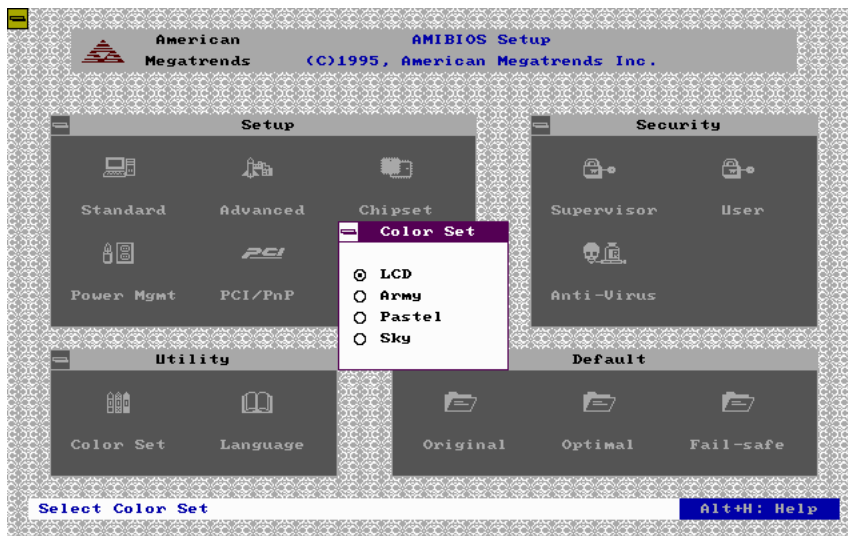


Fig. 23 Color Set Menu

### Language

Language allows you to select English, German, or French language screen prompts and messages. This BIOS is an English version.

## 4.9 DEFAULT

The icons in this section permit user to select a group of settings for all WinBIOS Setup options. Not only can use these icons to quickly set system configuration parameters, user can choose a group of settings that have a better chance of working when the system is having configuration-related problems.

### 4.9.1 ORIGINAL

Choose the Original icon to return to the system configuration values present in WinBIOS Setup when user first began this WinBIOS Setup session.

### **4.9.2 OPTIMAL**

User can load the optimal default settings for the WinBIOS Setup options by selecting the Optimal icon. The Optimal default settings are best-case values that should optimize system performance. If CMOS RAM is corrupted, the Optimal settings are loaded automatically.

### **4.9.3 FAIL-SAFE**

User can load the Fail-Safe WinBIOS Setup option settings by selecting the Fail-Safe icon from the Default section of the WinBIOS setup main menu.

The Fail-Safe settings provide far from optimal system performance, but are the most stable settings. Use this option as a diagnostic aid if the system is behaving erratically.

## CHAPTER 5 WinBIOS POWER-ON SELF TEST

WinBIOS provides all IBM standard Power-On Self Test (POST) routines as well as enhanced WinBIOS POST routines. WinBIOS POST supports CPU internal diagnostics.

Everytime the system is powered on, WinBIOS executes two types of POST routines:

- **System Test and Initialization** (test and initialize WinBIOS for normal operations), and
- **System Configuration Verification** (compare defined configuration with hardware actually installed).

BIOS error are reported in one of two ways:

<b>If...</b>	<b>then...</b>
the error occurs before the display device is initialized,	a series of beeps sound. Beep codes indicate that a fatal error has occurred. WinBIOS Beep Codes are described on the next page.
the error occurs after the display device is initialized,	the error message is displayed. WinBIOS error messages are explained in "WinBIOS Displayed Error Message" section. A prompt to press <F1> can appear with displayed error messages.

Table 14



## 5.1 BEEP CODES

Fatal errors, which halt the boot process, are communicated through a series of audible beeps. If WinBIOS POST can initialize the system video display, it displays the error message. Displayed error messages, in most cases, allow the system to continue to boot.

Beeps	Error message	Description
1	Refresh Failure	The memory refresh circuitry is faulty.
2	Parity Error	Parity error in the base memory (the first 64KB block) of memory.
3	Base 64MB Memory Failure	Memory failure in first 64KB.
4	Timer Not Operational	A memory failure in the first 64KB of memory, or Timer 1 is not functioning.
5	Processor error	The CPU generated an error.
6	8042 - Gate A20 Failure	Cannot switch to protected mode.
7	Processor Exception Interrupt Error	The CPU on the CPU Card generated an exception interrupt.
8	Display Memory Read/Write Error	The system video adapter is either missing or its memory is faulty. This is not a fatal error.
9	ROM checksum Error	The ROM checksum value does not match the value encoded in WinBIOS.
10	CMOS Shutdown Register Read/Write Error	The shutdown register for CMOS RAM has failed.
11	Cache Memory bad - do not enable cache	The cache memory test failed. Cache memory is disabled. <i>Do not press &lt;Ctrl&gt; &lt;Alt&gt; &lt;Shift&gt; &lt;+&gt; to enable cache memory.</i>

**Table 15: WinBIOS Beep Codes**

## 5.2 TROUBLESHOOTING SYSTEM PROBLEMS

The following table shows what is needed to do when the computer has a WinBIOS and it starts beeping:

<b>If the system beeps...</b>	<b>then...</b>
1, 2, or 3 times...	reseat the memory SIMMs or DIPs. If the system still beeps, replace the memory.
6 times...	reseat the keyboard controller chip. If it still beeps, replace the keyboard controller. If it still beeps, try a different keyboard, or replace the keyboard fuse, if the keyboard has one.
8 times...	there is a memory error on the video adapter. Replace the video adapter, or the RAM on the video adapter.
9 times...	the BIOS ROM chip is bad. The system probably needs a new BIOS ROM chip.
11 times...	reseat the cache memory on the motherboard. If it still beeps, replace the cache memory.
4, 5, 7, or 10 times...	the motherboard must be replaced.

**Table 16**

### 5.3 WinBIOS DISPLAYED ERROR MESSAGES

If an error occurs after the system display has been initialized, the error message are displayed as follows:

```
ERROR Message Line 1
ERROR Message Line 2
Press <F1> to continue
```

and the system halts. The system does not halt if "Wait For <F1> If Any Error" in Advanced Setup is "Disabled".

```
RUN SETUP UTILITY.
```

may also appear. Press <F1> to run WinBIOS Setup if this message appears.

Error Message	Explanation
8042 Gate-A20 Error	Gate A20 on the keyboard controller (8042) is not working. Replace the 8042.
Address Line Short!	Error in the address decoding circuitry.
C: Drive Error	No response from drive C:. Run the AMIDdiag Hard Disk Utility. Check the C: hard disk type in Standard Setup.
C: Drive Failure	No response from hard disk drive C:. Replace the drive.
Cache Memory Bad, Do Not Enable Cache!	Cache memory is defective. Run AMIDdiag.
CH-2 Timer Error	An AT system has two timers. There is an error in timer2.
To be continue ...	

**Table 17A**

<b>Error Message</b>	<b>Explanation</b>
CMOS Battery State Low	CMOS RAM is powered by a battery. The battery power is low. Replace the battery.
CMOS Checksum Failure	CMOS RAM checksum is different than the previous value. Run WinBIOS Setup.
CMOS System Options Not Set	The values stored in CMOS RAM are either corrupt or nonexistent. Run WinBIOS Setup.
CMOS Display Type Mismatch	The video type in CMOS RAM does not match the type detected. Run WinBIOS Setup.
CMOS Memory Size Mismatch	The amount of memory found by WinBIOS is different than the amount in CMOS RAM. Run WinBIOS Setup.
CMOS Time & Date Not Set	Run Standard setup to set the date and time.
D: Drive Error	No response from Drive D:. Run the AMIDiag Hard Disk Utility. Check the hard disk type in Standard Setup.
D: Drive Failure	No response from hard disk drive D:. Replace the drive.
Diskette Boot Failure	The boot diskette in drive A: cannot be used to boot the system. Use another boot diskette and follow the screen instructions.
Display Switch Not Proper	Some systems require a video switch be set to either color or monochrome. Turn the system off, set the switch properly, then power on.
To be continue...	

**Table 17B**

<b>Error Message</b>	<b>Explanation</b>
DMA Error	Error in the DMA controller.
DMA 1 Error	Error in the first DMA channel.
DMA 2 Error	Error in the second DMA channel.
FDD Controller Failure	WinBIOS cannot communicate with the floppy disk drive controller. Check all appropriate connections after the system is powered down.
HDD Controller Failure	WinBIOS cannot communicate with the hard disk drive controller. Check all appropriate connections after the system is powered down.
INTR1 Error	Interrupt channel 1 failed POST.
INTR2 Error	Interrupt channel 2 failed POST.
Invalid Boot Diskette	WinBIOS can read the diskette in floppy drive A:, but it cannot boot the system with it. Use another boot diskette and follow the screen instructions.
Keyboard Is Locked... Unlock It	The keyboard lock on the system is engaged. The system must be unlocked to continue to boot.
Keyboard Error	The keyboard has a timing problem. Make sure a Keyboard Controller WinBIOS is installed. Set "Keyboard" in "Advanced Setup" to "Not Installed" to skip the keyboard POST routines.
KB/Interface Error	There is an error in the keyboard connector.
No ROM BASIC	Cannot find a proper bootable sector on either drive A: or C:. WinBIOS cannot find ROM Basic.
To be continue ...	

Table 17C

<b>Error Message</b>	<b>Explanation</b>
Off Board Parity Error	Parity error in memory installed on an adapter card in an expansion slot. Format is : OFF BOARD PARITY ERROR ADDR = (XXXX) XXXX is the hex address where the error occurred. Run AMIDdiag to find and correct memory problems.
On Board Parity Error	Parity error in motherboard memory. Format is : ON BOARD PARITY ERROR ADDR = (XXXX) XXXX is the hex address where the error occurred. Run AMIDdiag to find and correct memory problems.
Parity Error ????	Parity error in system memory at an unknown address. Run AMIDdiag to find and correct memory problems.

**Table 17D**

## 5.4 ISA NMI HANDLER MESSAGES

ISA NMI Message	Explanation
Memory Parity Error at xxxxx	Memory failed. If the memory location can be determined, it is displayed as xxxxx. If not, the message is Memory Parity Error ????.
I/O Card Parity Error at xxxxx	An expansion card failed. If the address can be determined, it is displayed as xxxxx. If not, the message is I/O Card Parity Error ????.
DMA Bus Time-Out	A device has driven the bus signal for more than 7.8 microseconds.

**Table 18**