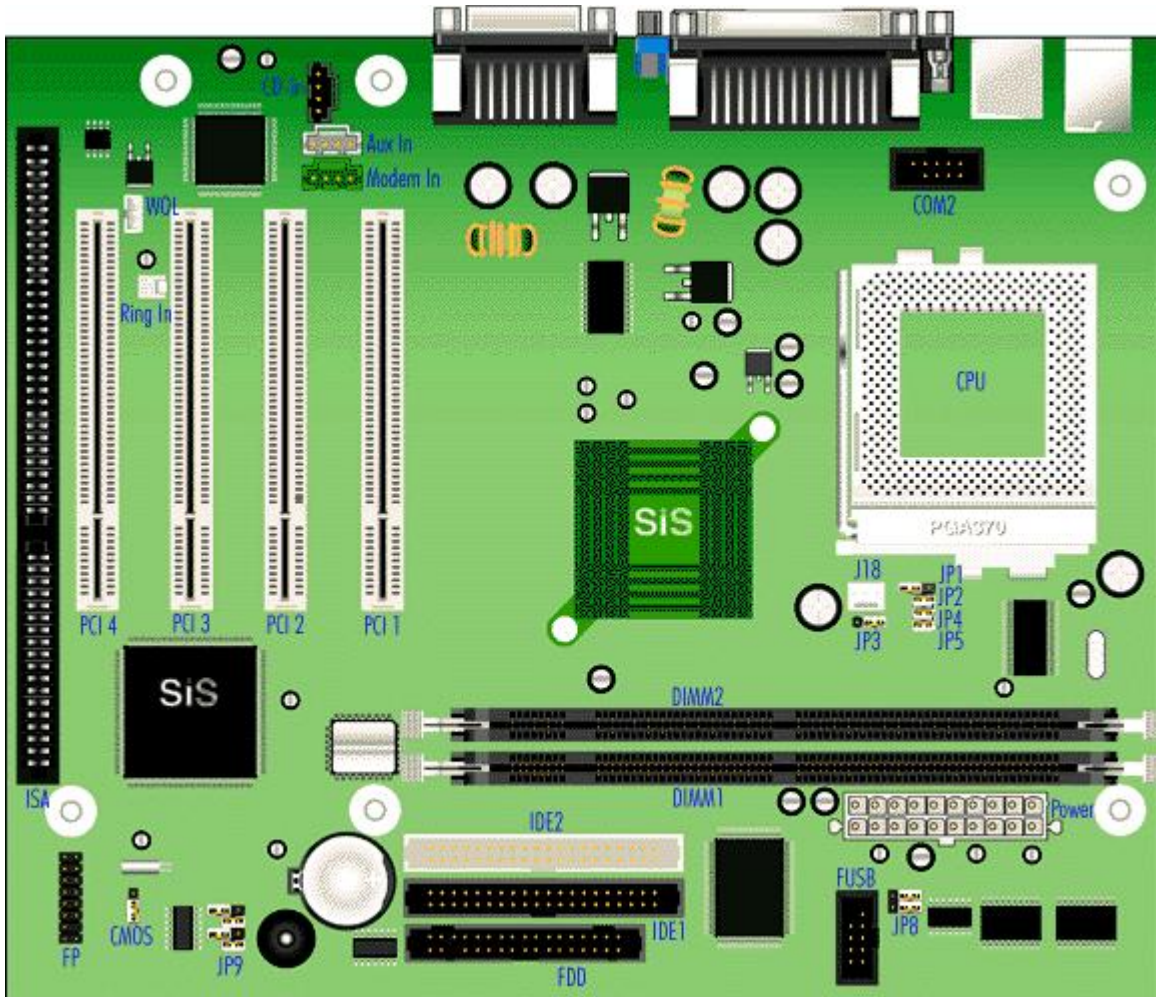


Packard Bell Skye M/Board



Specification

- **Audio** : ESS Solo 1.
- **BIOS** : AWARD BIOS.
- **Cache** : Integrated in CPU.
- **Chipset** : SiS620/SiS5595 AGP/PCI/ISA Chipset.
- **CPU Support** : Socket 370 processors: Intel Celeron PPGA 366, 400, 433 and 466 MHz.
- **Expansion Slots** : 3 PCI slots and 1 shared ISA/PCI slot.
- **Form Factor** : MicroATX
- **RAM** : 2 DIMM sockets supporting single- or double-sided SDRAM up to a maximum of 256 MB.
- **Video** : Integrated in chipset.

Upgrade Options

- **Processors** : CPU upgradeable up to 466 MHz.
- **RAM** : RAM upgradeable up to 256 MB using 66 or 100 MHz SDRAM DIMMs. This motherboard only accepts 168-pin DIMM modules. Only gold-plated DIMMs may be used, as the sockets on the motherboard are also gold-plated, and oxidation must be prevented. Use 60 ns, 3.3 V CAS Latency 2, single- or double-sided DIMMs only. Parity is not supported.

Jumpers

Jumper	Function	Configuration
CMOS	CMOS/Password Clear	2-3 - Normal Operation 1-2 - Clear CMOS and password (if power cord is unplugged)

Onboard VGA (JP3)

Jumper	Pins	Function
JP3	2-3	Enable onboard video
	1-2	Disable onboard video

USB ports (JP8)

Jumper	Pins	Function
JP8	1-2,4-5	Front USB on, Back top USB off
	2-3,5-6	Back top USB on, Front USB off

Front Bus Speed and Memory Speed.

Bus Speed	Memory Speed	JP1	JP2	JP3	JP4
66	66	ON	ON	ON	OFF
66	100	OFF	ON	ON	ON
100	66	OFF	OFF	ON	ON
100	100	OFF	ON	OFF	ON

CPU/Bus Speed Ratio Select - JP9

Intel CPU/Bus	1-2	3-4	5-6	7-8
X3.5	ON	ON	OFF	OFF
X4.0	ON	OFF	ON	ON
X4.5	ON	OFF	OFF	ON
X5.0	ON	OFF	ON	OFF
X5.5	ON	OFF	OFF	OFF
X6.0	OFF	ON	ON	ON
X6.5	OFF	ON	OFF	ON