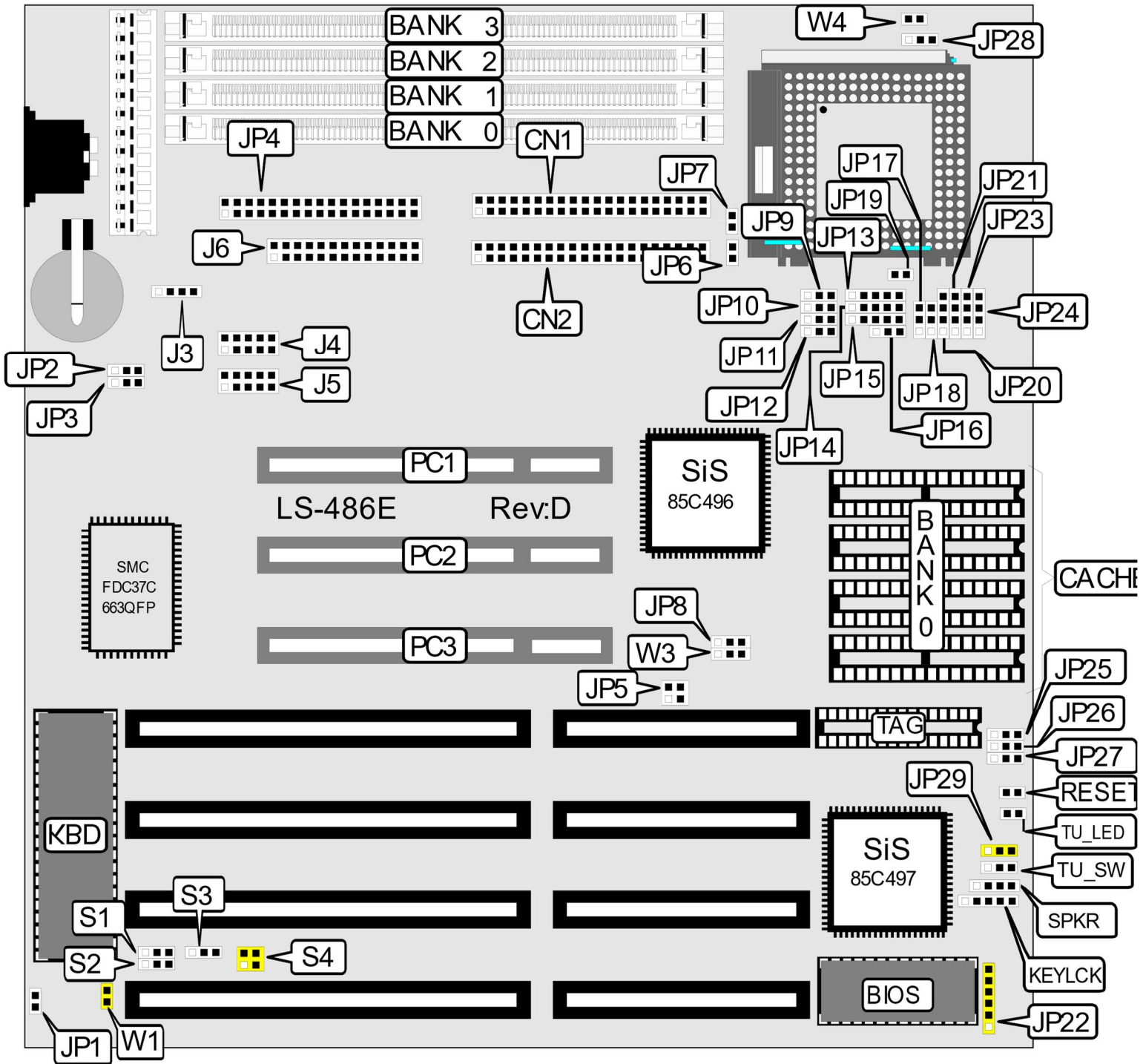


Lucky Star LS-486E rev: D jumper settings



Note: jumpers marked with yellow might be hard wired on some boards

• Connectors list:

J3 – external battery

CN2 – Primary IDE

J5 – COM1

CN1 – Secondary IDE

J4 – COM2

JP4 – Floppy

JP6 – Primary IDE LED

CN7 – Parallel

JP7 – Secondary IDE LED

Special jumpers:

JP17: -> 1-2 for AMD DX4-100

-> 2-3 for 3.3V AMD DX2

-> OFF for any other CPU

JP8 and W3's functions are unknown and their default position is 1-2

- CPU settings

CPU voltage:	W4	JP28
3.45 volts (5x86/DX4)	Open	1-2
4.0 volts (Cyrix DX2)	Open	2-3
5.0 volts (Intel DX/DX2)	Closed	Open

FSB speed:	JP5
25MHz	All Open
33MHz	1-2, 3-4
40MHz	1-2
50MHz	3-4

Clock chip used: IMI SC464AYB

CPU type:	Intel SLE DX/DX2/DX4	AMD/UMC DX/DX2/DX4	Intel 486SX	Cyrix DX2	P24D	P24T
JP10	Open	Open	Open	Open	1-2	Open
JP11	Open	Open	Open	2-3	1-2	1-2
JP12	2-3	2-3	2-3	2-3	1-2	1-2
JP13	4-5	Open	Open	2-3	4-5	1-2
JP14	1-2	Open	Open	Open	2-3	Open
JP15	2-3	Open	Open	1-2	2-3	2-3
JP16	Open	Open	Open	Open	Open	1-2
JP18	1-2	Open	Open	1-2	1-2	1-2
JP19	Open	Open	Open	Closed	Open	Open
JP20	3-4	3-4	3-4	3-4	3-4	2-3
JP21	Open	Open	Open	2-3	Open	1-2
JP23	3-4	Open	Open	2-3	1-2, 3-4	3-4
JP24	1-2, 3-4	1-2, 3-4	2-3	1-2, 3-4	1-2, 3-4	1-2, 3-4

- Cache settings:

Cache bank size:	JP25	JP27
128KB (four 32K x 8 chips)	1-2	2-3
256KB (four 64K x 8 chips)	2-3	2-3
512KB (four 128K x 8 chips)	2-3	1-2

Cache TAG chip size:	JP26
8K x 8/32K x 8	1-2
16K x 8	2-3

- Other settings

CMOS operation:	JP2, JP3
Normal	1-2
Clear	2-3

Monitor type:	JP1
Mono	Closed
Color	Open

LPT resources:	S1	S2	S3
IRQ 5	1-2	-	-
IRQ 3	2-3	-	-
DRQ 1	-	1-2	-
DRQ 3	-	2-3	-
DACK 1	-	-	1-2
DACK 3	-	-	2-3

- Memory configs

Total memory:	SIMM 1	SIMM 2	SIMM 3	SIMM 4
4 MB	4 MB	--	--	--
8 MB	4 MB	4 MB	--	--
8 MB	8 MB	--	--	--
12 MB	4 MB	4 MB	4 MB	--
12 MB	4 MB	8 MB	--	--
16 MB	4 MB	4 MB	4 MB	4 MB
16 MB	8 MB	8 MB	--	--
16 MB	16 MB	16 MB	--	--
20 MB	4 MB	16 MB	--	--
24 MB	8 MB	8 MB	--	--
32 MB	8 MB	8 MB	8 MB	8 MB
32 MB	16 MB	16 MB	--	--
64 MB	16 MB	16 MB	16 MB	16 MB
128 MB	32 MB	32 MB	32 MB	32 MB