



---

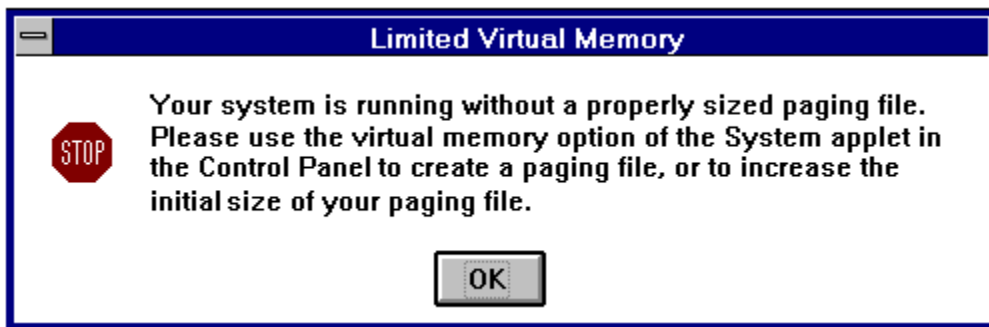
October 2, 1995

Dear Alpha XL Customer:

Thank you for purchasing a Digital Alpha XL personal workstation.

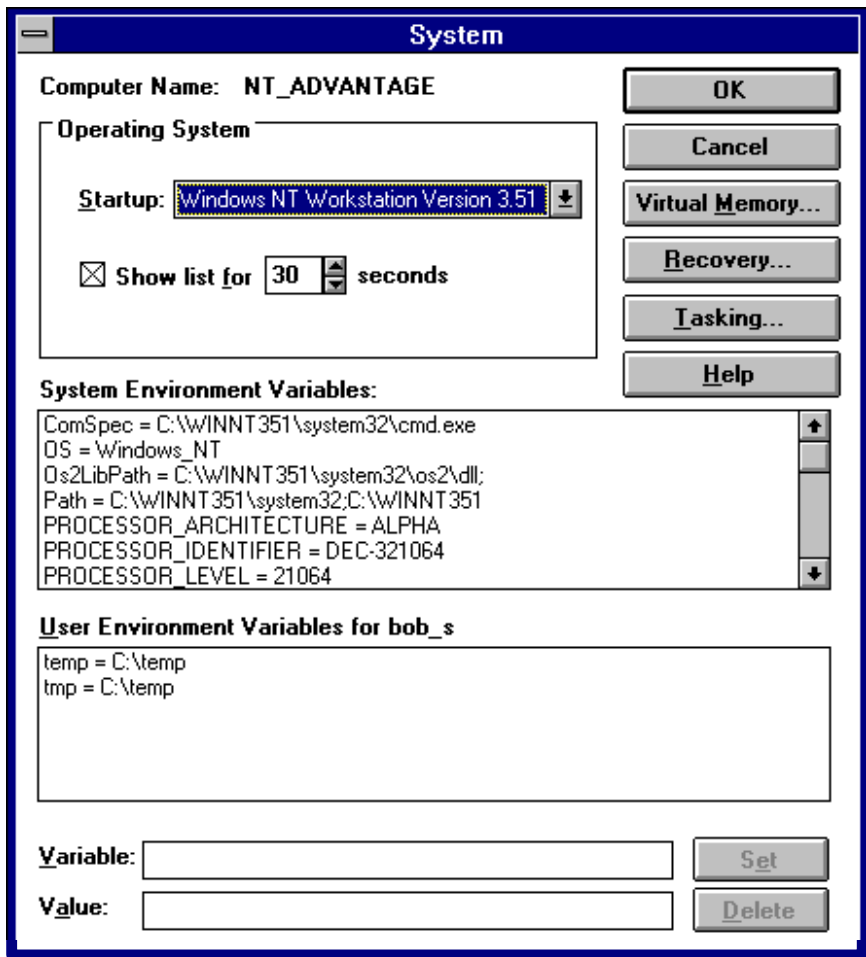
This letter applies only to Alpha XL workstations purchased with 16 MB of memory.

The Microsoft Windows NT™ operating system is factory installed on the Alpha XL system. The Windows NT system calculates the wrong minimum paging file size for a 16 MB Alpha XL workstation. The first time you log on to the system, a Limited Virtual Memory message box appears:

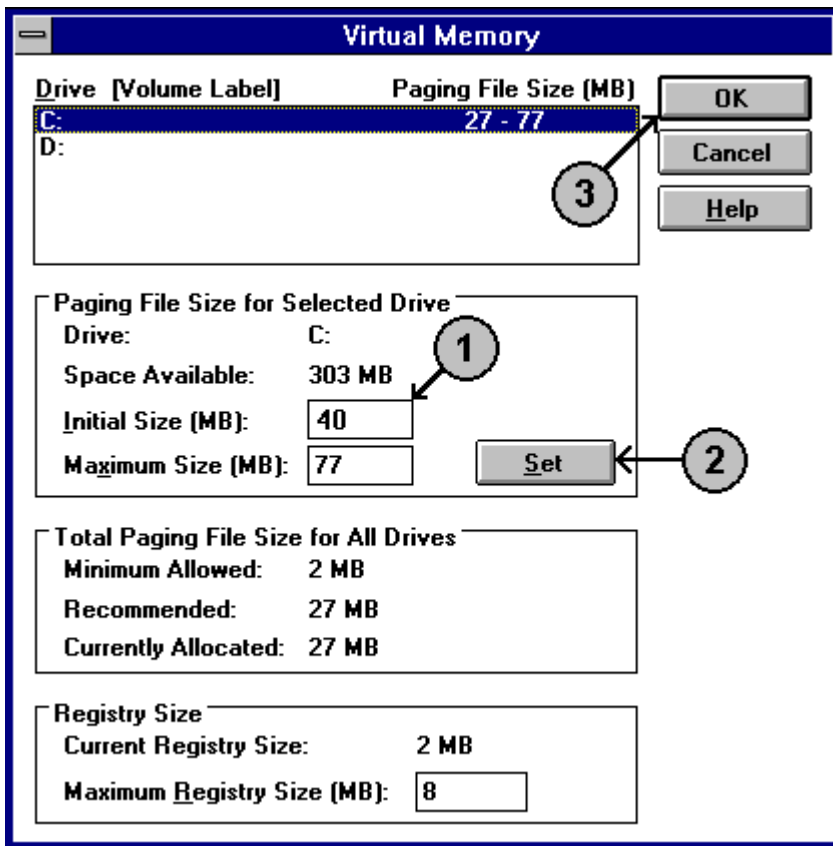


Either click on the OK button or press the Enter key.

Windows NT continues the log on process. Due to the virtual memory condition, Windows NT launches the System applet from the Control Panel group. If the System menu box is covered by the Digital Getting Started screen, click on the Getting Started screen Quit button.



Click on the Virtual Memory... button. The Virtual Memory menu box is displayed.

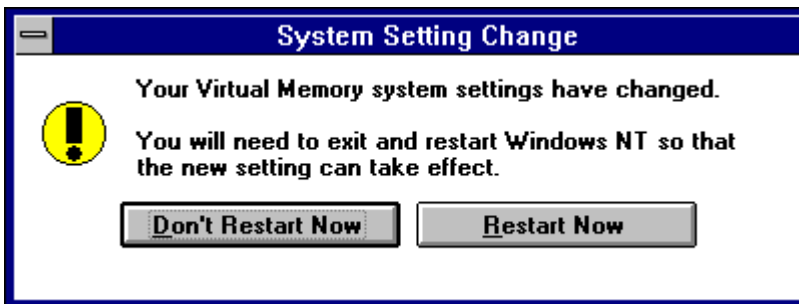


An initial size of at least 40 MB will allow Windows NT to operate without generating the Limited Virtual Memory message.

To change the initial value:

1. Change the value in the Initial Size (MB): box ❶ from 27 to 40.
2. Click the Set button. ❷
3. Click the OK button. ❸
4. Click the System menu box OK button.

The System Setting Change message box is displayed.



Click on Restart Now for the new settings to take effect.

Once Windows NT restarts, your Alpha XL personal workstation is ready to assume its role as the best desktop system you've ever owned.

Very truly yours,

Digital Equipment Corporation