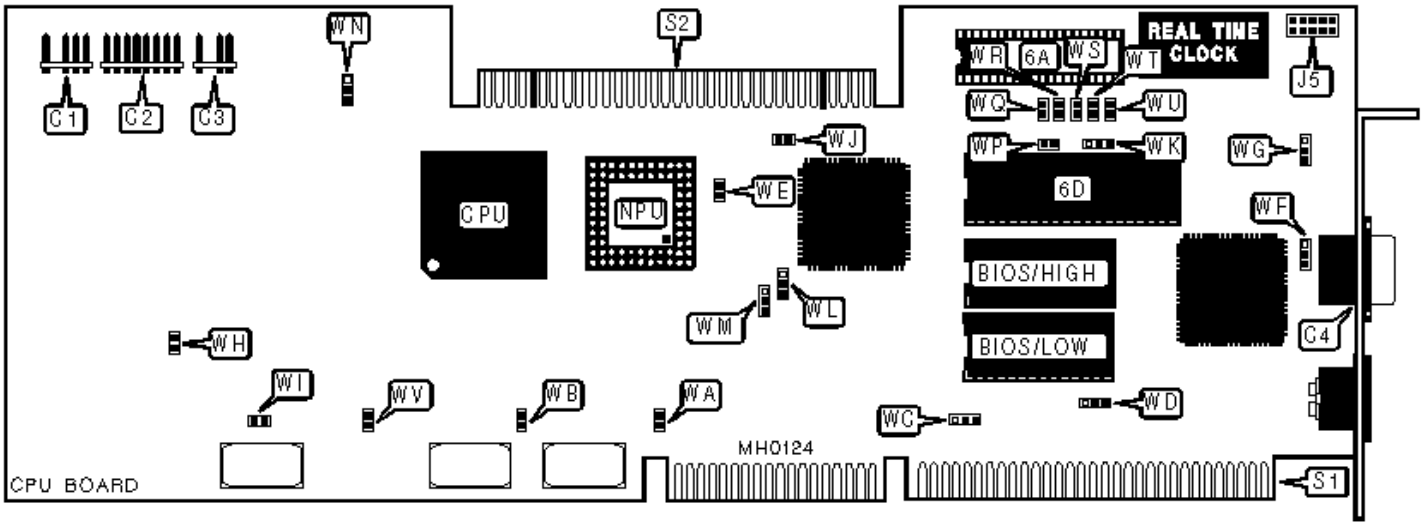
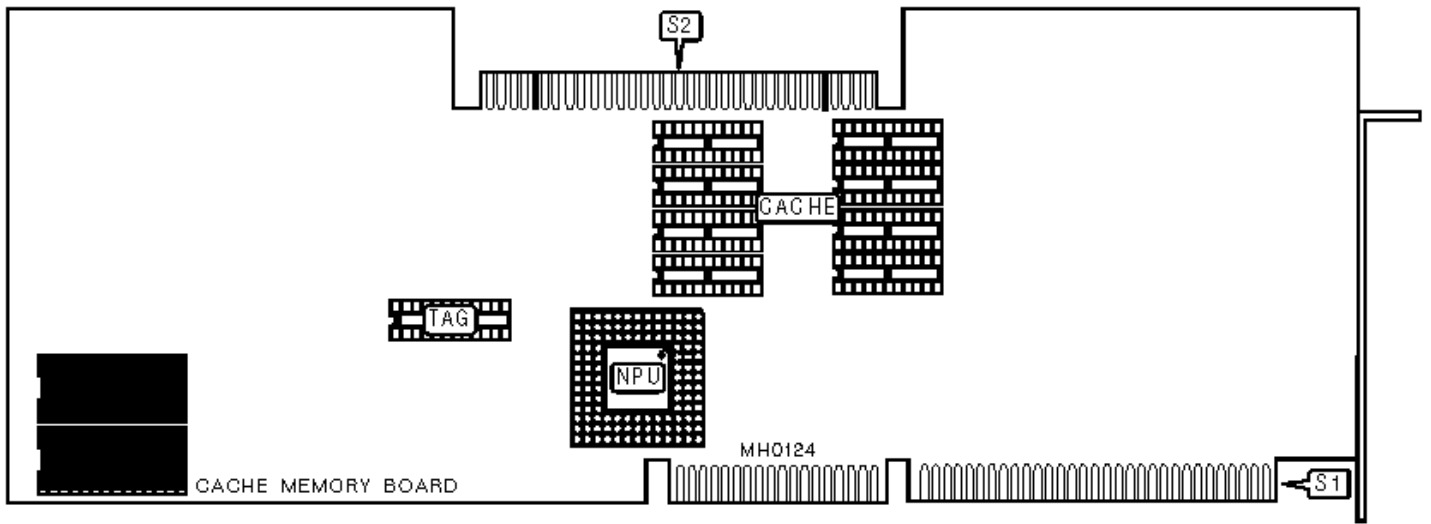


WYSE TECHNOLOGY, INC.

WYSESYSTEM 386 MODEL 3225

Configuration





## CONNECTIONS

Purpose	Location	Purpose	Location
External battery	C1	Serial port two	J5
Front panel connector	C2	Card edge connector	S1
Power good/Speaker	C3	Top plane local bus connector	S2
Serial port one	C4		

## USER CONFIGURABLE SETTINGS

Function	Jumper	Position
» Factory configured - do not alter	WA	Closed
» Factory configured - do not alter	WB	Closed
» Parity check enabled	WE	Closed
» Parity check disabled	WE	Open
» Factory test disabled	WF	pins 1 & 2 closed
» Factory test enabled	WF	pins 2 & 3 closed
» Monitor type select color	WG	pins 2 & 3 closed
» Monitor type select monochrome	WG	pins 1 & 2 closed
» Factory configured - do not alter	WH	Closed
» Factory configured - do not alter	WI	Open

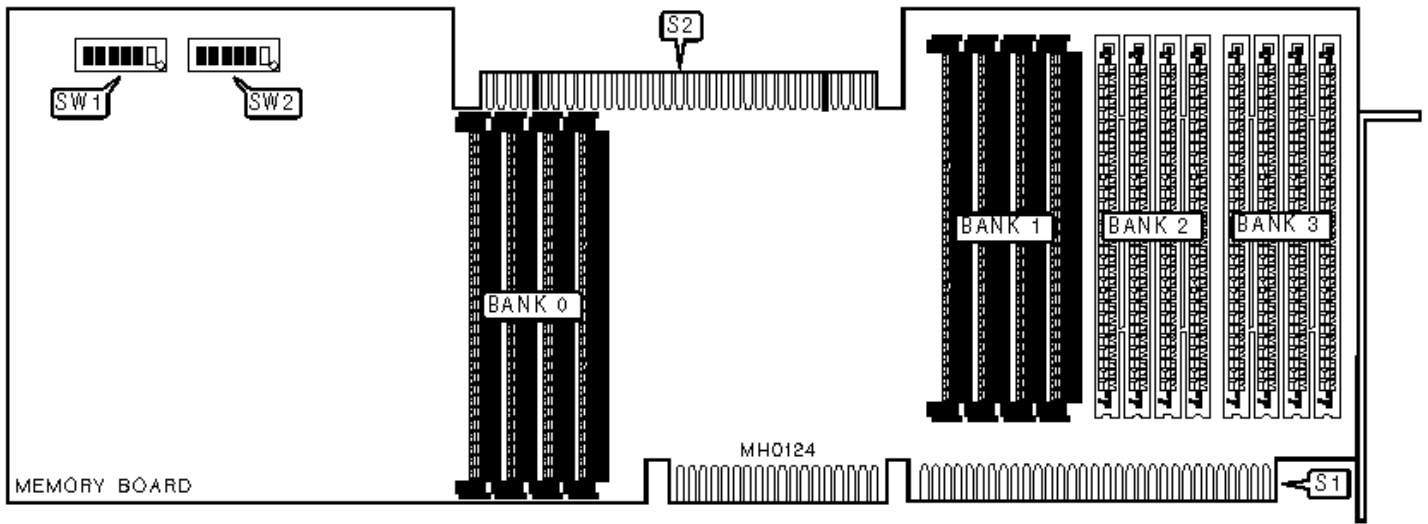
»	NPU disabled	WJ	Closed
	NPU enabled	WJ	Open
»	Factory configured - do not alter	WK	pins 1 & 2 closed
»	Hidden refresh enabled	WL	pins 1 & 2 closed
	Hidden refresh disabled	WL	pins 1 & 2 closed
»	Factory configured - do not alter	WM	pins 1 & 2 closed
»	Factory configured - do not alter	WN	pins 1 & 2 closed
»	Factory configured - do not alter	WV	Closed

### KEYBOARD SCANNER CONFIGURATION

Setting	WP	WQ	WR	WS	WT	WU
1 chip installed at 6D	Closed	Closed	Closed	Closed	Closed	Closed
2 chips installed at 6A and 6D	Open	Open	Open	Open	Open	Open

### BIOS CONFIGURATION

Jumper	WC	WD
27128	pins 2 & 3 closed	pins 2 & 3 closed
27256	pins 1 & 2 closed	pins 2 & 3 closed
27512	pins 1 & 2 closed	pins 1 & 2 closed



### DRAM CONFIGURATION

Size	Bank 0	Bank 1	Bank 2	Bank 3
4MB	(4) 1M x 9	NONE	NONE	NONE
8MB	(4) 1M x 9	(4) 1M x 9	NONE	NONE
12MB	(4) 1M x 9	(4) 1M x 9	(4) 1M x 9	NONE
16MB	(4) 1M x 9	(4) 1M x 9	(4) 1M x 9	(4) 1M x 9

### DRAM SWITCH CONFIGURATION

Size	SW1/3	SW1/4	SW1/5	SW1/6	SW2/1
4MB	On	Off	Off	Off	Off
8MB	Off	On	Off	Off	On
12MB	On	On	Off	Off	On
16MB	Off	Off	On	Off	On

### DRAM SWITCH CONFIGURATION (CON'T)

Size	SW2/2	SW2/3	SW2/4	SW2/5	SW2/6
4MB	Off	Off	Off	Off	Off
8MB	Off	Off	Off	Off	Off
12MB	Off	On	Off	Off	Off

16MB	Off	On	Off	On	Off
------	-----	----	-----	----	-----

<b>DRAM SPLIT CONFIGURATION</b>			
<b>Memory Split</b>		<b>SW1/1</b>	<b>SW1/2</b>
»	640KB/384KB	On	On
	512KB/512KB	Off	On
	256KB/786KB	On	Off