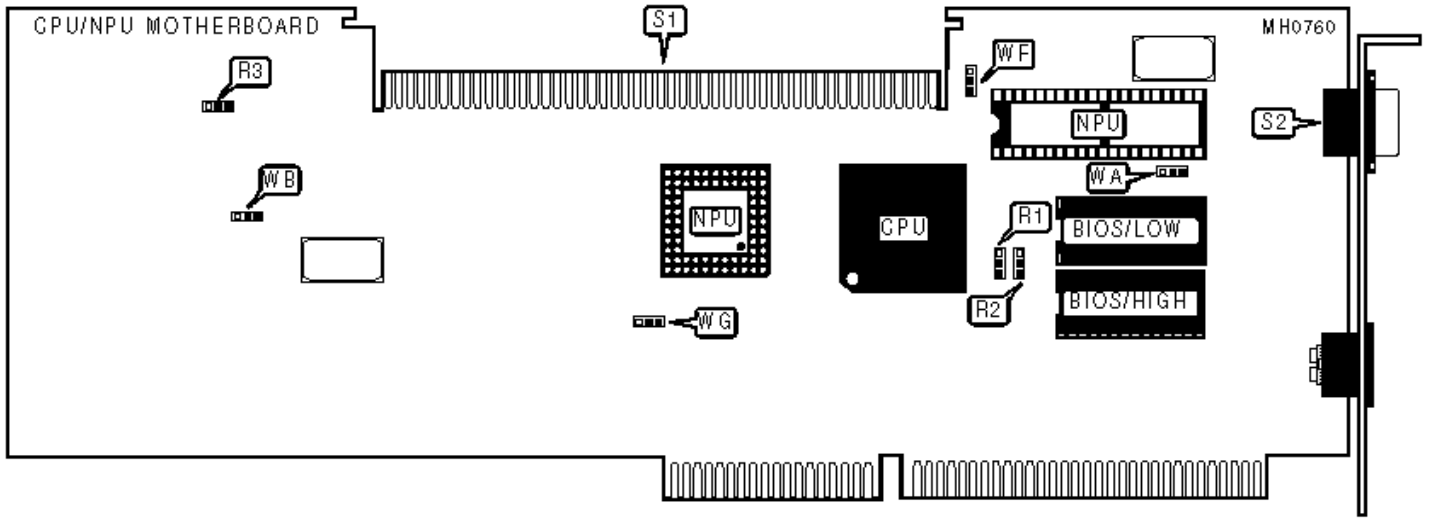
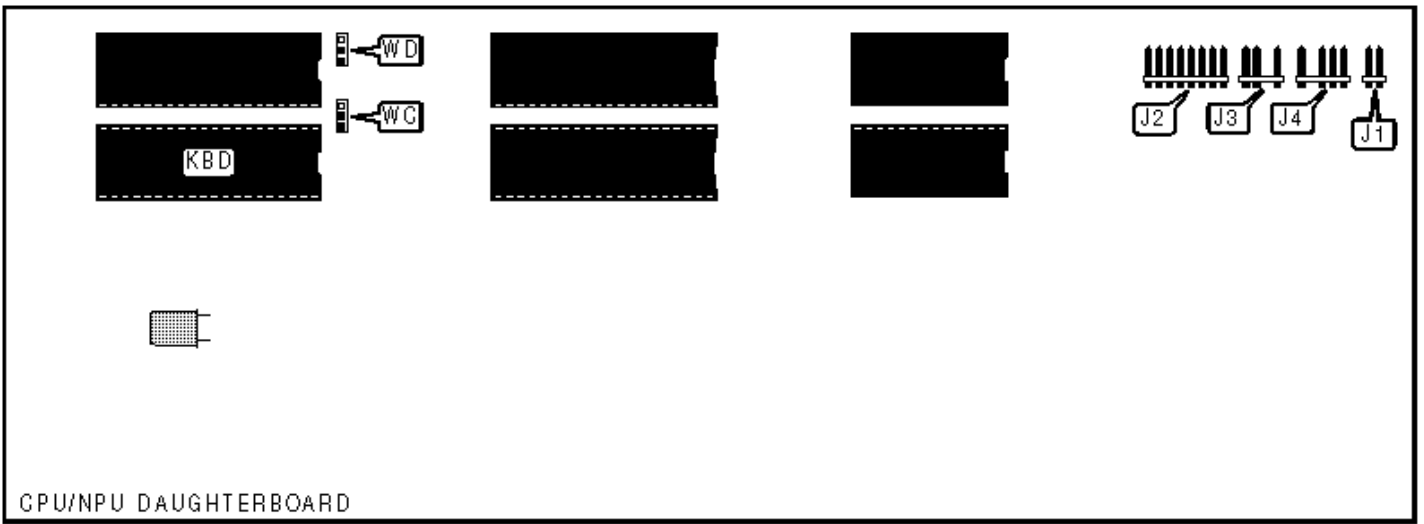


WYSE TECHNOLOGY, INC.

WYSE PC 386 MODEL 3216

Configuration





### CONNECTIONS

Purpose	Location	Purpose	Location
Reset	J1	Power good/Speaker	J4
Keylock	J2	Local bus card edge connector	S1
External battery	J3		

### USER CONFIGURABLE SETTINGS ON THE CPU/NPU BOARDS

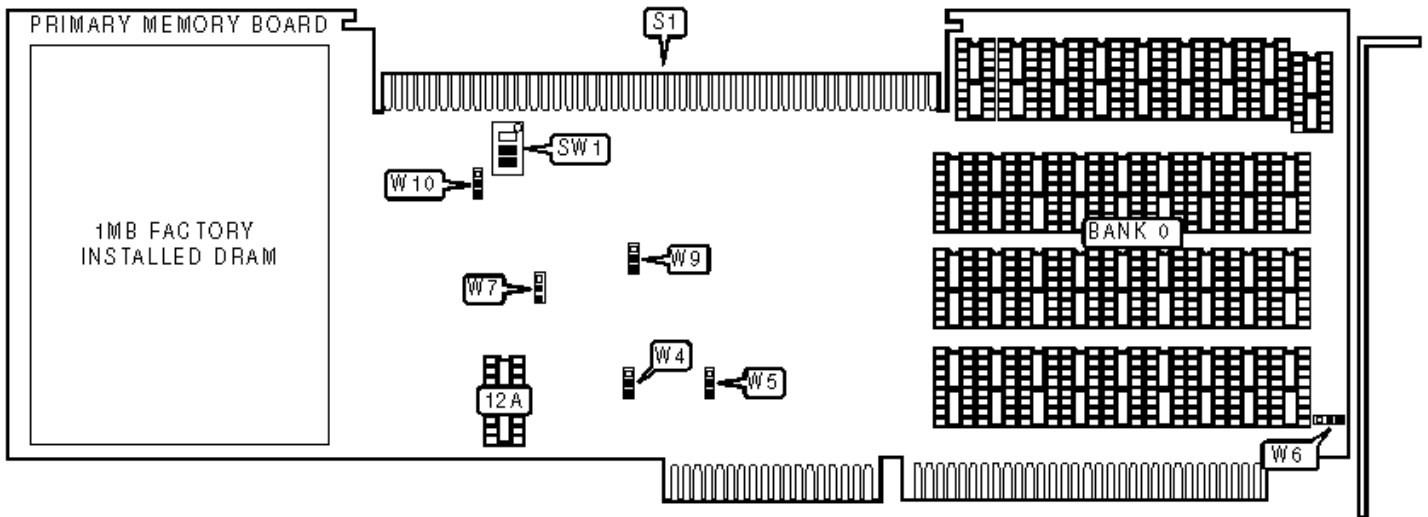
Function	Jumper	Position
» Factory configured - do not alter	R3	pins 2 & 3 closed
» NPU disabled	WB	pins 2 & 3 closed
NPU enabled	WB	pins 1 & 2 closed
» Factory test disabled	WC	pins 1 & 2 closed
Factory test enabled	WC	pins 2 & 3 closed
» Monitor type select color	WD	pins 1 & 2 closed
Monitor type select monochrome	WD	pins 2 & 3 closed
» Factory configured - do not alter	WF	pins 1 & 2 closed

### BIOS CONFIGURATION

Size	R1	R2

27128	pins 2 & 3 closed	pins 1 & 2 closed
27256	pins 1 & 2 closed	pins 1 & 2 closed
27512	pins 1 & 2 closed	pins 2 & 3 closed

NPU CONFIGURATION		
Type	WA	WG
80287	pins 1 & 2 closed	pins 2 & 3 closed
80387	pins 2 & 3 closed	pins 1 & 2 closed



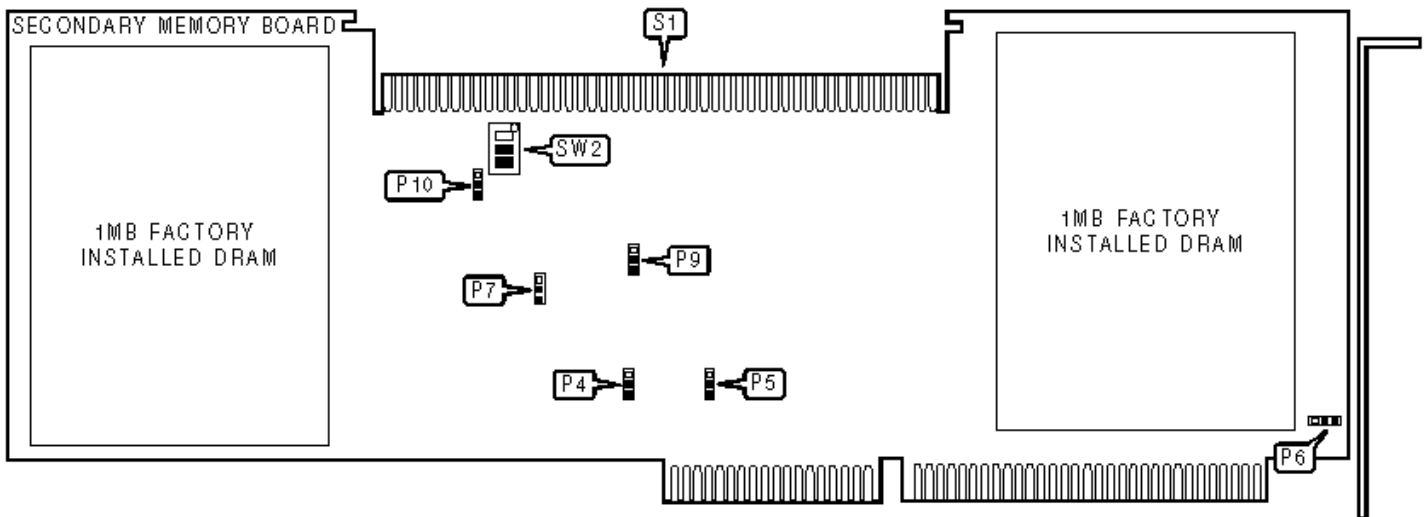
PRIMARY MEMORY BOARD DRAM JUMPER CONFIGURATION						
Size	W4	W5	W6	W7	W9	W10
1MB	1 & 2	1 & 2	2 & 3	1 & 2	1 & 2	1 & 2
2MB 1	2 & 3	2 & 3	2 & 3	2 & 3	2 & 3	2 & 3

Note: Pins designated should be in the closed position. Note 1 :To achieve 2MB on the Primary Memory Board, populate Bank 0 with (36) 41256 DRAM chips.

PRIMARY MEMORY BOARD DRAM SWITCH CONFIGURATION	
Configuration with a PAL 250451-01 chip installed at location 12A	
Size	
1MB	

2MB
4MB 1
6MB 2
Configuration with a PAL 250358-01 chip installed at location 12A
1MB
2MB
4MB 1
6MB 2

be configured on the Primary Memory Board. Note 1 :Memory configuration of 4MB is possible with the installation of one additional memory board. Note 2 :Memory configuration of 6MB is possible with the installation of two



### USER CONFIGURABLE SETTINGS ON THE ADDITIONAL MEMORY BOARDS

Function	Switch	Position
» Factory configured - do not alter	P4	pins 2 & 3 closed
» Factory configured - do not alter	P5	pins 2 & 3 closed
» Factory configured - do not alter	P6	pins 2 & 3 closed
» Factory configured - do not alter	P7	pins 2 & 3 closed
» Factory configured - do not alter	P9	pins 2 & 3 closed
» Factory configured - do not alter	P10	pins 2 & 3 closed

## MEMORY BOARD SWITCH CONFIGURATION

Size	SW2/1	sw2/2	sw2/3
Board configured as the second memory board (the Primary Memory Board must be installed first)	On	Off	Off
Third memory board (the Primary Memory Board, and one other Additional Memory Board must be installed first)	On	Off	Off