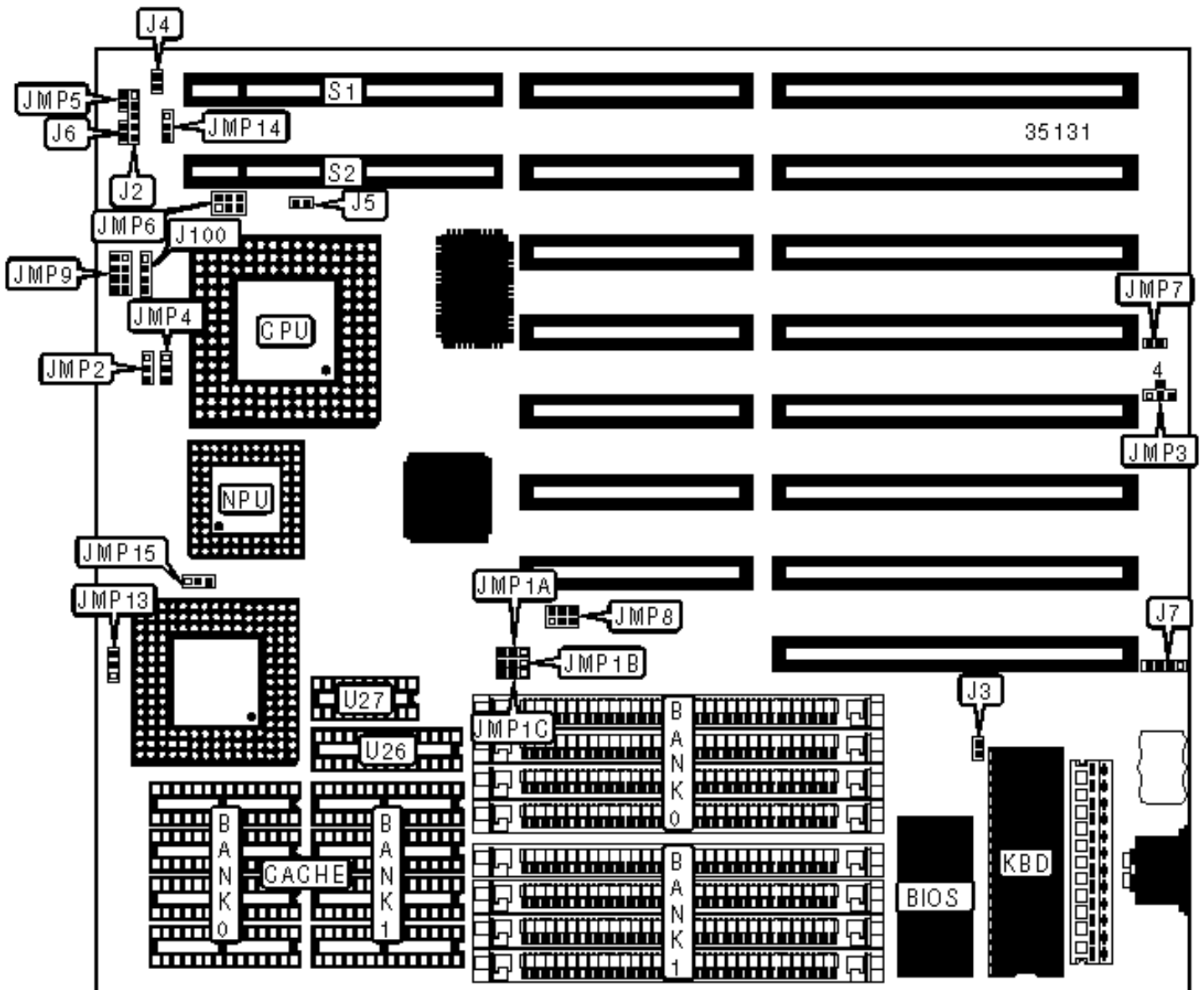


UNIDENTIFIED

786 ACIO VESA (VER. 2)

Configuration



## CONNECTIONS

Purpose	Location	Purpose	Location
Power LED & keylock	J2	External battery	J7
Turbo switch	J4	Speaker	J100
Turbo LED	J5	32-bit VESA Local bus slot	S1
Reset switch	J6	32-bit VESA Local bus slot	S2

## USER CONFIGURABLE SETTINGS

Function	Jumper	Position
» Monitor type select color	J3	Closed
Monitor type select monochrome	J3	Open
» CMOS memory normal operation (Internal battery)	JMP3	Pins 2 & 3 closed
» CMOS memory normal operation (External battery)	JMP3	Pins 1 & 2 closed
CMOS memory clear	JMP3	Pins 2 & 4 closed
» NPU enabled	JMP4	Pins 2 & 3 closed
NPU disabled	JMP4	Pins 1 & 2 closed
» Factory configured - do not alter	JMP7	Closed
» Factory configured - do not alter	JMP13	Pins 1 & 2 closed

## VESA BUS SELECTION

Function	JMP6	JMP14	JMP15
466-50MHz VESA local bus enabled	Open	1 & 2	1 & 2
All other VESA local busses enabled	Closed	2 & 3	2 & 3

Note: Pins designated should be in the closed position.

## DRAM CONFIGURATION

Size	Bank 0	Bank 1
1MB	(4) 256K x 9	None
2MB	(4) 256K x 9	(4) 256K x 9
4MB	(4) 1M x 9	None
5MB	(4) 1M x 9	(4) 256K x 9
8MB	(4) 1M x 9	(4) 1M x 9
16MB	(4) 4M x 9	None
32MB	(4) 4M x 9	(4) 4M x 9

### CACHE CONFIGURATION

Size	Bank 0	Bank 1	TAG/U26	TAG/U27
64KB	(4) 8K x 8	(4) 8K x 8	(1) 8K x 8	(1) 8K x 8
128KB	(4) 32K x 8	NONE	(1) 8K x 8	(1) 8K x 8
256KB	(4) 32K x 8	(4) 32K x 8	(1) 32K x 8	(1) 32K x 8

### CACHE JUMPER CONFIGURATION

Size	JMP1A	JMP1B	JMP1C	JMP8
64KB	1 & 2	1 & 2	1 & 2	1 & 2, 4 & 5
128KB	2 & 3	1 & 2	2 & 3	2 & 3, 4 & 5
256KB	2 & 3	2 & 3	2 & 3	2 & 3, 5 & 6

Note:Pins designated should be in the closed position.

### CPU TYPE CONFIGURATION

Type	JMP2	JMP5
80386DX	2 & 3	Closed
CX486DLC	Open	Open

80486SX	1 & 2	Open
80486DX	2 & 3	Open
80486DX2	2 & 3	Open

Note:Pins designated should be in the closed position.

<b>CPU SPEED CONFIGURATION</b>	
Speed	JMP9
80386DX/25MHz	Pins 1 & 5 and 2 & 6 closed
80386DX/33MHz	Pins 1 & 5 and 4 & 8 closed
80386DX/40MHz	Pins 1 & 5, 3 & 7 and 4 & 8 closed
CX486DLC-33	Pins 1 & 5 and 4 & 8 closed
CX486DLC-40	Pins 1 & 5, 3 & 7 and 4 & 8 closed
80486SX-33	Pins 4 & 8 closed
80486DX/50MHz	Pins 3 & 7 closed
80486DX/25MHz	Pins 2 & 6 closed
80486DX/33MHz	Pins 4 & 8 closed
80486DX2/50i MHz	Pins 2 & 6 closed
80486DX2/66i MHz	Pins 4 & 8 closed