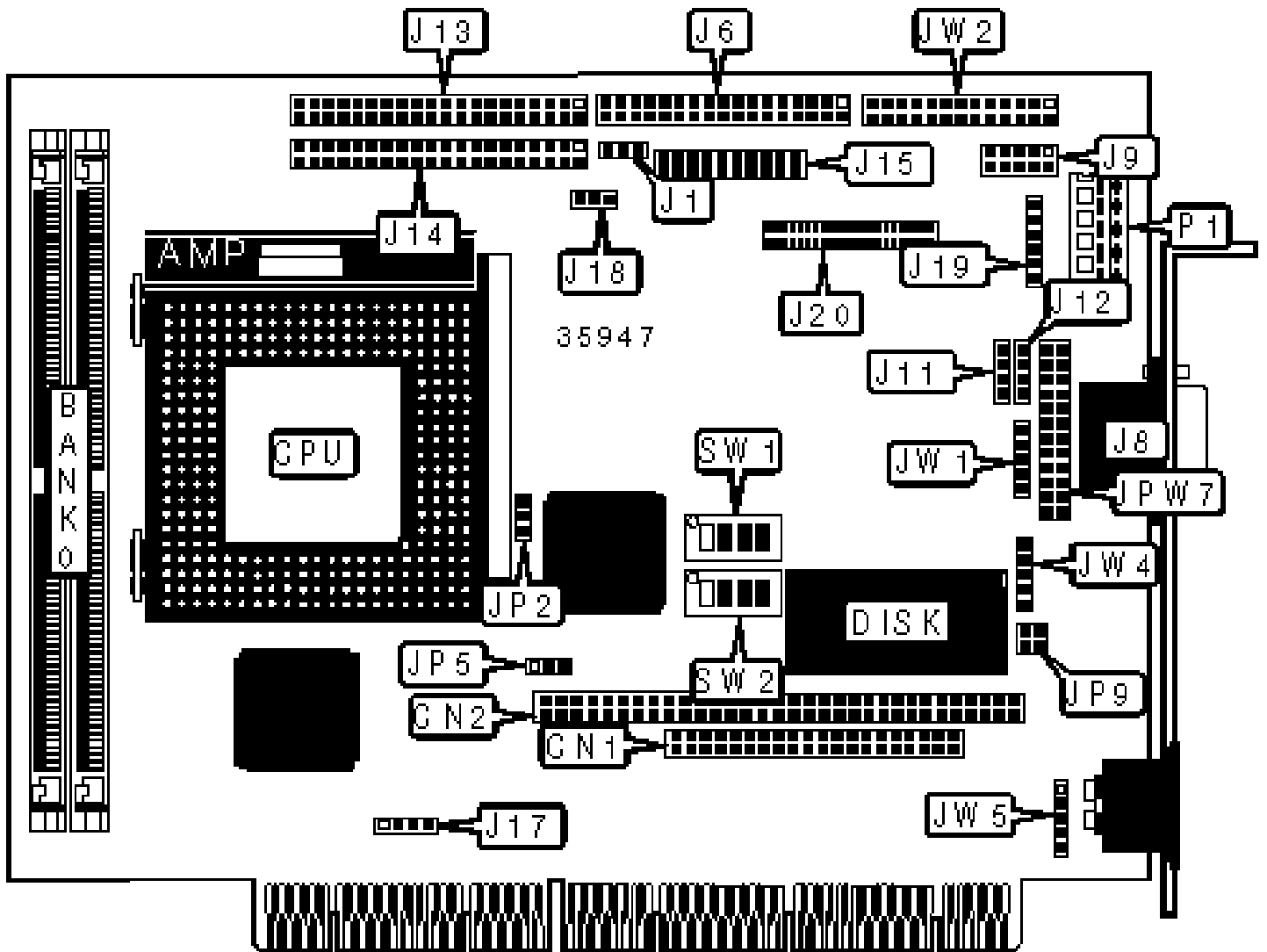


TMC RESEARCH CORPORATION

CI5TTPX (VER. 1.0)

Configuration



## CONNECTIONS

Purpose	Location	Purpose	Location
PC/104 connector	CN1	Reset switch	J15/pins 9 & 19
PC/104 connector	CN2	IDE interface LED	J15/pins 10 & 20
Chassis fan power	J1	Power LED & keylock	J15/pins 11 - 15
Floppy drive interface	J6	External battery	J17
Serial port 1	J8	CPU fan power	J18
Serial port 2	J9	External ATX connector	J19
USB connector 1	J11	LCD panel connector	J20
USB connector 2	J12	IR connector	JW1
IDE interface 1	J13	Parallel port	JW2
IDE interface 2	J14	PS/2 mouse interface	JW4
Speaker	J15/pins 1 - 4	Auxiliary keyboard connector	JW5
Green PC connector	J15/pins 6 & 16	Power connector	P1
Turbo LED	J15/pins 8 & 18		

## USER CONFIGURABLE SETTINGS

Function	Label	Position
Battery type select internal	J17	Pins 1 & 2 closed
Battery type select external	J17	Closed
» CMOS memory normal operation	JP5	Pins 1 & 2 closed
CMOS memory clear	JP5	Pins 2 & 3 closed
DISK address select D8000	JP9	Pins 3 & 4 closed
DISK address select D0000	JP9	Pins 1 & 2 closed

## SIMM CONFIGURATION

Size	Bank 0
8MB	(2) 1M x 36
16MB	(2) 2M x 36
32MB	(2) 4M x 36
64MB	(2) 8M x 36
128MB	(2) 16M x 36
Note: Board accepts EDO memory.	

<b>CACHE CONFIGURATION</b>
Note: The location of the cache is unidentified.

<b>CPU SPEED SELECTION (CX 6X86)</b>						
CPU speed	Clock speed	Multiplier	SW1/1	SW1/2	SW1/3	SW1/4
120MHz	50MHz	2x	On	On	On	Off
150MHz	60MHz	2x	Off	On	On	Off
166MHz	66MHz	2x	On	Off	On	Off

<b>CPU SPEED SELECTION (CX 6X86L)</b>						
CPU speed	Clock speed	Multiplier	SW1/1	SW1/2	SW1/3	SW1/4
120MHz	50MHz	2x	On	On	On	Off
150MHz	60MHz	2x	Off	On	On	Off
166MHz	66MHz	2x	On	Off	On	Off

<b>CPU SPEED SELECTION (CX 6X86MX)</b>						
CPU speed	Clock speed	Multiplier	SW1/1	SW1/2	SW1/3	SW1/4
166MHz	60MHz	2.5x	Off	On	On	On

200MHz	66MHz	2.5x	On	Off	On	On
233MHz	66MHz	3x	On	Off	Off	On
266MHz	66MHz	3.5x	On	Off	Off	Off

### CPU SPEED SELECTION (AM K5)

CPU speed	Clock speed	Multiplier	SW1/1	SW1/2	SW1/3	SW1/4
75MHz	50MHz	1.5x	On	On	Off	Off
90MHz	60MHz	1.5x	Off	On	Off	Off
100MHz	66MHz	1.5x	On	Off	Off	Off
133MHz	66MHz	2x	On	Off	On	Off
166MHz	66MHz	2.5x	On	Off	On	On

### CPU SPEED SELECTION (AM K6)

CPU speed	Clock speed	Multiplier	SW1/1	SW1/2	SW1/3	SW1/4
200MHz	66MHz	3x	On	Off	Off	On
233MHz	66MHz	3.5x	On	Off	Off	Off

### CPU SPEED SELECTION (INTEL)

CPU speed	Clock speed	Multiplier	SW1/1	SW1/2	SW1/3	SW1/4
75MHz	50MHz	1.5x	On	On	Off	Off
90MHz	60MHz	1.5x	Off	On	Off	Off
100MHz	66MHz	1.5x	On	Off	Off	Off
120MHz	60MHz	2x	Off	On	On	Off
133MHz	66MHz	2x	On	Off	On	Off
150MHz	60MHz	2.5x	Off	On	On	On
166MHz	66MHz	2.5x	On	Off	On	On

200MHz	66MHz	3x	On	Off	Off	On
--------	-------	----	----	-----	-----	----

### CPU SPEED SELECTION (INTEL MMX)

CPU speed	Clock speed	Multiplier	SW1/1	SW1/2	SW1/3	SW1/4
166MHz	66MHz	2.5x	On	Off	On	On
200MHz	66MHz	3x	On	Off	Off	On
233MHz	66MHz	3.5x	On	Off	Off	Off

### CPU VOLTAGE SELECTION (SINGLE)

Voltage	JP2	SW2/1	SW2/2	SW2/3	SW2/4
3.5v	1 & 2	On	On	On	On

Note: Pins designated should be in the closed position.

### CPU VOLTAGE SELECTION (DUAL)

Voltage	V core	JP2	SW2/1	SW2/2	SW2/3	SW2/4
3.3v	2.0v	2 & 3	Off	Off	Off	Off
3.3v	2.1v	2 & 3	On	Off	Off	Off
3.3v	2.2v	2 & 3	Off	On	Off	Off
3.3v	2.3v	2 & 3	On	On	Off	Off
3.3v	2.4v	2 & 3	Off	Off	On	Off
3.3v	2.5v	2 & 3	On	Off	On	Off
3.3v	2.6v	2 & 3	Off	On	On	Off
3.3v	2.7v	2 & 3	On	On	On	Off
3.3v	2.8v	2 & 3	Off	Off	Off	On
3.3v	2.9v	2 & 3	On	Off	Off	On
3.3v	3.0v	2 & 3	Off	On	Off	On

3.3v	3.2v	2 & 3	Off	Off	On	On
3.3v	3.5v	2 & 3	On	On	On	On

Note: Pins designated should be in the closed position.

### SERIAL PORT 2 SELECTION

Setting	JPW7
RS-232	Open
RS-422	Pins 1 & 2, 3 & 4, 5 & 6, 7 & 8, 11 & 12, 15 & 16, 17 & 18, 19 & 20, 23 & 24 closed
RS-485	Pins 1 & 2, 3 & 4, 5 & 6, 7 & 8, 9 & 10, 11 & 12, 13 & 14, 15 & 16, 17 & 18, 19 & 20, 21 & 22, 23 & 24 closed