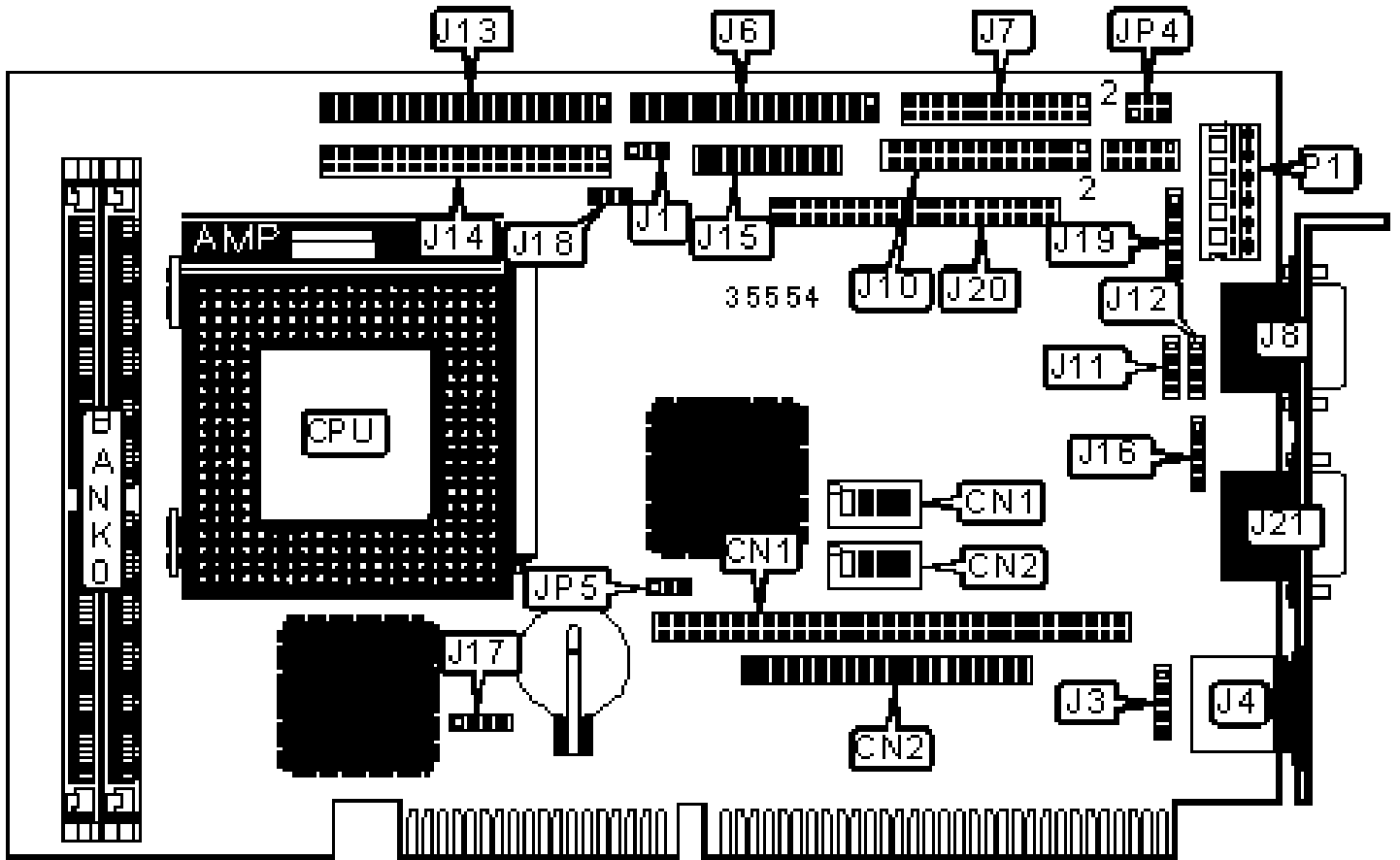


TMC RESEARCH CORPORATION

CI5TTL (VER. 1.1), CI5TTL(D) (VER. 1.1)

Configuration



CONNECTIONS

Purpose	Location	Purpose	Location
PC/104 connector	CN1	Speaker	J15/pins 1 – 4
PC/104 connector	CN2	Dual power connector	J15/pins 6 & 16
Chassis fan power	J1	Turbo LED	J15/pins 8 & 18
Auxiliary keyboard connector	J3	Reset switch	J15/pins 9 & 19
PS/2 mouse port	J4	IDE interface LED	J15/pins 10 & 20
Floppy drive interface	J6	Power LED & keylock	J15/pins 11 - 15
Parallel port	J7	IR connector	J16
Serial port 1	J8	External battery	J17
Serial port 2	J9	CPU fan power	J18
USB connector	J11	External ATX connector	J19
USB connector	J12	LCD panel connector	J20
IDE interface 1	J13	VGA port	J21
IDE interface 2	J14	3.3v power	P1

USER CONFIGURABLE SETTINGS

Function	Label	Position
Battery type select internal	J17	Pins 1 & 2 closed
Battery type select external	J17	Closed
Keyboard enabled	JP4	Pins 3 & 5, 4 & 6 closed
PS/2 mouse enabled	JP4	Pins 1 & 3, 2 & 4 closed
» CMOS memory normal operation	JP5	Pins 1 & 2 closed
CMOS memory clear	JP5	Pins 2 & 3 closed

SIMM CONFIGURATION

Size	Bank 1
8MB	(2) 1M x 36
16MB	(2) 2M x 36
32MB	(2) 4M x 36
64MB	(2) 8M x 36
128MB	(2) 16M x 36
Note: Board accepts EDO memory.	

CACHE CONFIGURATION

Note: 512KB cache is factory installed and is not configurable. The location is unidentified.

VIDEO MEMORY CONFIGURATION

Note: Video memory is factory installed and is not configurable. The size & location is unidentified.

CPU SPEED SELECTION (CX 6X86)

CPU speed	Clock speed	Multiplier	SW1/1	SW1/2	SW1/3	SW1/4
120MHz	50MHz	2x	On	On	On	Off
150MHz	60MHz	2x	Off	On	On	Off
166MHz	66MHz	2x	On	Off	On	Off

CPU SPEED SELECTION (CX 6X86L)

CPU speed	Clock speed	Multiplier	SW1/1	SW1/2	SW1/3	SW1/4
120MHz	50MHz	2x	On	On	On	Off
150MHz	60MHz	2x	Off	On	On	Off
166MHz	66MHz	2x	On	Off	On	Off

CPU SPEED SELECTION (CX 6X86MX)

CPU speed	Clock speed	Multiplier	SW1/1	SW1/2	SW1/3	SW1/4
166MHz	60MHz	2.5x	Off	On	On	On
200MHz	66MHz	2.5x	On	Off	On	On
233MHz	66MHz	3x	On	Off	Off	On
266MHz	66MHz	3.5x	On	Off	Off	Off

CPU SPEED SELECTION (AM K5)

CPU speed	Clock speed	Multiplier	SW1/1	SW1/2	SW1/3	SW1/4
75MHz	50MHz	1.5x	On	On	Off	Off
90MHz	60MHz	1.5x	Off	On	Off	Off
100MHz	66MHz	1.5x	On	Off	Off	Off
133MHz	66MHz	2x	Off	On	On	Off
166MHz	66MHz	2.5x	On	Off	On	On

CPU SPEED SELECTION (AM K6)

CPU speed	Clock speed	Multiplier	SW1/1	SW1/2	SW1/3	SW1/4
200MHz	66MHz	3x	On	Off	Off	On
233MHz	66MHz	3.5x	On	Off	Off	Off

CPU SPEED SELECTION (INTEL)

CPU speed	Clock speed	Multiplier	SW1/1	SW1/2	SW1/3	SW1/4
75MHz	50MHz	1.5x	On	On	Off	Off
90MHz	60MHz	1.5x	Off	On	Off	Off
100MHz	66MHz	1.5x	On	Off	Off	Off
120MHz	60MHz	2x	Off	On	On	Off

133MHz	66MHz	2x	On	Off	On	Off
150MHz	60MHz	2.5x	Off	On	On	On
166MHz	66MHz	2.5x	On	Off	On	On
200MHz	66MHz	3x	On	Off	Off	On

CPU SPEED SELECTION (INTEL MMX)

CPU speed	Clock speed	Multiplier	SW1/1	SW1/2	SW1/3	SW1/4
166MHz	66MHz	2.5x	On	Off	On	On
200MHz	66MHz	3x	On	Off	Off	On
233MHz	66MHz	3.5x	On	Off	Off	Off

CPU VOLTAGE SELECTION (SINGLE)

Voltage	SW2/1	SW2/2	SW2/3	SW2/4
On	On	On	On	On

CPU VOLTAGE SELECTION (DUAL)

Voltage	V core	SW2/1	SW2/2	SW2/3	SW2/4
3.3v	2.0v	Off	Off	Off	Off
3.3v	2.1v	On	Off	Off	Off
3.3v	2.2v	Off	On	Off	Off
3.3v	2.3v	On	On	Off	Off
3.3v	2.4v	Off	Off	On	Off
3.3v	2.5v	On	Off	On	Off
3.3v	2.6v	Off	On	On	Off
3.3v	2.7v	On	On	On	Off
3.3v	2.8v	Off	Off	Off	On

3.3v	2.9v	On	Off	Off	On
3.3v	3.0v	Off	On	Off	On
3.3v	3.2v	Off	Off	On	On
3.3v	3.5v	On	On	On	On

SERIAL PORT 2 SELECTION	
Setting	JP2
RS-232	Pins 1 & 3, 2 & 4, 7 & 8, 9 & 10, 11 & 12, 13 & 14, 15 & 16, 17 & 18 closed
RS-422	Pins 3 & 5, 4 & 6, 19 & 20, 27 & 28 closed
RS-485	Pins 3 & 5, 4 & 6, 19 & 20, 21 & 22, 23 & 24, 25 & 26 closed