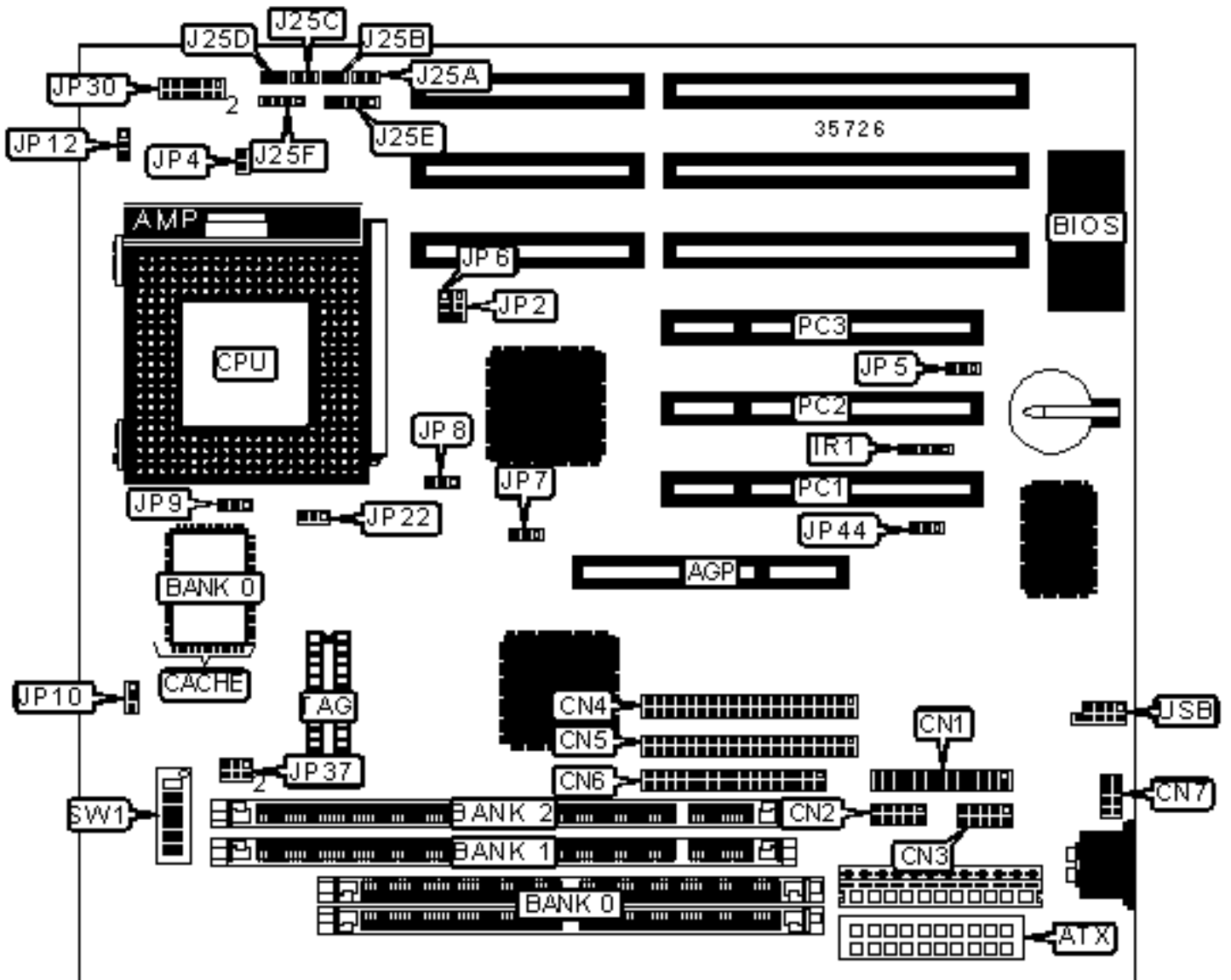


SOYO COMPUTER CO., LTD.

SY-5EH5

Configuration



CONNECTIONS

Purpose	Location	Purpose	Location
AGP slot	AGP	Reset switch	J25A
ATX power connector	ATX	Soft off power supply	J25B
Parallel port	CN1	Turbo LED	J25C
Serial port 1	CN2	IDE interface LED	J25D
Serial port 2	CN3	Power LED & keylock	J25E
IDE interface 1	CN4	Speaker	J25F
IDE interface 2	CN5	CPU fan power	JP12
Floppy drive interface	CN6	Wake on LAN connector	JP44
PS/2 mouse interface	CN7	32-bit PCI slots	PC1 – PC3
IR connector	IR1	USB connector	USB

USER CONFIGURABLE SETTINGS

Function	Label	Position
CPU voltage select auto	JP4	Closed
CPU voltage select manual	JP4	Open
» CMOS memory normal operation	JP5	Pins 1 & 2 closed
CMOS memory clear	JP5	Pins 2 & 3 closed
CPU burst mode select interleave	JP22	Pins 1 & 2 closed
CPU burst mode select linear	JP22	Pins 2 & 3 closed

SIMM CONFIGURATION

Size	Bank 0
8MB	(2) 1M x 36
16MB	(2) 2M x 36

32MB	(2) 4M x 36
64MB	(2) 8M x 36
Note: Board accepts EDO memory.	

DIMM CONFIGURATION		
Size	Bank 1	Bank 2
8MB	(1) 1M x 64	None
16MB	(1) 2M x 64	None
16MB	(1) 1M x 64	(1) 1M x 64
24MB	(1) 2M x 64	(1) 1M x 64
32MB	(1) 4M x 64	None

DIMM CONFIGURATION (CON'T)		
Size	Bank 1	Bank 2
32MB	(1) 2M x 64	(1) 2M x 64
40MB	(1) 4M x 64	(1) 1M x 64
48MB	(1) 4M x 64	(1) 2M x 64
64MB	(1) 8M x 64	None
64MB	(1) 4M x 64	(1) 4M x 64
72MB	(1) 8M x 64	(1) 1M x 64
80MB	(1) 8M x 64	(1) 2M x 64
96MB	(1) 8M x 64	(1) 4M x 64
128MB	(1) 16M x 64	None
128MB	(1) 8M x 64	(1) 8M x 64
136MB	(1) 16M x 64	(1) 1M x 64
144MB	(1) 16M x 64	(1) 2M x 64

160MB	(1) 16M x 64	(1) 4M x 64
192MB	(1) 16M x 64	(1) 8M x 64
256MB	(1) 16M x 64	(1) 16M x 64
Note: Board accepts EDO & SDRAM memory.		

DIMM VOLTAGE CONFIGURATION		
Voltage		JP37
»	3.3v	Pins 1 & 3, 2 & 4 closed
	5v	Pins 3 & 5, 4 & 6 closed

DIMM FREQUENCY CONFIGURATION			
Frequency		JP9	JP10
»	SDRAM = CPU	Pins 2 & 3 closed	Pins 1 & 2 closed
	SDRAM = AGP	Pins 1 & 2 closed	Pins 2 & 3 closed

CACHE CONFIGURATION		
Size	Bank 0	TAG
512KB	(1) 64K x 64	(1) 16K x 8

CPU SPEED SELECTION (CX 6X86)								
CPU speed	Clock speed	Multiplier	SW1/1	SW1/2	SW1/3	SW1/4	SW1/5	SW1/6
150MHz	60MHz	2x	On	Off	Off	On	Off	Off
166MHz	66MHz	2x	On	Off	Off	Off	Off	Off
200MHz	75MHz	2x	On	Off	Off	Off	On	Off

CPU SPEED SELECTION (CX 6X86L)

CPU speed	Clock speed	Multiplier	SW1/1	SW1/2	SW1/3	SW1/4	SW1/5	SW1/6
150MHz	60MHz	2x	On	Off	Off	On	Off	Off
166MHz	66MHz	2x	On	Off	Off	Off	Off	Off
200MHz	75MHz	2x	On	Off	Off	Off	On	Off

CPU SPEED SELECTION (CX 6X86MX)

CPU speed	Clock speed	Multiplier	SW1/1	SW1/2	SW1/3	SW1/4	SW1/5	SW1/6
166MHz	60MHz	2.5x	On	On	Off	On	Off	Off
200MHz	66MHz	2.5x	On	On	Off	On	Off	Off
200MHz	75MHz	2x	On	Off	Off	Off	On	Off
233MHz	75MHz	2.5x	On	On	Off	Off	On	Off
233MHz	66MHz	3x	Off	On	Off	On	Off	Off
266MHz	83MHz	2.5x	On	On	Off	On	On	Off

CPU SPEED SELECTION (AM K5)

CPU speed	Clock speed	Multiplier	SW1/1	SW1/2	SW1/3	SW1/4	SW1/5	SW1/6
90MHz	60MHz	1.5x	Off	Off	Off	On	Off	Off
100MHz	66MHz	1.5x	Off	Off	Off	Off	Off	Off
120MHz	60MHz	1.5x	Off	Off	Off	On	Off	Off
133MHz	66MHz	2x	On	Off	Off	Off	Off	Off
166MHz	66MHz	2.5x	On	On	Off	Off	Off	Off

CPU SPEED SELECTION (AM K6)

CPU speed	Clock speed	Multiplier	SW1/1	SW1/2	SW1/3	SW1/4	SW1/5	SW1/6
166MHz	66MHz	2.5x	On	On	Off	Off	Off	Off
180MHz	66MHz	3x	Off	On	Off	On	Off	Off

200MHz	66MHz	3x	Off	On	Off	Off	Off	Off
233MHz	66MHz	3.5x	Off	Off	Off	Off	Off	Off

CPU SPEED SELECTION (AM K6 2)

CPU speed	Clock speed	Multiplier	SW1/1	SW1/2	SW1/3	SW1/4	SW1/5	SW1/6
250MHz	100MHz	2.5x	On	On	Off	Off	Off	On

CPU SPEED SELECTION (INTEL)

CPU speed	Clock speed	Multiplier	SW1/1	SW1/2	SW1/3	SW1/4	SW1/5	SW1/6
90MHz	60MHz	1.5x	Off	Off	Off	On	Off	Off
100MHz	66MHz	1.5x	Off	Off	Off	Off	Off	Off
120MHz	60MHz	2x	On	Off	Off	On	Off	Off
133MHz	66MHz	2x	On	Off	Off	Off	Off	Off
150MHz	60MHz	2.5x	On	On	Off	On	Off	Off
166MHz	66MHz	2.5x	On	On	Off	Off	Off	Off
180MHz	66MHz	3x	Off	On	Off	On	Off	Off
200MHz	66MHz	3x	Off	On	Off	Off	Off	Off

CPU SPEED SELECTION (INTEL MMX)

CPU speed	Clock speed	Multiplier	SW1/1	SW1/2	SW1/3	SW1/4	SW1/5	SW1/6
166MHz	66MHz	2.5x	On	On	Off	Off	Off	Off
180MHz	66MHz	3x	Off	On	Off	On	Off	Off
200MHz	66MHz	3x	Off	On	Off	Off	Off	Off
233MHz	66MHz	3.5x	Off	Off	Off	Off	Off	Off

CPU VOLTAGE SELECTION

Voltage	JP30
2.0v	Open
2.1v	Pins 5 & 6 closed
2.2v	Pins 3 & 4 closed
2.3v	Pins 3 & 4, 5 & 6 closed
2.4v	Pins 7 & 8 closed
2.5v	Pins 5 & 6, 7 & 8 closed
2.6v	Pins 3 & 4, 7 & 8 closed
2.7v	Pins 3 & 4, 5 & 6, 7 & 8 closed
2.8v	Pins 1 & 2, 11 & 12 closed
2.9v	Pins 1 & 2, 5 & 6 closed
3.0v	Pins 1 & 2, 3 & 4 closed
3.1v	Pins 1 & 2, 3 & 4, 5 & 6 closed
3.2v	Pins 1 & 2, 7 & 8 closed
3.3v	Pins 1 & 2, 9 & 10 closed
3.4v	Pins 1 & 2, 3 & 4, 7 & 8 closed
3.5v	Pins 1 & 2, 11 & 12 closed

POWER SUPPLY SELECTION

Type	JP2	JP6
» AT	Pins 2 & 3 closed	Pins 2 & 3 closed
» ATX	Pins 1 & 2 closed	Pins 1 & 2 closed

HOST BUS FREQUENCY SELECTION

CPU host bus	AGP host bus	PCI hose bus	JP7	JP8
» 66MHz	66MHz	33MHz	Pins 2 & 3 closed	Open

	100MHz	66MHz	33MHz	Pins 1 & 2 closed	Pins 2 & 3 closed
--	--------	-------	-------	-------------------	-------------------