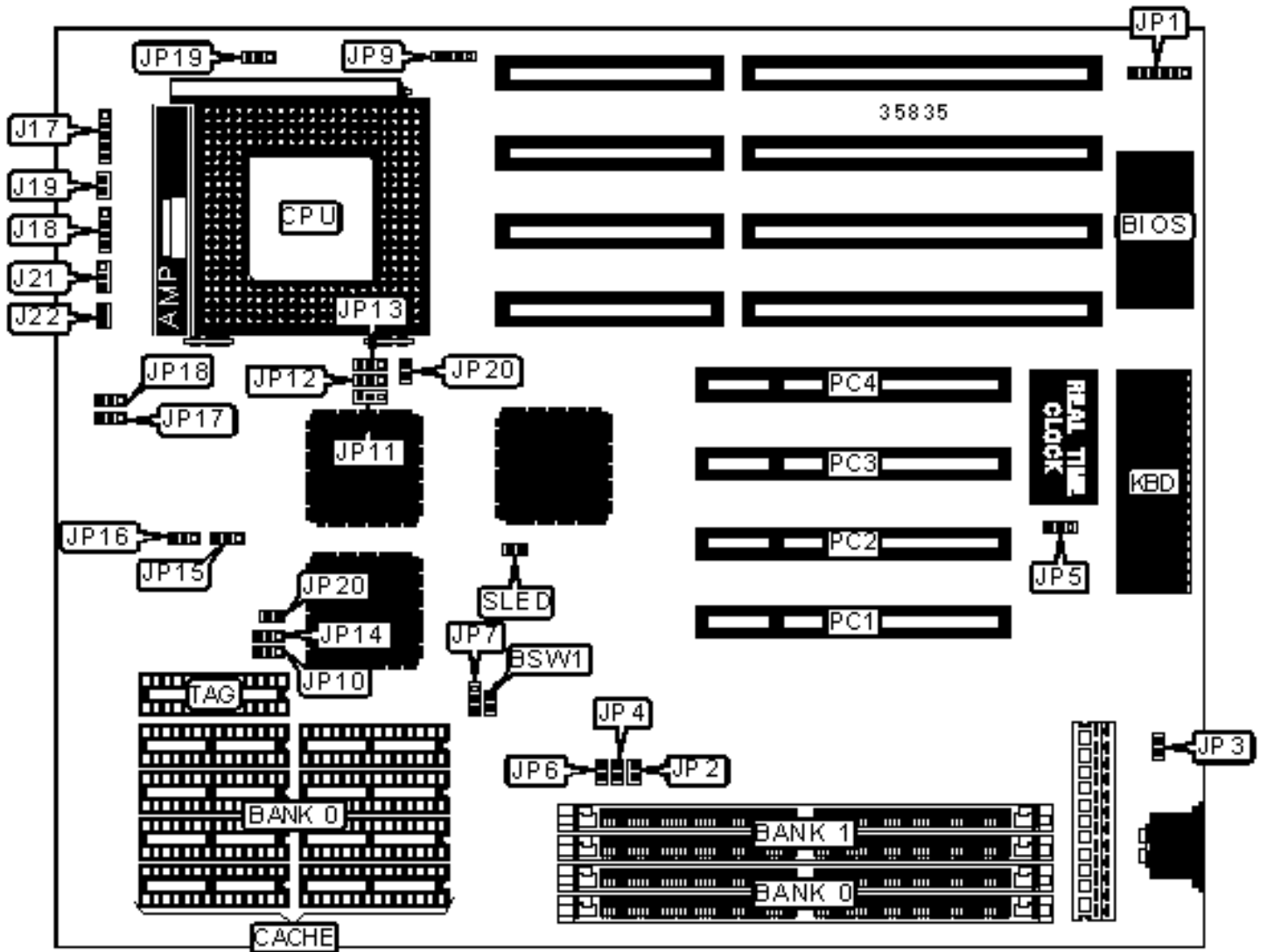


SOYO COMPUTER CO., LTD.

SY-033 A2/A5/A1M

Configuration



CONNECTIONS

Purpose	Location	Purpose	Location
Green PC connector	BSW1	Reset switch	J19
5v power	J2	Turbo switch	J21
3.3v power	J3	Turbo LED	J22
Power LED & keylock	J17	Chassis fan power	JP9
Speaker	J18	32-bit PCI slots	PC1 – PC4

USER CONFIGURABLE SETTINGS

Function	Label	Position
» BIOS type select EPROM	JP1	Pins 2 & 3, 4 & 5 closed
BIOS type select flash	JP1	Pins 1 & 2, 5 & 6 closed
» Monitor type select color	JP3	Closed
Monitor type select monochrome	JP3	Open
» Factory configured - do not alter	JP5	Unidentified
» Factory configured - do not alter	JP7	Pins 2 & 3 closed
» External fan controlled by JP18	JP8	Pins 1 & 2 closed
External fan always enabled	JP8	Pins 2 & 3 closed
» Factory configured - do not alter	JP11	Pins 1 & 2 closed
» Factory configured - do not alter	JP12	Pins 2 & 3 closed
» Factory configured - do not alter	JP13	Pins 1 & 2 closed
» Clock generator select stopped by STPCLK	JP17	Pins 1 & 2 closed
Clock generator select stopped by SMOUT	JP17	Pins 2 & 3 closed
» Fan control select stopped by STPCLK	JP18	Pins 1 & 2 closed
Fan control select stopped by SMOUT	JP18	Pins 2 & 3 closed
» Factory configured - do not alter	JP20	Pins 2 & 3 closed

»	Factory configured - do not alter	SLED	Unidentified
Note: The location of JP8 is unidentified.			

SIMM CONFIGURATION		
Size	Bank 0	Bank 1
2MB	(2) 256K x 36	None
4MB	(2) 512K x 36	None
4MB	(2) 256K x 36	(2) 256K x 36
8MB	(2) 1M x 36	None
8MB	(2) 512K x 36	(2) 512K x 36
12MB	(2) 512K x 36	(2) 1M x 36
16MB	(2) 2M x 36	None
16MB	(2) 1M x 36	(2) 1M x 36
20MB	(2) 512K x 36	(2) 2M x 36
24MB	(2) 1M x 36	(2) 2M x 36
32MB	(2) 4M x 36	None
32MB	(2) 2M x 36	(2) 2M x 36
36MB	(2) 512K x 36	(2) 4M x 36
40MB	(2) 1M x 36	(2) 4M x 36
48MB	(2) 2M x 36	(2) 4M x 36
64MB	(2) 8M x 36	None
64MB	(2) 4M x 36	(2) 4M x 36
72MB	(2) 1M x 36	(2) 8M x 36
80MB	(2) 2M x 36	(2) 8M x 36
96MB	(2) 4M x 36	(2) 8M x 36
128MB	(2) 8M x 36	(2) 8M x 36

128MB	(2) 16M x 36	None
-------	--------------	------

SIMM JUMPER CONFIGURATION		
Size	JP15	JP16
2MB	Pins 1 & 2 closed	Pins 1 & 2 closed
4MB	Pins 1 & 2 closed	Pins 1 & 2 closed
4MB	Pins 2 & 3 closed	Pins 2 & 3 closed
8MB	Pins 2 & 3 closed	Pins 2 & 3 closed
8MB	Pins 1 & 2 closed	Pins 1 & 2 closed
12MB	Pins 1 & 2 closed	Pins 1 & 2 closed
16MB	Pins 1 & 2 closed	Pins 1 & 2 closed
16MB	Pins 2 & 3 closed	Pins 2 & 3 closed
20MB	Pins 2 & 3 closed	Pins 2 & 3 closed
24MB	Pins 1 & 2 closed	Pins 1 & 2 closed
32MB	Pins 2 & 3 closed	Pins 2 & 3 closed
32MB	Pins 1 & 2 closed	Pins 1 & 2 closed
36MB	Pins 2 & 3 closed	Pins 2 & 3 closed
40MB	Pins 1 & 2 closed	Pins 1 & 2 closed
48MB	Pins 2 & 3 closed	Pins 2 & 3 closed
64MB	Pins 1 & 2 closed	Pins 1 & 2 closed
64MB	Pins 2 & 3 closed	Pins 2 & 3 closed
72MB	Pins 1 & 2 closed	Pins 1 & 2 closed
80MB	Pins 2 & 3 closed	Pins 2 & 3 closed
96MB	Pins 1 & 2 closed	Pins 1 & 2 closed
128MB	Pins 2 & 3 closed	Pins 2 & 3 closed
128MB	Pins 1 & 2 closed	Pins 1 & 2 closed

CACHE CONFIGURATION		
Size	Bank 0	TAG
256KB	(8) 32K x 8	(1) 8K x 8
512KB	(8) 64K x 8	(1) 16K x 8
1MB	(8) 128K x 8	(1) 32K x 8

CACHE JUMPER CONFIGURATION			
Size	JP10	JP14	JP20
256KB	Pins 2 & 3 closed	Pins 1 & 2 closed	Open
512KB	Pins 1 & 2 closed	Pins 1 & 2 closed	Closed
1MB	Pins 2 & 3 closed	Pins 2 & 3 closed	Closed

CPU SPEED SELECTION					
CPU speed	Clock speed	Multiplier	JP2	JP4	JP6
75MHz	50MHz	1.5x	Open	Open	Open
90MHz	60MHz	1.5x	Closed	Open	Open
100MHz	66MHz	1.5x	Closed	Closed	Closed