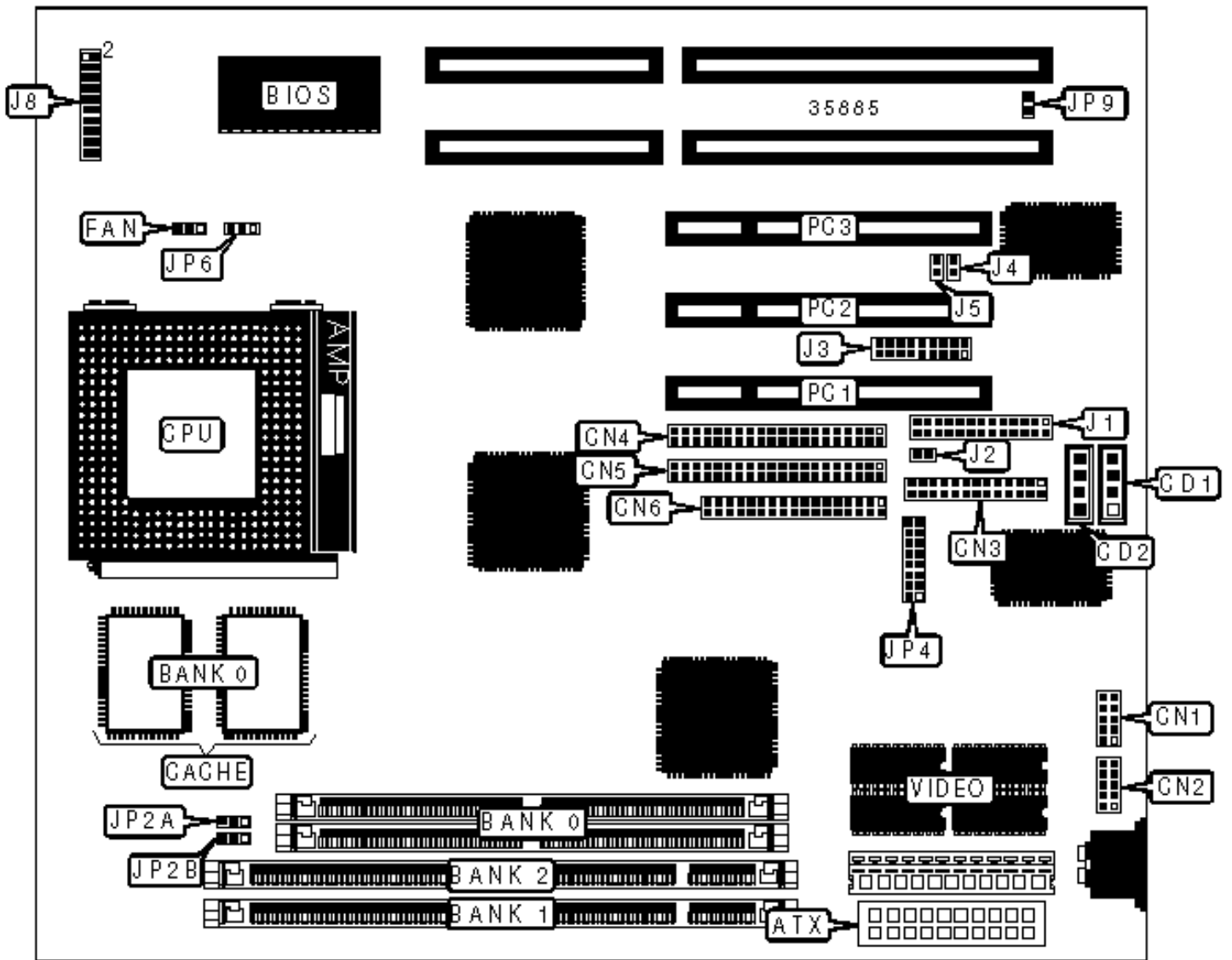


PC CHIPS MANUFACTURING, LTD.

M590

Configuration



CONNECTIONS

| Purpose | Location | Purpose | Location |
|------------------------|----------|-------------------------|--------------------|
| ATX power connector | ATX | ATX form card connector | J3 |
| Audio in – CD-ROM | CD1 | Digital audio out | J4 |
| Audio in – CD-ROM | CD2 | Digital audio in | J5 |
| Serial port 2 | CN1 | Speaker | J8/pins 1/3/5/7 |
| Serial port 1 | CN2 | Power LED & keylock | J8/pins 2/4/6/8/10 |
| Parallel port | CN3 | Turbo LED | J8/pins 13 & 14 |
| IDE interface 2 | CN4 | IDE interface LED | J8/pins 15 & 16 |
| IDE interface 1 | CN5 | Reset switch | J8/pins 17 & 18 |
| Floppy drive interface | CN6 | Soft off power supply | J8/pins 19 & 20 |
| Chassis fan power | FAN | VGA interface | JP4 |
| Sound/game connector | J1 | 32-bit PCI slots | PC1 – PC3 |

USER CONFIGURABLE SETTINGS

| Function | Label | Position |
|---------------------------------|-------|-------------------|
| » Microphone type select normal | J2 | Open |
| Microphone type select special | J2 | Closed |
| » CMOS memory normal operation | JP6 | Pins 1 & 2 closed |
| CMOS memory clear | JP6 | Pins 2 & 3 closed |
| On board sound enabled | JP9 | Open |
| On board sound disabled | JP9 | Closed |

SIMM CONFIGURATION

| Size | Bank 0 |
|------|-------------|
| 8MB | (2) 1M x 36 |

| | |
|---------------------------------|--------------|
| 16MB | (2) 2M x 36 |
| 32MB | (2) 4M x 36 |
| 64MB | (2) 8M x 36 |
| 128MB | (2) 16M x 36 |
| 256MB | (2) 32M x 36 |
| Note: Board accepts EDO memory. | |

| DIMM CONFIGURATION | | |
|---------------------------|--------------|-------------|
| Size | Bank 1 | Bank 2 |
| 8MB | (1) 1M x 64 | None |
| 16MB | (1) 2M x 64 | None |
| 16MB | (1) 1M x 64 | (1) 1M x 64 |
| 24MB | (1) 2M x 64 | (1) 1M x 64 |
| 32MB | (1) 4M x 64 | None |
| 32MB | (1) 2M x 64 | (1) 2M x 64 |
| 40MB | (1) 4M x 64 | (1) 1M x 64 |
| 48MB | (1) 4M x 64 | (1) 2M x 64 |
| 64MB | (1) 8M x 64 | None |
| 64MB | (1) 4M x 64 | (1) 4M x 64 |
| 72MB | (1) 8M x 64 | (1) 1M x 64 |
| 80MB | (1) 8M x 64 | (1) 2M x 64 |
| 96MB | (1) 8M x 64 | (1) 4M x 64 |
| 128MB | (1) 16M x 64 | None |
| 128MB | (1) 8M x 64 | (1) 8M x 64 |
| 136MB | (1) 16M x 64 | (1) 1M x 64 |
| 144MB | (1) 16M x 64 | (1) 2M x 64 |

| | | |
|-----------------------------------|--------------|--------------|
| 160MB | (1) 16M x 64 | (1) 4M x 64 |
| 192MB | (1) 16M x 64 | (1) 8M x 64 |
| 256MB | (1) 16M x 64 | (1) 16M x 64 |
| Note: Board accepts SDRAM memory. | | |

| DIMM VOLTAGE CONFIGURATION | | |
|-----------------------------------|-------------------|-------------------|
| Voltage | JP2A | JP2B |
| 3.3v | Pins 2 & 3 closed | Pins 2 & 3 closed |
| 5v | Pins 1 & 2 closed | Pins 1 & 2 closed |

| VIDEO MEMORY CONFIGURATION |
|---|
| Note: The size of the video memory is unidentified. |

| CACHE CONFIGURATION | |
|----------------------------|--------------|
| Size | Bank 0 |
| 1MB | (2) 64K x 64 |