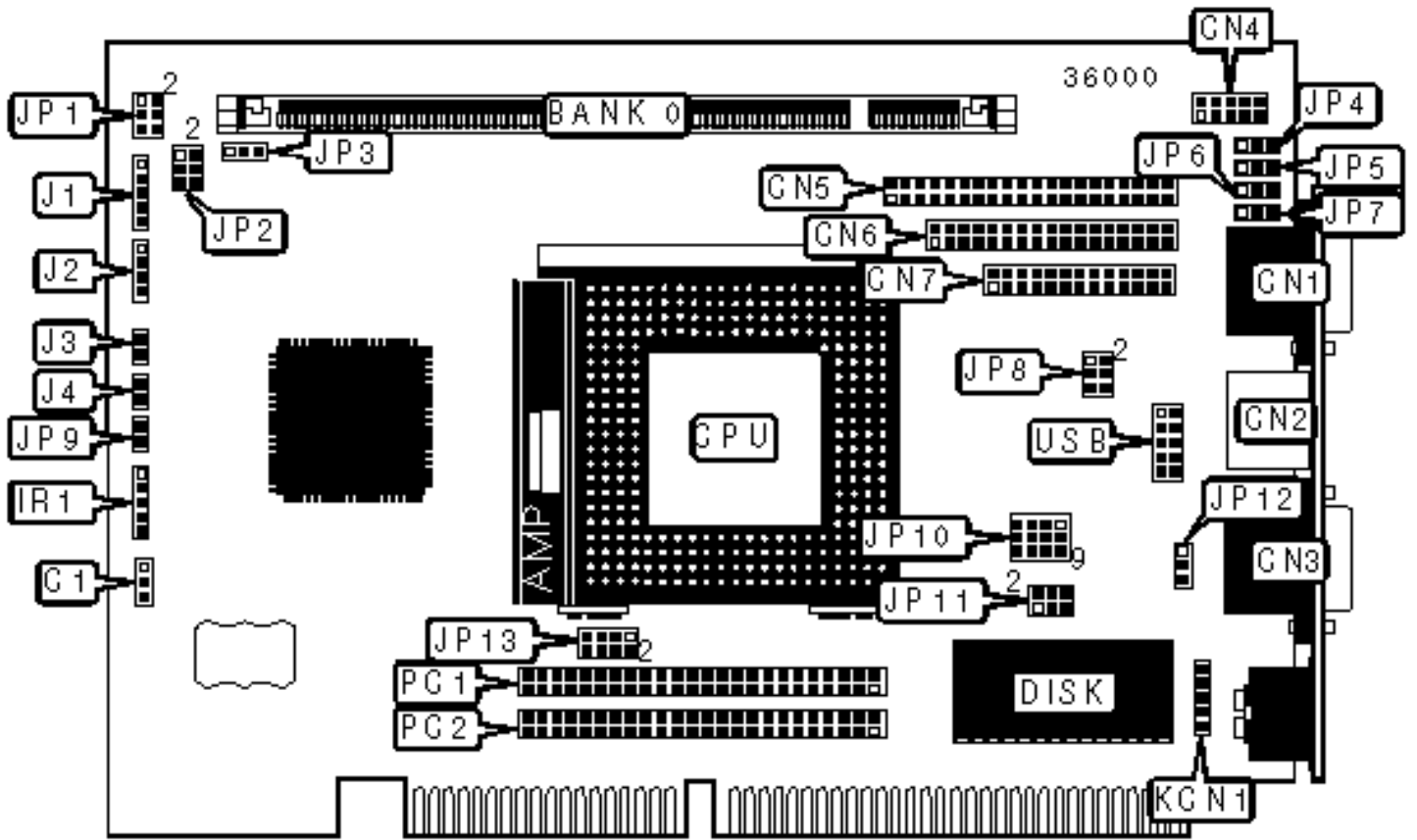


LANNER ELECTRONICS, INC.

AP-545V

Configuration



CONNECTIONS

Purpose	Location	Purpose	Location
Chassis fan power	C1	Power LED & keylock	J1
VGA port	CN1	Speaker	J2
PS/2 mouse port	CN2	IDE interface LED	J3
Serial port 1	CN3	Reset switch	J4
Serial port 2	CN4	ACPI LED	JP9
IDE interface	CN5	Auxiliary keyboard connector	KCN1
Floppy drive interface	CN6	PCI bus connector	PC1
Parallel port	CN7	PCI bus connector	PC2
IR connector	IR1	USB connector	USB

USER CONFIGURABLE SETTINGS

Function	Label	Position
» On board video enabled	JP3	Pins 2 & 3 closed
On board video disabled	JP3	Pins 1 & 2 closed

SIMM CONFIGURATION

Size	Bank 0
8MB	(1) 1M x 64
16MB	(1) 2M x 64
32MB	(1) 4M x 64
64MB	(1) 8M x 64
128MB	(1) 16M x 64

Note: Board accepts SDRAM memory.

CACHE CONFIGURATION

Note: The location of the cache is unidentified.

CPU SPEED SELECTION (CX 6X86)

CPU speed	Clock speed	Multiplier	JP1	JP2
120MHz	50MHz	2x	1 & 2	1 & 2, 3 & 4, 5 & 6
150MHz	60MHz	2x	1 & 2	1 & 2
166MHz	66MHz	2x	1 & 2	Open

Note: Pins designated should be in the closed position.

CPU SPEED SELECTION (CX MII)

CPU speed	Clock speed	Multiplier	JP1	JP2
200MHz	60MHz	3x	3 & 4	1 & 2
200MHz	66MHz	2.5x	1 & 2, 3 & 4	Open
233MHz	66MHz	3x	3 & 4	Open
233MHz	75MHz	2.5x	1 & 2, 3 & 4	3 & 4, 5 & 6

Note: Pins designated should be in the closed position.

CPU SPEED SELECTION (AM K5)

CPU speed	Clock speed	Multiplier	JP1	JP2
75MHz	50MHz	1.5x	Open	1 & 2, 3 & 4, 5 & 6
90MHz	60MHz	1.5x	Open	1 & 2
100MHz	66MHz	1.5x	Open	Open
120MHz	60MHz	2x	1 & 2	1 & 2
133MHz	66MHz	2x	1 & 2	Open
166MHz	66MHz	2.5x	1 & 2, 3 & 4	Open

Note: Pins designated should be in the closed position.

CPU SPEED SELECTION (AM K6)

CPU speed	Clock speed	Multiplier	JP1	JP2
166MHz	66MHz	2.5x	1 & 2, 3 & 4	Open
200MHz	66MHz	3x	3 & 4	Open
233MHz	66MHz	3.5x	Open	Open

Note: Pins designated should be in the closed position.

CPU SPEED SELECTION (INTEL)

CPU speed	Clock speed	Multiplier	JP1	JP2
75MHz	50MHz	1.5x	Open	1 & 2, 3 & 4, 5 & 6
90MHz	60MHz	1.5x	Open	1 & 2
100MHz	66MHz	1.5x	Open	Open
120MHz	60MHz	2x	1 & 2	1 & 2
133MHz	66MHz	2x	1 & 2	Open
150MHz	60MHz	2.5x	1 & 2, 3 & 4	1 & 2
166MHz	66MHz	2.5x	1 & 2, 3 & 4	Open
200MHz	66MHz	3x	3 & 4	Open

Note: Pins designated should be in the closed position.

CPU SPEED SELECTION (INTEL MMX)

CPU speed	Clock speed	Multiplier	JP1	JP2
166MHz	66MHz	2.5x	1 & 2, 3 & 4	Open
200MHz	66MHz	3x	3 & 4	Open
233MHz	66MHz	3.5x	Open	Open

Note: Pins designated should be in the closed position.

CPU VOLTAGE SELECTION

Voltage		JP13
	1.24v	Open
	2.1v	Pins 1 & 2 closed
	2.2v	Pins 3 & 4 closed
	2.3v	Pins 1 & 2, 3 & 4 closed
	2.4v	Pins 5 & 6 closed
	2.5v	Pins 1 & 2, 5 & 6 closed
	2.6v	Pins 3 & 4, 5 & 6 closed
	2.7v	Pins 1 & 2, 3 & 4, 5 & 6 closed
»	2.8v	Pins 7 & 8 closed
	2.9v	Pins 1 & 2, 7 & 8 closed
	3.0v	Pins 3 & 4, 7 & 8 closed
	3.1v	Pins 1 & 2, 3 & 4, 7 & 8 closed
	3.2v	Pins 5 & 6, 7 & 8 closed
	3.3v	Pins 1 & 2, 5 & 6, 7 & 8 closed
	3.4v	Pins 3 & 4, 5 & 6, 7 & 8 closed
	3.5v	Pins 1 & 2, 3 & 4, 5 & 6, 7 & 8 closed

SERIAL PORT 4 SELECTION

Setting	JP4	JP5	JP6	JP7	JP8
» RS-232	1 & 2	1 & 2	1 & 2	1 & 2	1 & 2
RS-422	3 & 4	2 & 3	2 & 3	2 & 3	2 & 3
RS-485	5 & 6	2 & 3	2 & 3	2 & 3	2 & 3

Note: Pins designated should be in the closed position.

WATCHDOG TIME OUT SELECTION

Seconds	JP10
.5	Pins 1 & 5 closed
1	Pins 2 & 6 closed
2	Pins 3 & 7 closed
4	Pins 4 & 8 closed
8	Pins 8 & 12 closed
16	Pins 7 & 11 closed
32	Pins 6 & 10 closed
64	Pins 5 & 9 closed

WATCHDOG SELECTION

Setting	JP12
» Reset	Pins 1 & 2 closed
NMI system	Pins 2 & 3 closed
Disabled	Open

DISK ON CHIP ADDRESS SELECTION

Address	JP11
C8000	Pins 1 & 2 closed
D0000	Pins 3 & 4 closed
D8000	Pins 5 & 6 closed
» Disabled	Pins 2 & 4 closed