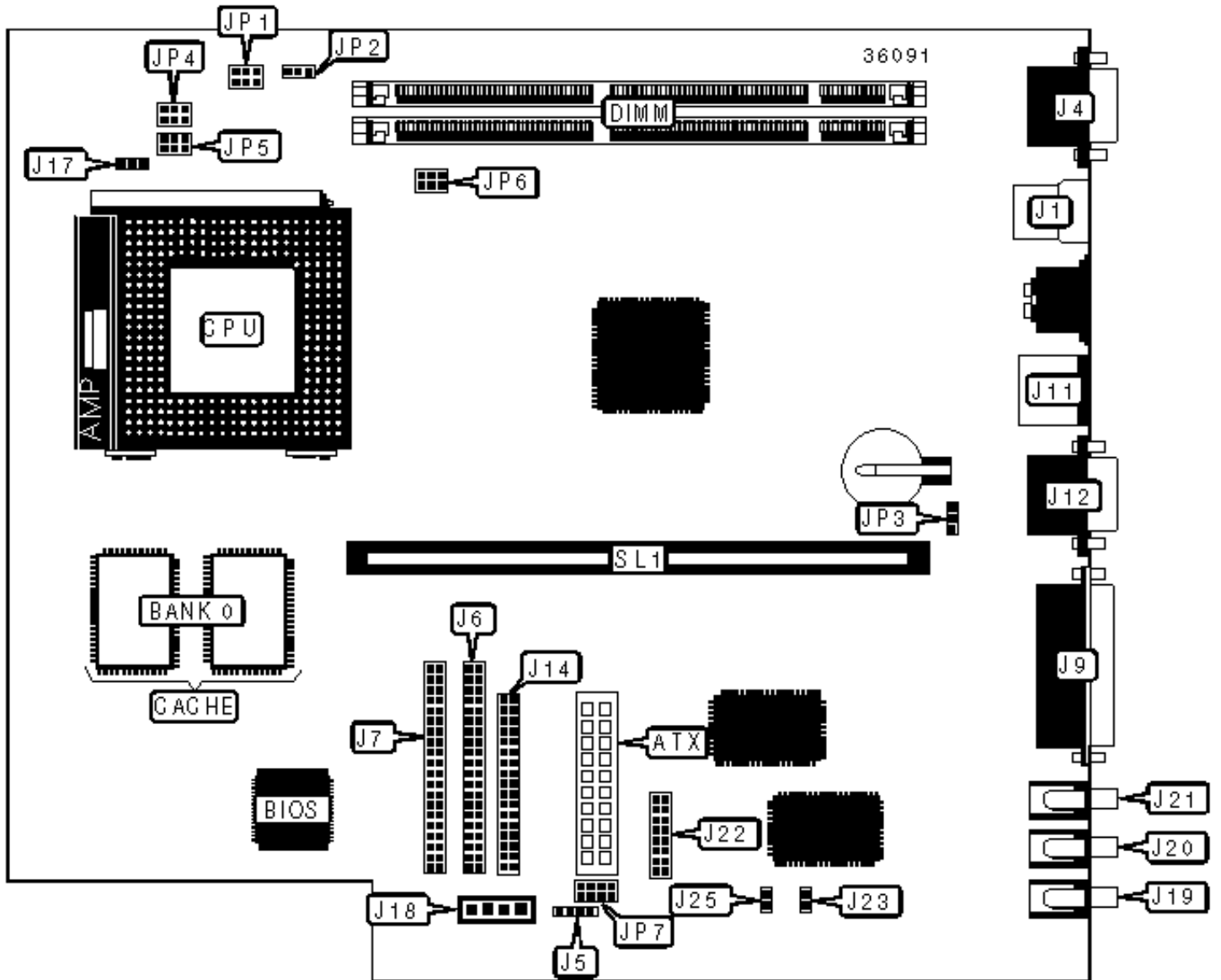


IBM CORPORATION

APTIVA 2156 SL-A

Configuration



CONNECTIONS

Purpose	Location	Purpose	Location
ATX power connector	ATX	Audio in – CD-ROM	J18
USB connector	J1	Line out	J19
VGA port	J4	Line in	J20
Buzzer	J5	Microphone in	J21
IDE interface 1	J6	Game interface	J22
IDE interface 2	J7	Speaker	J23
Parallel port	J9	Speaker	J25
PS/2 mouse port	J11	Soft off power supply	JP7/pins 1 & 3
Serial port 1	J12	ACP LED	JP7/pins 2/4/6
Floppy drive interface	J14	IDE interface LED	JP7/pins 5 & 7
Chassis fan power	J17	Riser slot	SL1

USER CONFIGURABLE SETTINGS

Function	Label	Position
» CMOS memory normal operation	JP3	Pins 1 & 2 closed
CMOS memory clear	JP3	Pins 2 & 3 closed

DIMM CONFIGURATION

Size	Bank 0	Bank 1
8MB	(1) 1M x 64	None
16MB	(1) 2M x 64	None
16MB	(1) 1M x 64	(1) 1M x 64
24MB	(1) 2M x 64	(1) 1M x 64
32MB	(1) 4M x 64	None

32MB	(1) 2M x 64	(1) 2M x 64
40MB	(1) 4M x 64	(1) 1M x 64
48MB	(1) 4M x 64	(1) 2M x 64
64MB	(1) 8M x 64	None
64MB	(1) 4M x 64	(1) 4M x 64
72MB	(1) 8M x 64	(1) 1M x 64
80MB	(1) 8M x 64	(1) 2M x 64
96MB	(1) 8M x 64	(1) 4M x 64
128MB	(1) 16M x 64	None
128MB	(1) 8M x 64	(1) 8M x 64
136MB	(1) 16M x 64	(1) 1M x 64
144MB	(1) 16M x 64	(1) 2M x 64
160MB	(1) 16M x 64	(1) 4M x 64
192MB	(1) 16M x 64	(1) 8M x 64
256MB	(1) 16M x 64	(1) 16M x 64
Note: Board accepts SDRAM memory.		

CACHE CONFIGURATION

Size	Bank 0
512KB	(2) 64K x 32

VIDEO MEMORY CONFIGURATION

Note: The location of the video memory is unidentified.

CPU BUS SPEED SELECTION

Speed	JP6
-------	-----

60MHz	Pins 1 & 3, 4 & 6 closed
66MHz	Pins 1 & 3, 2 & 4 closed
75MHz	Pins 2 & 4, 3 & 5 closed

CPU MULTIPLIER SELECTION		
Multiplier	JP1	JP2
2x	Pins 1 & 2 closed	Pins 1 & 3, 4 & 6 closed
2.5x	Pins 1 & 2 closed	Pins 1 & 3, 2 & 4 closed
3x	Pins 1 & 2 closed	Pins 2 & 4, 3 & 5 closed
3.5x	Pins 1 & 2 closed	Pins 3 & 5, 4 & 6 closed
4x	Pins 2 & 3 closed	Pins 1 & 3, 2 & 4 closed
4.5x	Pins 2 & 3 closed	Pins 1 & 3, 2 & 4 closed
5x	Pins 2 & 3 closed	Pins 2 & 4, 3 & 5 closed
5.5x	Pins 2 & 3 closed	Pins 3 & 5, 4 & 6 closed

CPU VOLTAGE SELECTION		
Voltage	JP4	JP5
1.94	Pins 3 & 5, 4 & 6 closed	Pins 2 & 4, 3 & 5 closed
2.24	Pins 2 & 4, 3 & 5 closed	Pins 1 & 3, 2 & 4 closed
2.84	Pins 1 & 3, 2 & 4 closed	Pins 1 & 3, 2 & 4 closed
2.94	Pins 1 & 3, 2 & 4 closed	Pins 1 & 3, 4 & 6 closed
3.24	Pins 1 & 3, 2 & 4 closed	Pins 2 & 4, 3 & 5 closed