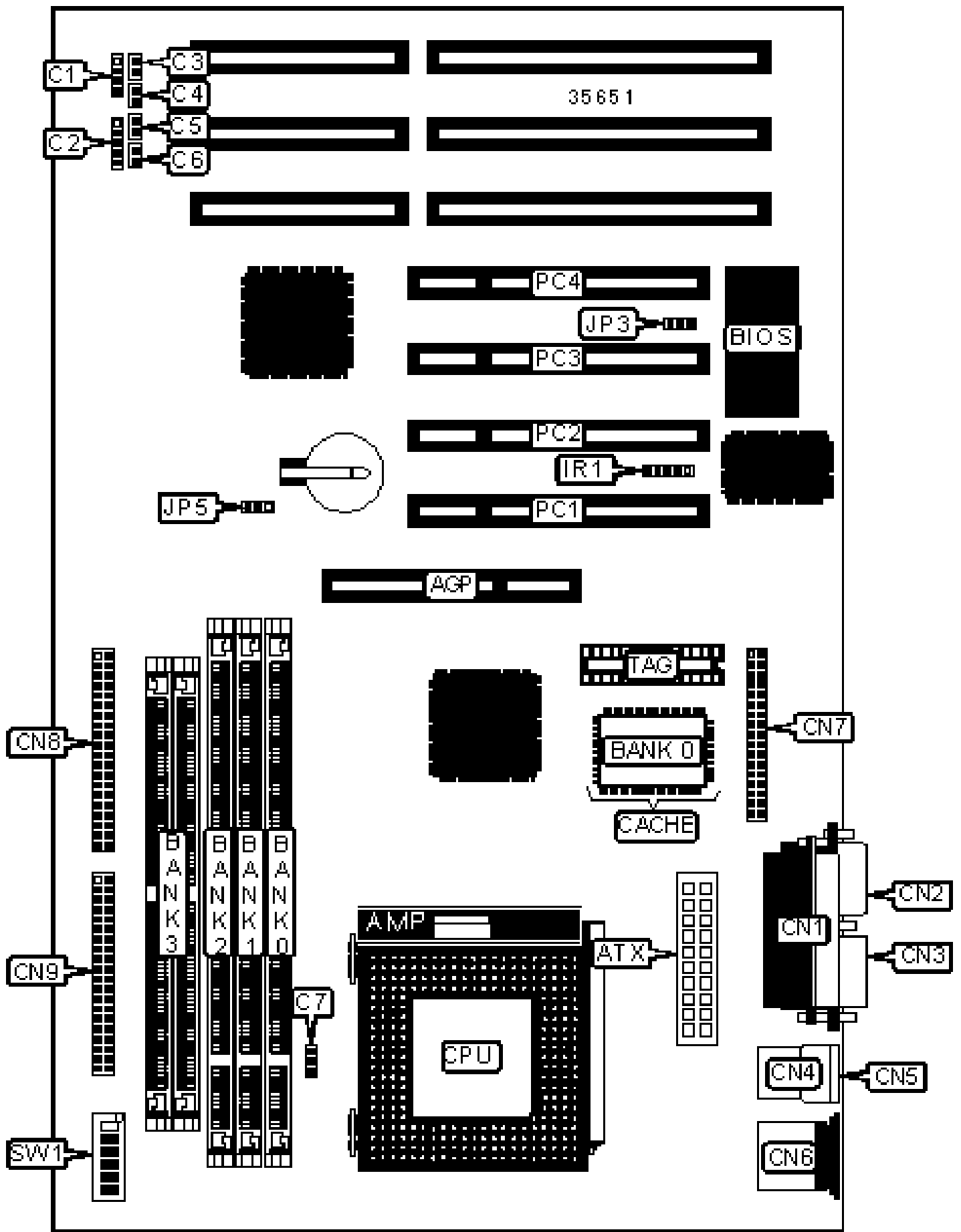


FREE COMPUTER TECHNOLOGY, INC.

P5F88

Configuration



CONNECTIONS

Purpose	Location	Purpose	Location
AGP slot	AGP	Serial port 2	CN3
ATX power connector	ATX	USB connector 1	CN4
Speaker	C1	USB connector 2	CN5
Power LED & keylock	C2	PS/2 mouse port	CN6
IDE interface LED	C3	Floppy drive interface	CN7
Standby LED	C4	IDE interface 1	CN8
Reset switch	C5	IDE interface 2	CN9
Soft off power supply	C6	IR connector	IR1
Chassis fan power	C7	Wake on LAN connector	JP3
Parallel port	CN1	32-bit PCI slots	PC1 – PC4
Serial port 1	CN2		

USER CONFIGURABLE SETTINGS

Function	Label	Position
» CMOS memory normal operation	JP5	Pins 1 & 2 closed
CMOS memory clear	JP5	Pins 2 & 3 closed

SIMM CONFIGURATION

Size	Bank 3
8MB	(2) 1M x 36
16MB	(2) 2M x 36
32MB	(2) 4M x 36
64MB	(2) 8M x 36
128MB	(2) 16M x 36

256MB	(2) 32M x 36
Note: Board accepts EDO memory.	

DIMM CONFIGURATION			
Size	Bank 0	Bank 1	Bank 2
8MB	(1) 1M x 64	None	None
16MB	(1) 2M x 64	None	None
16MB	(1) 1M x 64	(1) 1M x 64	None
24MB	(1) 2M x 64	(1) 1M x 64	None
24MB	(1) 1M x 64	(1) 1M x 64	(1) 1M x 64
32MB	(1) 4M x 64	None	None

DIMM CONFIGURATION (CON'T)			
Size	Bank 0	Bank 1	Bank 2
32MB	(1) 2M x 64	(1) 1M x 64	(1) 1M x 64
32MB	(1) 2M x 64	(1) 2M x 64	None
40MB	(1) 4M x 64	(1) 1M x 64	None
40MB	(1) 2M x 64	(1) 2M x 64	(1) 1M x 64
48MB	(1) 4M x 64	(1) 1M x 64	(1) 1M x 64
48MB	(1) 4M x 64	(1) 2M x 64	None
48MB	(1) 2M x 64	(1) 2M x 64	(1) 2M x 64
56MB	(1) 4M x 64	(1) 2M x 64	(1) 1M x 64
64MB	(1) 8M x 64	None	None
64MB	(1) 4M x 64	(1) 2M x 64	(1) 2M x 64
64MB	(1) 4M x 64	(1) 4M x 64	None
72MB	(1) 8M x 64	(1) 1M x 64	None

72MB	(1) 4M x 64	(1) 4M x 64	(1) 1M x 64
80MB	(1) 8M x 64	(1) 1M x 64	(1) 1M x 64
80MB	(1) 8M x 64	(1) 2M x 64	None
80MB	(1) 4M x 64	(1) 4M x 64	(1) 2M x 64
88MB	(1) 8M x 64	(1) 2M x 64	(1) 1M x 64
96MB	(1) 8M x 64	(1) 2M x 64	(1) 2M x 64
96MB	(1) 8M x 64	(1) 4M x 64	None
96MB	(1) 4M x 64	(1) 4M x 64	(1) 4M x 64
104MB	(1) 8M x 64	(1) 4M x 64	(1) 1M x 64
112MB	(1) 8M x 64	(1) 4M x 64	(1) 2M x 64
128MB	(1) 16M x 64	None	None
128MB	(1) 8M x 64	(1) 4M x 64	(1) 4M x 64
128MB	(1) 8M x 64	(1) 8M x 64	None
136MB	(1) 16M x 64	(1) 1M x 64	None
136MB	(1) 8M x 64	(1) 8M x 64	(1) 1M x 64
144MB	(1) 16M x 64	(1) 1M x 64	(1) 1M x 64
144MB	(1) 16M x 64	(1) 2M x 64	None
144MB	(1) 8M x 64	(1) 8M x 64	(1) 2M x 64
152MB	(1) 16M x 64	(1) 2M x 64	(1) 1M x 64
160MB	(1) 16M x 64	(1) 2M x 64	(1) 2M x 64
160MB	(1) 16M x 64	(1) 4M x 64	None
160MB	(1) 8M x 64	(1) 8M x 64	(1) 4M x 64

DIMM CONFIGURATION (CON'T)

Size	Bank 0	Bank 1	Bank 2
168MB	(1) 16M x 64	(1) 4M x 64	(1) 1M x 64

176MB	(1) 16M x 64	(1) 4M x 64	(1) 2M x 64
192MB	(1) 16M x 64	(1) 4M x 64	(1) 4M x 64
192MB	(1) 16M x 64	(1) 8M x 64	None
192MB	(1) 8M x 64	(1) 8M x 64	(1) 8M x 64
200MB	(1) 16M x 64	(1) 8M x 64	(1) 1M x 64
208MB	(1) 16M x 64	(1) 8M x 64	(1) 2M x 64
224MB	(1) 16M x 64	(1) 8M x 64	(1) 4M x 64
256MB	(1) 32M x 64	None	None
256MB	(1) 16M x 64	(1) 8M x 64	(1) 8M x 64
264MB	(1) 32M x 64	(1) 1M x 64	None
272MB	(1) 32M x 64	(1) 1M x 64	(1) 1M x 64
272MB	(1) 32M x 64	(1) 2M x 64	None
288MB	(1) 32M x 64	(1) 2M x 64	(1) 2M x 64
288MB	(1) 32M x 64	(1) 4M x 64	None
320MB	(1) 32M x 64	(1) 4M x 64	(1) 4M x 64
320MB	(1) 32M x 64	(1) 8M x 64	None
384MB	(1) 32M x 64	(1) 8M x 64	(1) 8M x 64
384MB	(1) 32M x 64	(1) 16M x 64	None
384MB	(1) 16M x 64	(1) 16M x 64	(1) 16M x 64
384MB	(1) 16M x 64	(1) 16M x 64	(1) 16M x 64
512MB	(1) 32M x 64	(1) 16M x 64	(1) 16M x 64
512MB	(1) 32M x 64	(1) 32M x 64	None
768MB	(1) 32M x 64	(1) 32M x 64	(1) 32M x 64
Note: Board accepts EDO & SDRAM memory.			

CACHE CONFIGURATION

Size	Bank 0
512KB	(1) 64K x 64

CPU SPEED SELECTION (CX 6X86L)								
CPU speed	Clock speed	Multiplier	SW1/1	SW1/2	SW1/3	SW1/4	SW1/5	SW1/6
133MHz	55MHz	2x	On	Off	Off	On	On	Off
150MHz	60MHz	2x	On	Off	Off	On	Off	Off
166MHz	66MHz	2x	On	Off	Off	Off	Off	Off

CPU SPEED SELECTION (IBM 6X86L)								
CPU speed	Clock speed	Multiplier	SW1/1	SW1/2	SW1/3	SW1/4	SW1/5	SW1/6
133MHz	55MHz	2x	On	Off	Off	On	On	Off
150MHz	60MHz	2x	On	Off	Off	On	Off	Off
166MHz	66MHz	2x	On	Off	Off	Off	Off	Off

CPU SPEED SELECTION (CX 6X86MX)								
CPU speed	Clock speed	Multiplier	SW1/1	SW1/2	SW1/3	SW1/4	SW1/5	SW1/6
166MHz	60MHz	2.5x	On	On	Off	On	Off	Off
166MHz	66MHz	2x	On	Off	Off	Off	Off	Off
200MHz	66MHz	2.5x	On	On	Off	Off	Off	Off
233MHz	66MHz	3x	Off	On	Off	Off	Off	Off
266MHz	66MHz	4x	Off	Off	Off	Off	Off	Off

CPU SPEED SELECTION (IBM 6X86MX)								
CPU speed	Clock speed	Multiplier	SW1/1	SW1/2	SW1/3	SW1/4	SW1/5	SW1/6
166MHz	60MHz	2.5x	On	On	Off	On	Off	Off

166MHz	66MHz	2x	On	Off	Off	Off	Off	Off
200MHz	66MHz	2.5x	On	On	Off	Off	Off	Off
233MHz	66MHz	3x	Off	On	Off	Off	Off	Off
266MHz	66MHz	4x	Off	Off	Off	Off	Off	Off

CPU SPEED SELECTION (AM K5)

CPU speed	Clock speed	Multiplier	SW1/1	SW1/2	SW1/3	SW1/4	SW1/5	SW1/6
75MHz	50MHz	1.5x	Off	Off	Off	On	On	On
90MHz	60MHz	1.5x	Off	Off	Off	On	Off	Off
100MHz	66MHz	1.5x	Off	Off	Off	Off	Off	Off
120MHz	60MHz	1.5x	Off	Off	Off	On	Off	Off
133MHz	66MHz	1.5x	Off	Off	Off	Off	Off	Off
150MHz	60MHz	1.75x	On	On	Off	On	Off	Off
166MHz	66MHz	1.75x	On	On	Off	Off	Off	Off

CPU SPEED SELECTION (AM K6)

CPU speed	Clock speed	Multiplier	SW1/1	SW1/2	SW1/3	SW1/4	SW1/5	SW1/6
166MHz	66MHz	2.5x	On	On	Off	Off	Off	Off
200MHz	66MHz	3x	Off	On	Off	Off	Off	Off
233MHz	66MHz	3.5x	Off	Off	Off	Off	Off	Off
266MHz	66MHz	4x	On	Off	On	Off	Off	Off
300MHz	66MHz	4.5x	On	On	On	Off	Off	Off

CPU SPEED SELECTION (INTEL)

CPU speed	Clock speed	Multiplier	SW1/1	SW1/2	SW1/3	SW1/4	SW1/5	SW1/6
75MHz	50MHz	1.5x	Off	Off	Off	On	On	On

90MHz	60MHz	1.5x	Off	Off	Off	On	Off	Off
100MHz	66MHz	1.5x	Off	Off	Off	Off	Off	Off
120MHz	60MHz	2x	On	Off	Off	On	Off	Off
133MHz	66MHz	2x	On	Off	Off	Off	Off	Off
150MHz	60MHz	2.5x	On	On	Off	On	Off	Off
166MHz	66MHz	2.5x	On	On	Off	Off	Off	Off
200MHz	66MHz	3x	Off	On	Off	Off	Off	Off

CPU SPEED SELECTION (INTEL MMX)

CPU speed	Clock speed	Multiplier	SW1/1	SW1/2	SW1/3	SW1/4	SW1/5	SW1/6
166MHz	66MHz	2.5x	On	On	Off	Off	Off	Off
200MHz	66MHz	3x	Off	On	Off	Off	Off	Off
233MHz	66MHz	3.5x	Off	Off	Off	Off	Off	Off