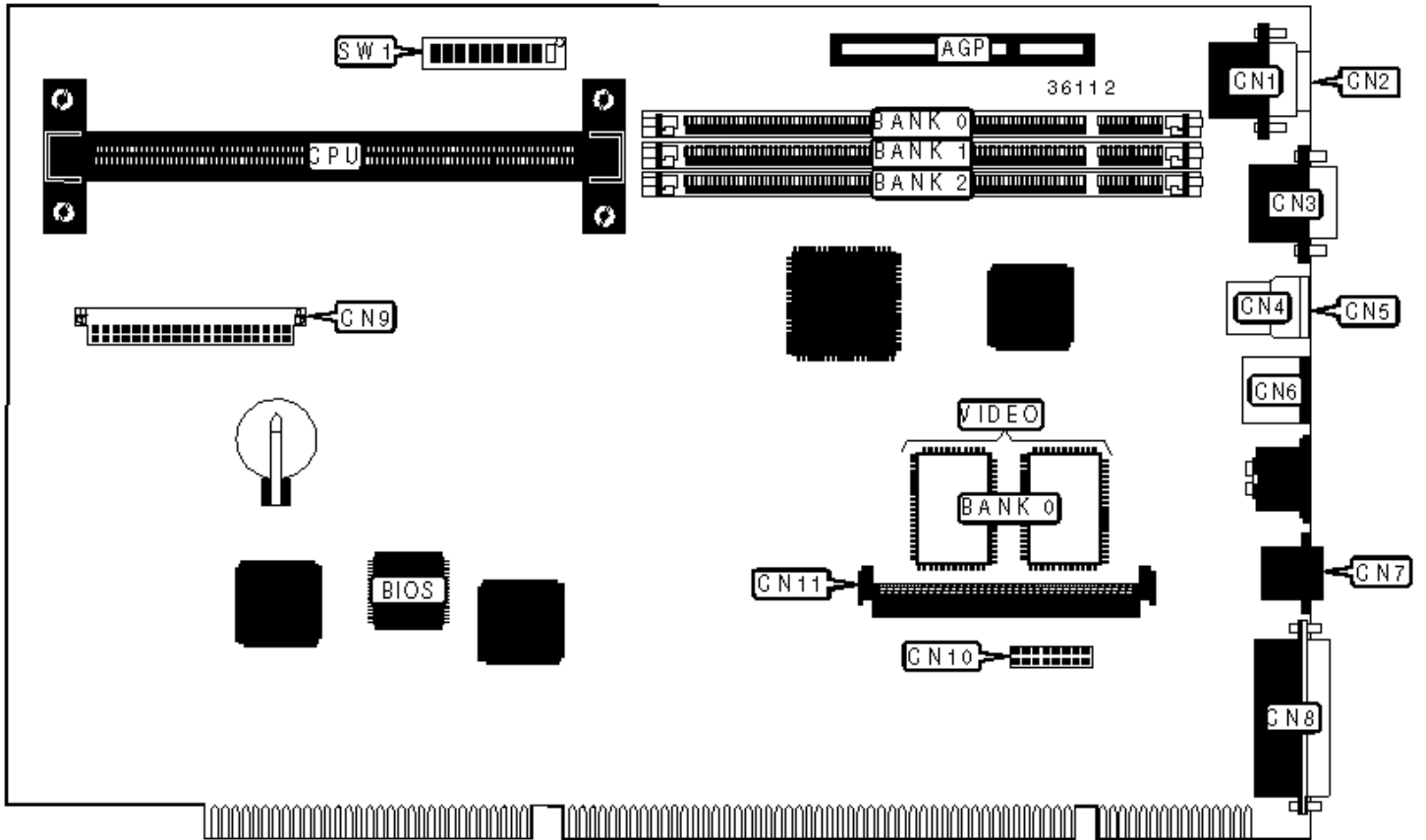


# DIGITAL EQUIPMENT CORPORATION

## PC 3500, PC 5510

### Configuration



## CONNECTIONS

| Purpose         | Location | Purpose                    | Location |
|-----------------|----------|----------------------------|----------|
| AGP slot        | AGP      | PS/2 mouse port            | CN6      |
| Serial port     | CN1      | Ethernet 10BaseT connector | CN7      |
| AGP video port  | CN2      | Parallel port              | CN8      |
| VGA port        | CN3      | VRM connector              | CN9      |
| USB connector 1 | CN4      | AUI/BNC connector          | CN10     |
| USB connector 2 | CN5      | Video upgrade connector    | CN11     |

## USER CONFIGURABLE SETTINGS

| Function                            | Label | Position |
|-------------------------------------|-------|----------|
| » Password normal operation         | SW1/1 | Off      |
| Password clear                      | SW1/1 | On       |
| » Flash BIOS normal operation       | SW1/2 | Off      |
| Flash BIOS recovery mode            | SW1/2 | On       |
| » CMOS memory normal operation      | SW1/3 | Off      |
| CMOS memory clear                   | SW1/3 | On       |
| » Factory configured - do not alter | SW1/4 | Off      |
| » Flash BIOS write protect disabled | SW1/5 | Off      |
| Flash BIOS write protect enabled    | SW1/5 | On       |
| » Factory configured - do not alter | SW1/6 | Off      |

## DIMM CONFIGURATION

| Size | Bank 0      | Bank 1      | Bank 2 |
|------|-------------|-------------|--------|
| 16MB | (1) 2M x 64 | None        | None   |
| 16MB | (1) 1M x 64 | (1) 1M x 64 | None   |

|      |             |             |             |
|------|-------------|-------------|-------------|
| 24MB | (1) 2M x 64 | (1) 1M x 64 | None        |
| 24MB | (1) 1M x 64 | (1) 1M x 64 | (1) 1M x 64 |
| 32MB | (1) 4M x 64 | None        | None        |
| 32MB | (1) 2M x 64 | (1) 1M x 64 | (1) 1M x 64 |
| 32MB | (1) 2M x 64 | (1) 2M x 64 | None        |
| 40MB | (1) 4M x 64 | (1) 1M x 64 | None        |
| 40MB | (1) 2M x 64 | (1) 2M x 64 | (1) 1M x 64 |
| 48MB | (1) 4M x 64 | (1) 1M x 64 | (1) 1M x 64 |
| 48MB | (1) 4M x 64 | (1) 2M x 64 | None        |
| 48MB | (1) 2M x 64 | (1) 2M x 64 | (1) 2M x 64 |
| 56MB | (1) 4M x 64 | (1) 2M x 64 | (1) 1M x 64 |
| 64MB | (1) 8M x 64 | None        | None        |
| 64MB | (1) 4M x 64 | (1) 2M x 64 | (1) 2M x 64 |
| 64MB | (1) 4M x 64 | (1) 4M x 64 | None        |
| 72MB | (1) 8M x 64 | (1) 1M x 64 | None        |
| 72MB | (1) 4M x 64 | (1) 4M x 64 | (1) 1M x 64 |
| 80MB | (1) 8M x 64 | (1) 1M x 64 | (1) 1M x 64 |
| 80MB | (1) 8M x 64 | (1) 2M x 64 | None        |

### DIMM CONFIGURATION (CON'T)

| Size | Bank 0      | Bank 1      | Bank 2      |
|------|-------------|-------------|-------------|
| 80MB | (1) 4M x 64 | (1) 4M x 64 | (1) 2M x 64 |
| 88MB | (1) 8M x 64 | (1) 2M x 64 | (1) 1M x 64 |
| 96MB | (1) 8M x 64 | (1) 2M x 64 | (1) 2M x 64 |
| 96MB | (1) 8M x 64 | (1) 4M x 64 | None        |
| 96MB | (1) 4M x 64 | (1) 4M x 64 | (1) 4M x 64 |

|                                   |              |              |              |
|-----------------------------------|--------------|--------------|--------------|
| 104MB                             | (1) 8M x 64  | (1) 4M x 64  | (1) 1M x 64  |
| 112MB                             | (1) 8M x 64  | (1) 4M x 64  | (1) 2M x 64  |
| 128MB                             | (1) 16M x 64 | None         | None         |
| 128MB                             | (1) 8M x 64  | (1) 4M x 64  | (1) 4M x 64  |
| 128MB                             | (1) 8M x 64  | (1) 8M x 64  | None         |
| 136MB                             | (1) 16M x 64 | (1) 1M x 64  | None         |
| 136MB                             | (1) 8M x 64  | (1) 8M x 64  | (1) 1M x 64  |
| 144MB                             | (1) 16M x 64 | (1) 1M x 64  | (1) 1M x 64  |
| 144MB                             | (1) 16M x 64 | (1) 2M x 64  | None         |
| 144MB                             | (1) 8M x 64  | (1) 8M x 64  | (1) 2M x 64  |
| 152MB                             | (1) 16M x 64 | (1) 2M x 64  | (1) 1M x 64  |
| 160MB                             | (1) 16M x 64 | (1) 2M x 64  | (1) 2M x 64  |
| 160MB                             | (1) 16M x 64 | (1) 4M x 64  | None         |
| 160MB                             | (1) 8M x 64  | (1) 8M x 64  | (1) 4M x 64  |
| 168MB                             | (1) 16M x 64 | (1) 4M x 64  | (1) 1M x 64  |
| 176MB                             | (1) 16M x 64 | (1) 4M x 64  | (1) 2M x 64  |
| 192MB                             | (1) 16M x 64 | (1) 4M x 64  | (1) 4M x 64  |
| 192MB                             | (1) 16M x 64 | (1) 8M x 64  | None         |
| 192MB                             | (1) 8M x 64  | (1) 8M x 64  | (1) 8M x 64  |
| 200MB                             | (1) 16M x 64 | (1) 8M x 64  | (1) 1M x 64  |
| 208MB                             | (1) 16M x 64 | (1) 8M x 64  | (1) 2M x 64  |
| 224MB                             | (1) 16M x 64 | (1) 8M x 64  | (1) 4M x 64  |
| 256MB                             | (1) 16M x 64 | (1) 8M x 64  | (1) 8M x 64  |
| 384MB                             | (1) 16M x 64 | (1) 16M x 64 | (1) 16M x 64 |
| Note: Board accepts SDRAM memory. |              |              |              |

## CACHE CONFIGURATION

Note: 512KB cache is located on the Pentium II CPU.

## VIDEO MEMORY CONFIGURATION

be upgraded to 6MB by installing a 4MB module in CN11. If board has a Diamond controller, the onboard memo

## CPU SPEED SELECTION

| CPU speed | Clock speed | Multiplier | SW1/7 | SW1/8 | SW1/9 | SW1/10 |
|-----------|-------------|------------|-------|-------|-------|--------|
| 133MHz    | 66MHz       | 2x         | On    | On    | On    | On     |
| 166MHz    | 66MHz       | 2.5x       | On    | On    | Off   | On     |
| 200MHz    | 66MHz       | 3x         | Off   | On    | On    | On     |
| 233MHz    | 66MHz       | 3.5x       | Off   | On    | Off   | On     |
| 266MHz    | 66MHz       | 4x         | On    | Off   | On    | On     |
| 300MHz    | 66MHz       | 4.5x       | On    | Off   | Off   | On     |
| 333MHz    | 66MHz       | 5x         | Off   | Off   | On    | On     |
| 366MHz    | 66MHz       | 5.5x       | Off   | Off   | Off   | Off    |
| 400MHz    | 66MHz       | 6x         | On    | On    | On    | Off    |
| 433MHz    | 66MHz       | 6.5x       | On    | On    | Off   | Off    |
| 466MHz    | 66MHz       | 7x         | Off   | On    | On    | Off    |
| 500MHz    | 66MHz       | 7.5x       | Off   | On    | Off   | Off    |
| 533MHz    | 66MHz       | 8x         | On    | Off   | On    | Off    |