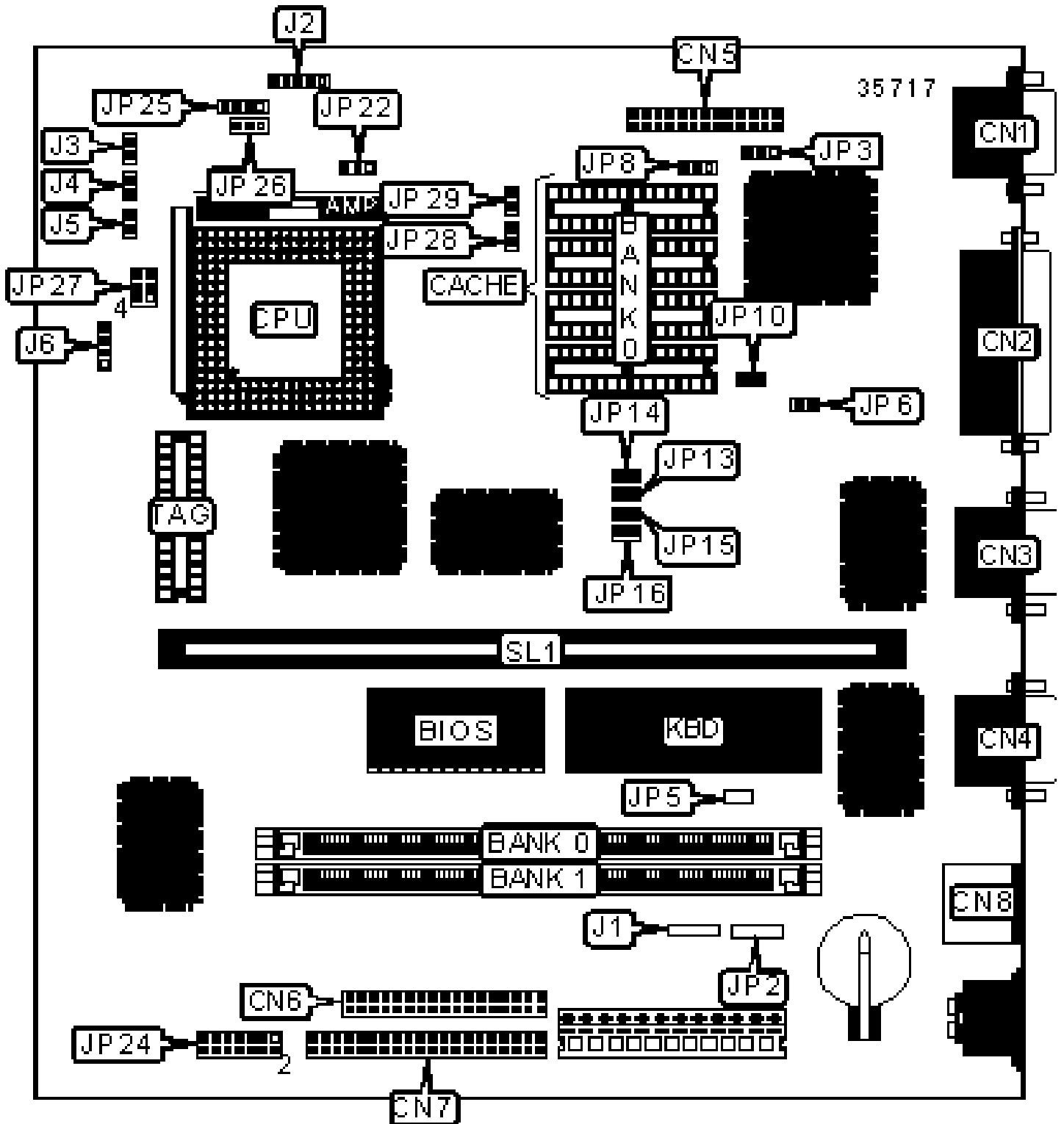


DATAEXPERT CORPORATION

AIO4044

Configuration



CONNECTIONS

Purpose	Location	Purpose	Location
VGA port	CN1	PS/2 mouse port	CN8
Parallel port	CN2	Power LED & keylock	J2
Serial port 2	CN3	Reset switch	J3
Serial port 1	CN4	Turbo LED	J4
VGA feature connector	CN5	Turbo switch	J5
Floppy drive interface	CN6	Speaker	J6
IDE interface	CN7	Riser slot	SL1

USER CONFIGURABLE SETTINGS

Function	Label	Position
» Factory configured - do not alter	J1	Unidentified
» Factory configured - do not alter	JP2	Unidentified
» Factory configured - do not alter	JP5	Unidentified
» VGA output select interlaced	JP6	Closed
VGA output select non interlaced	JP6	Open
» CPU clock speed select <33MHz	JP10	Open
CPU clock speed select >33MHz	JP10	Closed
» IDE interface enabled	JP24/pins 5 & 6	Open
IDE interface disabled	JP24/pins 5 & 6	Closed
» IDE select primary	JP24/pins 7 & 8	Open
IDE select secondary	JP24/pins 7 & 8	Closed
» IDE read prefetch disabled	JP24/pins 9 & 10	Closed
IDE read prefetch enabled	JP24/pins 9 & 10	Open

SIMM CONFIGURATION

Size	Bank 0	Bank 1
2MB	(1) 512K x 36	None
4MB	(1) 1M x 36	None
4MB	(1) 512K x 36	(1) 512K x 36
6MB	(1) 1M x 36	(1) 512K x 36
8MB	(1) 2M x 36	None
8MB	(1) 1M x 36	(1) 1M x 36
10MB	(1) 2M x 36	(1) 512K x 36
12MB	(1) 2M x 36	(1) 1M x 36
16MB	(1) 4M x 36	None

SIMM CONFIGURATION (CON'T)

Size	Bank 0	Bank 1
16MB	(1) 2M x 36	(1) 2M x 36
18MB	(1) 4M x 36	(1) 512K x 36
20MB	(1) 4M x 36	(1) 1M x 36
24MB	(1) 4M x 36	(1) 2M x 36
32MB	(1) 8M x 36	None
36MB	(1) 8M x 36	(1) 1M x 36
40MB	(1) 8M x 36	(1) 2M x 36
48MB	(1) 8M x 36	(1) 4M x 36
64MB	(1) 8M x 36	(1) 8M x 36

CACHE CONFIGURATION

Size	Bank 0	TAG
------	--------	-----

128KB	(4) 32K x 8	(1) 8K x 8
512KB	(4) 128K x 8	(1) 32K x 8

CACHE JUMPER CONFIGURATION

Size	JP28	JP29
128KB	Open	Open
512KB	Closed	Closed

VIDEO MEMORY CONFIGURATION

Note: The size and location of the video memory is unidentified.

CPU SPEED SELECTION

Speed	JP13	JP14	JP15	JP16
25MHz	Closed	Closed	Closed	Open
33MHz	Closed	Closed	Open	Open
40MHz	Open	Closed	Open	Open
50iMHz	Closed	Closed	Closed	Open
50MHz	Closed	Open	Open	Open
66iMHz	Closed	Closed	Open	Open
75iMHz	Closed	Closed	Closed	Open
100iMHz	Closed	Closed	Open	Open

CPU TYPE SELECTION

Type	JP25	JP26
CX486S	Pins 2 & 3 closed	Open
80486SX	Pins 2 & 3 closed	Open

80487SX	Pins 1 & 2, 3 & 4 closed	Pins 2 & 3 closed
80486DX	Pins 1 & 2, 3 & 4 closed	Pins 1 & 2 closed
80486DX4	Pins 1 & 2, 3 & 4 closed	Pins 1 & 2 closed
P24T	Pins 1 & 2, 3 & 4 closed	Pins 1 & 2 closed

CPU MULTIPLIER SELECTION	
Multiplier	JP22
2x	Pins 1 & 2 closed
2.5x	Pins 2 & 3 closed
3x	Open

CPU VOLTAGE SELECTION	
Voltage	JP27
3.3v	Pins 2 & 3, 5 & 6 closed
5v	Pins 1 & 2, 4 & 5 closed

VGA SELECTION		
Setting	JP3	JP8
» Enabled	Pins 1 & 2 closed	Pins 1 & 2 closed
Disabled	Pins 2 & 3 closed	Pins 2 & 3 closed

IDE MODE SELECTION		
Mode	JP24/pins 1 & 2	JP24/pins 3 & 4
» 0	Closed	Closed
1	Open	Closed
2	Closed	Open

	3	Open	Open
--	---	------	------

IDE FREQUENCY SELECTION			
Frequency		JP24/pins 11 & 12	JP24/pins 13 & 14
	25MHz	Open	Open
»	33MHz	Closed	Open
	40MHz	Open	Closed
	50MHz	Closed	Closed