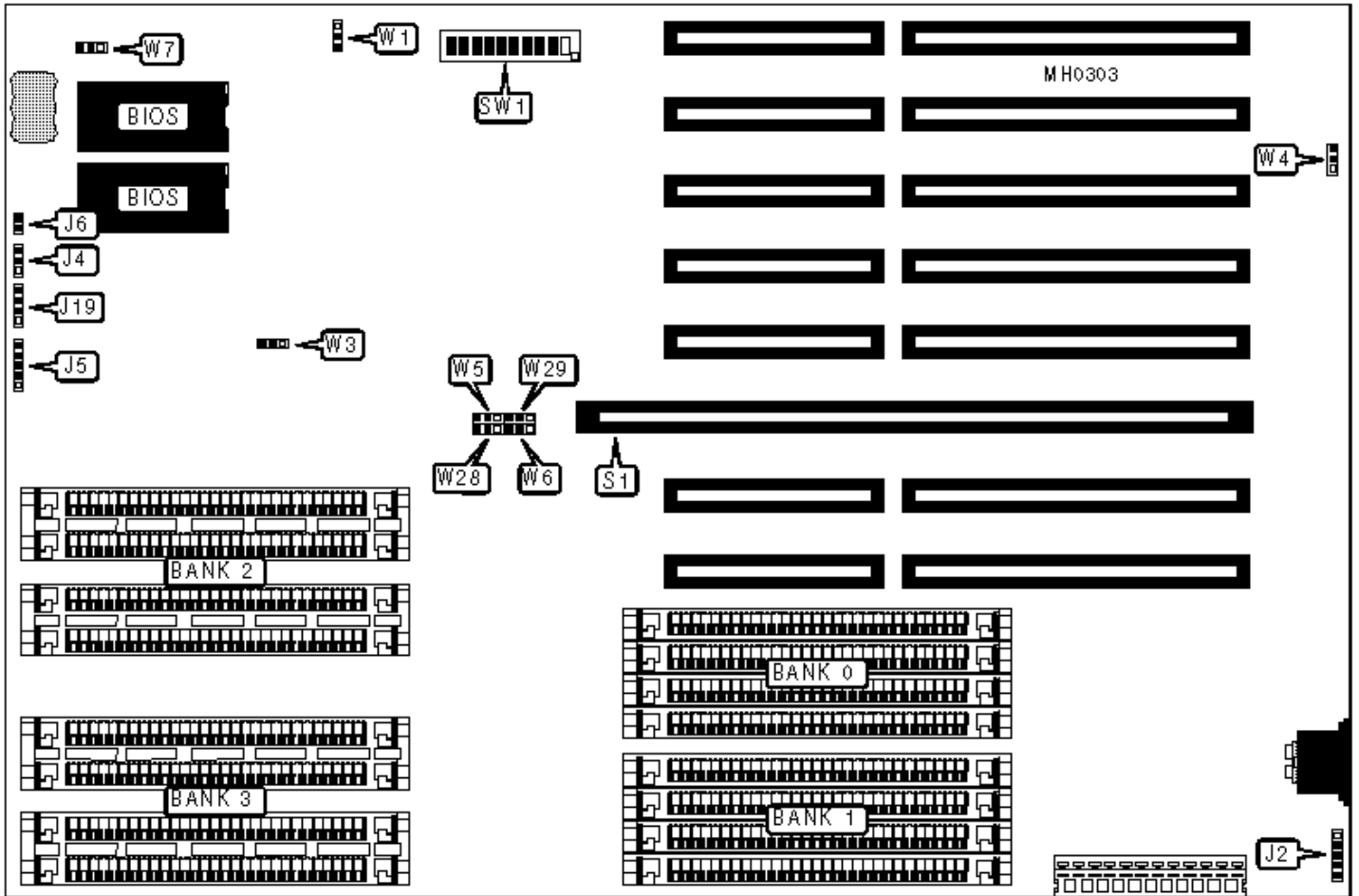


CLUB AMERICAN TECHNOLOGIES, INC.

FALCON 400 SERIES

Configuration



## CONNECTIONS

Purpose	Location	Purpose	Location
External battery	J2	Reset switch	J6
Turbo LED	J4	Speaker	J19
Power LED & keylock	J5	CPU/NPU expansion card	S1

## USER CONFIGURABLE SETTINGS

Function	Jumper/Switch	Position
» Factory configured - do not alter	W1	pins 1 & 2 closed
» CPU speed select switchable from keyboard	W3	pins 1 & 2 closed
CPU speed select forced high	W3	Open
CPU speed select forced low	W3	pins 2 & 3 closed
» Monitor type select color	W4	pins 2 & 3 closed
Monitor type select monochrome	W4	pins 1 & 2 closed
» Factory configured - do not alter	W7	pins 1 & 2 closed
» Factory configured - do not alter	SW1/1	On
» Factory configured - do not alter	SW1/2	Off
» Factory configured - do not alter	SW1/3	On
» Shadow video BIOS enabled	SW1/4	On
Shadow video BIOS disabled	SW1/4	Off
» Factory configured - do not alter	SW1/5	On
» Shadow system BIOS enabled	SW1/6	On
Shadow system BIOS disabled	SW1/6	Off

## DRAM CONFIGURATION

Size	Bank 0	Bank 1	Bank 2	Bank 3
------	--------	--------	--------	--------

1MB	(4) 256K x 9	NONE	NONE	NONE
2MB	(4) 256K x 9	(4) 256K x 9	NONE	NONE
4MB	(4) 1M x 9	NONE	NONE	NONE
6MB	(4) 256K x 9	(4) 256K x 9	(4) 1M x 9	NONE
8MB	(4) 1M x 9	(4) 1M x 9	NONE	NONE
10MB	(4) 256K x 9	(4) 256K x 9	(4) 1M x 9	(4) 1M x 9
12MB	(4) 1M x 9	(4) 1M x 9	(4) 1M x 9	NONE
16MB	(4) 1M x 9	(4) 1M x 9	(4) 1M x 9	(4) 1M x 9
16MB	(4) 4M x 9	NONE	NONE	NONE
24MB	(4) 1M x 9	(4) 1M x 9	(4) 4M x 9	NONE
32MB	(4) 4M x 9	(4) 4M x 9	NONE	NONE
40MB	(4) 4M x 9	(4) 4M x 9	(4) 1M x 9	(4) 1M x 9
48MB	(4) 4M x 9	(4) 4M x 9	(4) 4M x 9	NONE
64MB	(4) 4M x 9	(4) 4M x 9	(4) 4M x 9	(4) 4M x 9

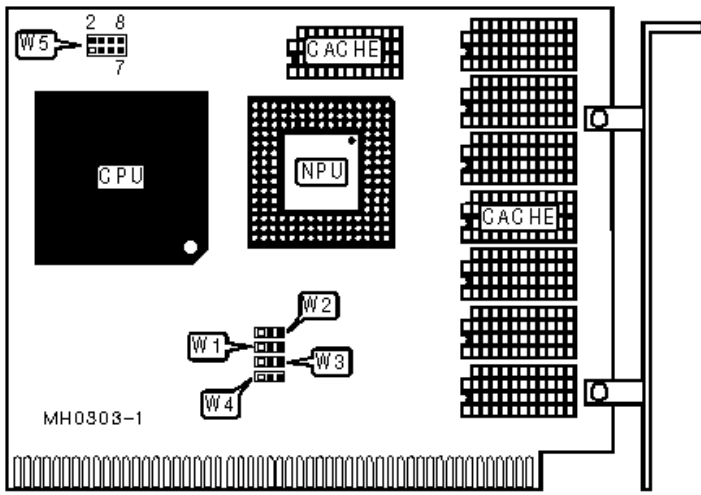
### DRAM JUMPER CONFIGURATION

Size	W5	W6	W28	W29
1MB	pins 2 & 3 closed	pins 2 & 3 closed	pins 1 & 2 closed	pins 2 & 3 closed
2MB	pins 2 & 3 closed	pins 2 & 3 closed	pins 1 & 2 closed	pins 2 & 3 closed
4MB	pins 1 & 2 closed	pins 2 & 3 closed	pins 1 & 2 closed	pins 2 & 3 closed
6MB	pins 2 & 3 closed	pins 2 & 3 closed	pins 1 & 2 closed	pins 2 & 3 closed
8MB	pins 1 & 2 closed	pins 2 & 3 closed	pins 1 & 2 closed	pins 2 & 3 closed
10MB	pins 2 & 3 closed	pins 2 & 3 closed	pins 1 & 2 closed	pins 2 & 3 closed
12MB	pins 1 & 2 closed	pins 2 & 3 closed	pins 1 & 2 closed	pins 2 & 3 closed
16MB	pins 1 & 2 closed	pins 2 & 3 closed	pins 1 & 2 closed	pins 2 & 3 closed
16MB	pins 1 & 2 closed	pins 1 & 2 closed	pins 1 & 2 closed	pins 1 & 2 closed

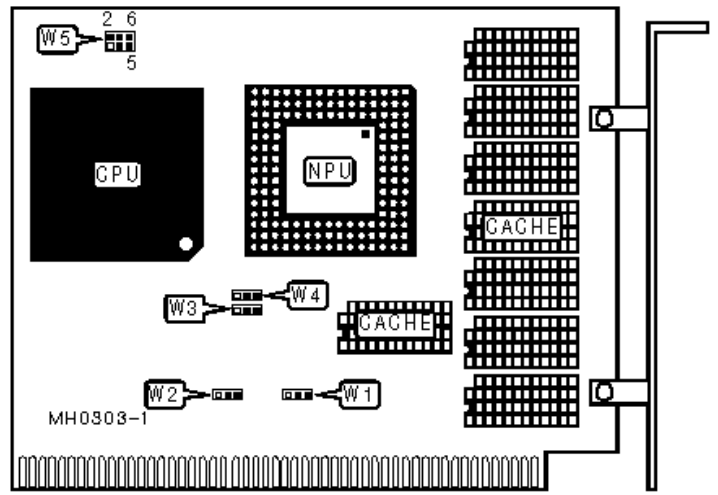
24MB	pins 1 & 2 closed	pins 2 & 3 closed	pins 1 & 2 closed	pins 1 & 2 closed
32MB	pins 1 & 2 closed	pins 1 & 2 closed	pins 1 & 2 closed	pins 1 & 2 closed
40MB	pins 1 & 2 closed	pins 2 & 3 closed	pins 1 & 2 closed	pins 1 & 2 closed
48MB	pins 1 & 2 closed	pins 1 & 2 closed	pins 1 & 2 closed	pins 1 & 2 closed
64MB	pins 1 & 2 closed	pins 1 & 2 closed	pins 1 & 2 closed	pins 1 & 2 closed

### DRAM SWITCH CONFIGURATION

Size	SW1/7	SW1/8	SW1/9	SW1/10
1MB	On	On	On	On
2MB	On	Off	On	On
4MB	On	On	On	Off
6MB	Off	On	On	On
8MB	On	Off	On	Off
10MB	Off	Off	On	On
12MB	Off	On	On	Off
16MB	Off	Off	On	Off
16MB	On	On	Off	Off
24MB	Off	On	Off	On
32MB	On	Off	Off	Off
40MB	Off	Off	Off	On
48MB	Off	On	Off	Off
64MB	Off	Off	Off	Off



486 ADSA



486 SX ADSA

### CACHE CONFIGURATION

Size	Bank 0
64KB	(8) 16K x 4
256KB	(8) 64K x 4

### CACHE CONFIGURATION

Size	W1	W2	W5
64KB	pins 2 & 3 closed	pins 2 & 3 closed	pins 3 & 4, 5 & 6 open
256KB	pins 1 & 2 closed	pins 1 & 2 closed	pins 3 & 4 closed, 5 & 6 closed

### BURST MODE CONFIGURATION

Burst mode	W3	W4	W5
Enabled	pins 2 & 3 closed	pins 2 & 3 closed	pins 1 & 2 closed
Disabled	pins 1 & 2 closed	pins 1 & 2 closed	pins 1 & 2 open