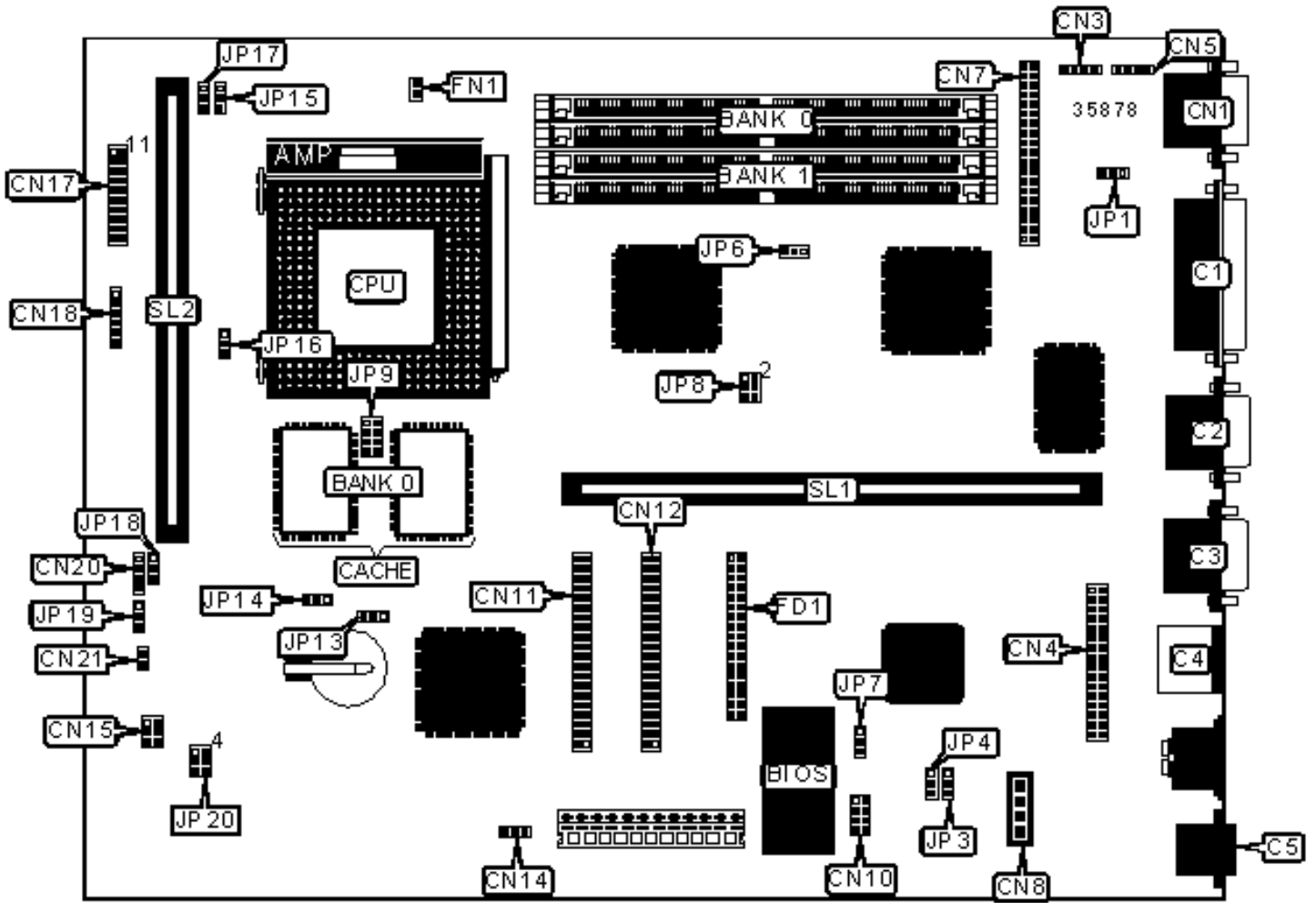


ACER, INC.

V56LA

Configuration



CONNECTIONS

Purpose	Location	Purpose	Location
Parallel port	C1	IDE interface 2	CN12
Serial port 2	C2	Software shutdown	CN14
Serial port 1	C3	Active/LED connector	CN15
PS/2 mouse port	C4	Power LED	CN17/pins 3 - 5
Ethernet 10BaseT connector	C5	Green PC connector	CN17/pins 19 & 20
VGA port	CN1	IR connector	CN18
Modem connector	CN3	Floppy/IDE interface LED	CN20
Audio connector	CN4	Power switch connector	CN21
AMC connector	CN5	Floppy drive interface	FD1
ATI media connector	CN7	Chassis fan power	FN1
Audio in – CD-ROM	CN8	Riser slot	SL1
Wavetable connector	CN10	Cache slot	SL2
IDE interface 1	CN11		

USER CONFIGURABLE SETTINGS

Function	Label	Position
» On board video enabled	JP1	Pins 2 & 3 closed
On board video disabled	JP1	Pins 1 & 2 closed
» BIOS type select Acer	JP3	Pins 1 & 2 closed
BIOS type select OEM	JP3	Pins 2 & 3 closed
» Password disabled	JP4	Pins 2 & 3 closed
Password enabled	JP4	Pins 1 & 2 closed
» BIOS type select Block ROM	JP7	Pins 1 & 2 closed
BIOS type select Flash ROM	JP7	Pins 2 & 3 closed

»	Factory configured - do not alter	JP16	Unidentified
»	LED select IDE LED only	JP18	Pins 2 & 3 closed
	LED select IDE & floppy	JP18	Pins 1 & 2 closed
»	External switch select green PC	JP19	Pins 1 & 2 closed
	External switch select reset	JP19	Pins 2 & 3 closed
»	Software shutdown select software shutdown	JP20	Pins 1 & 2, 4 & 5 closed
	Software shutdown select appears off	JP20	Pins 2 & 3, 5 & 6 closed

SIMM CONFIGURATION

Size	Bank 0	Bank 1
8MB	(2) 1M x 36	None
16MB	(2) 2M x 36	None
16MB	(2) 1M x 36	(2) 1M x 36
24MB	(2) 2M x 36	(2) 1M x 36
32MB	(2) 4M x 36	None
32MB	(2) 2M x 36	(2) 2M x 36
40MB	(2) 4M x 36	(2) 1M x 36
48MB	(2) 4M x 36	(2) 2M x 36
64MB	(2) 8M x 36	None
64MB	(2) 4M x 36	(2) 4M x 36
72MB	(2) 8M x 36	(2) 1M x 36
80MB	(2) 8M x 36	(2) 2M x 36
96MB	(2) 8M x 36	(2) 4M x 36
128MB	(2) 8M x 36	(2) 8M x 36

CACHE CONFIGURATION

CACHE CONFIGURATION

Size	Bank 0	SL2
256KB	(2) 32K x 32	Not installed
512KB	(2) 32K x 32	256KB module installed

CACHE JUMPER CONFIGURATION

Size	JP6
256KB	Pins 1 & 2 closed
512KB	Pins 2 & 3 closed

VIDEO MEMORY CONFIGURATION

Note: The location of the video memory is unidentified.

CPU SPEED SELECTION (CX 6X86)

CPU speed	Clock speed	Multiplier	JP8	JP9	JP13	JP14	JP15	JP17
120MHz	50MHz	2x	1 & 4	Closed	1 & 2	1 & 2	1 & 2	2 & 3
150MHz	60MHz	2x	2 & 5	Closed	1 & 2	1 & 2	1 & 2	2 & 3
166MHz	66MHz	2x	3 & 6	Closed	1 & 2	1 & 2	1 & 2	2 & 3

Note: Pins designated should be in the closed position.

CPU SPEED SELECTION (IBM 6X86)

CPU speed	Clock speed	Multiplier	JP8	JP9	JP13	JP14	JP15	JP17
120MHz	50MHz	2x	1 & 4	Closed	1 & 2	1 & 2	1 & 2	2 & 3
150MHz	60MHz	2x	2 & 5	Closed	1 & 2	1 & 2	1 & 2	2 & 3
166MHz	66MHz	2x	3 & 6	Closed	1 & 2	1 & 2	1 & 2	2 & 3

Note: Pins designated should be in the closed position.

CPU SPEED SELECTION (CX 6X86L)

CPU speed	Clock speed	Multiplier	JP8	JP9	JP13	JP14	JP15	JP17
120MHz	50MHz	2x	1 & 4	Open	1 & 2	1 & 2	1 & 2	2 & 3
150MHz	60MHz	2x	2 & 5	Open	1 & 2	1 & 2	1 & 2	2 & 3
166MHz	66MHz	2x	3 & 6	Open	1 & 2	1 & 2	1 & 2	2 & 3

Note: Pins designated should be in the closed position.

CPU SPEED SELECTION (IBM 6X86L)

CPU speed	Clock speed	Multiplier	JP8	JP9	JP13	JP14	JP15	JP17
120MHz	50MHz	2x	1 & 4	Open	1 & 2	1 & 2	1 & 2	2 & 3
150MHz	60MHz	2x	2 & 5	Open	1 & 2	1 & 2	1 & 2	2 & 3
166MHz	66MHz	2x	3 & 6	Open	1 & 2	1 & 2	1 & 2	2 & 3

Note: Pins designated should be in the closed position.

CPU SPEED SELECTION (AM K5)

CPU speed	Clock speed	Multiplier	JP8	JP9	JP13	JP14	JP15	JP17
120MHz	60MHz	2x	2 & 5	Closed	1 & 2	1 & 2	1 & 2	1 & 2
133MHz	66MHz	2x	3 & 6	Closed	1 & 2	1 & 2	1 & 2	1 & 2
150MHz	60MHz	2.5x	2 & 5	Closed	1 & 2	1 & 2	1 & 2	2 & 3
166MHz	66MHz	2.5x	3 & 6	Closed	1 & 2	1 & 2	1 & 2	2 & 3

Note: Pins designated should be in the closed position.

CPU SPEED SELECTION (INTEL)

CPU speed	Clock speed	Multiplier	JP8	JP9	JP13	JP14	JP15	JP17
100MHz	66MHz	1.5x	3 & 6	Closed	1 & 2	1 & 2	1 & 2	1 & 2
120MHz	60MHz	2x	2 & 5	Closed	1 & 2	1 & 2	1 & 2	2 & 3

133MHz	66MHz	2x	3 & 6	Closed	1 & 2	1 & 2	1 & 2	2 & 3
150MHz	60MHz	2.5x	2 & 5	Closed	1 & 2	1 & 2	2 & 3	2 & 3
166MHz	66MHz	2.5x	3 & 6	Closed	1 & 2	1 & 2	2 & 3	2 & 3
200MHz	66MHz	3x	3 & 6	Closed	1 & 2	1 & 2	2 & 3	1 & 2

Note: Pins designated should be in the closed position.

CPU SPEED SELECTION (INTEL MMX)

CPU speed	Clock speed	Multiplier	JP8	JP9	JP13	JP14	JP15	JP17
166MHz	66MHz	2.5x	3 & 6	Open	1 & 2	1 & 2	2 & 3	2 & 3
200MHz	66MHz	3x	3 & 6	Open	1 & 2	1 & 2	2 & 3	1 & 2

Note: Pins designated should be in the closed position.