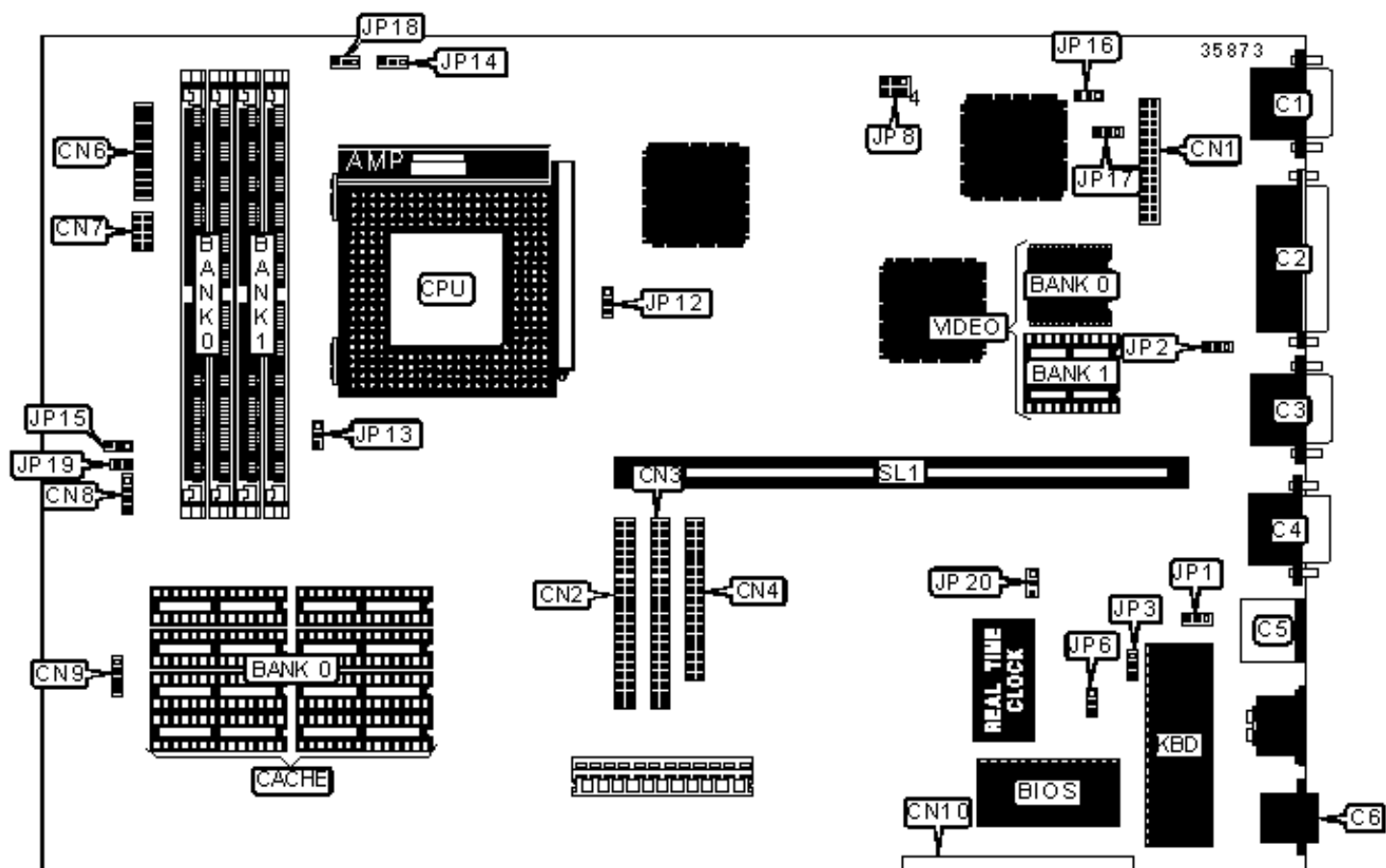


ACER, INC.

V12LC

Configuration



CONNECTIONS

Purpose	Location	Purpose	Location
VGA port	C1	Power LED & keylock	CN6/pins 1 - 5
Parallel port	C2	Speaker	CN6/pins 7 - 10
Serial port 2	C3	Turbo LED	CN6/pins 12 & 13
Serial port 1	C4	Turbo switch	CN6/pins 15 - 17
PS/2 mouse port	C5	Reset switch	CN6/pins 19 & 20
Ethernet 10BaseT connector	C6	Power LED & keylock	CN7/pins 1 - 4
VGA feature connector	CN1	Reset switch	CN7/pins 6 & 7
IDE interface 1	CN2	IDE interface LED	CN8
IDE interface 2	CN3	Network/multimedia interface	CN10
Floppy drive interface	CN4	Riser slot	SL1

USER CONFIGURABLE SETTINGS

Function		Label	Position
»	Factory configured - do not alter	CN9	Unidentified
»	BIOS type select Acer	JP1	Pins 1 & 2 closed
	BIOS type select OEM	JP1	Pins 2 & 3 closed
»	Password disabled	JP2	Pins 2 & 3 closed
	Password enabled	JP2	Pins 1 & 2 closed
»	BIOS type select flash	JP3	Pins 2 & 3 closed
	BIOS type select EPROM	JP3	Pins 1 & 2 closed
»	On board I/O enabled	JP6	Pins 2 & 3 closed
	On board I/O disabled	JP6	Pins 1 & 2 closed
»	Reset function	JP15	Pins 2 & 3 closed
	Suspend mode function	JP15	Pins 1 & 2 closed

»	Detects hard drive access only	JP19	Open
	Detects hard drives & floppy drive accesses	JP19	Closed
»	Flash BIOS write protect disabled	JP20	Pins 2 & 3 closed
	Flash BIOS write protect enabled	JP20	Pins 1 & 2 closed

SIMM CONFIGURATION		
Size	Bank 0	Bank 1
8MB	(2) 1M x 36	None
16MB	(2) 2M x 36	None
16MB	(2) 1M x 36	(2) 1M x 36
24MB	(2) 2M x 36	(2) 1M x 36

SIMM CONFIGURATION (CON'T)		
Size	Bank 0	Bank 1
32MB	(2) 4M x 36	None
32MB	(2) 2M x 36	(2) 2M x 36
40MB	(2) 4M x 36	(2) 1M x 36
48MB	(2) 4M x 36	(2) 2M x 36
64MB	(2) 8M x 36	None
64MB	(2) 4M x 36	(2) 4M x 36
72MB	(2) 8M x 36	(2) 1M x 36
80MB	(2) 8M x 36	(2) 2M x 36
96MB	(2) 8M x 36	(2) 4M x 36
128MB	(2) 8M x 36	(2) 8M x 36

CACHE CONFIGURATION

Size	Bank 0
256KB	(8) 32K x 8

VIDEO MEMORY CONFIGURATION		
Size	Bank 0	Bank 1
1MB	(2) 256K x 16	None
2MB	(2) 256K x 16	(2) 256K x 16

CPU SPEED SELECTION	
Speed	JP8
75MHz	Pins 1 & 4 closed
90MHz	Pins 2 & 5 closed
100MHz	Pins 3 & 6 closed
120MHz	Pins 2 & 5 closed
133MHz	Pins 3 & 6 closed
150MHz	Pins 2 & 5 closed

CPU TYPE SELECTION	
Type	JP12
AM K5	Pins 1 & 2 closed
CX M1	Pins 2 & 3 closed
Intel	Pins 1 & 2 closed

CPU MULTIPLIER SELECTION (CX M1)		
Multiplier	JP14	JP18
1.5x, 2x, 3x	Pins 1 & 2 closed	Pins 1 & 2 closed

1x	Pins 2 & 3 closed	Pins 1 & 2 closed
1.5x, 2x, 3x	Pins 1 & 2 closed	Pins 2 & 3 closed
1x	Pins 2 & 3 closed	Pins 2 & 3 closed

CPU MULTIPLIER SELECTION (AM K5)		
Multiplier	JP14	JP18
1.5x, 2x, 3x	Pins 1 & 2 closed	Pins 1 & 2 closed
1x	Pins 2 & 3 closed	Pins 1 & 2 closed
1.5x, 2x, 3x	Pins 1 & 2 closed	Pins 2 & 3 closed
1x	Pins 2 & 3 closed	Pins 2 & 3 closed

CPU MULTIPLIER SELECTION (INTEL)		
Multiplier	JP14	JP18
1.5x	Pins 1 & 2 closed	Pins 1 & 2 closed
2x	Pins 2 & 3 closed	Pins 1 & 2 closed
3x	Pins 1 & 2 closed	Pins 2 & 3 closed
2.5x	Pins 2 & 3 closed	Pins 2 & 3 closed

CPU VOLTAGE SELECTION		
Voltage		JP13
»	3.3v	Pins 1 & 2 closed
	3.5v	Pins 2 & 3 closed

CN1 CONNECTOR SELECTION			
Setting		JP16	JP17
»	Feature connector	Pins 1 & 2 closed	Pins 1 & 2 closed

	I2C connector	Pins 2 & 3 closed	Pins 2 & 3 closed
--	---------------	-------------------	-------------------