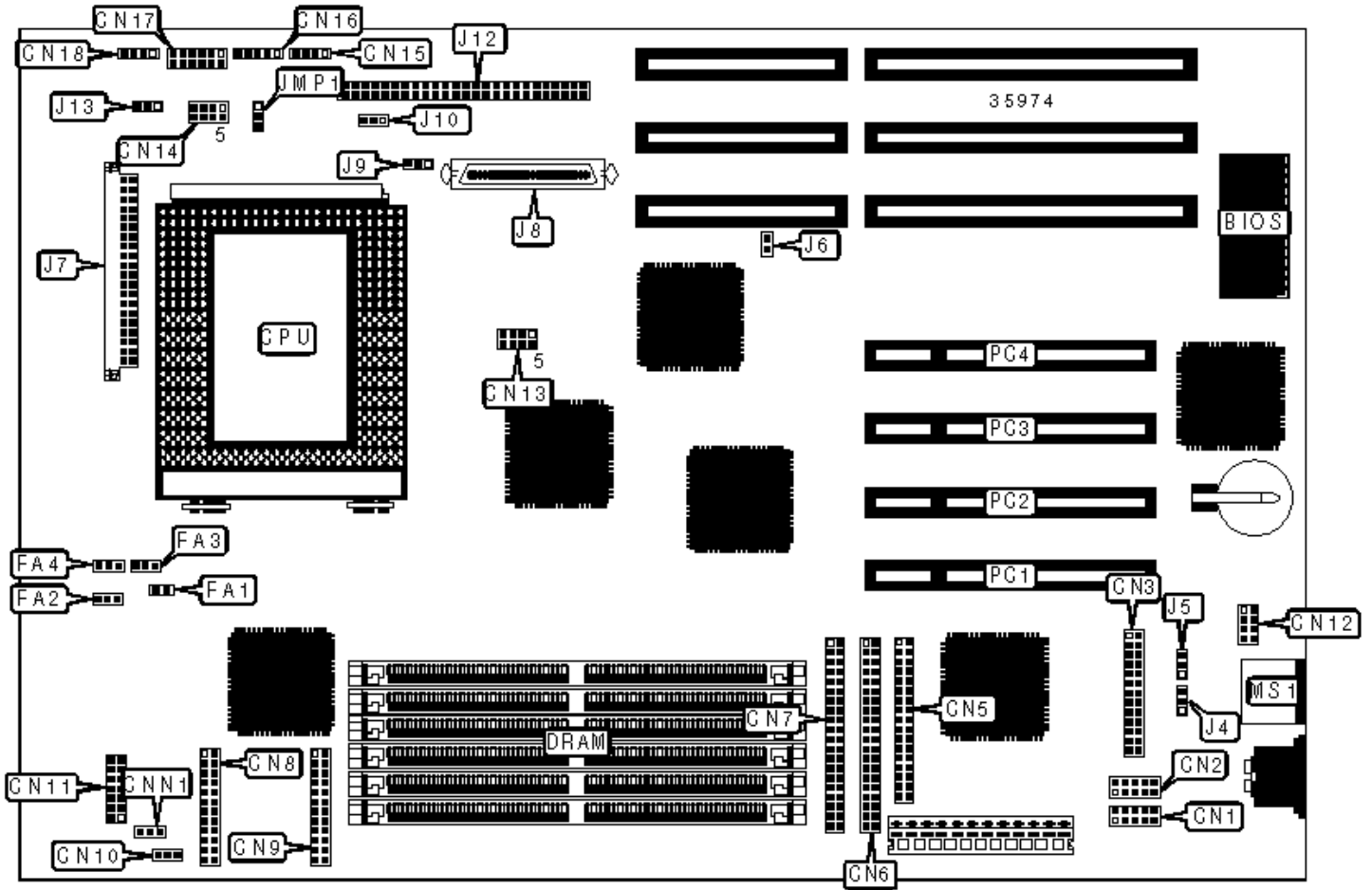


ACER, INC.

ACERALTOS 900 PRO (M11A), M11A

Configuration



CONNECTIONS

Purpose	Location	Purpose	Location
Serial port 1	CN1	Power LED & keylock	CN16
Serial port 2	CN2	Reset switch/RDM cable connector	CN17
Parallel port	CN3	IDE interface LED	CN18
Floppy drive interface	CN5	CPU fan power	FA1
IDE interface 1	CN6	VRM connector	J7
IDE interface 2	CN7	Wide SCSI interface	J8
RDM connector	CN8	SCSI interface	J12
RDM connector	CN9	PS/2 mouse port	MS1
Speaker	CN15	32-bit PCI slots	PC1 - PC4

USER CONFIGURABLE SETTINGS

Function	Label	Position
» Factory configured - do not alter	CN10	Unidentified
» Factory configured - do not alter	CN11	Unidentified
» Factory configured - do not alter	CN12	Unidentified
» Factory configured - do not alter	CNN1	Unidentified
» Factory configured - do not alter	FA2	Unidentified
» Factory configured - do not alter	FA3	Unidentified
» Factory configured - do not alter	FA4	Unidentified
» BIOS type select Acer	J4	Pins 1 & 2 closed
» BIOS type select OEM	J4	Pins 2 & 3 closed
» Password enabled	J5	Pins 1 & 2 closed
» Password disabled	J5	Pins 2 & 3 closed
» SCSI type select wide	J6	Closed

	SCSI type select narrow	J6	Open
»	Buzzer enabled	J13	Pins 1 & 2 closed
	External speaker enabled	J13	Pins 2 & 3 closed
»	Reset switch enabled	JMP1	Pins 1 & 2 closed
	Reset switch disabled, Green PC enabled	JMP1	Pins 2 & 3 closed

SIMM CONFIGURATION			
Size	Bank 0	Bank 1	Bank 2
8MB	(2) 1M x 36	None	None
16MB	(2) 1M x 36	(2) 1M x 36	None
16MB	(2) 2M x 36	None	None
24MB	(2) 2M x 36	(2) 1M x 36	None
24MB	(2) 1M x 36	(2) 1M x 36	(2) 1M x 36
32MB	(2) 4M x 36	None	None
32MB	(2) 2M x 36	(2) 2M x 36	None
40MB	(2) 4M x 36	(2) 1M x 36	None

SIMM CONFIGURATION (CON'T)			
Size	Bank 0	Bank 1	Bank 2
48MB	(2) 4M x 36	(2) 2M x 36	None
48MB	(2) 4M x 36	(2) 1M x 36	(2) 1M x 36
56MB	(2) 4M x 36	(2) 2M x 36	(2) 1M x 36
64MB	(2) 8M x 36	None	None
64MB	(2) 4M x 36	(2) 4M x 36	None
80MB	(2) 8M x 36	(2) 2M x 36	None
80MB	(2) 8M x 36	(2) 1M x 36	(2) 1M x 36

88MB	(2) 8M x 36	(2) 2M x 36	(2) 1M x 36
96MB	(2) 8M x 36	(2) 4M x 36	None
96MB	(2) 4M x 36	(2) 4M x 36	(2) 4M x 36
96MB	(2) 8M x 36	(2) 2M x 36	(2) 2M x 36
104MB	(2) 8M x 36	(2) 4M x 36	(2) 1M x 36
112MB	(2) 8M x 36	(2) 4M x 36	(2) 2M x 36
128MB	(2) 8M x 36	(2) 4M x 36	(2) 4M x 36
128MB	(2) 16M x 36	None	None
128MB	(2) 8M x 36	(2) 8M x 36	None
136MB	(2) 8M x 36	(2) 8M x 36	(2) 1M x 36
136MB	(2) 16M x 36	(2) 1M x 36	None
144MB	(2) 16M x 36	(2) 2M x 36	None
144MB	(2) 16M x 36	(2) 1M x 36	(2) 1M x 36
152MB	(2) 16M x 36	(2) 2M x 36	(2) 1M x 36
160MB	(2) 16M x 36	(2) 4M x 36	None
160MB	(2) 16M x 36	(2) 2M x 36	(2) 2M x 36
168MB	(2) 16M x 36	(2) 4M x 36	(2) 1M x 36
176MB	(2) 16M x 36	(2) 4M x 36	(2) 2M x 36
192MB	(2) 16M x 36	(2) 8M x 36	None
192MB	(2) 16M x 36	(2) 4M x 36	(2) 4M x 36
200MB	(2) 16M x 36	(2) 8M x 36	(2) 1M x 36
208MB	(2) 16M x 36	(2) 8M x 36	(2) 2M x 36
224MB	(2) 16M x 36	(2) 8M x 36	(2) 4M x 36
256MB	(2) 16M x 36	(2) 16M x 36	None
256MB	(2) 16M x 36	(2) 8M x 36	(2) 8M x 36
264MB	(2) 16M x 36	(2) 16M x 36	(2) 1M x 36

272MB	(2) 16M x 36	(2) 16M x 36	(2) 2M x 36
288MB	(2) 16M x 36	(2) 16M x 36	(2) 4M x 36
320MB	(2) 16M x 36	(2) 16M x 36	(2) 8M x 36
384MB	(2) 16M x 36	(2) 16M x 36	(2) 16M x 36
Note: Board accepts EDO memory.			

CACHE CONFIGURATION
Note: 256KB/512KB cache is located on the Pentium Pro CPU.

CPU SPEED SELECTION (PENTIUM 5 COLUMNS)							
CPU speed	Clock speed	Multiplier	CN13/ pins 1 & 5	CN5/ pins 2 & 6	CN6/ pins 3 & 7	CN7/ pins 4 & 8	J9
180MHz	60MHz	3x	Closed	Closed	Open	Closed	1 & 2
200MHz	66MHz	3x	Closed	Closed	Open	Closed	2 & 3
Note: Pins designated should be in the closed position.							

CPU VOLTAGE SELECTION				
Voltage	CN14/pins 1 & 5	CN14/pins 2 & 6	CN14/pins 3 & 7	CN14/pins 4 & 8
2.1v	Open	Open	Open	Closed
2.2v	Open	Open	Closed	Open
2.3v	Open	Open	Closed	Closed
2.4v	Open	Closed	Open	Open
2.5v	Open	Closed	Open	Closed
2.6v	Open	Closed	Closed	Open
2.7v	Open	Closed	Closed	Closed
2.8v	Closed	Open	Open	Open
2.9v	Closed	Open	Open	Closed

	3.0v	Closed	Open	Closed	Open
	3.1v	Closed	Open	Closed	Closed
	3.2v	Closed	Closed	Open	Open
»	3.3v	Closed	Closed	Open	Closed
	3.4v	Closed	Closed	Closed	Open
	3.5v	Closed	Closed	Closed	Closed

SCSI TERMINATION SELECTION

Setting		J10
	Termination disabled	Open
	Termination enabled	Pins 1 & 2 closed
»	Termination switchable through SCSI select utility	Pins 2 & 3 closed