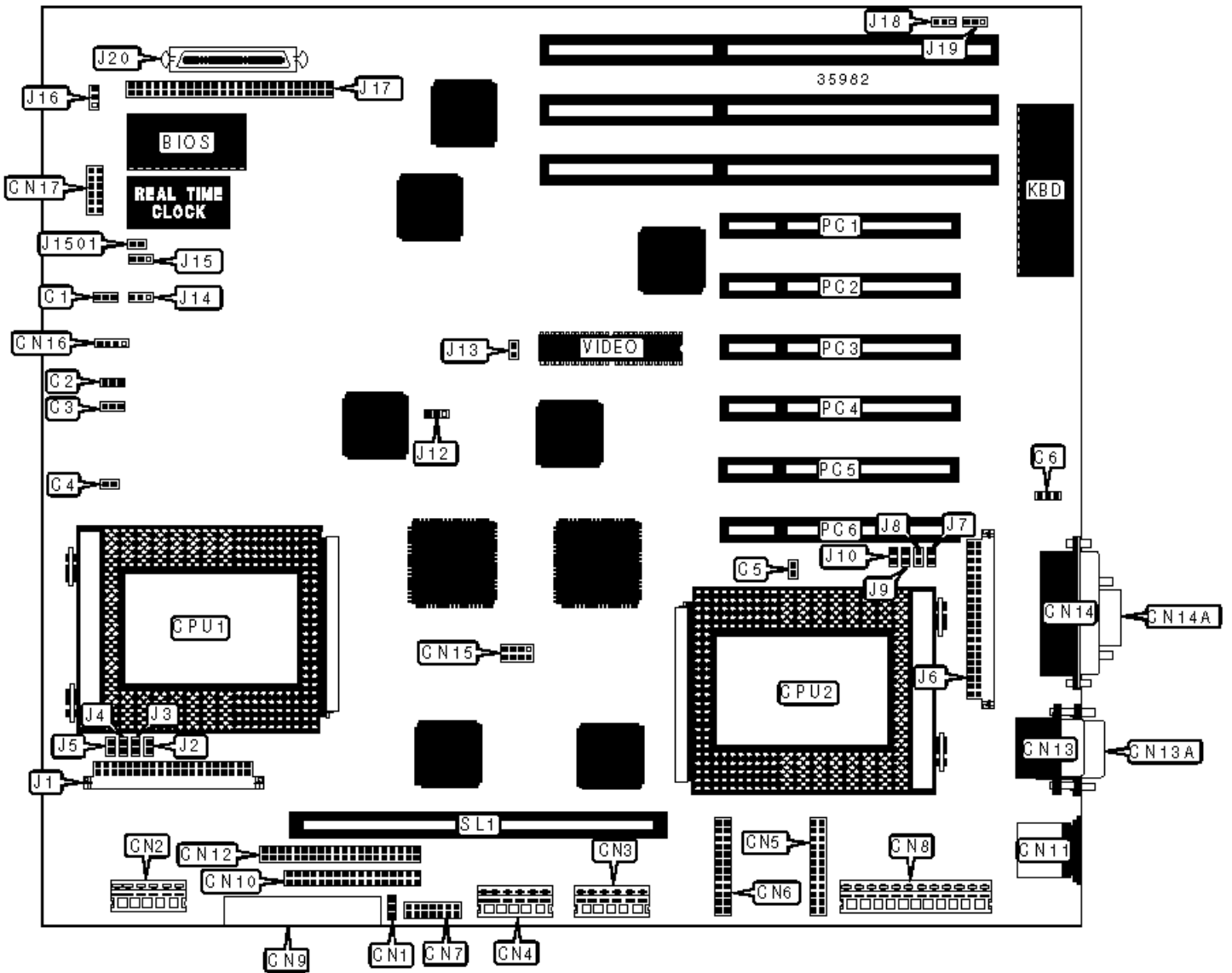


ACER, INC.

ACERALTOS 19000

Configuration



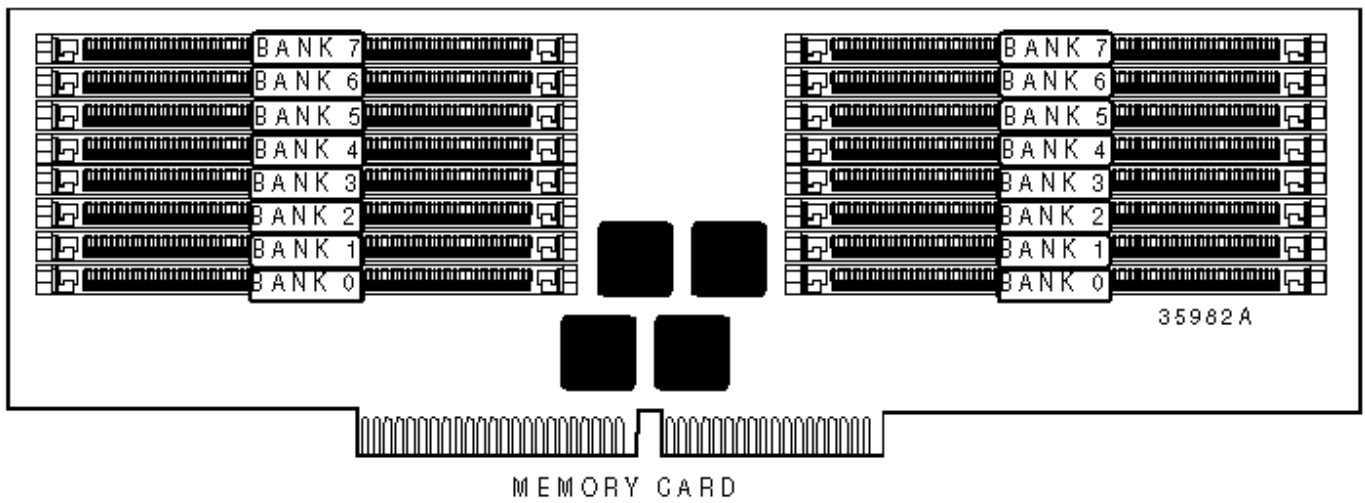
## CONNECTIONS

Purpose	Location	Purpose	Location
Chassis fan power	C1	Floppy drive interface	CN10
Chassis fan power	C2	PS/2 mouse port	CN11
Chassis fan power	C3	IDE interface	CN12
Chassis fan power	C4	Serial port	CN13
Chassis fan power	C5	Serial port	CN13A
Chassis fan power	C6	Parallel port	CN14
Power connector	CN1	VGA port	CN14A
Power connector	CN2	IDE interface LED	CN16
Power connector	CN3	Reset/RDM switch	CN17
Power connector	CN4	VRM connector 1	J1
RDM connector	CN5	VRM connector 2	J6
RDM connector	CN6	SCSI interface	J17
LED connector	CN7	Ultra Wide SCSI interface	J20
5v power	CN8	32-bit PCI slots	PC1 - PC6
Front panel connector	CN9	Memory card slot	SL1

## USER CONFIGURABLE SETTINGS

	Function	Label	Position
»	Factory configured - do not alter	CN15	Unidentified
»	Wide SCSI enabled	J13	Closed
»	Wide SCSI disabled	J13	Open
»	Factory configured - do not alter	J14	Pins 2 & 3 closed
»	Factory configured - do not alter	J15	Pins 2 & 3 closed
»	Termination enabled	J16	Pins 1 & 2 closed

	Termination switchable through SCSI select utility	J16	Pins 2 & 3 closed
»	Password disabled	J18	Pins 2 & 3 closed
	Password enabled	J18	Pins 1 & 2 closed
»	BIOS type select Acer	J19	Pins 1 & 2 closed
	BIOS type select OEM	J19	Pins 2 & 3 closed
»	Buzzer enabled	J1501	Closed
	Buzzer disabled	J1501	Open



### SIMM CONFIGURATION

Size	Bank 0	Bank 1	Bank 2	Bank 3
16MB	(2) 2M x 36	None	None	None
32MB	(2) 4M x 36	None	None	None
32MB	(2) 2M x 36	(2) 2M x 36	None	None
48MB	(2) 2M x 36	(2) 2M x 36	(2) 2M x 36	None
64MB	(2) 2M x 36	(2) 2M x 36	(2) 2M x 36	(2) 2M x 36
64MB	(2) 8M x 36	None	None	None
64MB	(2) 4M x 36	(2) 4M x 36	None	None
96MB	(2) 8M x 36	(2) 4M x 36	None	None
96MB	(2) 4M x 36	(2) 4M x 36	(2) 4M x 36	None

128MB	(2) 8M x 36	(2) 8M x 36	None	None
128MB	(2) 4M x 36	(2) 4M x 36	(2) 4M x 36	(2) 4M x 36
192MB	(2) 8M x 36	(2) 8M x 36	(2) 8M x 36	None
256MB	(2) 8M x 36	(2) 8M x 36	(2) 8M x 36	(2) 8M x 36

### SIMM CONFIGURATION (CON'T)

Size	Bank 4	Bank 5	Bank 6	Bank 7
16MB	(2) 2M x 36	None	None	None
32MB	(2) 4M x 36	None	None	None
32MB	(2) 2M x 36	(2) 2M x 36	None	None
48MB	(2) 2M x 36	(2) 2M x 36	(2) 2M x 36	None
64MB	(2) 2M x 36	(2) 2M x 36	(2) 2M x 36	(2) 2M x 36
64MB	(2) 8M x 36	None	None	None
64MB	(2) 4M x 36	(2) 4M x 36	None	None
96MB	(2) 8M x 36	(2) 4M x 36	None	None
96MB	(2) 4M x 36	(2) 4M x 36	(2) 4M x 36	None
128MB	(2) 8M x 36	(2) 8M x 36	None	None
128MB	(2) 4M x 36	(2) 4M x 36	(2) 4M x 36	(2) 4M x 36
192MB	(2) 8M x 36	(2) 8M x 36	(2) 8M x 36	None
256MB	(2) 8M x 36	(2) 8M x 36	(2) 8M x 36	(2) 8M x 36

Note: To install maximum memory of 512MB, insert 8M x 36 in all 8 banks.

### CACHE CONFIGURATION

Note: 256KB/512KB cache is located on the Pentium Pro CPU.

### VIDEO MEMORY CONFIGURATION

Note: The size of the video is unidentified.

### CPU SPEED SELECTION

CPU speed	Clock speed	Multiplier	J12
200MHz	66MHz	3x	Pins 2 & 3 closed

### CPU 1 VOLTAGE SELECTION

Voltage	J2	J3	J4	J5
3.3v	Closed	Open	Closed	Closed

### CPU 2 VOLTAGE SELECTION

Voltage	J7	J8	J9	J10
3.3v	Closed	Open	Closed	Closed

### CPU VOLTAGE SELECTION

Voltage	VID0	VID1	VID2	VID3
No CPU	Open	Open	Open	Open
2.1v	Closed	Open	Open	Open
2.2v	Open	Open	Closed	Open
2.3v	Closed	Open	Closed	Open
2.4v	Open	Closed	Open	Open
2.5v	Closed	Closed	Open	Open
2.6v	Open	Closed	Closed	Open
2.7v	Closed	Closed	Closed	Open
2.8v	Open	Open	Open	Closed
2.9v	Closed	Open	Open	Closed

3.0v	Open	Open	Closed	Closed
3.1v	Closed	Open	Closed	Closed
3.2v	Open	Closed	Open	Closed
3.3v	Closed	Closed	Open	Closed
3.4v	Open	Closed	Closed	Closed
3.5v	Closed	Closed	Closed	Closed

Note: The location of the above jumpers is unidentified.