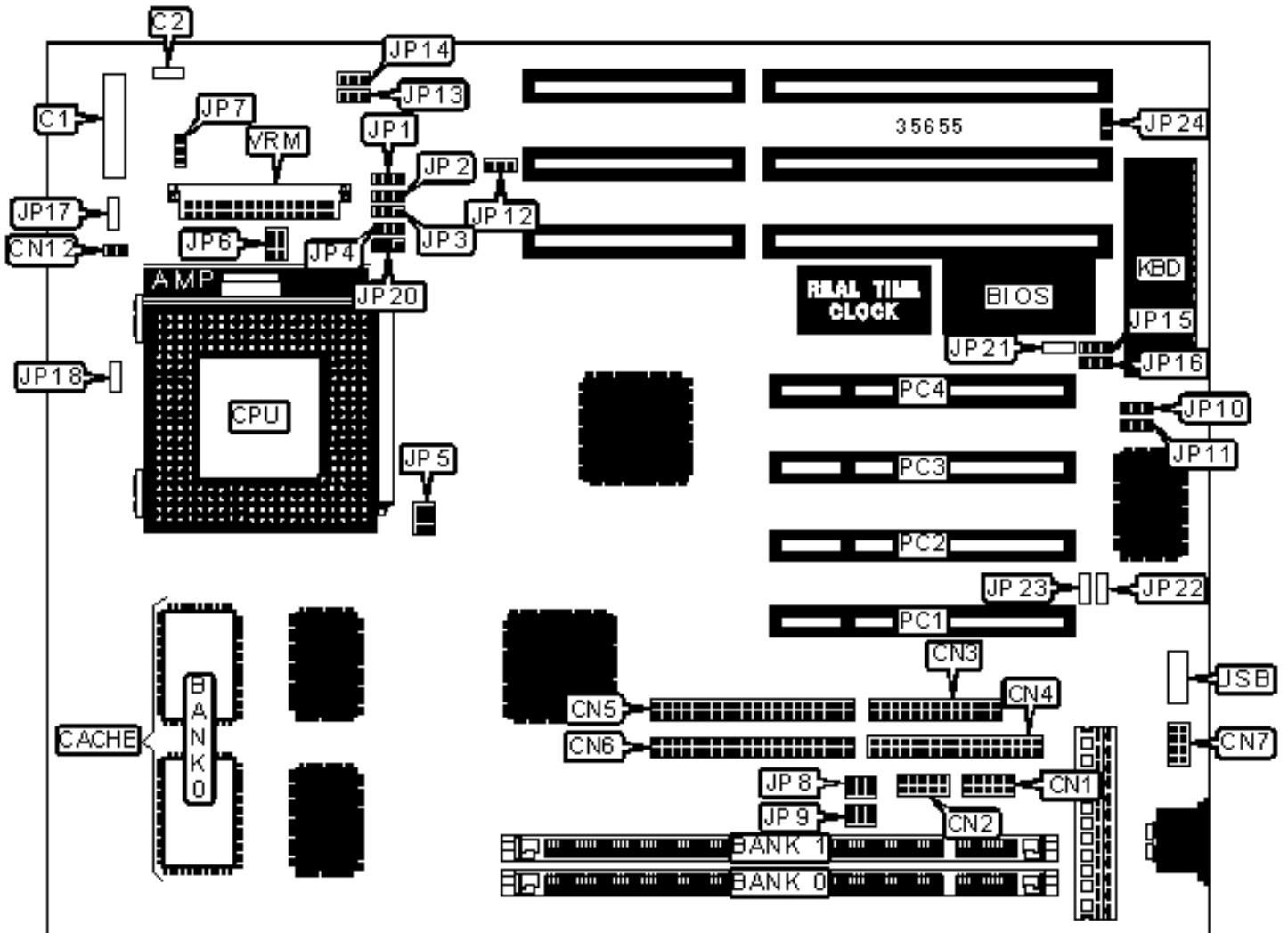


ACER, INC.

AP5V

Configuration



CONNECTIONS

Purpose	Location	Purpose	Location
Front panel connector	C1	IDE interface 1	CN6
IDE interface LED	C2	PS/2 mouse interface	CN7
Serial port 1	CN1	Chassis fan power	CN12
Serial port 2	CN2	32-bit PCI slots	PC1 – PC4
Parallel port	CN3	USB connector	USB
Floppy drive interface	CN4	VRM connector	VRM
IDE interface 2	CN5		

USER CONFIGURABLE SETTINGS

Function	Label	Position
» CMOS memory normal operation	JP12	Pins 1 & 2 closed
CMOS memory clear	JP12	Pins 2 & 3 closed
» On board I/O enabled	JP13	Pins 1 & 2 closed
On board I/O disabled	JP13	Pins 2 & 3 closed
» ISA clock select CLK/3	JP14	Pins 1 & 2 closed
ISA clock select CLK/4	JP14	Pins 2 & 3 closed
» PS/2 mouse enabled	JP15	Pins 1 & 2 closed
PS/2 mouse disabled	JP15	Pins 2 & 3 closed
» Flash BIOS voltage select 5v	JP16	Pins 2 & 3 closed
Flash BIOS voltage select 12v	JP16	Pins 1 & 2 closed
» Factory configured - do not alter	JP17	Unidentified
» Factory configured - do not alter	JP18	Unidentified
» Factory configured - do not alter	JP20	Unidentified
» Factory configured - do not alter	JP21	Unidentified

»	Factory configured - do not alter	JP22	Unidentified
»	Factory configured - do not alter	JP23	Unidentified
»	Keyboard clock select 8MHz	JP24	Pins 1 & 2 closed
	Keyboard clock select 12MHz	JP24	Pins 2 & 3 closed

DIMM CONFIGURATION		
Size	Bank 0	Bank 1
8MB	(1) 1M x 64	None
16MB	(1) 2M x 64	None
16MB	(1) 1M x 64	(1) 1M x 64
24MB	(1) 2M x 64	(1) 1M x 64
32MB	(1) 4M x 64	None
32MB	(1) 2M x 64	(1) 2M x 64
40MB	(1) 4M x 64	(1) 1M x 64
48MB	(1) 4M x 64	(1) 2M x 64
64MB	(1) 8M x 64	None
64MB	(1) 4M x 64	(1) 4M x 64
72MB	(1) 8M x 64	(1) 1M x 64
80MB	(1) 8M x 64	(1) 2M x 64
96MB	(1) 8M x 64	(1) 4M x 64
128MB	(1) 8M x 64	(1) 8M x 64
Note: Board accepts EDO & SDRAM memory.		

DIMM CONFIGURATION		
Type	JP8	JP9
» SDRAM	Open	Open

	EDO	Pins 1 & 2, 3 & 4, 5 & 6 closed	Pins 1 & 2, 3 & 4, 5 & 6 closed
--	-----	---------------------------------	---------------------------------

CACHE CONFIGURATION	
Size	Bank 0
256KB	(2) 32K x 32
512KB	(2) 64K x 32

CPU SPEED SELECTION						
CPU speed	Clock speed	Multiplier	JP1	JP2	JP3	JP4
75MHz	50MHz	1.5x	1 & 2	1 & 2	1 & 2	1 & 2
90MHz	60MHz	1.5x	1 & 2	1 & 2	2 & 3	1 & 2
100MHz	66MHz	1.5x	1 & 2	1 & 2	1 & 2	2 & 3
120MHz	60MHz	2x	1 & 2	2 & 3	2 & 3	1 & 2
133MHz	66MHz	2x	1 & 2	2 & 3	1 & 2	2 & 3
150MHz	60MHz	2.5x	2 & 3	2 & 3	2 & 3	1 & 2
166MHz	66MHz	2.5x	2 & 3	2 & 3	1 & 2	2 & 3
200MHz	66MHz	3x	2 & 3	1 & 2	1 & 2	2 & 3

Note: Pins designated should be in the closed position.

CPU TYPE SELECTION		
Type	JP5	JP6
» P54C	Pins 1 & 2, 3 & 4, 5 & 6 closed	Pins 1 & 2, 3 & 4, 5 & 6 closed
P55C	Open	Open

CPU VOLTAGE SELECTION	
Voltage	JP7

3.45v	Pins 1 & 2 closed
3.52v	Pins 2 & 3 closed

DMA CHANNEL SELECTION		
Channel	JP10	JP11
1	Pins 2 & 3 closed	Pins 2 & 3 closed
» 3	Pins 1 & 2 closed	Pins 1 & 2 closed