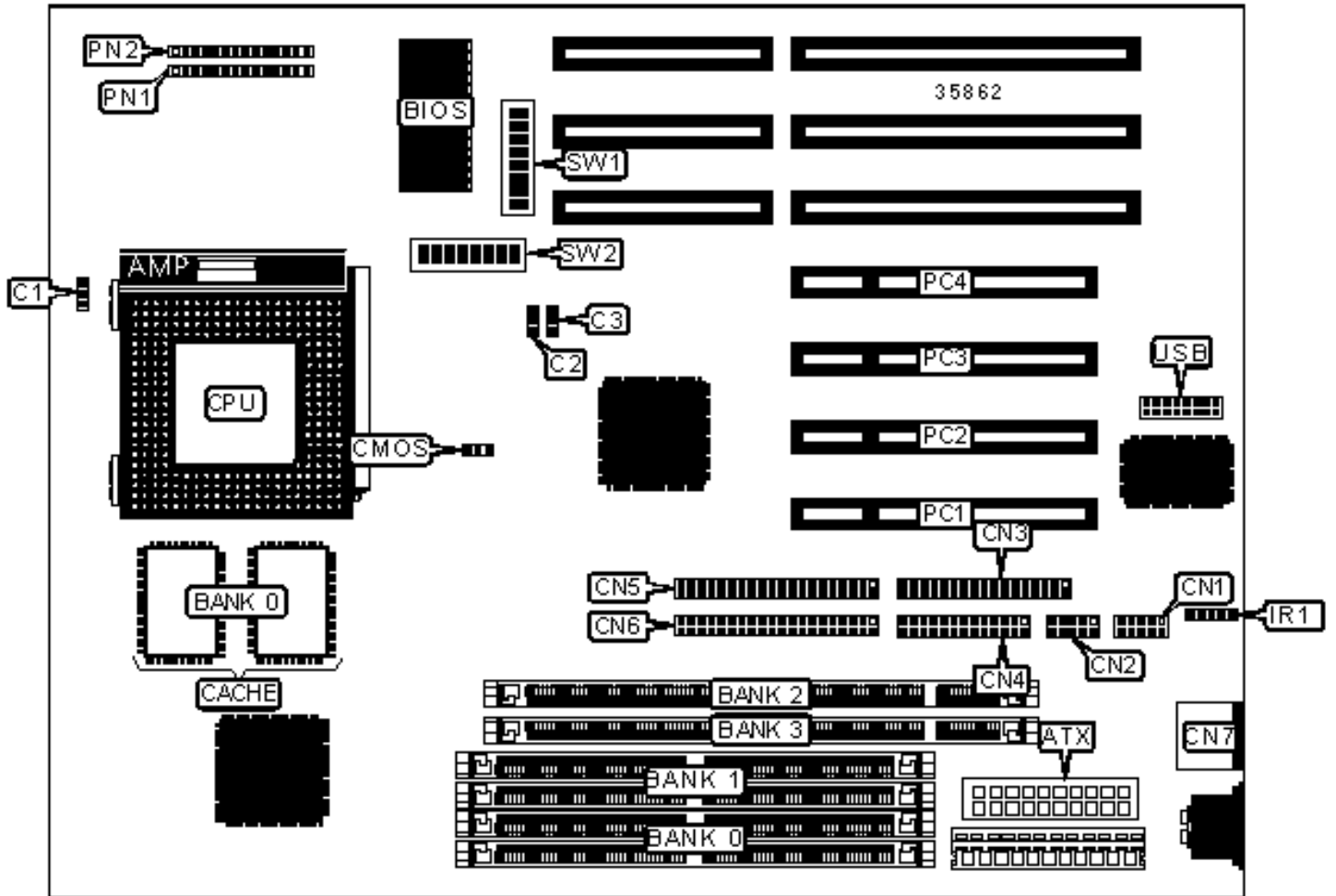


ABIT COMPUTER CORPORATION

TX5N

Configuration



CONNECTIONS

Purpose	Location	Purpose	Location
ATX power connector	ATX	IR connector	IR1
CPU fan power	C1	32-bit PCI slots	PC1 – PC4
CPU fan power	C2	Power LED & keylock	PN1/pins 1 - 5
CPU fan power	C3	IDE interface LED	PN1/pins 7 & 8
Serial port 1	CN1	Soft off power supply	PN1/pins 10 & 11
Serial port 2	CN2	Green PC connector	PN1/pins 13 & 14
Floppy drive interface	CN3	Reset switch	PN2/pins 1 & 2
Parallel port	CN4	Speaker	PN2/pins 4 – 7
IDE interface 2	CN5	Green PC LED	PN2/pins 9 & 10
IDE interface 1	CN6	USB connector	USB
PS/2 mouse port	CN7		

USER CONFIGURABLE SETTINGS

Function	Label	Position
» CMOS memory normal operation	CMOS	Pins 1 & 2 closed
CMOS memory clear	CMOS	Pins 2 & 3 closed

SIMM CONFIGURATION

Size	Bank 0	Bank 1
8MB	(2) 1M x 36	None
16MB	(2) 2M x 36	None
16MB	(2) 1M x 36	(2) 1M x 36
24MB	(2) 2M x 36	(2) 1M x 36
32MB	(2) 4M x 36	None

32MB	(2) 2M x 36	(2) 2M x 36
40MB	(2) 4M x 36	(2) 1M x 36
48MB	(2) 4M x 36	(2) 2M x 36
64MB	(2) 8M x 36	None
64MB	(2) 4M x 36	(2) 4M x 36
72MB	(2) 8M x 36	(2) 1M x 36
80MB	(2) 8M x 36	(2) 2M x 36
96MB	(2) 8M x 36	(2) 4M x 36
128MB	(2) 8M x 36	(2) 8M x 36
128MB	(2) 16M x 36	None

SIMM CONFIGURATION (CON'T)

Size	Bank 0	Bank 1
136MB	(2) 16M x 36	(2) 1M x 36
144MB	(2) 16M x 36	(2) 2M x 36
160MB	(2) 16M x 36	(2) 4M x 36
192MB	(2) 16M x 36	(2) 8M x 36
256MB	(2) 16M x 36	(2) 16M x 36

Note: Board accepts EDO memory.

DIMM CONFIGURATION

Size	Bank 2	Bank 3
8MB	(1) 1M x 64	None
16MB	(1) 2M x 64	None
16MB	(1) 1M x 64	(1) 1M x 64
24MB	(1) 2M x 64	(1) 1M x 64

32MB	(1) 4M x 64	None
32MB	(1) 2M x 64	(1) 2M x 64
40MB	(1) 4M x 64	(1) 1M x 64
48MB	(1) 4M x 64	(1) 2M x 64
64MB	(1) 8M x 64	None
64MB	(1) 4M x 64	(1) 4M x 64
72MB	(1) 8M x 64	(1) 1M x 64
80MB	(1) 8M x 64	(1) 2M x 64
96MB	(1) 8M x 64	(1) 4M x 64
128MB	(1) 16M x 64	None
128MB	(1) 8M x 64	(1) 8M x 64
136MB	(1) 16M x 64	(1) 1M x 64
144MB	(1) 16M x 64	(1) 2M x 64
160MB	(1) 16M x 64	(1) 4M x 64
192MB	(1) 16M x 64	(1) 8M x 64
256MB	(1) 16M x 64	(1) 16M x 64

Note: Board accepts SDRAM memory.

CACHE CONFIGURATION

Size	Bank 0
512KB	(2) 64K x 32

CPU SPEED SELECTION (CX 6X86)

CPU speed	Clock speed	Multiplier	SW1/1	SW1/2	SW1/3	SW1/4
120MHz	50MHz	2x	On	Off	Off	Off
133MHz	55MHz	2x	On	Off	Off	Off

150MHz	60MHz	2x	On	Off	Off	Off
166MHz (N)	66MHz	2x	On	Off	Off	Off
166MHz (T)	66MHz	2x	On	Off	Off	Off
200MHz	75MHz	2x	On	Off	Off	Off
Note: N = normal mode. T = turbo mode.						

CPU SPEED SELECTION (CX 6X86, CON'T)						
CPU speed	Clock speed	Multiplier	SW1/5	SW1/6	SW1/7	SW1/8
120MHz	50MHz	2x	Off	On	On	On
133MHz	55MHz	2x	Off	Off	On	On
150MHz	60MHz	2x	Off	On	On	Off
166MHz (N)	66MHz	2x	Off	On	Off	On
166MHz (T)	66MHz	2x	Off	Off	Off	Off
200MHz	75MHz	2x	Off	Off	On	Off
Note: N = normal mode. T = turbo mode.						

CPU SPEED SELECTION (IBM 6X86)						
CPU speed	Clock speed	Multiplier	SW1/1	SW1/2	SW1/3	SW1/4
120MHz	50MHz	2x	On	Off	Off	Off
133MHz	55MHz	2x	On	Off	Off	Off
150MHz	60MHz	2x	On	Off	Off	Off
166MHz (N)	66MHz	2x	On	Off	Off	Off
166MHz (T)	66MHz	2x	On	Off	Off	Off
200MHz	75MHz	2x	On	Off	Off	Off
Note: N = normal mode. T = turbo mode.						

CPU SPEED SELECTION (IBM 6X86, CON'T)

CPU speed	Clock speed	Multiplier	SW1/5	SW1/6	SW1/7	SW1/8
120MHz	50MHz	2x	Off	On	On	On
133MHz	55MHz	2x	Off	Off	On	On
150MHz	60MHz	2x	Off	On	On	Off
166MHz (N)	66MHz	2x	Off	On	Off	On
166MHz (T)	66MHz	2x	Off	Off	Off	Off
200MHz	75MHz	2x	Off	Off	On	Off

Note: N = normal mode. T = turbo mode.

CPU SPEED SELECTION (CX 6X86L)

CPU speed	Clock speed	Multiplier	SW1/1	SW1/2	SW1/3	SW1/4
120MHz	50MHz	2x	On	Off	Off	Off
133MHz	55MHz	2x	On	Off	Off	Off
150MHz	60MHz	2x	On	Off	Off	Off
166MHz (N)	66MHz	2x	On	Off	Off	Off
166MHz (T)	66MHz	2x	On	Off	Off	Off
200MHz	75MHz	2x	On	Off	Off	Off

Note: N = normal mode. T = turbo mode.

CPU SPEED SELECTION (CX 6X86L, CON'T)

CPU speed	Clock speed	Multiplier	SW1/5	SW1/6	SW1/7	SW1/8
120MHz	50MHz	2x	Off	On	On	On
133MHz	55MHz	2x	Off	Off	On	On
150MHz	60MHz	2x	Off	On	On	Off
166MHz (N)	66MHz	2x	Off	On	Off	On

166MHz (T)	66MHz	2x	Off	Off	Off	Off
200MHz	75MHz	2x	Off	Off	On	Off
Note: N = normal mode. T = turbo mode.						

CPU SPEED SELECTION (IBM 6X86L)						
CPU speed	Clock speed	Multiplier	SW1/1	SW1/2	SW1/3	SW1/4
120MHz	50MHz	2x	On	Off	Off	Off
133MHz	55MHz	2x	On	Off	Off	Off
150MHz	60MHz	2x	On	Off	Off	Off
166MHz (N)	66MHz	2x	On	Off	Off	Off
166MHz (T)	66MHz	2x	On	Off	Off	Off
200MHz	75MHz	2x	On	Off	Off	Off
Note: N = normal mode. T = turbo mode.						

CPU SPEED SELECTION (IBM 6X86L, CON'T)						
CPU speed	Clock speed	Multiplier	SW1/5	SW1/6	SW1/7	SW1/8
120MHz	50MHz	2x	Off	On	On	On
133MHz	55MHz	2x	Off	Off	On	On
150MHz	60MHz	2x	Off	On	On	Off
166MHz (N)	66MHz	2x	Off	On	Off	On
166MHz (T)	66MHz	2x	Off	Off	Off	Off
200MHz	75MHz	2x	Off	Off	On	Off
Note: N = normal mode. T = turbo mode.						

CPU SPEED SELECTION (CX 6X86MX)						
CPU speed	Clock speed	Multiplier	SW1/1	SW1/2	SW1/3	SW1/4

150MHz (N)	66MHz	2x	On	Off	Off	Off
150MHz (T)	66MHz	2.5x	On	On	Off	Off
166MHz	60MHz	2.5x	On	On	Off	Off
200MHz (N)	66MHz	2.5x	On	On	Off	Off
200MHz (T)	66MHz	2.5x	On	On	Off	Off
200MHz	75MHz	2x	On	Off	Off	Off
233MHz (N)	66MHz	3x	Off	On	Off	Off
233MHz (T)	66MHz	3x	Off	On	Off	Off
233MHz	75MHz	2.5x	On	On	Off	Off
233MHz	83MHz	2x	On	Off	Off	Off
266MHz (N)	66MHz	3.5x	Off	Off	Off	Off
266MHz (T)	66MHz	3.5x	Off	Off	Off	Off
Note: N = normal mode. T = turbo mode.						

CPU SPEED SELECTION (CX 6X86MX, CON'T)						
CPU speed	Clock speed	Multiplier	SW1/5	SW1/6	SW1/7	SW1/8
150MHz (N)	66MHz	2x	Off	On	Off	On
150MHz (T)	66MHz	2.5x	Off	Off	Off	Off
166MHz	60MHz	2.5x	Off	On	On	Off
200MHz (N)	66MHz	2.5x	Off	On	Off	On
200MHz (T)	66MHz	2.5x	Off	Off	Off	Off
200MHz	75MHz	2x	Off	Off	On	Off
233MHz (N)	66MHz	3x	Off	On	Off	On
233MHz (T)	66MHz	3x	Off	Off	Off	Off
233MHz	75MHz	2.5x	Off	Off	On	Off
233MHz	83MHz	2x	Off	Off	Off	On

266MHz (N)	66MHz	3.5x	Off	On	Off	On
266MHz (T)	66MHz	3.5x	Off	Off	Off	Off
Note: N = normal mode. T = turbo mode.						

CPU SPEED SELECTION (IBM 6X86MX)						
CPU speed	Clock speed	Multiplier	SW1/1	SW1/2	SW1/3	SW1/4
150MHz (N)	66MHz	2x	On	Off	Off	Off
150MHz (T)	66MHz	2.5x	On	On	Off	Off
166MHz	60MHz	2.5x	On	On	Off	Off
200MHz (N)	66MHz	2.5x	On	On	Off	Off
200MHz (T)	66MHz	2.5x	On	On	Off	Off
200MHz	75MHz	2x	On	Off	Off	Off
233MHz (N)	66MHz	3x	Off	On	Off	Off
233MHz (T)	66MHz	3x	Off	On	Off	Off
233MHz	75MHz	2.5x	On	On	Off	Off
233MHz	83MHz	2x	On	Off	Off	Off
266MHz (N)	66MHz	3.5x	Off	Off	Off	Off
266MHz (T)	66MHz	3.5x	Off	Off	Off	Off
Note: N = normal mode. T = turbo mode.						

CPU SPEED SELECTION (IBM 6X86MX, CON'T)						
CPU speed	Clock speed	Multiplier	SW1/5	SW1/6	SW1/7	SW1/8
150MHz (N)	66MHz	2x	Off	On	Off	On
150MHz (T)	66MHz	2.5x	Off	Off	Off	Off
166MHz	60MHz	2.5x	Off	On	On	Off
200MHz (N)	66MHz	2.5x	Off	On	Off	On

200MHz (T)	66MHz	2.5x	Off	Off	Off	Off
200MHz	75MHz	2x	Off	Off	On	Off
233MHz (N)	66MHz	3x	Off	On	Off	On
233MHz (T)	66MHz	3x	Off	Off	Off	Off
233MHz	75MHz	2.5x	Off	Off	On	Off
233MHz	83MHz	2x	Off	Off	Off	On
266MHz (N)	66MHz	3.5x	Off	On	Off	On
266MHz (T)	66MHz	3.5x	Off	Off	Off	Off
Note: N = normal mode. T = turbo mode.						

CPU SPEED SELECTION (AM K5)						
CPU speed	Clock speed	Multiplier	SW1/1	SW1/2	SW1/3	SW1/4
75MHz	50MHz	1.5x	Off	Off	Off	Off
90MHz	60MHz	1.5x	Off	Off	Off	Off
100MHz (N)	66MHz	1.5x	Off	Off	Off	Off
100MHz (T)	66MHz	1.5x	Off	Off	Off	Off
120MHz	60MHz	2x	Off	Off	Off	Off
133MHz (N)	66MHz	2x	On	Off	Off	Off
133MHz (T)	66MHz	2x	On	Off	Off	Off
150MHz	60MHz	2.5x	On	On	Off	Off
166MHz (N)	60MHz	2.5x	On	On	Off	Off
166MHz (T)	66MHz	2.5x	On	On	Off	Off
Note: N = normal mode. T = turbo mode.						

CPU SPEED SELECTION (AM K5, CON'T)						
CPU speed	Clock speed	Multiplier	SW1/5	SW1/6	SW1/7	SW1/8

75MHz	50MHz	1.5x	Off	On	On	On
90MHz	60MHz	1.5x	Off	On	On	Off
100MHz (N)	66MHz	1.5x	Off	On	Off	On
100MHz (T)	66MHz	1.5x	Off	Off	Off	Off
120MHz	60MHz	2x	Off	On	On	Off
133MHz (N)	66MHz	2x	Off	On	Off	On
133MHz (T)	66MHz	2x	Off	Off	Off	Off
150MHz	60MHz	2.5x	Off	On	On	Off
166MHz (N)	60MHz	2.5x	Off	On	Off	On
166MHz (T)	66MHz	2.5x	Off	Off	Off	Off

Note: N = normal mode. T = turbo mode.

CPU SPEED SELECTION (AM K6)

CPU speed	Clock speed	Multiplier	SW1/1	SW1/2	SW1/3	SW1/4
166MHz (N)	66MHz	2.5x	On	On	Off	Off
166MHz (T)	66MHz	2.5x	On	On	Off	Off
200MHz (N)	66MHz	3x	Off	On	Off	Off
200MHz (T)	66MHz	3x	Off	On	Off	Off
233MHz (N)	66MHz	3.5x	Off	Off	Off	Off
233MHz (T)	66MHz	3.5x	Off	Off	Off	Off
266MHz (N)	66MHz	4x	On	Off	On	Off
266MHz (T)	66MHz	4x	On	Off	On	Off
300MHz (N)	66MHz	4.5x	On	On	On	Off
300MHz (T)	66MHz	4.5x	On	On	On	Off

Note: N = normal mode. T = turbo mode.

CPU SPEED SELECTION (AM K6, CON'T)

CPU speed	Clock speed	Multiplier	SW1/5	SW1/6	SW1/7	SW1/8
166MHz (N)	66MHz	2.5x	Off	On	Off	On
166MHz (T)	66MHz	2.5x	Off	Off	Off	Off
200MHz (N)	66MHz	3x	Off	On	Off	On
200MHz (T)	66MHz	3x	Off	Off	Off	Off
233MHz (N)	66MHz	3.5x	Off	On	Off	On
233MHz (T)	66MHz	3.5x	Off	Off	Off	Off
266MHz (N)	66MHz	4x	Off	On	Off	On
266MHz (T)	66MHz	4x	Off	Off	Off	Off
300MHz (N)	66MHz	4.5x	Off	On	Off	On
300MHz (T)	66MHz	4.5x	Off	Off	Off	Off

Note: N = normal mode. T = turbo mode.

CPU SPEED SELECTION (INTEL)

CPU speed	Clock speed	Multiplier	SW1/1	SW1/2	SW1/3	SW1/4
75MHz	50MHz	1.5x	Off	Off	Off	Off
90MHz	60MHz	1.5x	Off	Off	Off	Off
100MHz (N)	66MHz	1.5x	Off	Off	Off	Off
100MHz (T)	66MHz	1.5x	Off	Off	Off	Off
120MHz	60MHz	2x	On	Off	Off	Off
133MHz (N)	66MHz	2x	On	Off	Off	Off
133MHz (T)	66MHz	2x	On	Off	Off	Off
150MHz	60MHz	2.5x	On	On	Off	Off
166MHz (N)	66MHz	2.5x	On	On	Off	Off
166MHz (T)	66MHz	2.5x	On	On	Off	Off

200MHz (N)	66MHz	3x	Off	On	Off	Off
200MHz (T)	66MHz	3x	Off	On	Off	Off
Note: N = normal mode. T = turbo mode.						

CPU SPEED SELECTION (INTEL, CON'T)						
CPU speed	Clock speed	Multiplier	SW1/5	SW1/6	SW1/7	SW1/8
75MHz	50MHz	1.5x	Off	On	On	On
90MHz	60MHz	1.5x	Off	On	On	Off
100MHz (N)	66MHz	1.5x	Off	On	Off	On
100MHz (T)	66MHz	1.5x	Off	Off	Off	Off
120MHz	60MHz	2x	Off	On	On	Off
133MHz (N)	66MHz	2x	Off	On	Off	On
133MHz (T)	66MHz	2x	Off	Off	Off	Off
150MHz	60MHz	2.5x	Off	On	On	Off
166MHz (N)	66MHz	2.5x	Off	On	Off	On
166MHz (T)	66MHz	2.5x	Off	Off	Off	Off
200MHz (N)	66MHz	3x	Off	On	Off	On
200MHz (T)	66MHz	3x	Off	Off	Off	Off
Note: N = normal mode. T = turbo mode.						

CPU SPEED SELECTION (INTEL MMX)						
CPU speed	Clock speed	Multiplier	SW1/1	SW1/2	SW1/3	SW1/4
166MHz (N)	66MHz	2.5x	On	On	Off	Off
166MHz (T)	66MHz	2.5x	On	On	Off	Off
200MHz (N)	66MHz	3x	Off	On	Off	Off
200MHz (T)	66MHz	3x	Off	On	Off	Off

233MHz (N)	66MHz	3.5x	Off	Off	Off	Off
233MHz (T)	66MHz	3.5x	Off	Off	Off	Off
Note: N = normal mode. T = turbo mode.						

CPU SPEED SELECTION (INTEL MMX, CON'T)						
CPU speed	Clock speed	Multiplier	SW1/5	SW1/6	SW1/7	SW1/8
166MHz (N)	66MHz	2.5x	Off	On	Off	On
166MHz (T)	66MHz	2.5x	Off	Off	Off	Off
200MHz (N)	66MHz	3x	Off	On	Off	On
200MHz (T)	66MHz	3x	Off	Off	Off	Off
233MHz (N)	66MHz	3.5x	Off	On	Off	On
233MHz (T)	66MHz	3.5x	Off	Off	Off	Off
Note: N = normal mode. T = turbo mode.						

CPU VOLTAGE SELECTION (SINGLE)								
Voltage	SW2/1	SW2/2	SW2/3	SW2/4	SW2/5	SW2/6	SW2/7	SW2/8
3.3v	On	Off	On	On	Off	Off	On	Off

CPU VOLTAGE SELECTION (DUAL)						
Voltage	V core	SW2/1	SW2/2	SW2/3	SW2/4	
3.38v	2.0v	Off	Off	Off	Off	
3.38v	2.1v	On	Off	Off	Off	
3.38v	2.2v	Off	On	Off	Off	
3.38v	2.3v	On	On	Off	Off	
3.38v	2.4v	Off	Off	On	Off	
3.38v	2.5v	On	Off	On	Off	

3.38v	2.6v	Off	On	On	Off
3.38v	2.7v	On	On	On	Off
3.38v	2.8v	Off	Off	Off	On
3.38v	2.9v	On	Off	Off	On
3.38v	3.2v	Off	Off	On	On
3.3v	3.4v	Off	On	On	On
3.3v	3.5v	On	On	On	On

CPU VOLTAGE SELECTION (DUAL, CON'T)

Voltage	V core	SW2/5	SW2/6	SW2/7	SW2/8
3.38v	2.0v	Off	Off	Off	On
3.38v	2.1v	Off	Off	Off	On
3.38v	2.2v	Off	Off	Off	On
3.38v	2.3v	Off	Off	Off	On
3.38v	2.4v	Off	Off	Off	On
3.38v	2.5v	Off	Off	Off	On
3.38v	2.6v	Off	Off	Off	On
3.38v	2.7v	Off	Off	Off	On
3.38v	2.8v	Off	Off	Off	On
3.38v	2.9v	Off	Off	Off	On
3.38v	3.2v	Off	Off	Off	On
3.3v	3.4v	Off	Off	On	Off
3.3v	3.5v	Off	Off	On	Off