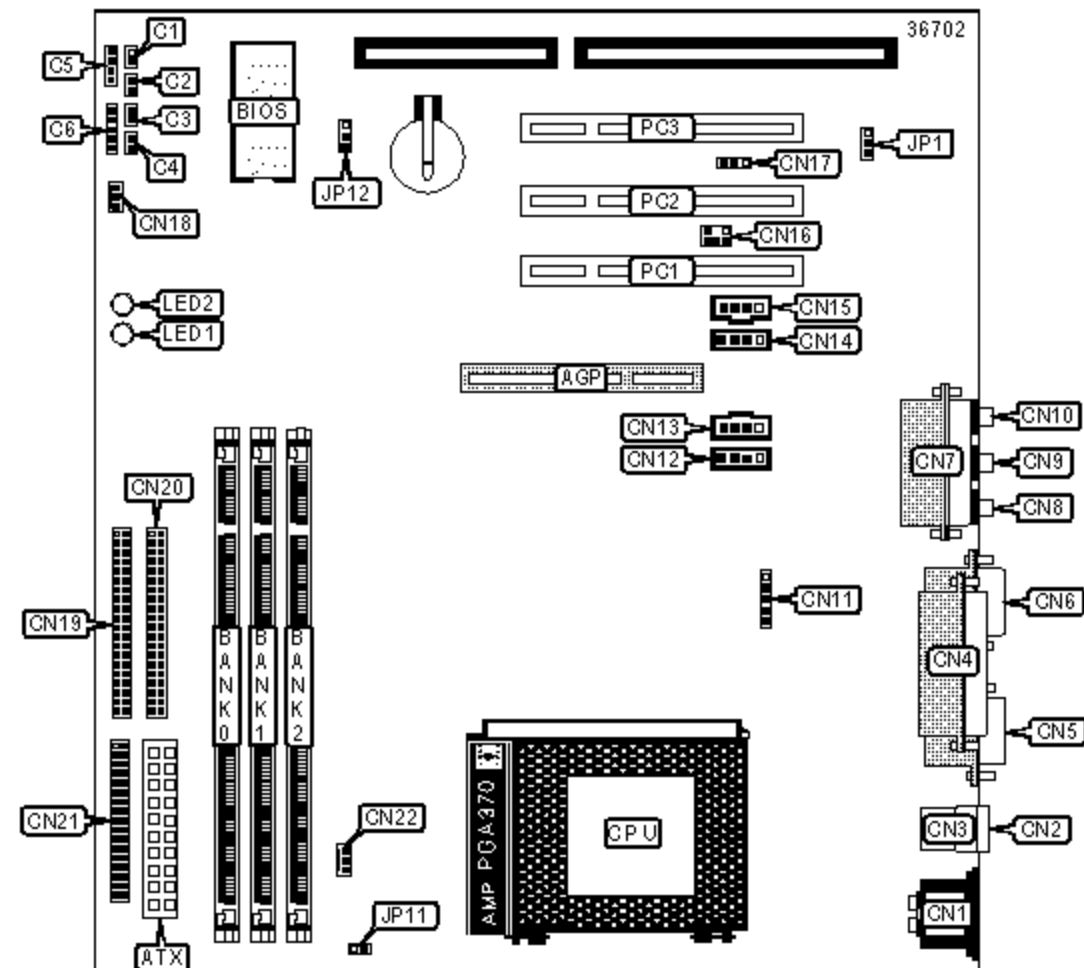


# FREE COMPUTER TECHNOLOGY, INC.

## P6F109VIA

<b>Device Type</b>	Mainboard
<b>Processor</b>	Celeron
<b>Processor Speed</b>	300/333/350/366/400/433/450/466/500/533MHz
<b>Chip Set</b>	VIA
<b>Audio Chip Set</b>	Creative Labs
<b>Maximum Onboard Memory</b>	768MB (EDO & SDRAM supported)
<b>Maximum Audio Memory</b>	Unidentified
<b>Cache</b>	0/128KB (located on the Celeron CPU)
<b>BIOS</b>	Award
<b>Dimensions</b>	244mm x 210mm
<b>I/O Options</b>	32-bit PCI slots (3), floppy drive interface, game/MIDI port, IDE interfaces (2), parallel port, PS/2 mouse port, serial ports (2), IR connector, USB ports (2), ATX power connector, AGP slot, line in, line out, microphone in, audio in - CD-ROMs (2), SB-Link connector, Wake-on-LAN connector, modem voice input connectors (2)



### CONNECTIONS

Purpose	Location	Purpose	Location
AGP slot	AGP	Line in	CN9
ATX power connector	ATX	Microphone in	CN10
IDE interface LED	C1	IR connector	CN11

Standby LED	C2	Modem voice input connector 1 (JST type)	CN12
Reset switch	C3	Modem voice input connector 2 (MPC2 type)	CN13
Power switch	C4	Audio in - CD-ROM (Mitsumi)	CN14
Speaker	C5	Audio in - CD-ROM (Sony)	CN15
Power LED & keylock	C6	SB-Link connector	CN16
PS/2 mouse port	CN1	Wake-on-LAN connector	CN17
USB port 1	CN2	Secondary fan power	CN18
USB port 2	CN3	IDE interface 1	CN19
Parallel port	CN4	IDE interface 2	CN20
Serial port 1	CN5	Floppy drive interface	CN21
Serial port 2	CN6	CPU fan power	CN22
Game/MIDI port	CN7	32-bit PCI slots	PC1-PC3
Line out	CN8		

### USER CONFIGURABLE SETTINGS

Function		Label	Position
»	Onboard audio enabled	JP1	Pins 2 & 3 closed
	Onboard audio disabled	JP1	Pins 1 & 2 closed
»	AGP FSB (Front Side Bus) speed enabled	JP11	Closed
	AGP FSB (Front Side Bus) speed disabled	JP11	Open
»	CMOS memory normal operation	JP12	Pins 1 & 2 closed
	CMOS memory clear	JP12	Pins 2 & 3 closed

Note: If AGP FSB speed is disabled, a 66MHz FSB CPU will be overclocked to 100MHz.

### DIMM CONFIGURATION

Size	Bank 0	Bank 1	Bank 2
8MB	(1) 1M x 64	None	None
16MB	(1) 1M x 64	(1) 1M x 64	None

16MB	(1) 1M x 64	(1) 1M x 64	None
16MB	(1) 2M x 64	None	None
24MB	(1) 1M x 64	(1) 1M x 64	(1) 1M x 64
32MB	(1) 2M x 64	(1) 2M x 64	None
32MB	(1) 4M x 64	None	None
32MB	(1) 2M x 64	(1) 1M x 64	(1) 1M x 64
48MB	(1) 2M x 64	(1) 2M x 64	(1) 2M x 64
48MB	(1) 4M x 64	(1) 1M x 64	(1) 1M x 64
64MB	(1) 4M x 64	(1) 4M x 64	None
64MB	(1) 8M x 64	None	None
64MB	(1) 4M x 64	(1) 2M x 64	(1) 2M x 64
80MB	(1) 8M x 64	(1) 1M x 64	(1) 1M x 64
96MB	(1) 4M x 64	(1) 4M x 64	(1) 4M x 64
96MB	(1) 8M x 64	(1) 2M x 64	(1) 2M x 64
128MB	(1) 8M x 64	(1) 8M x 64	None
128MB	(1) 16M x 64	None	None
128MB	(1) 8M x 64	(1) 4M x 64	(1) 4M x 64
144MB	(1) 16M x 64	(1) 1M x 64	(1) 1M x 64
160MB	(1) 16M x 64	(1) 2M x 64	(1) 2M x 64
192MB	(1) 8M x 64	(1) 8M x 64	(1) 8M x 64
192MB	(1) 16M x 64	(1) 4M x 64	(1) 4M x 64
256MB	(1) 16M x 64	(1) 16M x 64	None
256MB	(1) 32M x 64	None	None
256MB	(1) 16M x 64	(1) 8M x 64	(1) 8M x 64
272MB	(1) 32M x 64	(1) 1M x 64	(1) 1M x 64
288MB	(1) 32M x 64	(1) 2M x 64	(1) 2M x 64
320MB	(1) 32M x 64	(1) 4M x 64	(1) 4M x 64
384MB	(1) 16M x 64	(1) 16M x 64	(1) 16M x 64
384MB	(1) 32M x 64	(1) 8M x 64	(1) 8M x 64

512MB	(1) 32M x 64	(1) 32M x 64	None
512MB	(1) 32M x 64	(1) 16M x 64	(1) 16M x 64
768MB	(1) 32M x 64	(1) 32M x 64	(1) 32M x 64
<p>Note: Board supports EDO &amp; SDRAM memory.</p> <p>Note: EDO &amp; SDRAM can not be mixed.</p>			

### CACHE CONFIGURATION

Note: 128KB cache is located on the Celeron 300A and greater CPUs.

### DIAGNOSTIC LED(S)

LED	Color	Status	Condition
LED1	Green	On	CPU is not installed or mainboard failure
LED1	Green	Blinking	Memory failure
LED1	Green	Off	Normal operation
LED2	Red	On	Memory failure
LED2	Red	On	Video failure
LED2	Red	Off	Normal operation