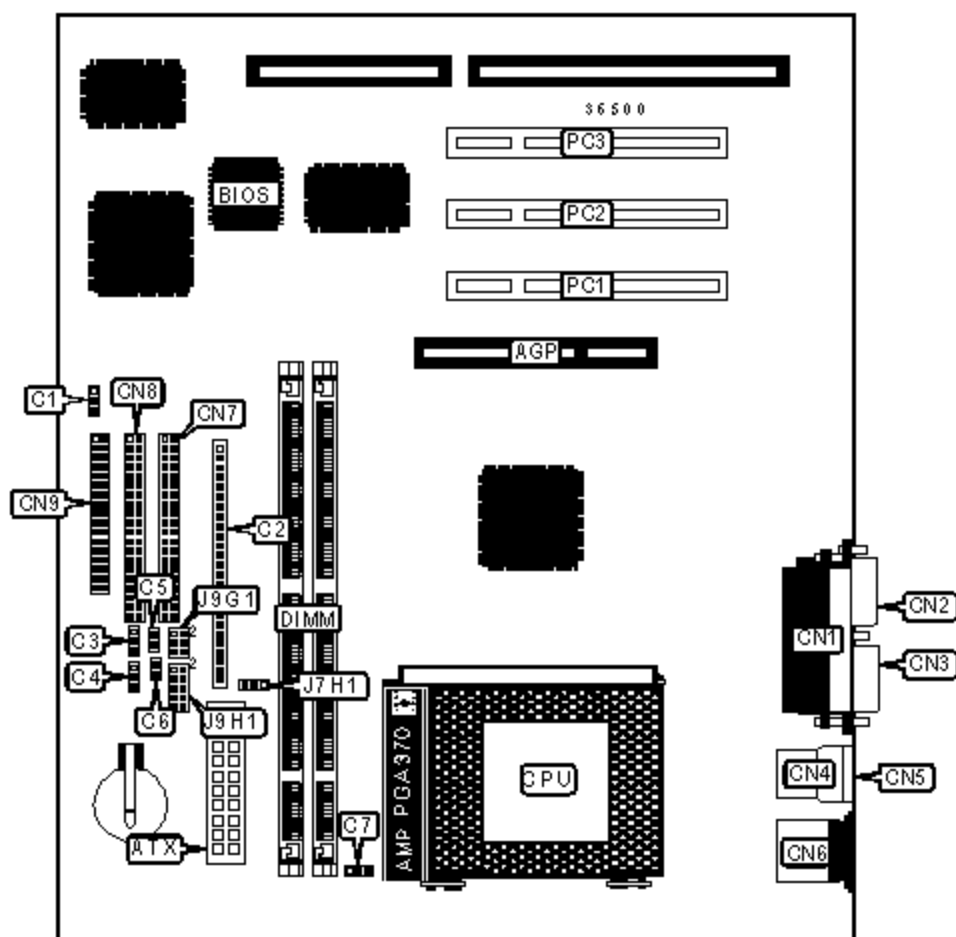


INTEL CORPORATION

BI440ZX

Device Type	Mainboard
Processor	Celeron
Processor Speed	300/333MHz
Chip Set	Intel 440ZX
Maximum Onboard Memory	256MB (SDRAM supported)
Audio Chip Set	Crystal
Cache	128KB (located on Celeron CPU)
BIOS	AMI
Dimensions	254mm x 218mm
I/O Options	32-bit PCI slots (3), floppy drive interface, IDE interfaces (2), parallel port, PS/2 mouse port, serial ports (2), IR connector, USB connectors (2), ATX power connector, AGP slot, wake on LAN connector, wake on modem connector



CONNECTIONS

Purpose	Location	Purpose	Location
AGP slot	AGP	Telephony connector	C11
ATX power connector	ATX	Audio in – CD-ROM	C12
Chassis fan power	C1	Game/MIDI port	CN1
	C2/pins 1 & 2		CN2

Soft off power supply	C2/pins 1 & 2	Microphone in	CN2
Green PC connector	C2/pins 3 & 4	Line in	CN3
IR connector	C2/pins 6 – 11	Line out	CN4
IDE interface LED	C2/pins 13 – 16	Serial port 2	CN5
Power LED	C2/pins 18 – 20	Serial port 1	CN6
Reset switch	C2/pins 22 & 23	Parallel port	CN7
Speaker	C2/pins 24 - 27	USB connector 1	CN8
Wake on LAN connector	C3	USB connector 2	CN9
Power fan power	C4	PS/2 mouse port	CN10
	C5	IDE interface 1	CN11
Wake on modem connector	C6	IDE interface 2	CN12
CPU fan power	C7	Floppy drive interface	CN13
Audio in – CD-ROM	C8	Front panel USB connector	J9H1
Video in	C9	32-bit PCI slots	PC1 – PC3
Auxiliary line in	C10		

DIMM CONFIGURATION

Size	Bank 0	Bank 1
8MB	(1) 1M x 64	None
16MB	(1) 2M x 64	None
16MB	(1) 1M x 64	(1) 1M x 64
24MB	(1) 2M x 64	(1) 1M x 64
32MB	(1) 4M x 64	None
32MB	(1) 2M x 64	(1) 2M x 64
40MB	(1) 4M x 64	(1) 1M x 64
48MB	(1) 4M x 64	(1) 2M x 64
64MB	(1) 8M x 64	None
64MB	(1) 4M x 64	(1) 4M x 64
72MB	(1) 8M x 64	(1) 1M x 64
80MB	(1) 8M x 64	(1) 2M x 64
96MB	(1) 8M x 64	(1) 4M x 64
128MB	(1) 16M x 64	None

128MB	(1) 8M x 64	(1) 8M x 64
136MB	(1) 16M x 64	(1) 1M x 64
144MB	(1) 16M x 64	(1) 2M x 64
160MB	(1) 16M x 64	(1) 4M x 64
192MB	(1) 16M x 64	(1) 8M x 64
256MB	(1) 16M x 64	(1) 16M x 64
Note: Board accepts SDRAM memory.		

CACHE CONFIGURATION
Note: 128KB cache is located on the Celeron CPU.

USB PORT 1 SELECTION	
Setting	J9G1
Signals routed to back panel	Pins 2 & 3, 5 & 6 closed
Signals routed for a front panel USB	Pins 1 & 2, 4 & 5 closed

BIOS SELECTION	
Setting	J7H1
Normal operation	Pins 1 & 2 closed
Configuration mode	Pins 2 & 3 closed
Recovery mode	Open