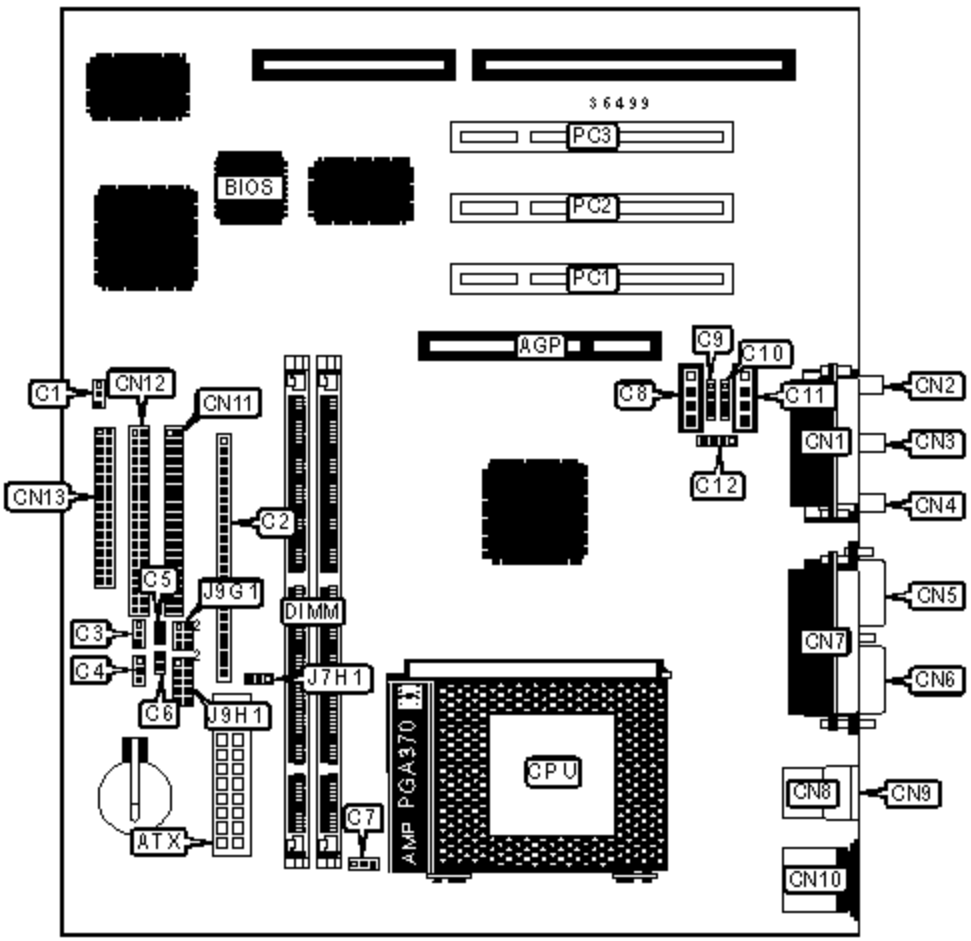


INTEL CORPORATION

BI440ZX (SOUND)

Device Type	Mainboard
Processor	Celeron
Processor Speed	300/333MHz
Chip Set	Intel 440ZX
Maximum Onboard Memory	256MB (SDRAM supported)
Audio Chip Set	Crystal
Cache	128KB (located on Celeron CPU)
BIOS	AMI
Dimensions	254mm x 218mm
I/O Options	32-bit PCI slots (3), floppy drive interface, game/MIDI port, IDE interfaces (2), parallel port, PS/2 mouse port, serial ports (2), IR connector, USB connectors (2), ATX power connector, AGP slot, line in, line out, microphone in, audio in – CD-ROMs (2), wake on LAN connector, wake on modem connector



CONNECTIONS			
Purpose	Location	Purpose	Location
AGP slot	AGP	Telephony connector	C11
ATX power connector	ATX	Audio in – CD-ROM	C12
Chassis fan power	C1	Game/MIDI port	CN1

Soft off power supply	C2/pins 1 & 2	Microphone in	CN2
Green PC connector	C2/pins 3 & 4	Line in	CN3
IR connector	C2/pins 6 – 11	Line out	CN4
IDE interface LED	C2/pins 13 – 16	Serial port 2	CN5
Power LED	C2/pins 18 – 20	Serial port 1	CN6
Reset switch	C2/pins 22 & 23	Parallel port	CN7
Speaker	C2/pins 24 - 27	USB connector 1	CN8
Wake on LAN connector	C3	USB connector 2	CN9
Power fan power	C4	PS/2 mouse port	CN10
	C5	IDE interface 1	CN11
Wake on modem connector	C6	IDE interface 2	CN12
CPU fan power	C7	Floppy drive interface	CN13
Audio in – CD-ROM	C8	Front panel USB connector	J9H1
Video in	C9	32-bit PCI slots	PC1 – PC3
Auxiliary line in	C10		

DIMM CONFIGURATION

Size	Bank 0	Bank 1
8MB	(1) 1M x 64	None
16MB	(1) 2M x 64	None
16MB	(1) 1M x 64	(1) 1M x 64
24MB	(1) 2M x 64	(1) 1M x 64
32MB	(1) 4M x 64	None
32MB	(1) 2M x 64	(1) 2M x 64
40MB	(1) 4M x 64	(1) 1M x 64
48MB	(1) 4M x 64	(1) 2M x 64
64MB	(1) 8M x 64	None
64MB	(1) 4M x 64	(1) 4M x 64
72MB	(1) 8M x 64	(1) 1M x 64
80MB	(1) 8M x 64	(1) 2M x 64
96MB	(1) 8M x 64	(1) 4M x 64

128MB	(1) 16M x 64	None
128MB	(1) 8M x 64	(1) 8M x 64
136MB	(1) 16M x 64	(1) 1M x 64
144MB	(1) 16M x 64	(1) 2M x 64
160MB	(1) 16M x 64	(1) 4M x 64
192MB	(1) 16M x 64	(1) 8M x 64
256MB	(1) 16M x 64	(1) 16M x 64
Note: Board accepts SDRAM memory.		

CACHE CONFIGURATION

Note: 128KB cache is located on the Celeron CPU.

USB PORT 1 SELECTION

Setting	J9G1
Signals routed to back panel	Pins 2 & 3, 5 & 6 closed
Signals routed for a front panel USB	Pins 1 & 2, 4 & 5 closed

BIOS SELECTION

Setting	J7H1
Normal operation	Pins 1 & 2 closed
Configuration mode	Pins 2 & 3 closed
Recovery mode	Open