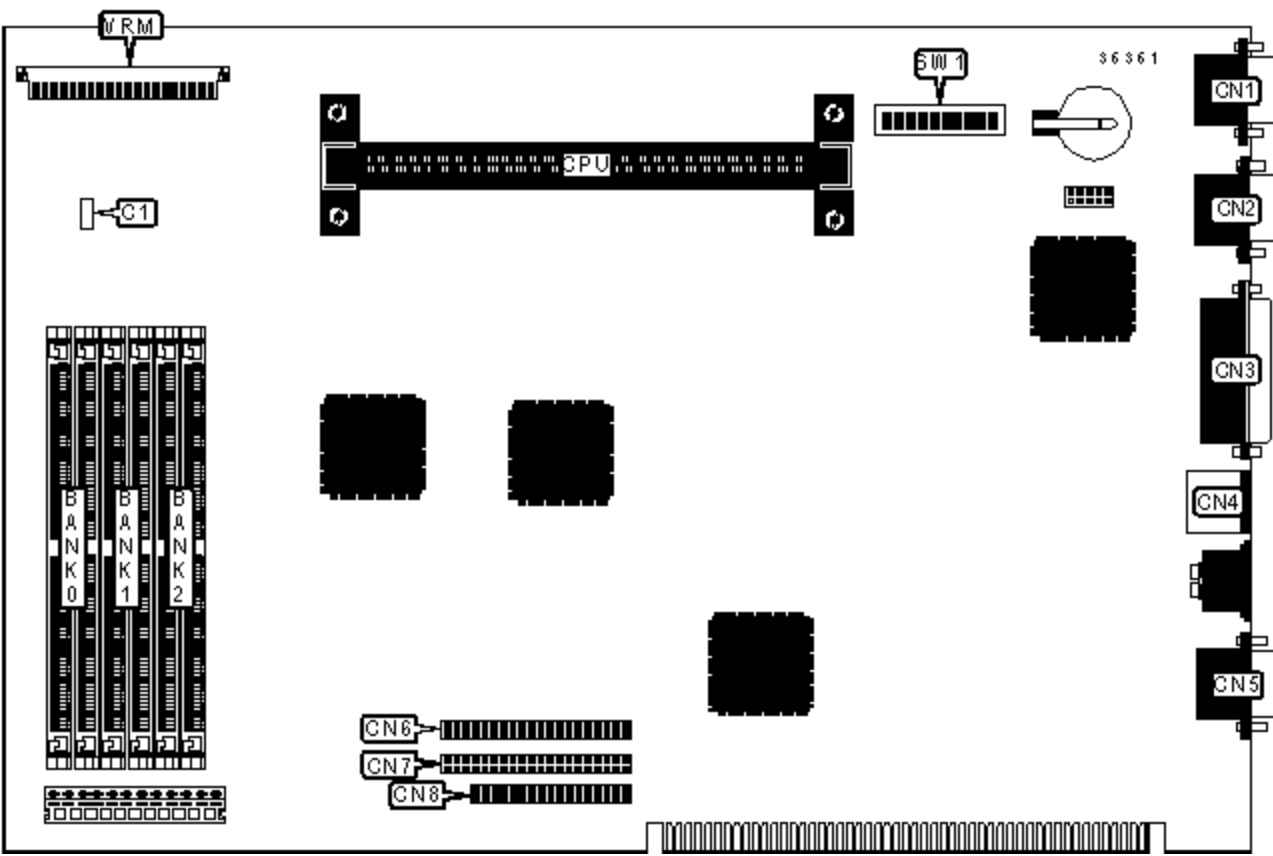


# HEWLETT-PACKARD COMPANY

## HP NETSERVER E45, E50

<b>Device Type</b>	Mainboard
<b>Processor</b>	Pentium II
<b>Processor Speed</b>	233/266/300/333MHz
<b>Chip Set</b>	Unidentified
<b>Video Chip Set</b>	Unidentified
<b>Maximum Onboard Memory</b>	384MB
<b>Maximum Video Memory</b>	Unidentified
<b>Cache</b>	256/512KB (located on Pentium II CPU)
<b>BIOS</b>	Unidentified
<b>Dimensions</b>	330mm x 218mm
<b>I/O Options</b>	Floppy drive interface, IDE interfaces (2), parallel port, PS/2 mouse port, serial ports (2), VGA port



CONNECTIONS			
Purpose	Location	Purpose	Location
Power switch & activity LED	C1	VGA port	CN5
Serial port 2	CN1	IDE interface 1	CN6
Serial port 1	CN2	IDE interface 2	CN7
Parallel port	CN3	Floppy drive interface	CN8
PS/2 mouse port	CN4		

## USER CONFIGURABLE SETTINGS

Function		Label	Position
»	Factory configured - do not alter	J1	Unidentified
»	CMOS memory normal operation	SW1/6	Off
	CMOS memory clear	SW1/6	On
»	Password normal operation	SW1/7	Off
	Password clear	SW1/7	On
»	Space bar power on enabled	SW1/8	On
	Space bar power on disabled	SW1/8	Off
»	Factory configured - do not alter	SW1/9	Off
»	Factory configured - do not alter	SW1/10	Off

## SIMM CONFIGURATION

Size	Bank 0	Bank 1	Bank 2
8MB	(2) 1M x 36	None	None
16MB	(2) 2M x 36	None	None
16MB	(2) 1M x 36	(2) 1M x 36	None
24MB	(2) 2M x 36	(2) 1M x 36	None
24MB	(2) 1M x 36	(2) 1M x 36	(2) 1M x 36
32MB	(2) 4M x 36	None	None
32MB	(2) 2M x 36	(2) 1M x 36	(2) 1M x 36
32MB	(2) 2M x 36	(2) 2M x 36	None
40MB	(2) 4M x 36	(2) 1M x 36	None
40MB	(2) 2M x 36	(2) 2M x 36	(2) 1M x 36

48MB	(2) 4M x 36	(2) 1M x 36	(2) 1M x 36
48MB	(2) 4M x 36	(2) 2M x 36	None
48MB	(2) 2M x 36	(2) 2M x 36	(2) 2M x 36
56MB	(2) 4M x 36	(2) 2M x 36	(2) 1M x 36
64MB	(2) 8M x 36	None	None
64MB	(2) 4M x 36	(2) 2M x 36	(2) 2M x 36
64MB	(2) 4M x 36	(2) 4M x 36	None
72MB	(2) 8M x 36	(2) 1M x 36	None
72MB	(2) 4M x 36	(2) 4M x 36	(2) 1M x 36
80MB	(2) 8M x 36	(2) 1M x 36	(2) 1M x 36
80MB	(2) 8M x 36	(2) 2M x 36	None
80MB	(2) 4M x 36	(2) 4M x 36	(2) 2M x 36

**SIMM CONFIGURATION (CON'T)**

<b>Size</b>	<b>Bank 0</b>	<b>Bank 1</b>	<b>Bank 2</b>
88MB	(2) 8M x 36	(2) 2M x 36	(2) 1M x 36
96MB	(2) 8M x 36	(2) 2M x 36	(2) 2M x 36
96MB	(2) 8M x 36	(2) 4M x 36	None
96MB	(2) 4M x 36	(2) 4M x 36	(2) 4M x 36
104MB	(2) 8M x 36	(2) 4M x 36	(2) 1M x 36
112MB	(2) 8M x 36	(2) 4M x 36	(2) 2M x 36
128MB	(2) 16M x 36	None	None
128MB	(2) 8M x 36	(2) 4M x 36	(2) 4M x 36
128MB	(2) 8M x 36	(2) 8M x 36	None
136MB	(2) 16M x 36	(2) 1M x 36	None
136MB	(2) 8M x 36	(2) 8M x 36	(2) 1M x 36
144MB	(2) 16M x 36	(2) 1M x 36	(2) 1M x 36
144MB	(2) 16M x 36	(2) 2M x 36	None

144MB	(2) 8M x 36	(2) 8M x 36	(2) 2M x 36
152MB	(2) 16M x 36	(2) 2M x 36	(2) 1M x 36
160MB	(2) 16M x 36	(2) 2M x 36	(2) 2M x 36
160MB	(2) 16M x 36	(2) 4M x 36	None
160MB	(2) 8M x 36	(2) 8M x 36	(2) 4M x 36
168MB	(2) 16M x 36	(2) 4M x 36	(2) 1M x 36
176MB	(2) 16M x 36	(2) 4M x 36	(2) 2M x 36
192MB	(2) 16M x 36	(2) 4M x 36	(2) 4M x 36
192MB	(2) 16M x 36	(2) 8M x 36	None
192MB	(2) 8M x 36	(2) 8M x 36	(2) 8M x 36
200MB	(2) 16M x 36	(2) 8M x 36	(2) 1M x 36
208MB	(2) 16M x 36	(2) 8M x 36	(2) 2M x 36
224MB	(2) 16M x 36	(2) 8M x 36	(2) 4M x 36
256MB	(2) 16M x 36	(2) 8M x 36	(2) 8M x 36
384MB	(2) 16M x 36	(2) 16M x 36	(2) 16M x 36

### CACHE CONFIGURATION

Note: 256KB/512KB cache is located on the Pentium II CPU.

### VIDEO MEMORY CONFIGURATION

Note: The size and location of the video memory is unidentified.

### CPU SPEED SELECTION

CPU speed	Clock speed	Multiplier	SW1/1	SW1/2	SW1/3	SW1/4	SW1/5
233MHz	66MHz	3.5x	Off	Off	Off	On	On
266MHz	66MHz	4x	Off	Off	On	Off	Off
300MHz	66MHz	4.5x	Off	Off	On	Off	On

333MHz

66MHz

5x

Off

Off

On

On

Off