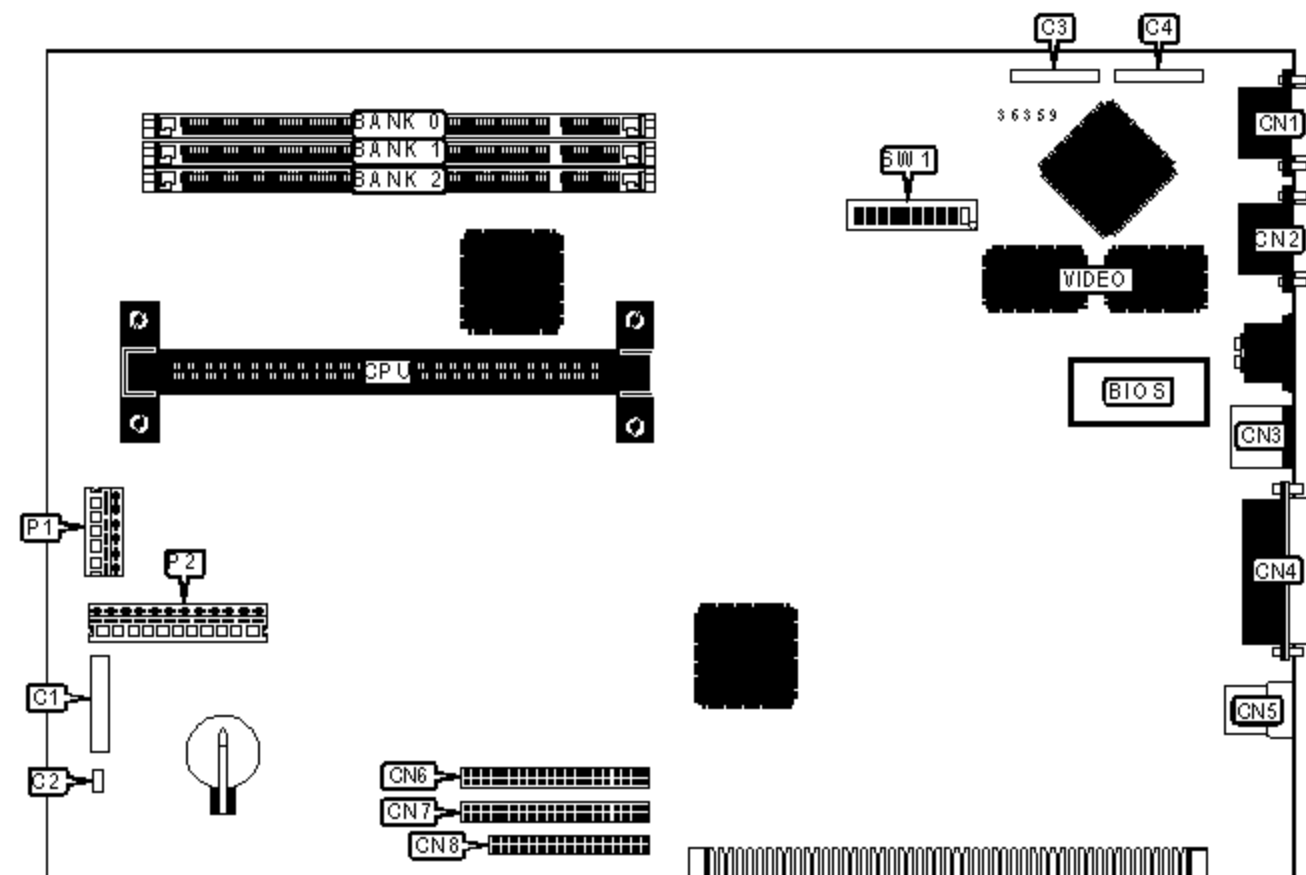


HEWLETT-PACKARD COMPANY

HP VECTRA VL/6XXX SERIES 8

Device Type	Mainboard
Processor	Pentium II
Processor Speed	233/266/300/333/366/350/400/450MHz
Chip Set	Intel 440BX
Video Chip Set	Matrox
Maximum Onboard Memory	384MB (SDRAM & PC100 supported)
Maximum Video Memory	8MB
Cache	512KB (located on Pentium II CPU)
BIOS	Unidentified
Dimensions	330mm x 218mm
I/O Options	Floppy drive interface, IDE interfaces (2), parallel port, PS/2 mouse port, serial port, VGA port, USB connector



CONNECTIONS

Purpose	Location	Purpose	Location
Status panel connector	C1	Parallel port	CN4
External battery	C2	USB connector	CN5
Matrox multimedia connector	C3	IDE interface 1	CN6
Matrox multimedia connector	C4	IDE interface 2	CN7
VGA port	CN1	Game/MIDI port	CN8
Serial port	CN2	Floppy drive interface	P1

Serial port	CN2	Floppy drive interfaces	F1
PS/2 mouse port	CN3	5v power	P2

USER CONFIGURABLE SETTINGS

Function		Label	Position
»	System speed select auto select	SW1/1	Off
	System speed select 66MHz	SW1/1	On
»	CMOS memory normal operation	SW1/6	Off
	CMOS memory clear	SW1/6	On
»	Password normal operation	SW1/7	Off
	Password clear	SW1/7	On
»	Keyboard power on disabled	SW1/8	On
	Keyboard power on enabled	SW1/8	Off
»	Flash BIOS normal operation	SW1/9	Off
	Flash BIOS recovery mode	SW1/9	On
»	Factory configured - do not alter	SW1/10	On

DIMM CONFIGURATION

Size	Bank 0	Bank 1	Bank 2
8MB	(1) 1M x 64	None	None
16MB	(1) 2M x 64	None	None
16MB	(1) 1M x 64	(1) 1M x 64	None
24MB	(1) 2M x 64	(1) 1M x 64	None
24MB	(1) 1M x 64	(1) 1M x 64	(1) 1M x 64
32MB	(1) 4M x 64	None	None
32MB	(1) 2M x 64	(1) 1M x 64	(1) 1M x 64
32MB	(1) 2M x 64	(1) 2M x 64	None

40MB	(1) 4M x 64	(1) 1M x 64	None
40MB	(1) 2M x 64	(1) 2M x 64	(1) 1M x 64
48MB	(1) 4M x 64	(1) 1M x 64	(1) 1M x 64
48MB	(1) 4M x 64	(1) 2M x 64	None
48MB	(1) 2M x 64	(1) 2M x 64	(1) 2M x 64
56MB	(1) 4M x 64	(1) 2M x 64	(1) 1M x 64
64MB	(1) 8M x 64	None	None
64MB	(1) 4M x 64	(1) 2M x 64	(1) 2M x 64
64MB	(1) 4M x 64	(1) 4M x 64	None
72MB	(1) 8M x 64	(1) 1M x 64	None

DIMM CONFIGURATION (CON'T)			
Size	Bank 0	Bank 1	Bank 2
72MB	(1) 4M x 64	(1) 4M x 64	(1) 1M x 64
80MB	(1) 8M x 64	(1) 1M x 64	(1) 1M x 64
80MB	(1) 8M x 64	(1) 2M x 64	None
80MB	(1) 4M x 64	(1) 4M x 64	(1) 2M x 64
88MB	(1) 8M x 64	(1) 2M x 64	(1) 1M x 64
96MB	(1) 8M x 64	(1) 2M x 64	(1) 2M x 64
96MB	(1) 8M x 64	(1) 4M x 64	None
96MB	(1) 4M x 64	(1) 4M x 64	(1) 4M x 64
104MB	(1) 8M x 64	(1) 4M x 64	(1) 1M x 64
112MB	(1) 8M x 64	(1) 4M x 64	(1) 2M x 64
128MB	(1) 16M x 64	None	None
128MB	(1) 8M x 64	(1) 4M x 64	(1) 4M x 64
128MB	(1) 8M x 64	(1) 8M x 64	None
136MB	(1) 16M x 64	(1) 1M x 64	None
136MB	(1) 8M x 64	(1) 8M x 64	(1) 1M x 64

144MB	(1) 16M x 64	(1) 1M x 64	(1) 1M x 64
144MB	(1) 16M x 64	(1) 2M x 64	None
144MB	(1) 8M x 64	(1) 8M x 64	(1) 2M x 64
152MB	(1) 16M x 64	(1) 2M x 64	(1) 1M x 64
160MB	(1) 16M x 64	(1) 2M x 64	(1) 2M x 64
160MB	(1) 16M x 64	(1) 4M x 64	None
160MB	(1) 8M x 64	(1) 8M x 64	(1) 4M x 64
168MB	(1) 16M x 64	(1) 4M x 64	(1) 1M x 64
176MB	(1) 16M x 64	(1) 4M x 64	(1) 2M x 64
192MB	(1) 16M x 64	(1) 4M x 64	(1) 4M x 64
192MB	(1) 16M x 64	(1) 8M x 64	None
192MB	(1) 8M x 64	(1) 8M x 64	(1) 8M x 64
200MB	(1) 16M x 64	(1) 8M x 64	(1) 1M x 64
208MB	(1) 16M x 64	(1) 8M x 64	(1) 2M x 64
224MB	(1) 16M x 64	(1) 8M x 64	(1) 4M x 64
256MB	(1) 16M x 64	(1) 8M x 64	(1) 8M x 64
384MB	(1) 16M x 64	(1) 16M x 64	(1) 16M x 64

Note: Board accepts SDRAM & PC100 memory.

CACHE CONFIGURATION

Note: 512KB cache is located on the Pentium II CPU.

VIDEO MEMORY CONFIGURATION

Note: Video memory is factory installed and is not configurable.

CPU SPEED SELECTION

CPU speed	Clock speed	Multiplier	SW1/2	SW1/3	SW1/4	SW1/5

233MHz	66MHz	3.5x	Off	Off	On	On
266MHz	66MHz	4x	Off	On	Off	Off
300MHz	66MHz	4.5x	Off	On	On	On
333MHz	66MHz	5x	Off	On	On	Off
366MHz	66MHz	5.5x	Off	On	On	On
350MHz	100MHz	3.5x	Off	Off	On	On
400MHz	100MHz	4x	Off	On	Off	Off
450MHz	100MHz	4.5x	Off	On	Off	On