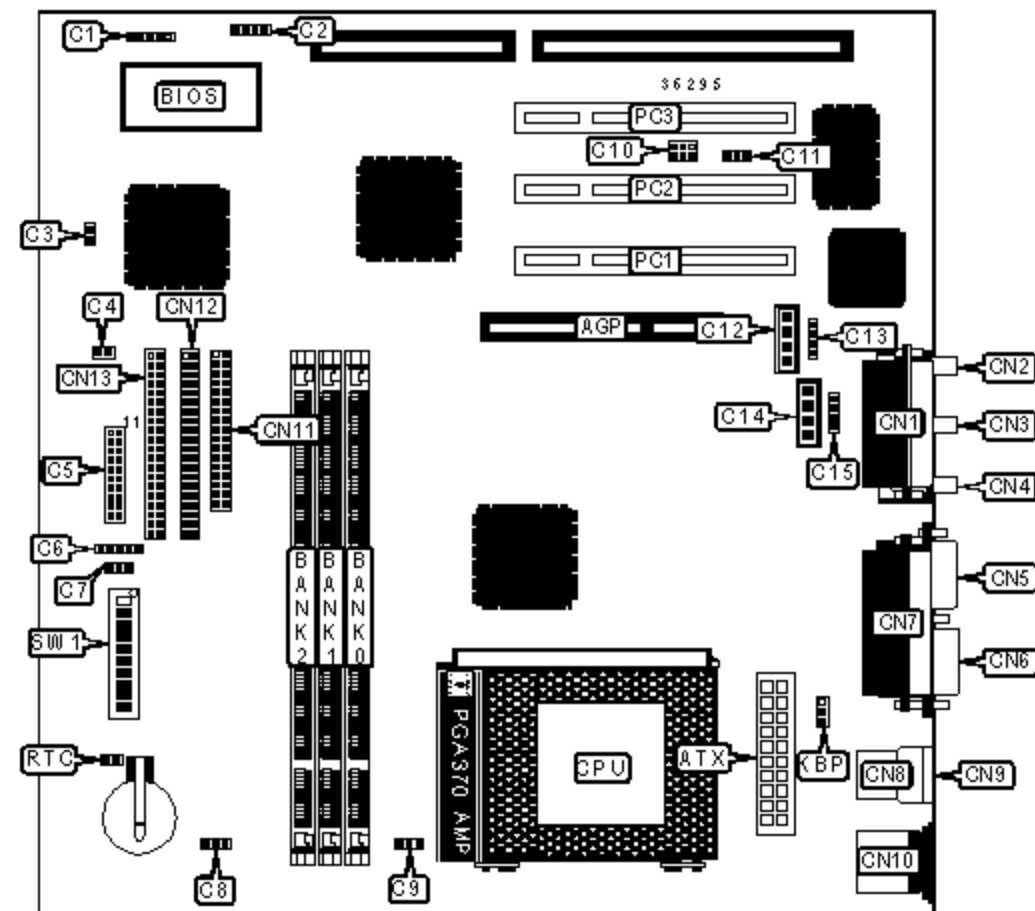


ASUS COMPUTER INTERNATIONAL

MEB-M (REV. 1.03)

Device Type	Mainboard
Processor	Celeron
Processor Speed	300/333/366/400MHz
Chip Set	Intel 440BX
Maximum Onboard Memory	768MB (SDRAM & PC100 supported)
Audio Chip Set	ESS
Cache	128KB (located on the Celeron CPU)
BIOS	Unidentified
Dimensions	305mm x 244mm
I/O Options	32-bit PCI slots (3), floppy drive interface, game/MIDI port, green PC connector, IDE interfaces (2), parallel port, PS/2 mouse port, serial ports (2), IR connector, USB connectors (2), ATX power connector, AGP slot, line in, line out, microphone in, audio in - CD-ROMs (2), SB-link connector, wake on LAN connector, wake on modem connector



CONNECTIONS

Purpose	Location	Purpose	Location
AGP slot	AGP	Audio in - CD-ROM	C12
ATX power connector	ATX	Modem connector	C13
SMB connector	C1	Audio in - CD-ROM	C14
Chassis intrusion connector	C2	Auxiliary in	C15
Wake on modem connector	C3	Game/MIDI port	CN1

IDE interface LED	C4	Microphone in	CN2
Turbo LED	C5/pins 2 & 3	Line in	CN3
Green PC connector	C5/pins 4 & 5	Line out	CN4
Soft off power supply	C5/pins 6 & 7	Serial port 2	CN5
Reset switch	C5/pins 9 & 10	Serial port 1	CN6
Power LED & keylock	C5/pins 11 - 15	Parallel port	CN7
Speaker	C5/pins 17 - 20	USB connector 1	CN8
IR connector	C6	USB connector 2	CN9
Chassis fan power	C7	PS/2 mouse port	CN10
Power fan power	C8	Floppy drive interface	CN11
CPU fan power	C9	IDE interface 2	CN12
SB-link connector	C10	IDE interface 1	CN13
Wake on LAN connector	C11	32-bit PCI slots	PC1 - PC3

USER CONFIGURABLE SETTINGS

Function		Label	Position
»	Keyboard power up disabled	KBP	Pins 1 & 2 closed
	Keyboard power up enabled	KBP	Pins 2 & 3 closed
»	CMOS memory normal operation	RTC	Open
	CMOS memory clear	RTC	Closed
	Voltage select normal	SW1/5	Off
	Voltage select high	SW1/5	On
	On board audio disabled	SW1/6	Off
	On board audio enabled	SW1/6	On

DIMM CONFIGURATION

Size	Bank 0	Bank 1	Bank 2
------	--------	--------	--------

8MB	(1) 1M x 64	None	None
16MB	(1) 2M x 64	None	None
16MB	(1) 1M x 64	(1) 1M x 64	None
24MB	(1) 2M x 64	(1) 1M x 64	None
24MB	(1) 1M x 64	(1) 1M x 64	(1) 1M x 64
32MB	(1) 4M x 64	None	None
32MB	(1) 2M x 64	(1) 1M x 64	(1) 1M x 64
32MB	(1) 2M x 64	(1) 2M x 64	None
40MB	(1) 4M x 64	(1) 1M x 64	None
40MB	(1) 2M x 64	(1) 2M x 64	(1) 1M x 64

DIMM CONFIGURATION (CON'T)

Size	Bank 0	Bank 1	Bank 2
48MB	(1) 4M x 64	(1) 1M x 64	(1) 1M x 64
48MB	(1) 4M x 64	(1) 2M x 64	None
48MB	(1) 2M x 64	(1) 2M x 64	(1) 2M x 64
56MB	(1) 4M x 64	(1) 2M x 64	(1) 1M x 64
64MB	(1) 8M x 64	None	None
64MB	(1) 4M x 64	(1) 2M x 64	(1) 2M x 64
64MB	(1) 4M x 64	(1) 4M x 64	None
72MB	(1) 4M x 64	(1) 4M x 64	(1) 1M x 64
80MB	(1) 8M x 64	(1) 1M x 64	(1) 1M x 64
80MB	(1) 8M x 64	(1) 2M x 64	None
80MB	(1) 4M x 64	(1) 4M x 64	(1) 2M x 64
88MB	(1) 8M x 64	(1) 2M x 64	(1) 1M x 64
96MB	(1) 8M x 64	(1) 2M x 64	(1) 2M x 64
128MB	(1) 8M x 64	(1) 4M x 64	(1) 4M x 64

128MB	(1) 8M x 64	(1) 8M x 64	None
144MB	(1) 8M x 64	(1) 8M x 64	(1) 2M x 64
152MB	(1) 16M x 64	(1) 2M x 64	(1) 1M x 64
160MB	(1) 16M x 64	(1) 2M x 64	(1) 2M x 64
160MB	(1) 16M x 64	(1) 4M x 64	None
160MB	(1) 8M x 64	(1) 8M x 64	(1) 4M x 64
168MB	(1) 16M x 64	(1) 4M x 64	(1) 1M x 64
176MB	(1) 16M x 64	(1) 4M x 64	(1) 2M x 64
192MB	(1) 16M x 64	(1) 4M x 64	(1) 4M x 64
192MB	(1) 16M x 64	(1) 8M x 64	None
192MB	(1) 8M x 64	(1) 8M x 64	(1) 8M x 64
256MB	(1) 32M x 64	None	None
256MB	(1) 16M x 64	(1) 8M x 64	(1) 8M x 64
288MB	(1) 32M x 64	(1) 2M x 64	(1) 2M x 64
288MB	(1) 32M x 64	(1) 4M x 64	None
320MB	(1) 32M x 64	(1) 4M x 64	(1) 4M x 64
320MB	(1) 32M x 64	(1) 8M x 64	None
384MB	(1) 32M x 64	(1) 8M x 64	(1) 8M x 64
384MB	(1) 32M x 64	(1) 16M x 64	None
384MB	(1) 16M x 64	(1) 16M x 64	(1) 16M x 64
512MB	(1) 32M x 64	(1) 16M x 64	(1) 16M x 64
512MB	(1) 32M x 64	(1) 32M x 64	None
768MB	(1) 32M x 64	(1) 32M x 64	(1) 32M x 64

Note: Board accepts SDRAM & PC100 memory.

CACHE CONFIGURATION

Note: 128KB cache is located on the Celeron 300A & 333 CPU.

CPU SPEED SELECTION

CPU speed	Clock speed	Multiplier	SW1/1	SW1/2	SW1/3	SW1/4
300MHz	66MHz	4.5x	Off	Off	On	On
333MHz	66MHz	5x	Off	Off	On	On
366MHz	66MHz	5.5x	Off	Off	On	On
400MHz	66MHz	6x	Off	Off	On	On

CPU SPEED SELECTION (CON'T)

CPU speed	Clock speed	Multiplier	SW1/7	SW1/8	SW1/9	SW1/10
300MHz	66MHz	4.5x	On	On	On	Off
333MHz	66MHz	5x	Off	Off	Off	On
366MHz	66MHz	5.5x	On	Off	Off	On
400MHz	66MHz	6x	Off	On	Off	On