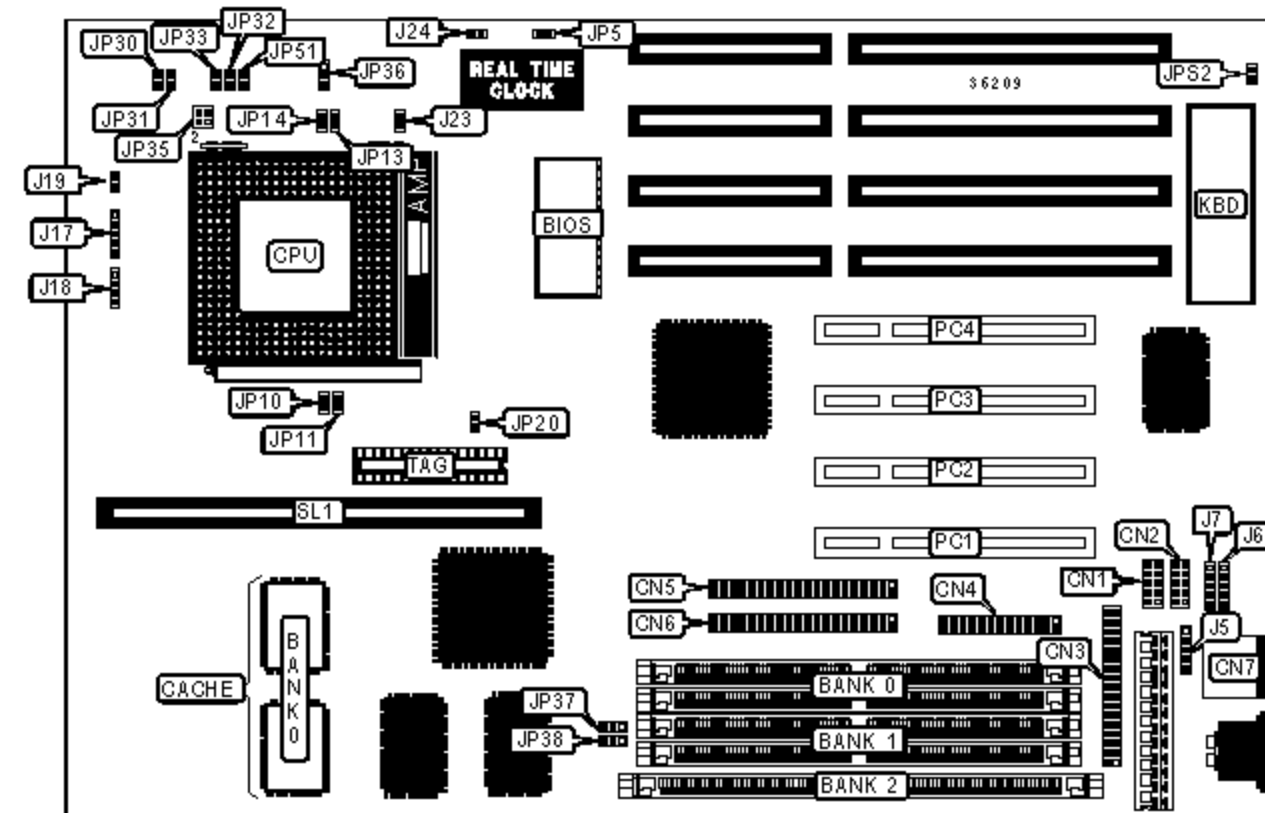


# SURIA COMPUTER CORPORATION

## SC-5TVX

|                               |  |
|-------------------------------|--|
| <b>Processor</b>              | CX 6x86/CX 6x86L/AM K5/Pentium/Pentium MMX   |
| <b>Processor Speed</b>        | 75/90/100/120/133/150/166/180/200MHz   |
| <b>Chip Set</b>               | Intel  |
| <b>Maximum Onboard Memory</b> | 128MB (EDO supported)  |
| <b>Cache</b>                  | 256/512KB  |
| <b>BIOS</b>                   | Award  |
| <b>Dimensions</b>             | 330mm x 218mm  |
| <b>I/O Options</b>            | 32-bit PCI slots (4), floppy drive interface, green PC connector, IDE interfaces (2), parallel port, PS/2 mouse port, serial ports (2), USB connectors (2), IR connector, cache slot |
| <b>NPU Options</b>            | None   |



### CONNECTIONS

| Purpose                | Location | Purpose             | Location |
|------------------------|----------|---------------------|----------|
| Serial port 2          | CN1      | USB connector 2     | J7       |
| Serial port 1          | CN2      | Power LED & keylock | J17      |
| Floppy drive interface | CN3      | Speaker             | J18      |
| Parallel port          | CN4      | Reset switch        | J19      |
| IDE interface 2        | CN5      | Green PC connector  | J23      |
| IDE interface 1        | CN6      | IDE interface LED   | J24      |
| PS/2 mouse port        | CN7      | 32-bit PCI slots    |          |

|                 |    |            |           |
|-----------------|----|------------|-----------|
|                 |    |            | PC1 - PC4 |
| IR connector    | J5 | Cache slot | SL1       |
| USB connector 1 | J6 |            |           |

| USER CONFIGURABLE SETTINGS |                                   |       |                   |
|----------------------------|-----------------------------------|-------|-------------------|
| Function                   |                                   | Label | Position          |
| »                          | CMOS memory normal operation      | JP5   | Open              |
|                            | CMOS memory clear                 | JP5   | Closed            |
| »                          | Factory configured - do not alter | JP36  | Pins 2 & 3 closed |
| »                          | PS/2 mouse disabled               | JPS2  | Open              |
|                            | PS/2 mouse enabled                | JPS2  | Closed            |

| DIMM CONFIGURATION |               |               |             |
|--------------------|---------------|---------------|-------------|
| Size               | Bank 0        | Bank 1        | Bank 2      |
| 4MB                | (2) 512K x 36 | None          | None        |
| 8MB                | (2) 1M x 36   | None          | None        |
| 8MB                | (2) 512K x 36 | (2) 512K x 36 | None        |
| 12MB               | (2) 1M x 36   | (2) 512K x 36 | None        |
| 12MB               | None          | (2) 512K x 36 | (1) 1M x 64 |
| 16MB               | (2) 2M x 36   | None          | None        |
| 16MB               | (2) 1M x 36   | (2) 1M x 36   | None        |
| 16MB               | None          | (2) 1M x 36   | (1) 1M x 64 |
| 20MB               | (2) 2M x 36   | (2) 512K x 36 | None        |
| 20MB               | None          | (2) 512K x 36 | (1) 2M x 64 |
| 24MB               | None          | (2) 1M x 36   | (1) 2M x 64 |
| 24MB               | None          | (2) 2M x 36   | (1) 1M x 64 |
| 24MB               | (2) 1M x 36   | (2) 2M x 36   | None        |

|      |             |               |             |
|------|-------------|---------------|-------------|
| 32MB | None        | (2) 2M x 36   | (1) 2M x 64 |
| 32MB | (2) 4M x 36 | None          | None        |
| 32MB | (2) 2M x 36 | (2) 2M x 36   | None        |
| 36MB | None        | (2) 512K x 36 | (1) 4M x 64 |
| 36MB | (2) 4M x 36 | (2) 512K x 36 | None        |
| 40MB | None        | (2) 1M x 36   | (1) 4M x 64 |
| 40MB | None        | (2) 4M x 36   | (1) 1M x 64 |
| 40MB | (2) 1M x 36 | (2) 4M x 36   | None        |
| 48MB | None        | (2) 4M x 36   | (1) 2M x 64 |

| <b>DIMM CONFIGURATION (CON'T)</b> |               |               |               |
|-----------------------------------|---------------|---------------|---------------|
| <b>Size</b>                       | <b>Bank 0</b> | <b>Bank 1</b> | <b>Bank 2</b> |
| 48MB                              | None          | (2) 2M x 36   | (1) 4M x 64   |
| 48MB                              | (2) 4M x 36   | (2) 2M x 36   | None          |
| 64MB                              | None          | (2) 4M x 36   | (1) 4M x 64   |
| 64MB                              | (2) 8M x 36   | None          | None          |
| 64MB                              | (2) 4M x 36   | (2) 4M x 36   | None          |
| 68MB                              | None          | (2) 512K x 36 | (1) 8M x 64   |
| 68MB                              | (2) 8M x 36   | (2) 512K x 36 | None          |
| 72MB                              | None          | (2) 1M x 36   | (1) 8M x 64   |
| 72MB                              | None          | (2) 8M x 36   | (1) 1M x 64   |
| 72MB                              | (2) 1M x 36   | (2) 8M x 36   | None          |
| 80MB                              | None          | (2) 8M x 36   | (1) 2M x 64   |
| 80MB                              | None          | (2) 2M x 36   | (1) 8M x 64   |
| 80MB                              | (2) 8M x 36   | (2) 2M x 36   | None          |
| 96MB                              | None          | (2) 8M x 36   | (1) 4M x 64   |
| 96MB                              | None          | (2) 4M x 36   | (1) 8M x 64   |
| 96MB                              | (2) 4M x 36   | (2) 8M x 36   | None          |

|   |             |             |             |
|---|-------------|-------------|-------------|
| 128MB   | None        | (2) 8M x 36 | (1) 8M x 64 |
| 128MB   | (2) 8M x 36 | (2) 8M x 36 | None        |
| Note: Board accepts EDO memory. Board also accepts x 32 SIMMs. Banks are interchangeable. |             |             |             |

| DIMM VOLTAGE CONFIGURATION |      |                   |                   |
|----------------------------|------|-------------------|-------------------|
| Voltage                    |      | JP37              | JP38              |
| »                          | 3.3v | Pins 2 & 3 closed | Pins 2 & 3 closed |
|                            | 5v   | Pins 1 & 2 closed | Pins 1 & 2 closed |

| CACHE CONFIGURATION |              |                        |             |
|---------------------|--------------|------------------------|-------------|
| Size                | Bank 0       | SL1                    | TAG         |
| 256KB               | None         | 256KB module installed | (1) 16K x 8 |
| 256KB               | (2) 32K x 32 | None installed         | (1) 16K x 8 |
| 512KB               | (2) 32K x 32 | 256KB module installed | (1) 16K x 8 |

| CACHE JUMPER CONFIGURATION                         |        |
|--|--------|
| Size   | JP20   |
| 256KB  | Open   |
| 512KB  | Closed |
| Note: JP20 may be labeled as JP7 on some versions. |        |

| CPU SPEED SELECTION (CYRIX) |             |            |        |        |        |      |
|-----------------------------|-------------|------------|--------|--------|--------|------|
| CPU speed                   | Clock speed | Multiplier | JP10   | JP11   | JP13   | JP14 |
| 120MHz                      | 50MHz       | 2x         | Closed | Closed | Closed | Open |
| 133MHz                      | 55MHz       | 2x         | Open   | Open   | Closed | Open |
| 150MHz                      | 60MHz       | 2x         | Open   | Closed | Closed | Open |
| 166MHz                      | 66MHz       | 2x         | Closed | Open   | Closed | Open |

**CPU SPEED SELECTION (AMD)**

| CPU speed | Clock speed | Multiplier | JP10   | JP11   | JP13   | JP14 |
|-----------|-------------|------------|--------|--------|--------|------|
| 75MHz     | 50MHz       | 1.5x       | Closed | Closed | Open   | Open |
| 90MHz     | 55MHz       | 1.5x       | Open   | Open   | Open   | Open |
| 100MHz    | 55MHz       | 1.5x       | Open   | Open   | Open   | Open |
| 90MHz     | 60MHz       | 1.5x       | Open   | Closed | Open   | Open |
| 100MHz    | 66MHz       | 1.5x       | Closed | Open   | Open   | Open |
| 120MHz    | 60MHz       | 1.5x       | Open   | Closed | Open   | Open |
| 133MHz    | 66MHz       | 1.5x       | Closed | Open   | Open   | Open |
| 150MHz    | 60MHz       | 2x         | Open   | Closed | Closed | Open |
| 166MHz    | 66MHz       | 2x         | Closed | Open   | Closed | Open |

**CPU SPEED SELECTION (INTEL)**

| CPU speed | Clock speed | Multiplier | JP10   | JP11   | JP13   | JP14   |
|-----------|-------------|------------|--------|--------|--------|--------|
| 75MHz     | 50MHz       | 1.5x       | Closed | Closed | Open   | Open   |
| 90MHz     | 60MHz       | 1.5x       | Open   | Closed | Open   | Open   |
| 100MHz    | 50MHz       | 2x         | Closed | Closed | Closed | Open   |
| 100MHz    | 66MHz       | 1.5x       | Closed | Open   | Open   | Open   |
| 120MHz    | 60MHz       | 2x         | Open   | Closed | Closed | Open   |
| 133MHz    | 66MHz       | 2x         | Closed | Open   | Closed | Open   |
| 150MHz    | 60MHz       | 2.5x       | Open   | Closed | Closed | Closed |
| 166MHz    | 66MHz       | 2.5x       | Closed | Open   | Closed | Closed |
| 180MHz    | 60MHz       | 3x         | Open   | Closed | Open   | Closed |
| 200MHz    | 66MHz       | 3x         | Closed | Open   | Open   | Closed |

**CPU VOLTAGE SELECTION**

| Voltage |                       | JP30   | JP31   | JP35         |
|---------|-----------------------|--------|--------|--------------|
| »       | 3.3V (Standard or VR) | Closed | Open   | 1 & 2, 3 & 4 |
|         | 3.45V - 3.6V (VRE)    | Open   | Closed | 1 & 2, 3 & 4 |

Note: Pins designated are in the closed position

**DUAL CPU VOLTAGE SELECTION**

| Voltage     | JP32   | JP33   | JP35 | JP51   |
|-------------|--------|--------|------|--------|
| 2.5V        | Open   | Open   | Open | Closed |
| 2.7V - 2.8V | Closed | Open   | Open | Open   |
| 2.9V        | Open   | Closed | Open | Open   |