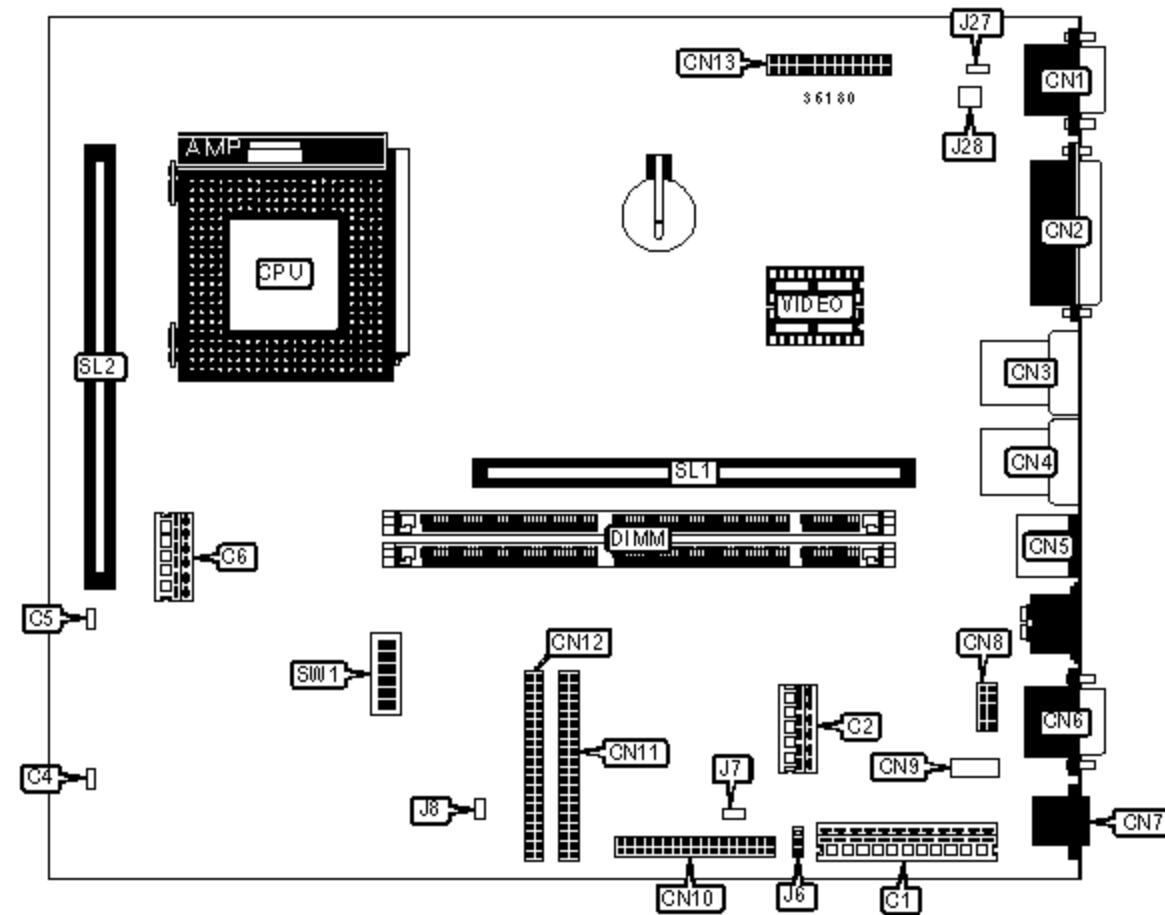


# IBM CORPORATION

## PC300 (TYPE 6282, 6284)

<b>Device Type</b>	Mainboard
<b>Processor</b>	Pentium
<b>Processor Speed</b>	75/90/100/120/133/150/166/200/233MHz
<b>Chip Set</b>	Unidentified
<b>Video Chip Set</b>	Unidentified
<b>Maximum Onboard Memory</b>	128MB (EDO & SDRAM supported)
<b>Maximum Video Memory</b>	Unidentified
<b>Cache</b>	256/512KB
<b>BIOS</b>	Unidentified
<b>Dimensions</b>	420mm x 440mm
<b>I/O Options</b>	Ethernet 10BaseT connector, AUI connector, floppy drive interface, IDE interfaces (2), parallel port, PS/2 mouse port, serial ports (2), VGA feature connector, VGA port, riser slot, cache slot, USB connectors (2)
<b>NPU Options</b>	None



### CONNECTIONS

Purpose	Location	Purpose	Location
5v power	C1	Serial port 2	CN8
5v auxiliary power	C2	AUI connector	CN9
LAN LED	C4	Floppy drive interface	CN10
Chassis fan power	C5	IDE interface 1	CN11

3.3v power	C6	IDE interface 2	CN12
VGA port	CN1	VGA feature connector	CN13
Parallel port	CN2	Power switch connector	J7
USB connector 2	CN3	Power LED/IDE interface LED	J8
USB connector 1	CN4	Wake on modem connector	J27
PS/2 mouse port	CN5	Wake on LAN connector	J28
Serial port 1	CN6	Riser slot	SL1
Ethernet 10BaseT connector	CN7	Cache slot	SL2

### USER CONFIGURABLE SETTINGS

Function		Label	Position
»	CMOS memory normal operation	J6	Pins 1 & 2 closed
	CMOS memory clear	J6	Pins 2 & 3 closed
»	Factory configured - do not alter	SW1/5	Off
»	Floppy drive normal operation	SW1/6	Off
	Floppy drive read only	SW1/6	On

### DIMM CONFIGURATION

Size	Bank 0	Bank 1
8MB	(1) 1M x 64	None
16MB	(1) 2M x 64	None
16MB	(1) 1M x 64	(1) 1M x 64
24MB	(1) 2M x 64	(1) 1M x 64
32MB	(1) 4M x 64	None
32MB	(1) 2M x 64	(1) 2M x 64
40MB	(1) 4M x 64	(1) 1M x 64
48MB	(1) 4M x 64	(1) 2M x 64

64MB	(1) 8M x 64	None
64MB	(1) 4M x 64	(1) 4M x 64
72MB	(1) 8M x 64	(1) 1M x 64
80MB	(1) 8M x 64	(1) 2M x 64
96MB	(1) 8M x 64	(1) 4M x 64
128MB	(1) 8M x 64	(1) 8M x 64
Note: Board accepts EDO & SDRAM memory.		

CACHE CONFIGURATION	
Size	SL2
256KB	256KB module installed
512KB	512KB module installed

VIDEO MEMORY CONFIGURATION
Note: The size location of the video memory is unidentified.

CPU SPEED SELECTION						
CPU speed	Clock speed	Multiplier	SW1/1	SW1/2	SW1/3	SW1/4
75MHz	50MHz	1.5x	Off	Off	On	On
90MHz	60MHz	1.5x	Off	Off	On	Off
100MHz	66MHz	1.5x	Off	Off	Off	On
120MHz	60MHz	2x	On	Off	On	Off
133MHz	66MHz	2x	On	Off	Off	On
150MHz	60MHz	2.5x	On	On	On	Off
166MHz	66MHz	2.5x	On	On	Off	On
200MHz	66MHz	3x	Off	On	Off	On
233MHz	66MHz	3.5x	Off	Off	Off	On

