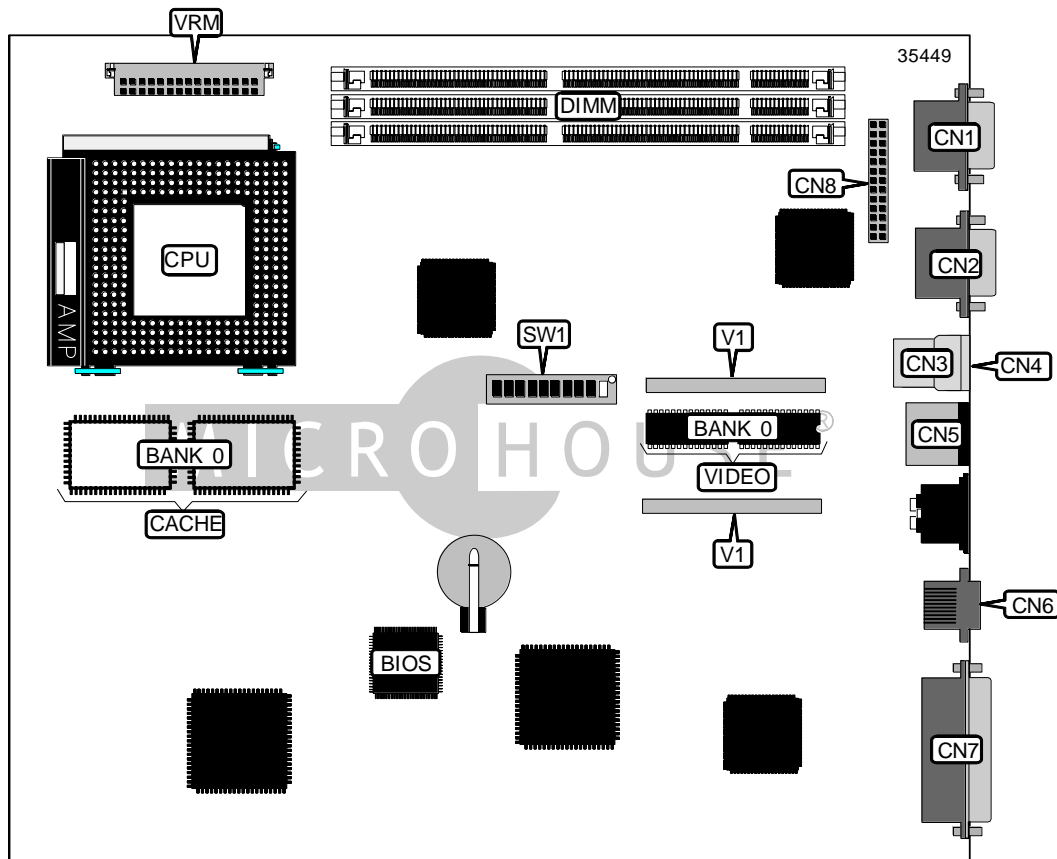


DIGITAL EQUIPMENT CORPORATION VENTURIS FX-2

| | |
|-------------------------------|---|
| Device Type | Mainboard |
| Processor | Pentium |
| Processor Speed | 90/100/120/133/150/166/180/200MHz |
| Chip Set | Unidentified |
| Video Chip Set | S3 |
| Maximum Onboard Memory | 256MB (SDRAM supported) |
| Maximum Video Memory | 4MB |
| Cache | 256/512KB |
| BIOS | Unidentified |
| Dimensions | 254mm x 218mm |
| I/O Options | Ethernet 10/100BaseT connector, parallel port, PS/2 mouse port, serial port, VGA feature connector, VGA port, VRM connector, USB connectors (2) |
| NPU Options | None |



Continued on next page. . .

DIGITAL EQUIPMENT CORPORATION
VENTURIS FX-2

... continued from previous page

| CONNECTIONS | | | |
|-----------------|----------|--------------------------------|----------|
| Purpose | Location | Purpose | Location |
| Serial port | CN1 | Ethernet 10/100BaseT connector | CN6 |
| VGA port | CN2 | Parallel port | CN7 |
| USB connector | CN3 | VGA feature connector | CN8 |
| USB connector | CN4 | VRM connector | VRM |
| PS/2 mouse port | CN5 | | |

| USER CONFIGURABLE SETTINGS | | |
|-------------------------------------|-------|----------|
| Function | Label | Position |
| í Password normal operation | SW1/2 | Off |
| Password clear | SW1/2 | On |
| í BIOS normal operation | SW1/3 | Off |
| BIOS recovery mode | SW1/3 | On |
| í CMOS memory normal operation | SW1/4 | Off |
| CMOS memory clear | SW1/4 | On |
| í BIOS write disabled | SW1/5 | Off |
| BIOS write enabled | SW1/5 | On |
| í Factory configured - do not alter | SW1/6 | Off |

| DIMM CONFIGURATION | | | |
|--------------------|--------------|-------------|-------------|
| Size | Bank 0 | Bank 1 | Bank 2 |
| 8MB | (1) 1M x 64 | None | None |
| 16MB | (1) 1M x 64 | (1) 1M x 64 | None |
| 16MB | (1) 2M x 64 | None | None |
| 24MB | (1) 1M x 64 | (1) 1M x 64 | (1) 1M x 64 |
| 32MB | (1) 2M x 64 | (1) 2M x 64 | None |
| 32MB | (1) 4M x 64 | None | None |
| 48MB | (1) 2M x 64 | (1) 2M x 64 | (1) 2M x 64 |
| 64MB | (1) 4M x 64 | (1) 4M x 64 | None |
| 64MB | (1) 8M x 64 | None | None |
| 96MB | (1) 4M x 64 | (1) 4M x 64 | (1) 4M x 64 |
| 128MB | (1) 8M x 64 | (1) 8M x 64 | None |
| 128MB | (1) 16M x 64 | None | None |
| 164MB | (1) 16M x 64 | (1) 1M x 64 | None |
| 144MB | (1) 16M x 64 | (1) 1M x 64 | (1) 1M x 64 |
| 144MB | (1) 16M x 64 | (1) 2M x 64 | None |
| 160MB | (1) 16M x 64 | (1) 2M x 64 | (1) 2M x 64 |
| 160MB | (1) 16M x 64 | (1) 4M x 64 | None |

Continued on next page...

DIGITAL EQUIPMENT CORPORATION
VENTURIS FX-2

... continued from previous page

| DIMM CONFIGURATION (CON'T) | | | |
|----------------------------|--------------|--------------|-------------|
| Size | Bank 0 | Bank 1 | Bank 2 |
| 192MB | (1) 16M x 64 | (1) 4M x 64 | (1) 4M x 64 |
| 192MB | (1) 16M x 64 | (1) 8M x 64 | None |
| 192MB | (1) 8M x 64 | (1) 8M x 64 | (1) 8M x 64 |
| 256MB | (1) 16M x 64 | (1) 8M x 64 | (1) 8M x 64 |
| 256MB | (1) 16M x 64 | (1) 16M x 64 | None |

Note: Board accepts SDRAM memory.

| CACHE CONFIGURATION | |
|---------------------|--------------|
| Size | Bank 0 |
| 256KB | (2) 32K x 32 |
| 512KB | (2) 64K x 32 |

| VIDEO MEMORY CONFIGURATION | | |
|----------------------------|---------------|----------------------|
| Size | Bank 0 | V1 |
| 2MB | (2) 512K x 16 | Not installed |
| 4MB | (2) 512K x 16 | 2MB module installed |

| CPU SPEED SELECTION | | | | | |
|---------------------|-------------|------------|-------|-------|-------|
| CPU speed | Clock speed | Multiplier | SW1/1 | SW1/7 | SW1/8 |
| 90MHz | 60MHz | 1.5x | Off | Off | Off |
| 100MHz | 66MHz | 1.5x | On | Off | Off |
| 120MHz | 60MHz | 2x | Off | On | Off |
| 133MHz | 66MHz | 2x | On | On | Off |
| 150MHz | 60MHz | 2.5x | Off | On | On |
| 166MHz | 66MHz | 2.5x | On | On | On |
| 180MHz | 60MHz | 3x | Off | Off | On |
| 200MHz | 66MHz | 3x | On | Off | On |