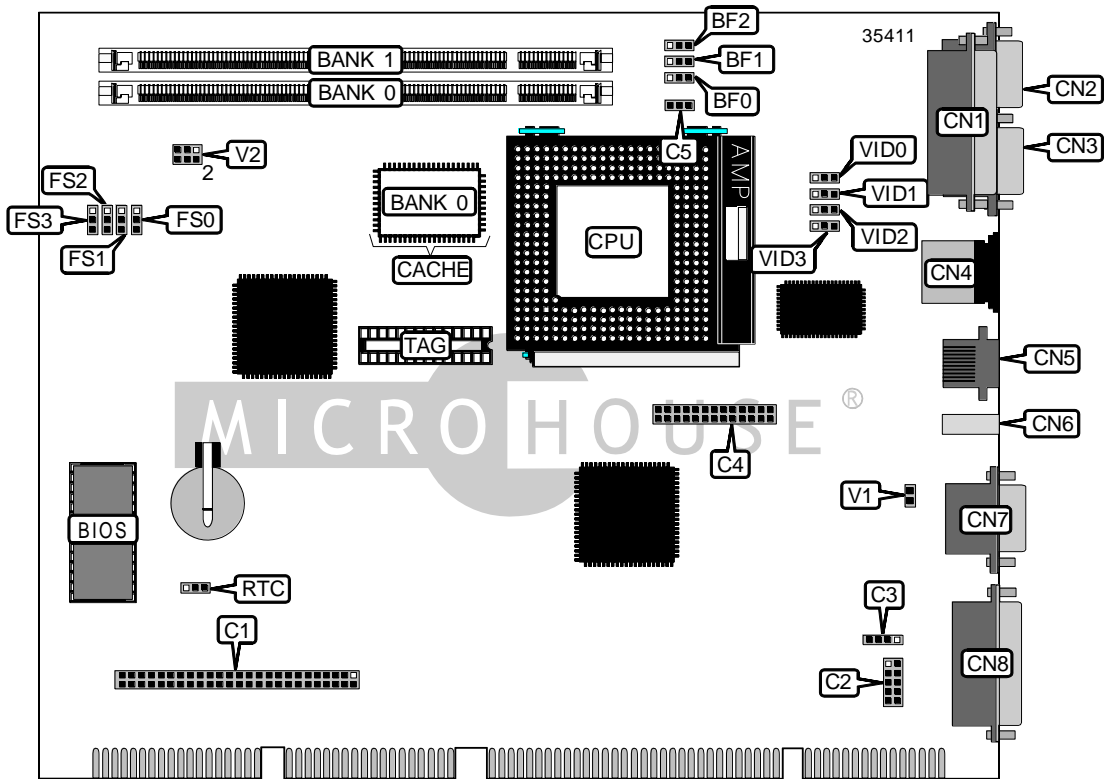


# ASUS COMPUTER INTERNATIONAL

## SP98-N (REV. 1.02)

<b>Device Type</b>	Mainboard
<b>Processor</b>	CX 6X86/IBM 6X86/CX 6X86L/IBM 6X86L/CX 686MX/IBM 6X86MX/ AM K5/AM K6/Pentium/Pentium MMX
<b>Processor Speed</b>	75/90/100/120/133/150/166/200/233MHz
<b>Chip Set</b>	SIS
<b>Video Chip Set</b>	None
<b>Maximum Onboard Memory</b>	256MB (EDO & SDRAM supported)
<b>Maximum Video Memory</b>	None
<b>Cache</b>	512KB
<b>BIOS</b>	Unidentified
<b>Dimensions</b>	254mm x 218mm
<b>I/O Options</b>	Ethernet 10BaseT connector, floppy drive interface, game/MIDI port, parallel port, PS/2 mouse port, serial ports (2), VGA feature connector, VGA port
<b>NPU Options</b>	None



Continued on next page...

ASUS COMPUTER INTERNATIONAL  
 SP98-N (REV. 1.02)

... continued from previous page

CONNECTIONS			
Purpose	Location	Purpose	Location
CD-ROM connector	C1	Serial port 2	CN3
Audio connector	C2	PS/2 mouse port	CN4
Speaker	C3	Ethernet 10BaseT connector	CN5
VGA feature connector	C4	LAN LEDs	CN6
CPU fan power	C5	VGA port	CN7
Parallel port	CN1	Game/MIDI port	CN8
Serial port 1	CN2		

USER CONFIGURABLE SETTINGS		
Function	Label	Position
PCI frequency select synchronous	FS3	Pins 1 & 2 closed
PCI frequency select asynchronous	FS3	Pins 2 & 3 closed
CMOS memory normal operation	RTC	Pins 1 & 2 closed
CMOS memory clear	RTC	Pins 2 & 3 closed

DIMM CONFIGURATION		
Size	Bank 0	Bank 1
8MB	(1) 1M x 64	None
16MB	(1) 2M x 64	None
16MB	(1) 1M x 64	(1) 1M x 64
24MB	(1) 2M x 64	(1) 1M x 64
32MB	(1) 4M x 64	None
32MB	(1) 2M x 64	(1) 2M x 64
40MB	(1) 4M x 64	(1) 1M x 64
48MB	(1) 4M x 64	(1) 2M x 64
64MB	(1) 8M x 64	None
64MB	(1) 4M x 64	(1) 4M x 64
72MB	(1) 8M x 64	(1) 1M x 64
80MB	(1) 8M x 64	(1) 2M x 64
96MB	(1) 8M x 64	(1) 4M x 64
128MB	(1) 16M x 64	None
128MB	(1) 8M x 64	(1) 8M x 64
136MB	(1) 16M x 64	(1) 1M x 64
144MB	(1) 16M x 64	(1) 2M x 64
160MB	(1) 16M x 64	(1) 4M x 64
192MB	(1) 16M x 64	(1) 8M x 64
256MB	(1) 16M x 64	(1) 16M x 64

Note: Board accepts SDRAM memory.

Continued on next page...

ASUS COMPUTER INTERNATIONAL  
SP98-N (REV. 1.02)

... continued from previous page

CACHE CONFIGURATION		
Size	Bank 0	TAG
512KB	(1) 64K x 64	Unidentified

CPU SPEED SELECTION (CX 6X86)								
CPU speed	Clock speed	Multiplier	BF0	BF1	BF2	FS0	FS1	FS2
166MHz	66MHz	2x	1 & 2	1 & 2	2 & 3	2 & 3	1 & 2	2 & 3
Note: Pins designated should be in the closed position.								

CPU SPEED SELECTION (IBM 6X86)								
CPU speed	Clock speed	Multiplier	BF0	BF1	BF2	FS0	FS1	FS2
166MHz	66MHz	2x	1 & 2	1 & 2	2 & 3	2 & 3	1 & 2	2 & 3
Note: Pins designated should be in the closed position.								

CPU SPEED SELECTION (CX 6X86L)								
CPU speed	Clock speed	Multiplier	BF0	BF1	BF2	FS0	FS1	FS2
166MHz	66MHz	2x	1 & 2	1 & 2	2 & 3	2 & 3	1 & 2	2 & 3
200MHz	75MHz	2x	1 & 2	1 & 2	2 & 3	1 & 2	2 & 3	1 & 2
Note: Pins designated should be in the closed position.								

CPU SPEED SELECTION (IBM 6X86L)								
CPU speed	Clock speed	Multiplier	BF0	BF1	BF2	FS0	FS1	FS2
166MHz	66MHz	2x	1 & 2	1 & 2	2 & 3	2 & 3	1 & 2	2 & 3
200MHz	75MHz	2x	1 & 2	1 & 2	2 & 3	1 & 2	2 & 3	1 & 2
Note: Pins designated should be in the closed position.								

CPU SPEED SELECTION (CX 6X86MX)								
CPU speed	Clock speed	Multiplier	BF0	BF1	BF2	FS0	FS1	FS2
166MHz	60MHz	2.5x	1 & 2	2 & 3	2 & 3	1 & 2	2 & 3	2 & 3
200MHz	66MHz	2.5x	1 & 2	2 & 3	2 & 3	2 & 3	1 & 2	2 & 3
233MHz	66MHz	3x	1 & 2	2 & 3	1 & 2	2 & 3	1 & 2	2 & 3
Note: Pins designated should be in the closed position.								

CPU SPEED SELECTION (IBM 6X86MX)								
CPU speed	Clock speed	Multiplier	BF0	BF1	BF2	FS0	FS1	FS2
166MHz	60MHz	2.5x	1 & 2	2 & 3	2 & 3	1 & 2	2 & 3	2 & 3
200MHz	66MHz	2.5x	1 & 2	2 & 3	2 & 3	2 & 3	1 & 2	2 & 3
233MHz	66MHz	3x	1 & 2	2 & 3	1 & 2	2 & 3	1 & 2	2 & 3
Note: Pins designated should be in the closed position.								

Continued on next page...

ASUS COMPUTER INTERNATIONAL  
SP98-N (REV. 1.02)

... continued from previous page

CPU SPEED SELECTION (AM K5)								
CPU speed	Clock speed	Multiplier	BF0	BF1	BF2	FS0	FS1	FS2
75MHz	50MHz	1.5x	1 & 2	1 & 2	1 & 2	2 & 3	2 & 3	2 & 3
90MHz	60MHz	1.5x	1 & 2	1 & 2	1 & 2	1 & 2	2 & 3	2 & 3
100MHz	66MHz	1.5x	1 & 2	1 & 2	1 & 2	2 & 3	1 & 2	2 & 3
120MHz	60MHz	1.5x	1 & 2	1 & 2	1 & 2	1 & 2	2 & 3	2 & 3
133MHz	66MHz	1.5x	1 & 2	1 & 2	1 & 2	2 & 3	1 & 2	2 & 3

Note: Pins designated should be in the closed position.

CPU SPEED SELECTION (AM K6)								
CPU speed	Clock speed	Multiplier	BF0	BF1	BF2	FS0	FS1	FS2
166MHz	66MHz	2.5x	1 & 2	2 & 3	2 & 3	2 & 3	1 & 2	2 & 3
200MHz	66MHz	3x	1 & 2	2 & 3	1 & 2	2 & 3	1 & 2	2 & 3
233MHz	66MHz	3.5x	1 & 2	1 & 2	1 & 2	2 & 3	1 & 2	2 & 3

Note: Pins designated should be in the closed position.

CPU SPEED SELECTION (INTEL)								
CPU speed	Clock speed	Multiplier	BF0	BF1	BF2	FS0	FS1	FS2
75MHz	50MHz	1.5x	1 & 2	1 & 2	1 & 2	2 & 3	2 & 3	2 & 3
90MHz	60MHz	1.5x	1 & 2	1 & 2	1 & 2	1 & 2	2 & 3	2 & 3
100MHz	66MHz	1.5x	1 & 2	1 & 2	1 & 2	2 & 3	1 & 2	2 & 3
120MHz	60MHz	2x	1 & 2	1 & 2	2 & 3	1 & 2	2 & 3	2 & 3
133MHz	66MHz	2x	1 & 2	1 & 2	2 & 3	2 & 3	1 & 2	2 & 3
150MHz	60MHz	2.5x	1 & 2	2 & 3	2 & 3	1 & 2	2 & 3	2 & 3
166MHz	66MHz	2.5x	1 & 2	2 & 3	2 & 3	2 & 3	1 & 2	2 & 3

Note: Pins designated should be in the closed position.

CPU SPEED SELECTION (INTEL MMX)								
CPU speed	Clock speed	Multiplier	BF0	BF1	BF2	FS0	FS1	FS2
166MHz	66MHz	2.5x	1 & 2	2 & 3	2 & 3	2 & 3	1 & 2	2 & 3
200MHz	66MHz	3x	1 & 2	2 & 3	1 & 2	2 & 3	1 & 2	2 & 3
233MHz	66MHz	3.5x	1 & 2	1 & 2	1 & 2	2 & 3	1 & 2	2 & 3

Note: Pins designated should be in the closed position.

CPU VOLTAGE SELECTION (SINGLE)				
Voltage	VID0	VID1	VID2	VID3
3.4v	Pins 2 & 3 closed	Pins 1 & 2 closed	Pins 1 & 2 closed	Pins 1 & 2 closed
3.5v	Pins 1 & 2 closed	Pins 1 & 2 closed	Pins 1 & 2 closed	Pins 1 & 2 closed

Continued on next page...

ASUS COMPUTER INTERNATIONAL  
 SP98-N (REV. 1.02)

... continued from previous page

CPU VOLTAGE SELECTION (DUAL)				
Voltage	VID0	VID1	VID2	VID3
2.1v	Pins 1 & 2 closed	Pins 2 & 3 closed	Pins 2 & 3 closed	Pins 2 & 3 closed
2.8v	Pins 2 & 3 closed	Pins 2 & 3 closed	Pins 2 & 3 closed	Pins 1 & 2 closed
2.9v	Pins 1 & 2 closed	Pins 2 & 3 closed	Pins 2 & 3 closed	Pins 1 & 2 closed
3.2v	Pins 2 & 3 closed	Pins 2 & 3 closed	Pins 1 & 2 closed	Pins 1 & 2 closed
3.3v	Pins 1 & 2 closed	Pins 2 & 3 closed	Pins 1 & 2 closed	Pins 1 & 2 closed

ON BOARD VIDEO SELECTION		
Setting	V1	V2
í Enabled	Open	Pins 2 & 4 closed
Disabled	Closed	Pins 4 & 6 closed