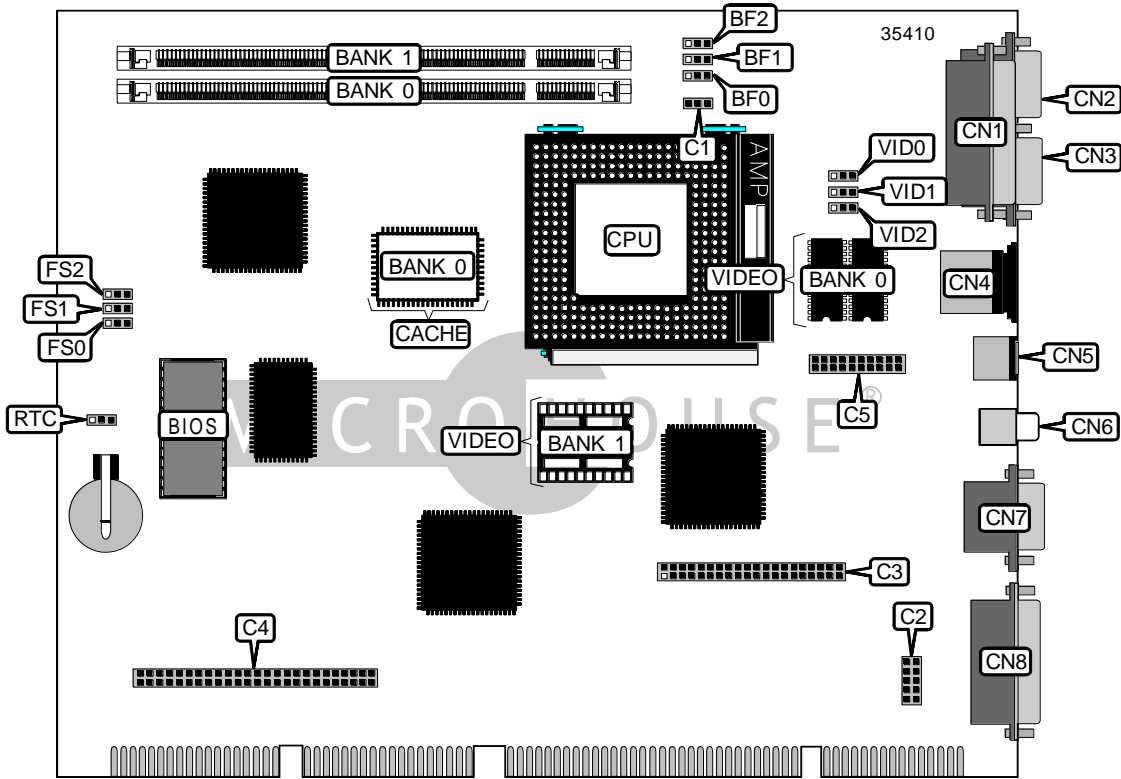


ASUS COMPUTER INTERNATIONAL TX97-N (REV. 1.03)

Device Type	Mainboard
Processor	CX 6X86/IBM 6X86/CX 6X86L/IBM 6X86L/CX 686MX/IBM 6X86MX/ AM K5/AM K6/Pentium/Pentium MMX
Processor Speed	75/90/100/120/133/150/166/200/233MHz
Chip Set	Intel
Video Chip Set	ATI
Maximum Onboard Memory	256 (EDO & SDRAM supported)
Maximum Video Memory	2MB
Cache	512KB
BIOS	Unidentified
Dimensions	254mm x 218mm
I/O Options	Game/MIDI port, parallel port, PS/2 mouse port, serial ports (2), VGA port, SVHS TV out, TV out
NPU Options	None



Continued on next page. . .

ASUS COMPUTER INTERNATIONAL
TX97-N (REV. 1.03)

... continued from previous page

CONNECTIONS			
Purpose	Location	Purpose	Location
Chassis fan power	C1	Serial port 2	CN3
Audio connector	C2	PS/2 mouse port	CN4
AMC connector	C3	SVHS TV out	CN5
CD-ROM connector	C4	TV out	CN6
LCD connector	C5	VGA port	CN7
Parallel port	CN1	Game/MIDI port	CN8
Serial port 1	CN2		

USER CONFIGURABLE SETTINGS		
Function	Label	Position
í CMOS memory normal operation	RTC	Pins 2 & 3 closed
CMOS memory clear	RTC	Pins 1 & 2 closed

DIMM CONFIGURATION		
Size	Bank 0	Bank 1
8MB	(1) 1M x 64	None
16MB	(1) 2M x 64	None
16MB	(1) 1M x 64	(1) 1M x 64
24MB	(1) 2M x 64	(1) 1M x 64
32MB	(1) 4M x 64	None
32MB	(1) 2M x 64	(1) 2M x 64
40MB	(1) 4M x 64	(1) 1M x 64
48MB	(1) 4M x 64	(1) 2M x 64
64MB	(1) 8M x 64	None
64MB	(1) 4M x 64	(1) 4M x 64
72MB	(1) 8M x 64	(1) 1M x 64
80MB	(1) 8M x 64	(1) 2M x 64
96MB	(1) 8M x 64	(1) 4M x 64
128MB	(1) 16M x 64	None
128MB	(1) 8M x 64	(1) 8M x 64
136MB	(1) 16M x 64	(1) 1M x 64
144MB	(1) 16M x 64	(1) 2M x 64
160MB	(1) 16M x 64	(1) 4M x 64
192MB	(1) 16M x 64	(1) 8M x 64
256MB	(1) 16M x 64	(1) 16M x 64

Note: Board accepts EDO & SDRAM memory.

Continued on next page...

ASUS COMPUTER INTERNATIONAL
TX97-N (REV. 1.03)

... continued from previous page

CACHE CONFIGURATION	
Size	Bank 0
512KB	(1) 64K x 64

VIDEO MEMORY JUMPER CONFIGURATION		
Size	Bank 0	Bank 1
1MB	(2) 256K x 16	None
2MB	(2) 256K x 16	(2) 256K x 16

CPU SPEED SELECTION (CX 6X86)								
CPU speed	Clock speed	Multiplier	BF0	BF1	BF2	FS0	FS1	FS2
166MHz	66MHz	2x	1 & 2	1 & 2	2 & 3	1 & 2	1 & 2	1 & 2

Note: Pins designated should be in the closed position.

CPU SPEED SELECTION (IBM 6X86)								
CPU speed	Clock speed	Multiplier	BF0	BF1	BF2	FS0	FS1	FS2
166MHz	66MHz	2x	1 & 2	1 & 2	2 & 3	1 & 2	1 & 2	1 & 2

Note: Pins designated should be in the closed position.

CPU SPEED SELECTION (CX 6X86L)								
CPU speed	Clock speed	Multiplier	BF0	BF1	BF2	FS0	FS1	FS2
166MHz	66MHz	2x	1 & 2	1 & 2	2 & 3	1 & 2	1 & 2	1 & 2

Note: Pins designated should be in the closed position.

CPU SPEED SELECTION (IBM 6X86L)								
CPU speed	Clock speed	Multiplier	BF0	BF1	BF2	FS0	FS1	FS2
166MHz	66MHz	2x	1 & 2	1 & 2	2 & 3	1 & 2	1 & 2	1 & 2

Note: Pins designated should be in the closed position.

CPU SPEED SELECTION (CX 6X86MX)								
CPU speed	Clock speed	Multiplier	BF0	BF1	BF2	FS0	FS1	FS2
166MHz	60MHz	2.5x	1 & 2	2 & 3	2 & 3	2 & 3	1 & 2	1 & 2
200MHz	66MHz	2.5x	1 & 2	2 & 3	2 & 3	1 & 2	1 & 2	1 & 2
233MHz	66MHz	3x	1 & 2	2 & 3	1 & 2	1 & 2	1 & 2	1 & 2

Note: Pins designated should be in the closed position.

Continued on next page...

ASUS COMPUTER INTERNATIONAL
TX97-N (REV. 1.03)

... continued from previous page

CPU SPEED SELECTION (IBM 6X86MX)								
CPU speed	Clock speed	Multiplier	BF0	BF1	BF2	FS0	FS1	FS2
166MHz	60MHz	2.5x	1 & 2	2 & 3	2 & 3	2 & 3	1 & 2	1 & 2
200MHz	66MHz	2.5x	1 & 2	2 & 3	2 & 3	1 & 2	1 & 2	1 & 2
233MHz	66MHz	3x	1 & 2	2 & 3	1 & 2	1 & 2	1 & 2	1 & 2

Note: Pins designated should be in the closed position.

CPU SPEED SELECTION (AM K5)								
CPU speed	Clock speed	Multiplier	BF0	BF1	BF2	FS0	FS1	FS2
75MHz	50MHz	1.5x	1 & 2	1 & 2	1 & 2	2 & 3	2 & 3	2 & 3
90MHz	60MHz	1.5x	1 & 2	1 & 2	1 & 2	2 & 3	1 & 2	1 & 2
100MHz	66MHz	1.5x	1 & 2	1 & 2	1 & 2	1 & 2	1 & 2	1 & 2
120MHz	60MHz	1.5x	1 & 2	1 & 2	1 & 2	2 & 3	1 & 2	1 & 2
133MHz	66MHz	1.5x	1 & 2	1 & 2	1 & 2	1 & 2	1 & 2	1 & 2

Note: Pins designated should be in the closed position.

CPU SPEED SELECTION (AM K6)								
CPU speed	Clock speed	Multiplier	BF0	BF1	BF2	FS0	FS1	FS2
166MHz	66MHz	2.5x	1 & 2	2 & 3	2 & 3	1 & 2	1 & 2	1 & 2
200MHz	66MHz	3x	1 & 2	2 & 3	1 & 2	1 & 2	1 & 2	1 & 2
233MHz	66MHz	3.5x	1 & 2	1 & 2	1 & 2	1 & 2	1 & 2	1 & 2

Note: Pins designated should be in the closed position.

CPU SPEED SELECTION (INTEL)								
CPU speed	Clock speed	Multiplier	BF0	BF1	BF2	FS0	FS1	FS2
75MHz	50MHz	1.5x	1 & 2	1 & 2	1 & 2	2 & 3	2 & 3	2 & 3
90MHz	60MHz	1.5x	1 & 2	1 & 2	1 & 2	2 & 3	1 & 2	1 & 2
100MHz	66MHz	1.5x	1 & 2	1 & 2	1 & 2	1 & 2	1 & 2	1 & 2
120MHz	60MHz	2x	1 & 2	1 & 2	2 & 3	2 & 3	1 & 2	1 & 2
133MHz	66MHz	2x	1 & 2	1 & 2	2 & 3	1 & 2	1 & 2	1 & 2
150MHz	60MHz	2.5x	1 & 2	2 & 3	2 & 3	2 & 3	1 & 2	1 & 2
166MHz	66MHz	2.5x	1 & 2	2 & 3	2 & 3	1 & 2	1 & 2	1 & 2

Note: Pins designated should be in the closed position.

CPU SPEED SELECTION (INTEL MMX)								
CPU speed	Clock speed	Multiplier	BF0	BF1	BF2	FS0	FS1	FS2
166MHz	66MHz	2.5x	1 & 2	2 & 3	2 & 3	1 & 2	1 & 2	1 & 2
200MHz	66MHz	3x	1 & 2	2 & 3	1 & 2	1 & 2	1 & 2	1 & 2
233MHz	66MHz	3.5x	1 & 2	1 & 2	1 & 2	1 & 2	1 & 2	1 & 2

Note: Pins designated should be in the closed position.

Continued on next page...

ASUS COMPUTER INTERNATIONAL
TX97-N (REV. 1.03)

... continued from previous page

CPU VOLTAGE SELECTION (SINGLE)			
Voltage	VID0	VID1	VID2
3.4v	Pins 2 & 3 closed	Pins 2 & 3 closed	Pins 2 & 3 closed
3.5v	Pins 1 & 2 closed	Pins 1 & 2 closed	Pins 2 & 3 closed

CPU VOLTAGE SELECTION (DUAL)			
Voltage	VID0	VID1	VID2
2.1v	Pins 1 & 2 closed	Pins 2 & 3 closed	Pins 2 & 3 closed
2.8v	Pins 2 & 3 closed	Pins 2 & 3 closed	Pins 2 & 3 closed
2.9v	Pins 1 & 2 closed	Pins 2 & 3 closed	Pins 2 & 3 closed
3.2v	Pins 2 & 3 closed	Pins 2 & 3 closed	Pins 1 & 2 closed