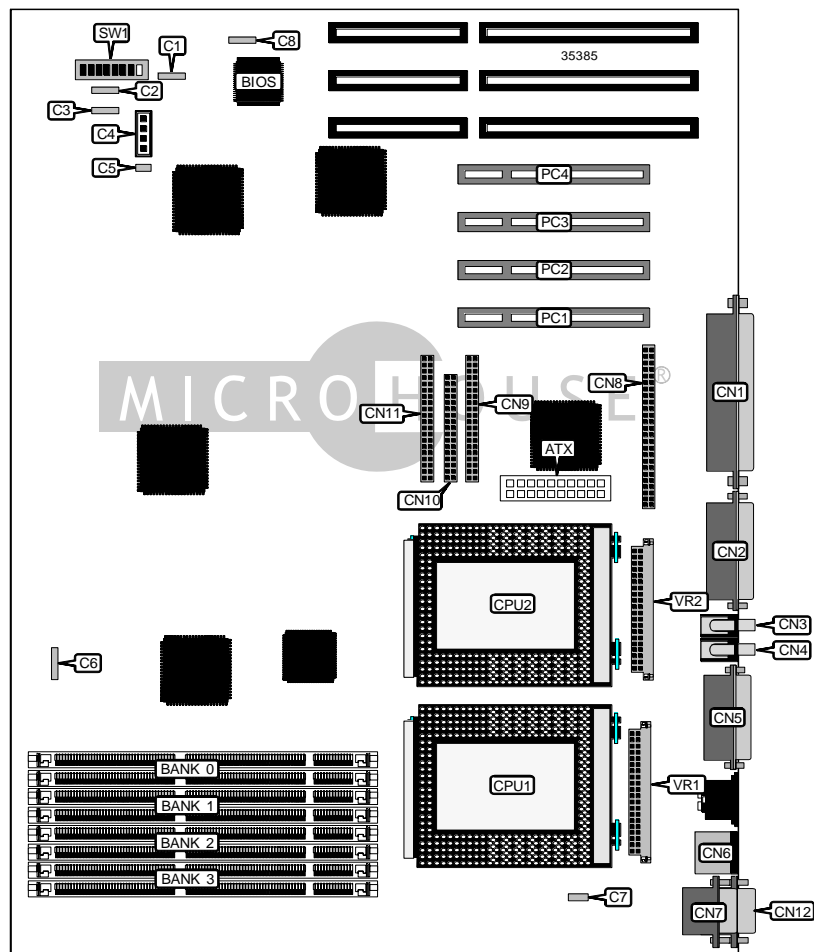


HEWLETT-PACKARD COMPANY

HP VECTRA XW

Device Type	Mainboard
Processor	Pentium Pro
Processor Speed	200MHz
Chip Set	Intel
Video Chip Set	None
Maximum Onboard Memory	512MB (EDO & SDRAM supported)
Maximum Video Memory	None
Cache	256/512KB (located on Pentium Pro CPU)
BIOS	Unidentified
Dimensions	305mm x 244mm
I/O Options	32-bit PCI slots (4), floppy drive interface, game/MIDI port, IDE interfaces (2), SCSI interface, External SCSI interface, parallel port, PS/2 mouse port, serial ports (2), VRM connectors (2), ATX power connector, line in, line out, microphone in, audio in – CD-ROM
NPU Options	None



Continued on next page . . .

HEWLETT-PACKARD COMPANY
HP VECTRA XW

... continued from previous page

CONNECTIONS			
Purpose	Location	Purpose	Location
ATX power connector	ATX	Line in	CN4
External start connector	C1	Game/MIDI port	CN5
Speaker	C2	PS/2 mouse port	CN6
Multimedia connector	C3	Serial port 1	CN7
Audio in – CD-ROM	C4	SCSI interface	CN8
Microphone in	C5	IDE interface 1	CN9
Control panel connector	C6	Floppy drive interface	CN10
Chassis fan power	C7	IDE interface 2	CN11
External battery	C8	Serial port 2	CN12
External SCSI interface	CN1	32-bit PCI slots	PC1 – PC4
Parallel port	CN2	VRM connector	VR1
Line out	CN3	VRM connector	VR2

USER CONFIGURABLE SETTINGS		
Function	Label	Position
í CMOS memory normal operation	SW1/1	Off
CMOS memory clear	SW1/1	On
í Password normal operation	SW1/2	Off
Password clear	SW1/2	On
í Setup access disabled	SW1/3	Off
Setup access enabled	SW1/3	On

DIMM CONFIGURATION				
Size	Bank 0	Bank 1	Bank 2	Bank 3
64MB	(2) 4M x 64	None	None	None
128MB	(2) 4M x 64	(2) 4M x 64	None	None
128MB	(2) 8M x 64	None	None	None
192MB	(2) 8M x 64	(2) 4M x 64	None	None
192MB	(2) 4M x 64	(2) 4M x 64	(2) 4M x 64	None
256MB	(2) 8M x 64	(2) 4M x 64	(2) 4M x 64	None
256MB	(2) 4M x 64	(2) 4M x 64	(2) 4M x 64	(2) 4M x 64
256MB	(2) 8M x 64	(2) 8M x 64	None	None
320MB	(2) 8M x 64	(2) 4M x 64	(2) 4M x 64	(2) 4M x 64
320MB	(2) 8M x 64	(2) 8M x 64	(2) 4M x 64	None
384MB	(2) 8M x 64	(2) 8M x 64	(2) 4M x 64	(2) 4M x 64
384MB	(2) 8M x 64	(2) 8M x 64	(2) 8M x 64	None
512MB	(2) 8M x 64	(2) 8M x 64	(2) 8M x 64	(2) 8M x 64

Note: Board accepts SDRAM memory.

Continued on next page...

HEWLETT-PACKARD COMPANY
HP VECTRA XW

... continued from previous page

CACHE CONFIGURATION							
Note: 256KB/512KB cache is located on the Pentium Pro CPU.							

CPU SPEED SELECTION							
CPU speed	Clock speed	Multiplier	SW1/4	SW1/5	SW1/6	SW1/7	SW1/8
200MHz	66MHz	3x	Off	Off	Off	On	Off