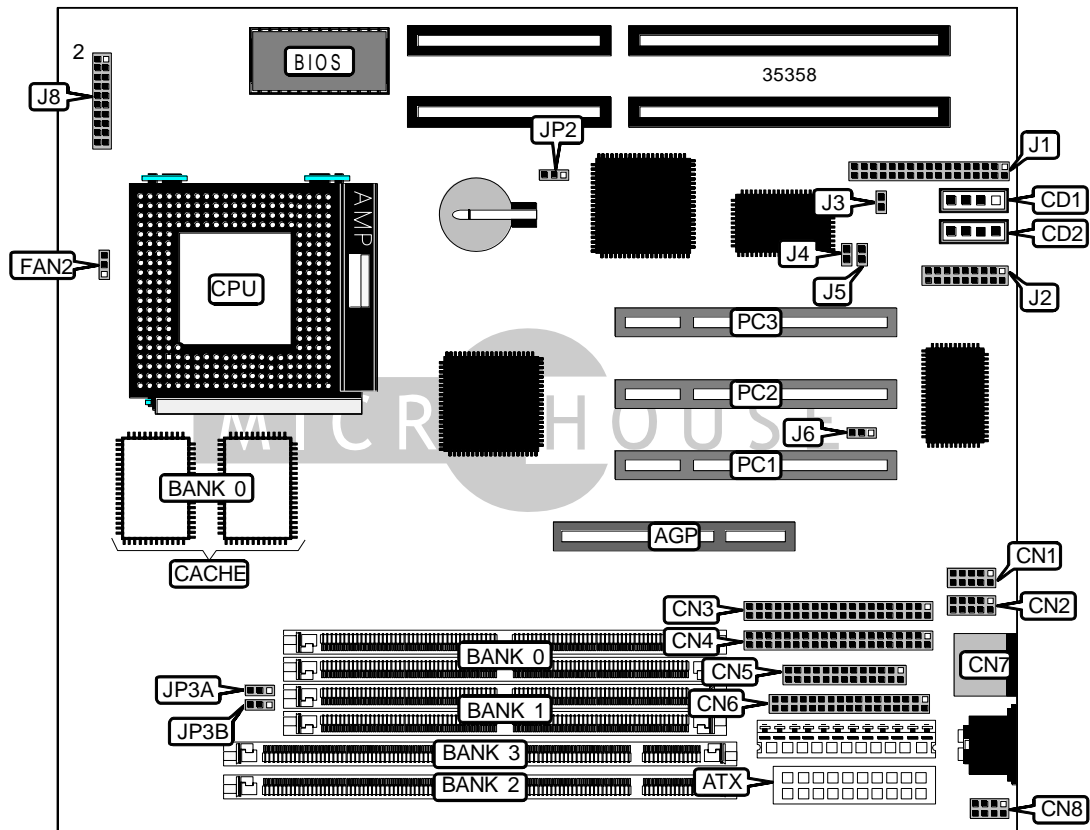


# EURONE EM - 5570

<b>Device Type</b>	Mainboard
<b>Processor</b>	CX 6X86L/IBM 6X86L/CX 686MX/IBM 6X86MX/IDT C6/AM K6/ Pentium/Pentium MMX
<b>Processor Speed</b>	75/90/100/120/133/150/166/180/200/233/266MHz
<b>Chip Set</b>	Unidentified
<b>Video Chip Set</b>	None
<b>Maximum Onboard Memory</b>	640MB (EDO & SDRAM supported)
<b>Maximum Video Memory</b>	None
<b>Cache</b>	1024KB
<b>BIOS</b>	AMI
<b>Dimensions</b>	254mm x 218mm
<b>I/O Options</b>	32-bit PCI slots (3), floppy drive interface, game/sound interface, IDE interfaces (2), parallel port, PS/2 mouse port, PS/2 mouse interface, serial ports (2), ATX power connector, AGP slot, digital line in, digital line out, audio in – CD-ROMs (2)
<b>NPU Options</b>	None



Continued on next page. . .

EURONE  
EM - 5570

... continued from previous page

CONNECTIONS			
Purpose	Location	Purpose	Location
AGP slot	AGP	Game/sound connector	J1
ATX power connector	ATX	ATX form card connector	J2
Audio in – CD-ROM (Sony)	CD1	Digital line in	J4
Audio in – CD-ROM (Panasonic)	CD2	Digital line out	J5
Serial port 1	CN1	Wake on LAN connector	J6
Serial port 2	CN2	Power LED & keylock	J8/pins 1/3/5/7/9
IDE interface 2	CN3	Speaker	J8/pins 2/4/6/8
IDE interface 1	CN4	Turbo LED	J8/pins 13 & 14
Parallel port	CN5	IDE interface LED	J8/pins 15 & 16
Floppy drive interface	CN6	Reset switch	J8/pins 17 & 18
PS/2 mouse port	CN7	Soft off power supply	J8/pins 19 & 20
PS/2 mouse interface	CN8	32-bit PCI slots	PC1 – PC3
CPU fan power	FAN2		

Note: J2 contains a USB, IR and mouse connector.

USER CONFIGURABLE SETTINGS		
Function	Label	Position
Microphone type select standard	J3	Open
Microphone type select special	J3	Closed
CMOS memory normal operation	JP2	Pins 1 & 2 closed
CMOS memory clear	JP2	Pins 2 & 3 closed

SIMM CONFIGURATION		
Size	Bank 0	Bank 1
8MB	(2) 1M x 36	None
16MB	(2) 2M x 36	None
16MB	(2) 1M x 36	(2) 1M x 36
24MB	(2) 2M x 36	(2) 1M x 36
32MB	(2) 4M x 36	None
32MB	(2) 2M x 36	(2) 2M x 36
40MB	(2) 4M x 36	(2) 1M x 36
48MB	(2) 4M x 36	(2) 2M x 36
64MB	(2) 8M x 36	None
64MB	(2) 4M x 36	(2) 4M x 36
72MB	(2) 8M x 36	(2) 1M x 36
80MB	(2) 8M x 36	(2) 2M x 36
96MB	(2) 8M x 36	(2) 4M x 36
128MB	(2) 8M x 36	(2) 8M x 36

Continued on next page...

EURONE  
EM - 5570

... continued from previous page

SIMM CONFIGURATION (CON'T)		
Size	Bank 0	Bank 1
128MB	(2) 16M x 36	None
136MB	(2) 16M x 36	(2) 1M x 36
144MB	(2) 16M x 36	(2) 2M x 36
160MB	(2) 16M x 36	(2) 4M x 36
192MB	(2) 16M x 36	(2) 8M x 36
256MB	(2) 16M x 36	(2) 16M x 36
256MB	(2) 32M x 36	None
264MB	(2) 32M x 36	(2) 1M x 36
272MB	(2) 32M x 36	(2) 2M x 36
288MB	(2) 32M x 36	(2) 4M x 36
320MB	(2) 32M x 36	(2) 8M x 36
384MB	(2) 32M x 36	(2) 16M x 36
512MB	(2) 32M x 36	(2) 32M x 36

Note: Board accepts EDO memory.

DIMM CONFIGURATION		
Size	Bank 2	Bank 3
64MB	(1) 4M x 64	(1) 4M x 64
128MB	(1) 8M x 64	(1) 8M x 64
160MB	(1) 16M x 64	(1) 4M x 64
192MB	(1) 16M x 64	(1) 8M x 64
256MB	(1) 16M x 64	(1) 16M x 64

Note: Board accepts SDRAM memory.

DIMM VOLTAGE CONFIGURATION		
Voltage	JP3A	JP3B
3.3v	Pins 2 & 3 closed	Pins 2 & 3 closed
5v	Pins 1 & 2 closed	Pins 1 & 2 closed

CACHE CONFIGURATION	
Size	Bank 0
1MB	(2) 128K x 32