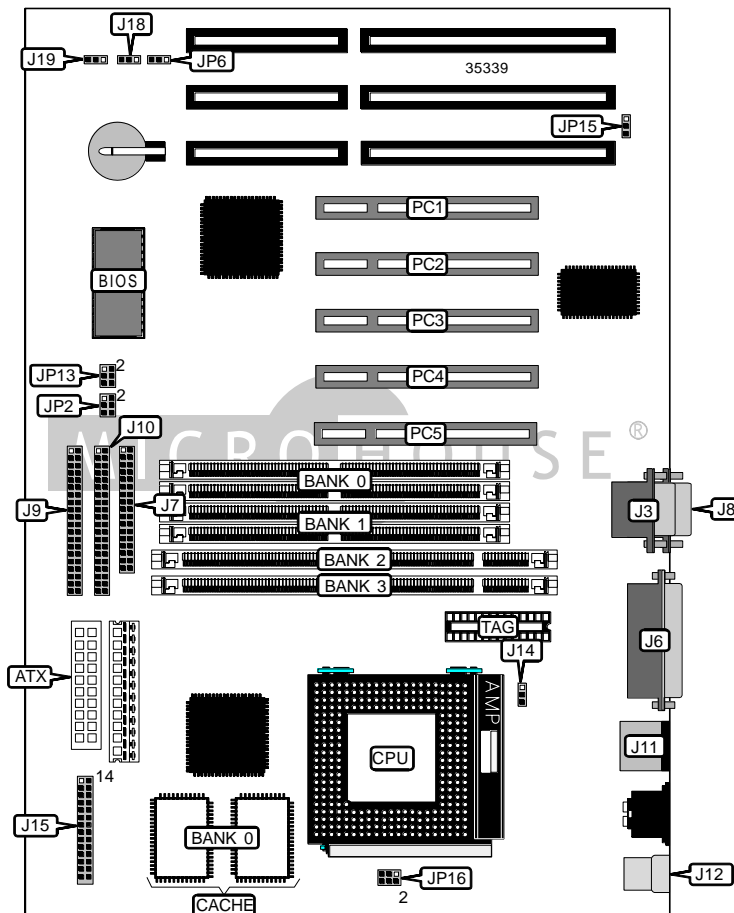


BIOSTAR MICROTECH INTERNATIONAL CORPORATION

M5TTB

Device Type	Mainboard
Processor	CX 6X86/CX 6X86L/CX 686MX/AM K5/AM K6/Pentium/Pentium MMX
Processor Speed	90/100/120/133/150/166/200/233/266MHz
Chip Set	Intel
Video Chip Set	None
Maximum Onboard Memory	256MB (EDO & SDRAM supported)
Maximum Video Memory	None
Cache	256/512KB
BIOS	Award
Dimensions	305mm x 190mm
I/O Options	32-bit PCI slots (5), floppy drive interface, green PC connector, IDE interfaces (2), parallel port, PS/2 mouse port, serial ports (2), IR connector, USB connector, ATX power connector
NPU Options	None



Continued on next page . . .

BIOSTAR MICROTECH INTERNATIONAL CORPORATION
M5TTB

... continued from previous page

CONNECTIONS			
Purpose	Location	Purpose	Location
ATX power connector	ATX	Speaker	J15/pins 1 - 4
Serial port 2	J3	Power LED & keylock	J15/pins 5 - 9
Parallel port	J6	Soft off power supply	J15/pins 10 & 11
Floppy drive interface	J7	Reset switch	J15/pins 12 & 13
Serial port 1	J8	Green PC connector	J15/pins 17 & 18
IDE interface 1	J9	IDE interface LED	J15/pins 20 & 21
IDE interface 2	J10	IR connector	J15/pins 22 - 26
PS/2 mouse port	J11	Wake on LAN connector	J18
USB connector	J12	Wake on modem connector	J19
CPU fan power	J14	32-bit PCI slots	PC1 – PC5

USER CONFIGURABLE SETTINGS		
Function	Label	Position
CMOS memory normal operation	JP6	Pins 1 & 2 closed
CMOS memory clear	JP6	Pins 2 & 3 closed
On board battery disabled	JP6	Open
Ring in COM select COM1/3	JP15	Pins 1 & 2 closed
Ring in COM select COM 2/4	JP15	Pins 2 & 3 closed

SIMM CONFIGURATION		
Size	Bank 0	Bank 1
8MB	(2) 1M x 36	None
16MB	(2) 2M x 36	None
16MB	(2) 1M x 36	(2) 1M x 36
24MB	(2) 2M x 36	(2) 1M x 36
32MB	(2) 4M x 36	None
32MB	(2) 2M x 36	(2) 2M x 36
40MB	(2) 4M x 36	(2) 1M x 36
48MB	(2) 4M x 36	(2) 2M x 36
64MB	(2) 8M x 36	None
64MB	(2) 4M x 36	(2) 4M x 36
72MB	(2) 8M x 36	(2) 1M x 36
80MB	(2) 8M x 36	(2) 2M x 36
96MB	(2) 8M x 36	(2) 4M x 36
128MB	(2) 8M x 36	(2) 8M x 36
128MB	(2) 16M x 36	None

Continued on next page...

BIOSTAR MICROTECH INTERNATIONAL CORPORATION
M5TTB

... continued from previous page

SIMM CONFIGURATION (CON'T)		
Size	Bank 0	Bank 1
136MB	(2) 16M x 36	(2) 1M x 36
144MB	(2) 16M x 36	(2) 2M x 36
160MB	(2) 16M x 36	(2) 4M x 36
192MB	(2) 16M x 36	(2) 8M x 36
256MB	(2) 16M x 36	(2) 16M x 36
Note: Board accepts EDO memory.		

DIMM CONFIGURATION		
Size	Bank 2	Bank 3
8MB	(1) 1M x 64	None
16MB	(1) 2M x 64	None
16MB	(1) 1M x 64	(1) 1M x 64
24MB	(1) 2M x 64	(1) 1M x 64
32MB	(1) 4M x 64	None
32MB	(1) 2M x 64	(1) 2M x 64
40MB	(1) 4M x 64	(1) 1M x 64
48MB	(1) 4M x 64	(1) 2M x 64
64MB	(1) 8M x 64	None
64MB	(1) 4M x 64	(1) 4M x 64
72MB	(1) 8M x 64	(1) 1M x 64
80MB	(1) 8M x 64	(1) 2M x 64
96MB	(1) 8M x 64	(1) 4M x 64
128MB	(1) 16M x 64	None
128MB	(1) 8M x 64	(1) 8M x 64
136MB	(1) 16M x 64	(1) 1M x 64
144MB	(1) 16M x 64	(1) 2M x 64
160MB	(1) 16M x 64	(1) 4M x 64
192MB	(1) 16M x 64	(1) 8M x 64
256MB	(1) 16M x 64	(1) 16M x 64
Note: Board accepts SDRAM memory.		

CACHE CONFIGURATION		
Size	Bank 0	TAG
256KB	(2) 32K x 32	Unidentified
512KB	(2) 64K x 32	Unidentified

Continued on next page...

BIOSTAR MICROTECH INTERNATIONAL CORPORATION
M5TTB

... continued from previous page

CPU SPEED SELECTION (CX 6X86)				
CPU speed	Clock speed	Multiplier	JP2	JP13
150MHz	60MHz	2x	3 & 4, 5 & 6	1 & 2
166MHz	66MHz	2x	1 & 2, 5 & 6	1 & 2
200MHz	75MHz	2x	3 & 4	1 & 2

Note: Pins designated should be in the closed position.

CPU SPEED SELECTION (CX 6X86L)				
CPU speed	Clock speed	Multiplier	JP2	JP13
150MHz	60MHz	2x	3 & 4, 5 & 6	1 & 2
166MHz	66MHz	2x	1 & 2, 5 & 6	1 & 2
200MHz	75MHz	2x	3 & 4	1 & 2

Note: Pins designated should be in the closed position.

CPU SPEED SELECTION (CX 6X86MX)				
CPU speed	Clock speed	Multiplier	JP2	JP13
150MHz	60MHz	2x	3 & 4, 5 & 6	1 & 2
166MHz	66MHz	2x	1 & 2, 5 & 6	1 & 2
166MHz	60MHz	2.5x	3 & 4, 5 & 6	1 & 2, 3 & 4
200MHz	75MHz	2x	3 & 4	1 & 2
200MHz	66MHz	2.5x	1 & 2, 5 & 6	1 & 2, 3 & 4
200MHz	60MHz	3x	3 & 4, 5 & 6	3 & 4
233MHz	75MHz	2.5x	3 & 4	1 & 2, 3 & 4
266MHz	66MHz	3.5x	1 & 2, 5 & 6	Open
266MHz	75MHz	3x	3 & 4	3 & 4

Note: Pins designated should be in the closed position.

CPU SPEED SELECTION (AM K5)				
CPU speed	Clock speed	Multiplier	JP2	JP13
90MHz	60MHz	1.5x	3 & 4, 5 & 6	Open
100MHz	66MHz	1.5x	1 & 2, 5 & 6	Open
120MHz	60MHz	2x	3 & 4, 5 & 6	1 & 2
133MHz	66MHz	2x	1 & 2, 5 & 6	1 & 2
166MHz	66MHz	2.5x	1 & 2, 5 & 6	1 & 2, 3 & 4
200MHz	66MHz	3x	1 & 2, 5 & 6	3 & 4

Note: Pins designated should be in the closed position.

Continued on next page...

BIOSTAR MICROTECH INTERNATIONAL CORPORATION

M5TTB

... continued from previous page

CPU SPEED SELECTION (AM K6)				
CPU speed	Clock speed	Multiplier	JP2	JP13
166MHz	66MHz	2.5x	1 & 2, 5 & 6	1 & 2, 3 & 4
200MHz	66MHz	3x	1 & 2, 5 & 6	3 & 4
233MHz	66MHz	3.5x	1 & 2, 5 & 6	Open

Note: Pins designated should be in the closed position.

CPU SPEED SELECTION (INTEL)				
CPU speed	Clock speed	Multiplier	JP2	JP13
90MHz	60MHz	1.5x	3 & 4, 5 & 6	Open
100MHz	66MHz	1.5x	1 & 2, 5 & 6	Open
120MHz	60MHz	2x	3 & 4, 5 & 6	1 & 2
133MHz	66MHz	2x	1 & 2, 5 & 6	1 & 2
150MHz	60MHz	2.5x	3 & 4, 5 & 6	1 & 2, 3 & 4
166MHz	66MHz	2.5x	1 & 2, 5 & 6	1 & 2, 3 & 4
200MHz	66MHz	3x	1 & 2, 5 & 6	3 & 4

Note: Pins designated should be in the closed position.

CPU SPEED SELECTION (INTEL MMX)				
CPU speed	Clock speed	Multiplier	JP2	JP13
166MHz	66MHz	2.5x	1 & 2, 5 & 6	1 & 2, 3 & 4
200MHz	66MHz	3x	1 & 2, 5 & 6	3 & 4
233MHz	66MHz	3.5x	1 & 2, 5 & 6	Open

Note: Pins designated should be in the closed position.

CPU VOLTAGE SELECTION (SINGLE)	
Voltage	JP16
3.3v	Pins 1 & 2, 3 & 4 closed
3.5v	Open

CPU VOLTAGE SELECTION (DUAL)		
Voltage	V core	JP16
3.3v	2.1v	Pins 5 & 6 closed
3.3v	2.2v	Pins 1 & 2, 5 & 6 closed
3.3v	2.8v	Open
3.3v	2.9v	Pins 1 & 2 closed
3.3v	3.2v	Pins 3 & 4 closed