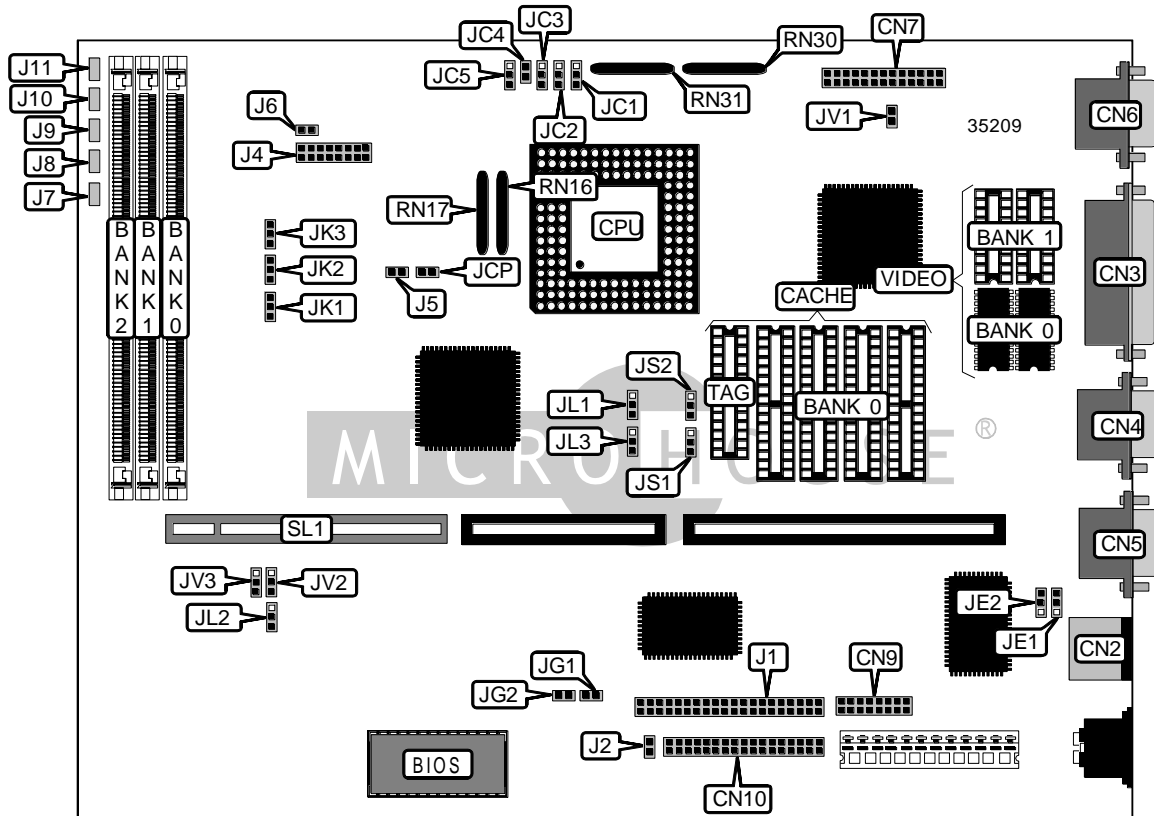


FIRST INTERNATIONAL COMPUTER, INC.

486 - P A K - 2

Device Type	Mainboard
Processor	CX M6/80486SX/SL80486/CX M7/AM486DX/AM486DXL/80486DX AM486DX2/80486DX2/P4S/P24C/P24D/P24S/P24T/P24CT/ AM486DX4
Processor Speed	25/33/40/50(internal)/50/66(internal)/75(internal)/100(internal)MHz
Chip Set	VIA
Video Chip Set	S3
Maximum Onboard Memory	64MB
Maximum Video Memory	2MB
Cache	128/256/512KB
BIOS	Unidentified
Dimensions	330mm x 218mm
I/O Options	32-bit VESA local bus slot, floppy drive interface, game interface, IDE interface, parallel port, PS/2 mouse port, serial ports (2), VGA feature connector, VGA port
NPU Options	None



Continued on next page . . .

FIRST INTERNATIONAL COMPUTER, INC.
486 - PAK - 2

... continued from previous page

CONNECTIONS			
Purpose	Location	Purpose	Location
PS/2 mouse port	CN2	Game interface	CN9
Parallel port	CN3	Floppy drive interface	CN10
Serial port 2	CN4	IDE interface	J1
Serial port 1	CN5	Front panel connectors	J7 – J11
VGA port	CN6	32-bit VESA local bus slot	SL1
VGA feature connector	CN7		

USER CONFIGURABLE SETTINGS		
Function	Label	Position
í HDD BALE disabled	J2	Open
HDD BALE enabled	J2	Closed
í Regulator board not installed	J4	Pins 1 & 2, 15 & 16 closed
Regulator board installed	J4	Open
í Monitor type select monochrome	J5	Open
Monitor type select color	J5	Closed
í Factory configured - do not alter	J6	Unidentified
í CMOS memory normal operation	JCP	Open
CMOS memory clear	JCP	Closed
í Green LED disabled	JG1	Open
Green LED enabled	JG1	Closed
í Outlet enabled	JG2	Open
Outlet disabled	JG2	Closed
505 riser card installed	JL3	Pins 1 & 2 closed
505 riser card not installed	JL3	Pins 2 & 3 closed
í VGA IRQ9 disabled	JV1	Open
VGA IRQ9 enabled	JV1	Closed

SIMM CONFIGURATION			
Size	Bank 0	Bank 1	Bank 2
1MB	(1) 256K x 36	None	None
2MB	(1) 256K x 36	(1) 256K x 36	None
3MB	(1) 256K x 36	(1) 256K x 36	(1) 256K x 36
4MB	(1) 1M x 36	None	None
5MB	(1) 1M x 36	(1) 256K x 36	None
6MB	(1) 1M x 36	(1) 256K x 36	(1) 256K x 36
8MB	(1) 1M x 36	(1) 1M x 36	None
12MB	(1) 1M x 36	(1) 1M x 36	(1) 1M x 36

Continued on next page...

FIRST INTERNATIONAL COMPUTER, INC.
486 - P A K - 2

... continued from previous page

SIMM CONFIGURATION (CON'T)			
Size	Bank 0	Bank 1	Bank 2
12MB	(1) 1M x 36	(1) 2M x 36	None
16MB	(1) 4M x 36	None	None
16MB	(1) 2M x 36	(1) 2M x 36	None
17MB	(1) 4M x 36	(1) 256K x 36	None
18MB	(1) 4M x 36	(1) 256K x 36	(1) 256K x 36
20MB	(1) 4M x 36	(1) 1M x 36	None
21MB	(1) 4M x 36	(1) 1M x 36	(1) 256K x 36
24MB	(1) 1M x 36	(1) 1M x 36	(1) 4M x 36
32MB	(1) 4M x 36	(1) 4M x 36	None
32MB	(1) 8M x 36	None	None
33MB	(1) 4M x 36	(1) 4M x 36	(1) 256K x 36
36MB	(1) 4M x 36	(1) 4M x 36	(1) 1M x 36
48MB	(1) 4M x 36	(1) 4M x 36	(1) 4M x 36
48MB	(1) 4M x 36	(1) 8M x 36	None
64MB	(1) 4M x 36	(1) 8M x 36	(1) 4M x 36
64MB	(1) 8M x 36	(1) 8M x 36	None

CACHE CONFIGURATION		
Size	Bank 0	TAG
128KB	(4) 32K x 8	(1) 32K x 8
256KB	(4) 64K x 8	(1) 32K x 8
512KB	(4) 128K x 8	(1) 32K x 8

CACHE JUMPER CONFIGURATION		
Size	JS1	JS2
128KB	Pins 1 & 2 closed	Pins 1 & 2 closed
256KB	Pins 2 & 3 closed	Pins 1 & 2 closed
512KB	Pins 2 & 3 closed	Pins 2 & 3 closed

VIDEO MEMORY CONFIGURATION		
Size	Bank 0	Bank 1
1MB	(2) 256K x 16	None
2MB	(2) 256K x 16	(2) 256K x 16

Continued on next page...

FIRST INTERNATIONAL COMPUTER, INC.

486 - P A K - 2

... continued from previous page

CPU SPEED SELECTION			
Speed	JK1	JK2	JK3
25MHz	Pins 2 & 3 closed	Pins 1 & 2 closed	Pins 2 & 3 closed
33MHz	Pins 2 & 3 closed	Pins 2 & 3 closed	Pins 1 & 2 closed
40MHz	Pins 1 & 2 closed	Pins 1 & 2 closed	Pins 2 & 3 closed
50iMHz	Pins 2 & 3 closed	Pins 1 & 2 closed	Pins 2 & 3 closed
50MHz	Pins 1 & 2 closed	Pins 2 & 3 closed	Pins 1 & 2 closed
66iMHz	Pins 2 & 3 closed	Pins 2 & 3 closed	Pins 1 & 2 closed
75iMHz	Pins 2 & 3 closed	Pins 1 & 2 closed	Pins 2 & 3 closed
100iMHz	Pins 2 & 3 closed	Pins 2 & 3 closed	Pins 1 & 2 closed

CPU TYPE SELECTION			
Type	JC1	JC2	JC3
CX M6	Pins 2 & 3 closed	Pins 2 & 3 closed	Pins 1 & 2 closed
80486SX	Pins 2 & 3 closed	Pins 2 & 3 closed	Pins 1 & 2 closed
SL80486	Pins 2 & 3 closed	Pins 2 & 3 closed	Pins 1 & 2 closed
CX M7	Pins 1 & 2 closed	Pins 1 & 2 closed	Pins 1 & 2 closed
AM486DX	Pins 1 & 2 closed	Pins 1 & 2 closed	Pins 1 & 2 closed
AM486DXL	Pins 1 & 2 closed	Pins 1 & 2 closed	Pins 1 & 2 closed
80486DX	Pins 1 & 2 closed	Pins 1 & 2 closed	Pins 1 & 2 closed
AM486DX2	Pins 1 & 2 closed	Pins 1 & 2 closed	Pins 1 & 2 closed
80486DX2	Pins 1 & 2 closed	Pins 1 & 2 closed	Pins 1 & 2 closed
P4S	Pins 1 & 2 closed	Pins 1 & 2 closed	Pins 1 & 2 closed
P24C	Pins 1 & 2 closed	Pins 1 & 2 closed	Pins 1 & 2 closed
P24D	Pins 1 & 2 closed	Pins 1 & 2 closed	Pins 2 & 3 closed
P24S	Pins 1 & 2 closed	Pins 1 & 2 closed	Pins 1 & 2 closed
P24T	Pins 1 & 2 closed	Pins 1 & 2 closed	Pins 2 & 3 closed
P24CT	Pins 1 & 2 closed	Pins 1 & 2 closed	Pins 1 & 2 closed
AM486DX4	Pins 1 & 2 closed	Pins 1 & 2 closed	Pins 1 & 2 closed

Continued on next page. . .

FIRST INTERNATIONAL COMPUTER, INC.
486 - P A K - 2

... continued from previous page

CPU TYPE SELECTION (CON'T)				
Type	RN16	RN17	RN30	RN31
CX M6	Not installed	Installed	Not installed	Not installed
80486SX	Not installed	Not installed	Not installed	Installed
SL80486	Not installed	Not installed	Not installed	Installed
CX M7	Not installed	Installed	Not installed	Not installed
AM486DX	Not installed	Not installed	Not installed	Installed
AM486DXL	Not installed	Not installed	Installed	Not installed
80486DX	Not installed	Not installed	Not installed	Installed
AM486DX2	Not installed	Not installed	Not installed	Installed
80486DX2	Not installed	Not installed	Not installed	Installed
P4S	Not installed	Not installed	Not installed	Installed
P24C	Installed	Not installed	Not installed	Installed
P24D	Installed	Not installed	Not installed	Installed
P24S	Not installed	Not installed	Not installed	Installed
P24T	Installed	Not installed	Not installed	Installed
P24CT	Installed	Not installed	Not installed	Installed
AM486DX4	Not installed	Not installed	Not installed	Installed

CPU WRITE SELECTION	
Setting	JC4
Write through	Open
Write back	Closed

AMD CLOCK MODE SELECTION	
Setting	JC5
Speed double for DX2-80V/DX4	Pins 1 & 2 closed
Speed double for DX2 plus	Pins 2 & 3 closed
Speed triple for DX2 plus	Pins 1 & 2 closed
Speed triple for DX2-80V/DX4	Pins 2 & 3 closed

VL BUS WAIT STATE SELECTION	
Setting	JV2
0	Pins 1 & 2 closed
1	Pins 2 & 3 closed

VL BUS SPEED SELECTION	
Speed	JV3
<= 33MHz	Pins 1 & 2 closed
>33 MHz	Pins 2 & 3 closed

Continued on next page. . .

FIRST INTERNATIONAL COMPUTER, INC.
486 - P A K - 2

... continued from previous page

DMA CHANNEL SELECTION		
Channel	JE1	JE2
í Disabled	Open	Open
1	Pins 1 & 2 closed	Pins 1 & 2 closed
3	Pins 2 & 3 closed	Pins 2 & 3 closed

PCICLK SELECTION		
Setting	JL1	JL2
PCICLK = CPUCLK	Pins 1 & 2 closed	Pins 1 & 2 closed
PCICLK = CPUCLK/2	Pins 2 & 3 closed	Pins 2 & 3 closed