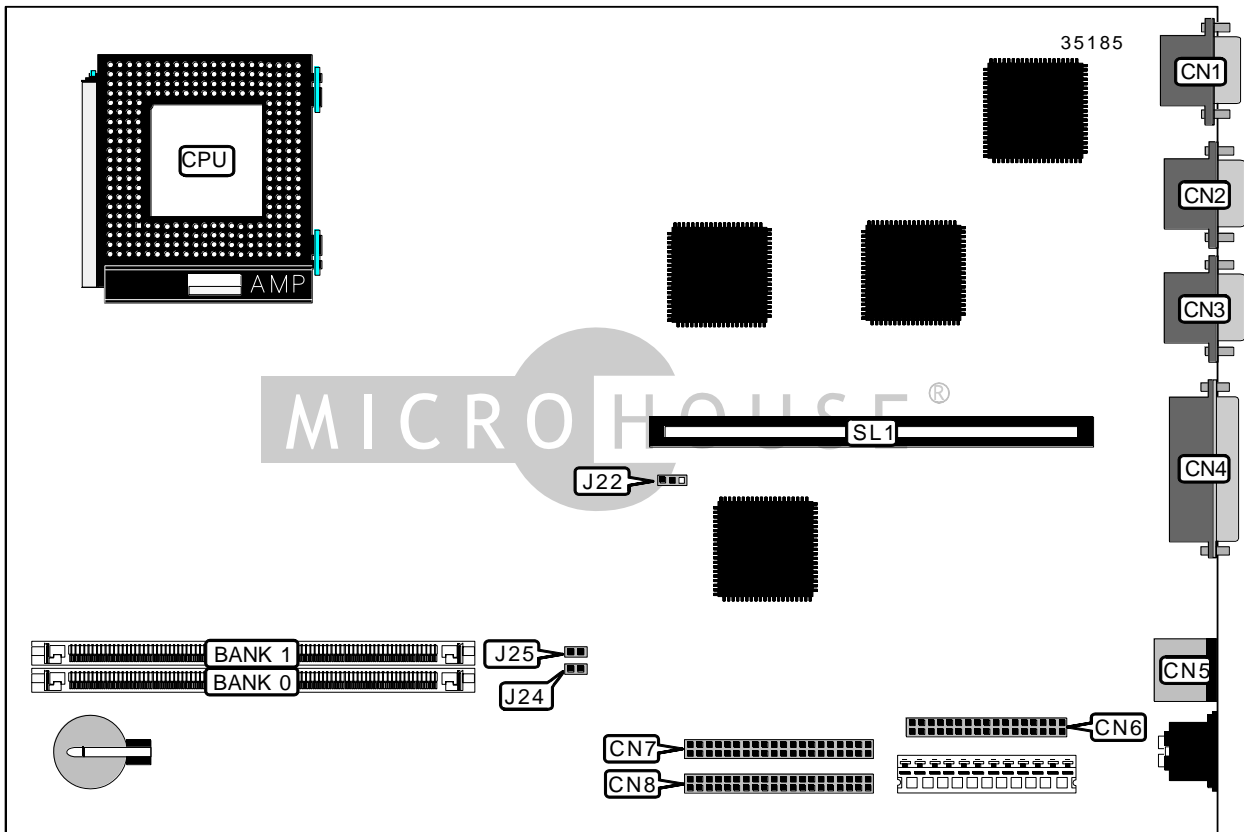


DIGITAL EQUIPMENT CORPORATION VENTURIS PENTIUM (VER. 1.0)

Device Type	Mainboard
Processor	Pentium
Processor Speed	60MHz
Chip Set	Unidentified
Video Chip Set	S3
Maximum Onboard Memory	64MB
Maximum Video Memory	Unidentified
Cache	256KB
BIOS	Unidentified
Dimensions	254mm x 218mm
I/O Options	Floppy drive interface, IDE interfaces (2), parallel port, PS/2 mouse port, serial ports (2), VGA port, riser slot
NPU Options	None



Continued on next page...

DIGITAL EQUIPMENT CORPORATION

VENTURIS PENTIUM (VER. 1.0)

... continued from previous page

CONNECTIONS			
Purpose	Location	Purpose	Location
VGA port	CN1	Floppy drive interface	CN6
Serial port	CN2	IDE interface	CN7
Serial port	CN3	IDE interface	CN8
Parallel port	CN4	Riser slot	SL1
PS/2 mouse port	CN5		

Note: VGA & serial ports are shown for informational purposes only. The location may not be exact.

USER CONFIGURABLE SETTINGS		
Function	Label	Position
í CMOS memory normal operation	J22	Pins 1 & 2 closed
CMOS memory clear	J22	Pins 2 & 3 closed
í Password normal operation	J24	Open
Password memory clear	J24	Closed
í Recovery mode normal operation	J25	Open
Recovery mode enabled	J25	Closed

SIMM CONFIGURATION		
Size	Bank 0	Bank 1
4MB	(1) 1M x 36	None
8MB	(1) 2M x 36	None
8MB	(1) 1M x 36	(1) 1M x 36
16MB	(1) 2M x 36	(1) 2M x 36
16MB	(1) 4M x 36	None
32MB	(1) 4M x 36	(1) 4M x 36
32MB	(1) 8M x 36	None
64MB	(1) 8M x 36	(1) 8M x 36

CACHE CONFIGURATION
Note: Board is factory installed with 256KB cache. The location is unidentified.

VIDEO MEMORY CONFIGURATION
Note: The location & size of the video memory is unidentified.