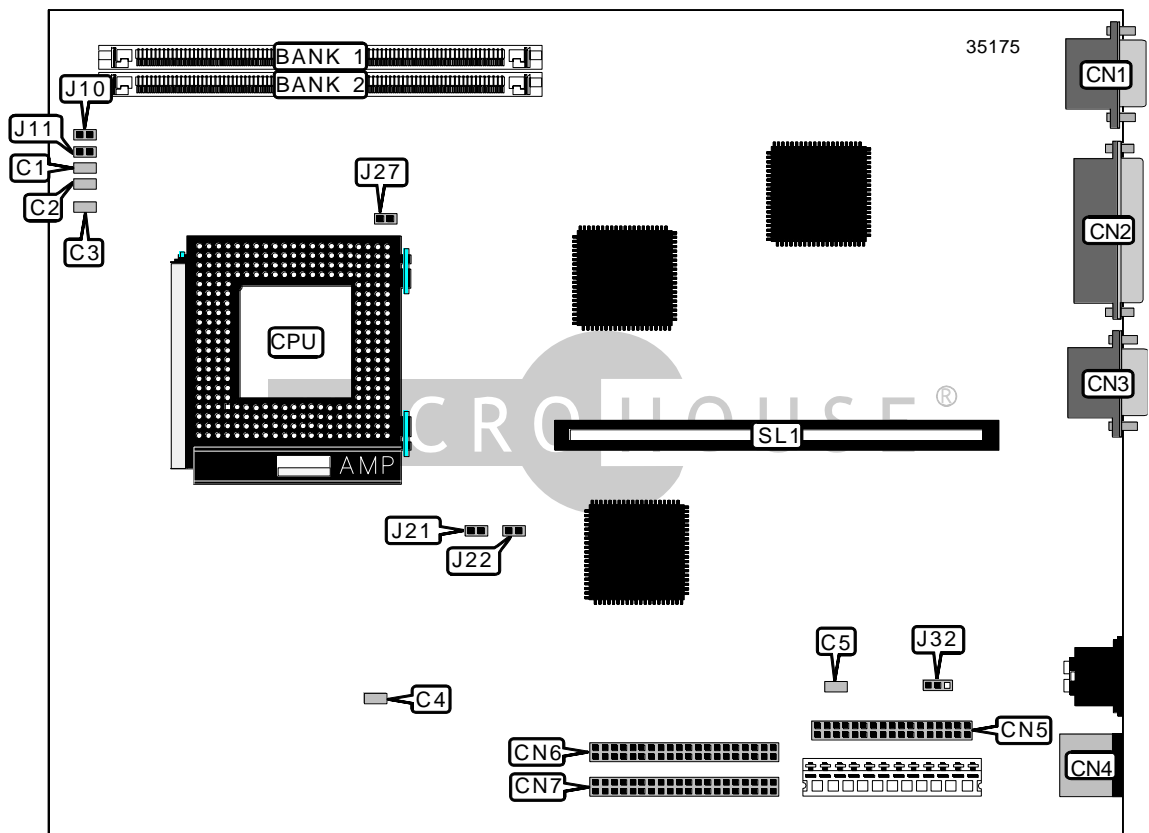


DIGITAL EQUIPMENT CORPORATION
 STARION 910, 915, 917, 920, 930, 932, 940, 942,
 2001

Device Type	Mainboard
Processor	Pentium
Processor Speed	75/100/133MHz
Chip Set	Unidentified
Video Chip Set	Unidentified
Maximum Onboard Memory	128MB
Maximum Video Memory	2MB
Cache	256KB
BIOS	Unidentified
Dimensions	254mm x 218mm
I/O Options	Floppy drive interface, IDE interfaces (2), parallel port, PS/2 mouse port, serial port, VGA port, riser slot
NPU Options	None



Continued on next page. . .

DIGITAL EQUIPMENT CORPORATION
 STARION 910, 915, 917, 920, 930, 932, 940, 942,
 2001

... continued from previous page

CONNECTIONS			
Purpose	Location	Purpose	Location
Chassis fan power	C1	PS/2 mouse port	CN4
Speaker	C2	Floppy drive interface	CN5
LED connector	C3	IDE interface	CN6
VGA port	CN1	IDE interface	CN7
Parallel port	CN2	Riser slot	SL1
Serial port	CN3		

Note: VGA & serial port are shown for informational purposes only. The location may not be exact.

USER CONFIGURABLE SETTINGS		
Function	Label	Position
í Factory configured - do not alter	C4	Unidentified
í Factory configured - do not alter	C5	Unidentified
í Recovery mode normal operation	J10	Open
Recovery mode enabled	J10	Closed
í Password normal operation	J11	Open
Password memory clear	J11	Closed
í BIOS boot block disabled	J32	Pins 2 & 3 closed
BIOS boot block enabled	J32	Pins 1 & 2 closed
CPU frequency select 2/1	J27	Closed

SIMM CONFIGURATION			
Size	Bank 0	Bank 1	Bank 2
8MB	8MB	None	None
16MB	8MB	(1) 1M x 36	(1) 1M x 36
24MB	8MB	(1) 2M x 36	(1) 2M x 36
40MB	8MB	(1) 4M x 36	(1) 4M x 36
72MB	8MB	(1) 8M x 36	(1) 8M x 36
128MB	Disabled	(1) 16M x 36	(1) 16M x 36

Note: Bank 0 is factory installed and is not configurable. The location is unidentified. Some boards have 16MB factory installed.

CACHE CONFIGURATION
Note: Board is factory installed with 256KB cache. The location is unidentified.

Continued on next page...

DIGITAL EQUIPMENT CORPORATION
STARION 910, 915, 917, 920, 930, 932, 940, 942,
2001

... continued from previous page

VIDEO MEMORY CONFIGURATION

Note: Board is factory installed with 1MB cache. The location is unidentified. Models 930, 932, 940, 942 can be upgraded to 2MB.

CPU SPEED SELECTION

CPU speed	Clock speed	Multiplier	J21	J22
75MHz	50MHz	1.5x	Open	Open
100MHz	66MHz	1.5x	Closed	Closed
133MHz	66MHz	2x	Closed	Closed