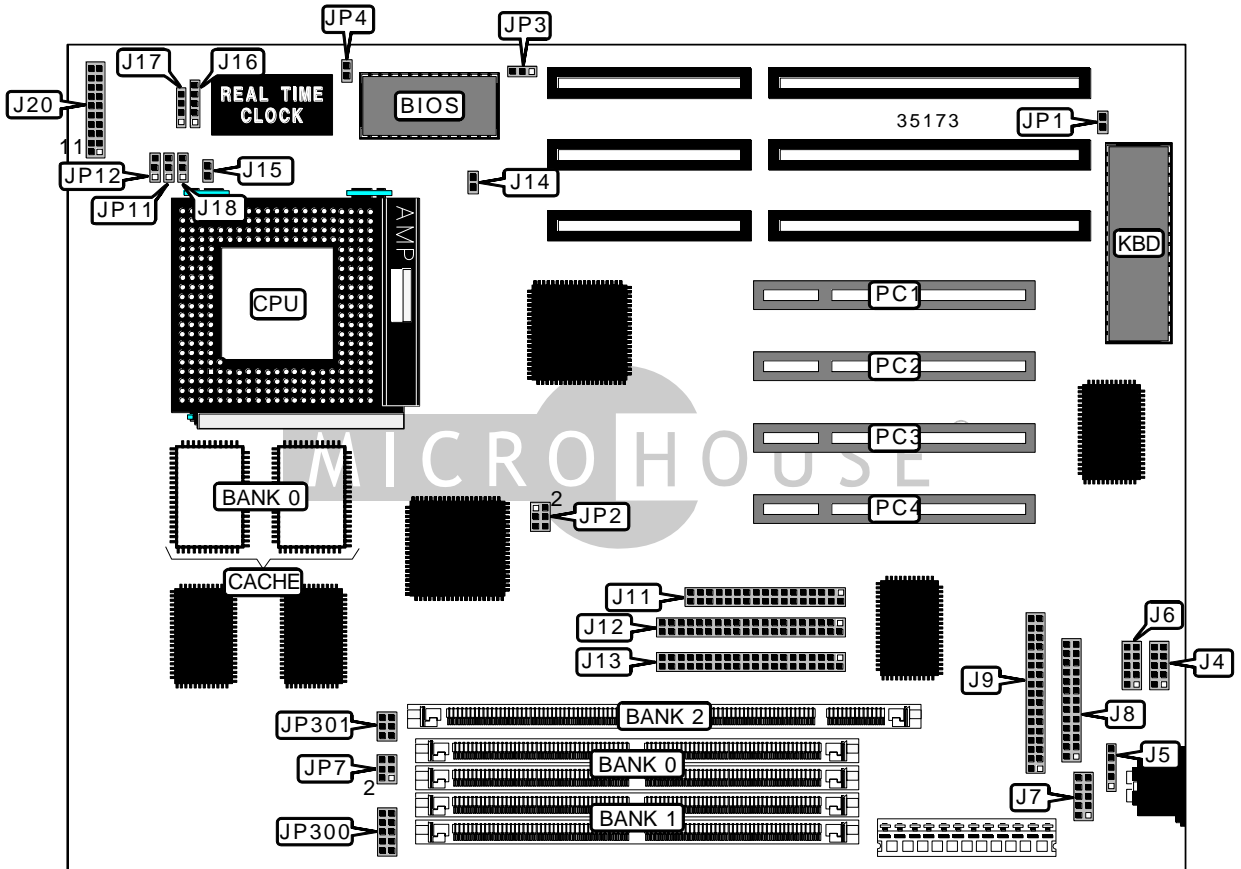


ELITEGROUP COMPUTER SYSTEMS, INC.

P5VX-BE (VER. 3.0)

Device Type	Mainboard
Processor	CX 6X86/IBM 6X86/CX 686MX/AM K5/AM K6/Pentium
Processor Speed	75/90/100/120/133/150/166/200MHz
Chip Set	Intel
Video Chip Set	None
Maximum Onboard Memory	128MB (EDO & SDRAM supported)
Maximum Video Memory	None
Cache	256/512KB
BIOS	Award
Dimensions	254mm x 218mm
I/O Options	32-bit PCI slots (4), floppy drive interface, green PC connector, IDE interfaces (2), parallel port, PS/2 mouse interface, serial ports (2), IR connectors (2), USB connectors (2)
NPU Options	None



Continued on next page...

ELITEGROUP COMPUTER SYSTEMS, INC.
P5VX-BE (VER. 3.0)

... continued from previous page

CONNECTIONS			
Purpose	Location	Purpose	Location
Serial port 2	J4	IDE interface LED	J15
PS/2 mouse interface	J5	IR connector (HP)	J16
Serial port 1	J6	IR connector (IBM)	J17
USB connector	J7	CPU fan power	J18
Parallel port	J8	Power on LED	J20/pins 2 & 3
Audio connector	J9	Green PC connector	J20/pins 4 & 5
Floppy drive interface	J11	Reset switch	J20/pins 9 & 10
IDE interface 1	J12	Power LED & keylock	J20/pins 11 - 15
IDE interface 2	J13	Speaker	J20/pins 17 - 20
Green PC LED	J14	32-bit PCI slots	PC1 – PC4

USER CONFIGURABLE SETTINGS		
Function	Label	Position
í Password normal operation	JP1	Open
Password clear	JP1	Closed
í Factory configured - do not alter	JP3	Unidentified
í CMOS memory normal operation	JP4	Open
CMOS memory clear	JP4	Closed
í Factory configured - do not alter	JP7	Unidentified

SIMM CONFIGURATION		
Size	Bank 0	Bank 1
8MB	(2) 1M x 36	None
16MB	(2) 2M x 36	None
16MB	(2) 1M x 36	(2) 1M x 36
24MB	(2) 2M x 36	(2) 1M x 36
32MB	(2) 4M x 36	None
32MB	(2) 2M x 36	(2) 2M x 36
40MB	(2) 4M x 36	(2) 1M x 36
48MB	(2) 4M x 36	(2) 2M x 36
64MB	(2) 8M x 36	None
64MB	(2) 4M x 36	(2) 4M x 36

Continued on next page...

ELITEGROUP COMPUTER SYSTEMS, INC.
P5VX-BE (VER. 3.0)

... continued from previous page

SIMM CONFIGURATION (CON'T)		
Size	Bank 0	Bank 1
72MB	(2) 8M x 36	(2) 1M x 36
80MB	(2) 8M x 36	(2) 2M x 36
96MB	(2) 8M x 36	(2) 4M x 36
128MB	(2) 8M x 36	(2) 8M x 36

Note: Board accepts EDO memory.

DIMM CONFIGURATION	
Size	Bank 2
8MB	(1) 1M x 64
16MB	(1) 2M x 64
32MB	(1) 4M x 64
64MB	(1) 8M x 64
128MB	(1) 16M x 64

Note: Board accepts SDRAM memory.

CACHE CONFIGURATION	
Size	Bank 0
256KB	(2) 32K x 32
512KB	(2) 64K x 32

CPU SPEED SELECTION (CX 6X86)					
CPU speed	Clock speed	Multiplier	JP2	JP11	JP12
120MHz	50MHz	2x	1 & 2, 3 & 4, 5 & 6	2 & 3	1 & 2
133MHz	55MHz	2x	1 & 2, 3 & 4	2 & 3	1 & 2
150MHz	60MHz	2x	3 & 4, 5 & 6	2 & 3	1 & 2
166MHz	66MHz	2x	1 & 2, 5 & 6	2 & 3	1 & 2

Note: Pins designated should be in the closed position.

CPU SPEED SELECTION (IBM 6X86)					
CPU speed	Clock speed	Multiplier	JP2	JP11	JP12
120MHz	50MHz	2x	1 & 2, 3 & 4, 5 & 6	2 & 3	1 & 2
133MHz	55MHz	2x	1 & 2, 3 & 4	2 & 3	1 & 2
150MHz	60MHz	2x	3 & 4, 5 & 6	2 & 3	1 & 2
166MHz	66MHz	2x	1 & 2, 5 & 6	2 & 3	1 & 2

Note: Pins designated should be in the closed position.

Continued on next page. . .

ELITEGROUP COMPUTER SYSTEMS, INC.
P5VX-BE (VER. 3.0)

... continued from previous page

CPU SPEED SELECTION (CX 6X86MX)					
CPU speed	Clock speed	Multiplier	JP2	JP11	JP12
166MHz	66MHz	2x	1 & 2, 5 & 6	2 & 3	1 & 2
200MHz	66MHz	3x	1 & 2, 5 & 6	1 & 2	2 & 3

Note: Pins designated should be in the closed position.

CPU SPEED SELECTION (AM K5)					
CPU speed	Clock speed	Multiplier	JP2	JP11	JP12
75MHz	50MHz	1.5x	1 & 2, 3 & 4, 5 & 6	1 & 2	1 & 2
90MHz	60MHz	1.5x	3 & 4, 5 & 6	1 & 2	1 & 2
100MHz	66MHz	1.5x	1 & 2, 5 & 6	1 & 2	1 & 2
120MHz	60MHz	1.5x	3 & 4, 5 & 6	1 & 2	1 & 2
133MHz	66MHz	1.5x	1 & 2, 5 & 6	1 & 2	1 & 2
150MHz	60MHz	2x	3 & 4, 5 & 6	2 & 3	1 & 2
166MHz	66MHz	2x	1 & 2, 5 & 6	2 & 3	1 & 2

Note: Pins designated should be in the closed position.

CPU SPEED SELECTION (AM K6)					
CPU speed	Clock speed	Multiplier	JP2	JP11	JP12
166MHz	66MHz	2.5x	1 & 2, 5 & 6	2 & 3	2 & 3
200MHz	66MHz	3x	1 & 2, 5 & 6	1 & 2	2 & 3

Note: Pins designated should be in the closed position.

CPU SPEED SELECTION (INTEL)					
CPU speed	Clock speed	Multiplier	JP2	JP11	JP12
75MHz	50MHz	1.5x	1 & 2, 3 & 4, 5 & 6	1 & 2	1 & 2
90MHz	60MHz	1.5x	3 & 4, 5 & 6	1 & 2	1 & 2
100MHz	66MHz	1.5x	1 & 2, 5 & 6	1 & 2	1 & 2
120MHz	60MHz	2x	3 & 4, 5 & 6	2 & 3	1 & 2
133MHz	66MHz	2x	1 & 2, 5 & 6	2 & 3	1 & 2
150MHz	60MHz	2.5x	3 & 4, 5 & 6	2 & 3	2 & 3
166MHz	66MHz	2.5x	1 & 2, 5 & 6	2 & 3	2 & 3
200MHz	66MHz	3x	1 & 2, 5 & 6	1 & 2	2 & 3

Note: Pins designated should be in the closed position.

Continued on next page. . .

ELITEGROUP COMPUTER SYSTEMS, INC.
P5VX-BE (VER. 3.0)

... continued from previous page

CPU SPEED SELECTION (INTEL MMX)					
CPU speed	Clock speed	Multiplier	JP2	JP11	JP12
166MHz	66MHz	2.5x	1 & 2, 5 & 6	2 & 3	2 & 3
200MHz	66MHz	3x	1 & 2, 5 & 6	1 & 2	2 & 3

Note: Pins designated should be in the closed position.

CPU VOLTAGE SELECTION (SINGLE)	
Voltage	JP301
Single	Pins 1 & 2, 3 & 4, 5 & 6 closed
Dual	Open

CPU VOLTAGE SELECTION (DUAL)	
Voltage	JP300
2.54v	Pins 1 & 2, closed
2.84v	Pins 3 & 4 closed
2.94v	Pins 5 & 6 closed
3.24v	Pins 7 & 8 closed
3.34v	Pins 9 & 10 closed