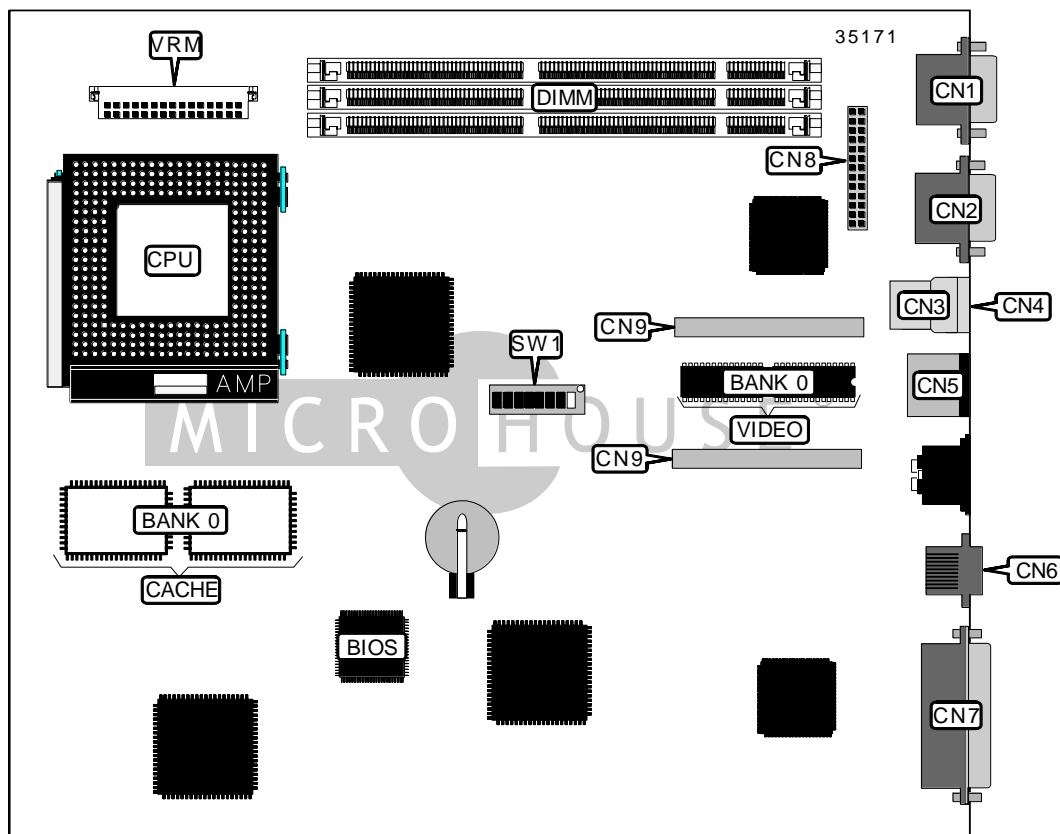


# DIGITAL EQUIPMENT CORPORATION

## PC 5100

<b>Device Type</b>	Mainboard
<b>Processor</b>	AM K5/AM K6/Pentium
<b>Processor Speed</b>	90/120/133/150/166/200/233/266/300/333/366MHz
<b>Chip Set</b>	Intel
<b>Video Chip Set</b>	S3
<b>Maximum Onboard Memory</b>	256MB (SDRAM supported)
<b>Maximum Video Memory</b>	4MB
<b>Cache</b>	256/512KB
<b>BIOS</b>	Unidentified
<b>Dimensions</b>	254mm x 218mm
<b>I/O Options (mainboard)</b>	Ethernet 10BaseT connector, parallel port, PS/2 mouse port, serial ports (2), VGA feature connector, VGA port, USB connectors (2), VRM connector
<b>I/O Options (backplane)</b>	IDE interfaces (2), floppy drive interface, audio in – CD-ROM, fax/modem connector 32-bit PCI slots (2 or 3)
<b>NPU Options</b>	None



*Continued on next page. . .*

DIGITAL EQUIPMENT CORPORATION  
PC 5100

... continued from previous page

CONNECTIONS			
Purpose	Location	Purpose	Location
Serial port	CN1	Ethernet 10BaseT connector	CN6
VGA port	CN2	Parallel port	CN7
USB connector	CN3	VGA feature connector	CN8
USB connector	CN4	VRM connector	VRM
PS/2 mouse port	CN5		

USER CONFIGURABLE SETTINGS		
Function	Label	Position
í Password normal operation	SW1/2	Off
Password clear	SW1/2	On
í BIOS normal operation	SW1/3	Off
BIOS recovery mode	SW1/3	On
í CMOS memory normal operation	SW1/4	Off
CMOS memory clear	SW1/4	On
í BIOS write disabled	SW1/5	Off
BIOS write enabled	SW1/5	On

DIMM CONFIGURATION			
Size	Bank 0	Bank 1	Bank 2
16MB	(1) 2M x 64	None	None
16MB	(1) 1M x 64	(1) 1M x 64	None
24MB	(1) 2M x 64	(1) 1M x 64	None
24MB	(1) 1M x 64	(1) 1M x 64	(1) 1M x 64
32MB	(1) 4M x 64	None	None
32MB	(1) 2M x 64	(1) 1M x 64	(1) 1M x 64
32MB	(1) 2M x 64	(1) 2M x 64	None
40MB	(1) 4M x 64	(1) 1M x 64	None
40MB	(1) 2M x 64	(1) 2M x 64	(1) 1M x 64
48MB	(1) 4M x 64	(1) 1M x 64	(1) 1M x 64
48MB	(1) 4M x 64	(1) 2M x 64	None
48MB	(1) 2M x 64	(1) 2M x 64	(1) 2M x 64
56MB	(1) 4M x 64	(1) 2M x 64	(1) 1M x 64
64MB	(1) 8M x 64	None	None
64MB	(1) 4M x 64	(1) 2M x 64	(1) 2M x 64

Continued on next page. . .

DIGITAL EQUIPMENT CORPORATION  
PC 5100

... continued from previous page

DIMM CONFIGURATION (CON'T)			
Size	Bank 0	Bank 1	Bank 2
64MB	(1) 4M x 64	(1) 4M x 64	None
72MB	(1) 8M x 64	(1) 1M x 64	None
72MB	(1) 4M x 64	(1) 4M x 64	(1) 1M x 64
80MB	(1) 8M x 64	(1) 1M x 64	(1) 1M x 64
80MB	(1) 8M x 64	(1) 2M x 64	None
80MB	(1) 4M x 64	(1) 4M x 64	(1) 2M x 64
88MB	(1) 8M x 64	(1) 2M x 64	(1) 1M x 64
96MB	(1) 8M x 64	(1) 2M x 64	(1) 2M x 64
96MB	(1) 8M x 64	(1) 4M x 64	None
96MB	(1) 4M x 64	(1) 4M x 64	(1) 4M x 64
104MB	(1) 8M x 64	(1) 4M x 64	(1) 1M x 64
112MB	(1) 8M x 64	(1) 4M x 64	(1) 2M x 64
128MB	(1) 16M x 64	None	None
128MB	(1) 8M x 64	(1) 4M x 64	(1) 4M x 64
128MB	(1) 8M x 64	(1) 8M x 64	None
136MB	(1) 16M x 64	(1) 1M x 64	None
136MB	(1) 8M x 64	(1) 8M x 64	(1) 1M x 64
144MB	(1) 16M x 64	(1) 1M x 64	(1) 1M x 64
144MB	(1) 16M x 64	(1) 2M x 64	None
144MB	(1) 8M x 64	(1) 8M x 64	(1) 2M x 64
152MB	(1) 16M x 64	(1) 2M x 64	(1) 1M x 64
160MB	(1) 16M x 64	(1) 2M x 64	(1) 2M x 64
160MB	(1) 16M x 64	(1) 4M x 64	None
160MB	(1) 8M x 64	(1) 8M x 64	(1) 4M x 64
168MB	(1) 16M x 64	(1) 4M x 64	(1) 1M x 64
176MB	(1) 16M x 64	(1) 4M x 64	(1) 2M x 64
192MB	(1) 16M x 64	(1) 4M x 64	(1) 4M x 64
192MB	(1) 16M x 64	(1) 8M x 64	None
192MB	(1) 8M x 64	(1) 8M x 64	(1) 8M x 64
200MB	(1) 16M x 64	(1) 8M x 64	(1) 1M x 64
208MB	(1) 16M x 64	(1) 8M x 64	(1) 2M x 64
224MB	(1) 16M x 64	(1) 8M x 64	(1) 4M x 64
256MB	(1) 16M x 64	(1) 8M x 64	(1) 8M x 64

Note: Board accepts SDRAM memory.

Continued on next page...

DIGITAL EQUIPMENT CORPORATION  
PC 5100

... continued from previous page

CACHE CONFIGURATION	
Size	Bank 0
256KB	(2) 32K x 32
512KB	(2) 64K x 32

**VIDEO MEMORY CONFIGURATION**  
Note: 2MB video memory is factory installed and is not configurable. To increase to 4MB, install upgrade module at CN9.

CPU SPEED SELECTION (AM K5)						
CPU speed	Clock speed	Multiplier	SW1/1	SW1/6	SW1/7	SW1/8
90MHz	60MHz	1.5x	Off	Off	Off	Off
120MHz	60MHz	2x	Off	Off	On	Off
133MHz	66MHz	2x	On	Off	On	Off
150MHz	60MHz	2.5x	Off	Off	On	On
166MHz	66MHz	2.5x	On	Off	On	On
200MHz	66MHz	3x	On	Off	Off	On

CPU SPEED SELECTION (AM K6)						
CPU speed	Clock speed	Multiplier	SW1/1	SW1/6	SW1/7	SW1/8
166MHz	66MHz	2.5x	On	Off	On	On
200MHz	66MHz	3x	On	Off	Off	On
233MHz	66MHz	3.5x	On	Off	Off	Off
266MHz	66MHz	4x	On	On	On	Off
300MHz	66MHz	4.5x	On	On	On	On
333MHz	66MHz	5x	On	On	Off	On
366MHz	66MHz	5.5x	On	On	Off	Off

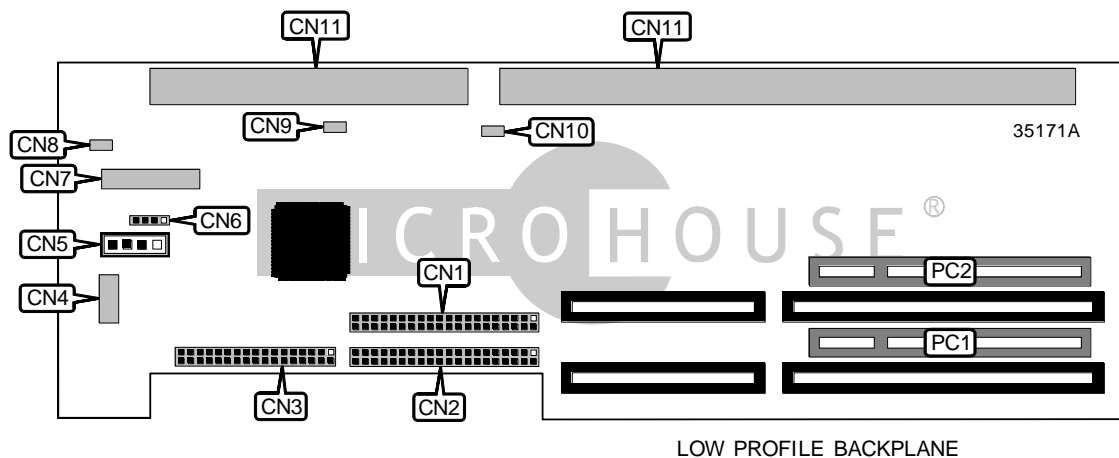
CPU SPEED SELECTION (INTEL)						
CPU speed	Clock speed	Multiplier	SW1/1	SW1/6	SW1/7	SW1/8
90MHz	60MHz	1.5x	Off	Off	Off	Off
120MHz	60MHz	2x	Off	Off	On	Off
133MHz	66MHz	2x	On	Off	On	Off
150MHz	60MHz	2.5x	Off	Off	On	On
166MHz	66MHz	2.5x	On	Off	On	On
200MHz	66MHz	3x	On	Off	Off	On

Continued on next page...

DIGITAL EQUIPMENT CORPORATION  
PC 5100

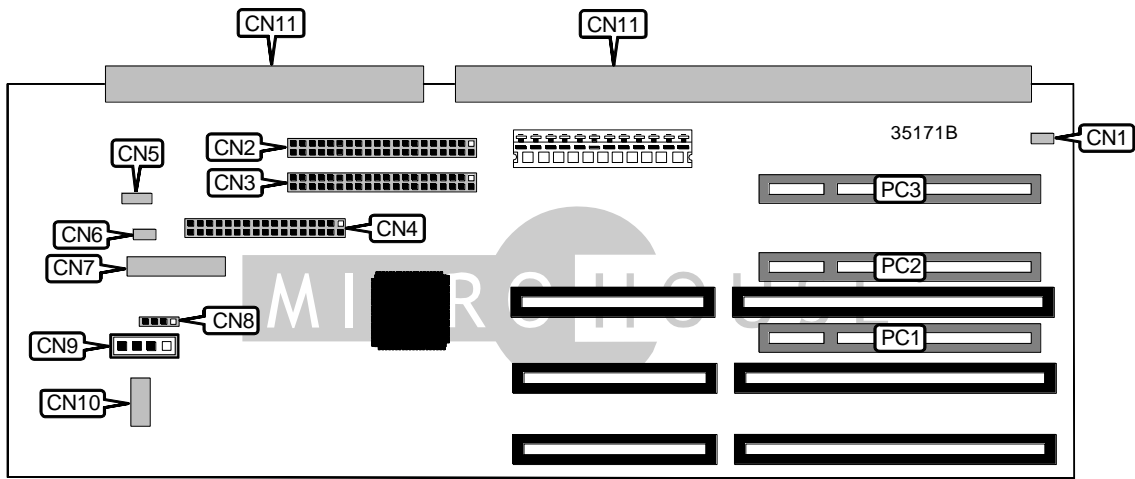
... continued from previous page

CPU SPEED SELECTION (INTEL MMX)						
CPU speed	Clock speed	Multiplier	SW1/1	SW1/6	SW1/7	SW1/8
166MHz	66MHz	2.5x	On	Off	On	On
200MHz	66MHz	3x	On	Off	Off	On
233MHz	66MHz	3.5x	On	Off	Off	Off



CONNECTIONS			
Purpose	Location	Purpose	Location
IDE interface 1	CN1	Control panel connector	CN7
IDE interface 2	CN2	Chassis fan power	CN8
Floppy drive interface	CN3	SCSI interface LED	CN9
Audio rear panel connector	CN4	Micro switch connector	CN10
Audio in – CD-ROM	CN5	Main logic board connector	CN11
Fax/modem connector	CN6	32-bit PCI slots	PC1 – PC2

Note: A power connector is located on the reverse side of this card.



SHORT TOWER BACKPLANE

CONNECTIONS			
Purpose	Location	Purpose	Location
Micro switch connector	CN1	Control panel connector	CN7
IDE interface 1	CN2	Fax/modem connector	CN8
IDE interface 2	CN3	Audio in – CD-ROM	CN9
Floppy drive interface	CN4	Audio rear panel connector	CN10
SCSI interface LED	CN5	Main logic board connector	CN11
Chassis fan power	CN6	32-bit PCI slots	PC1 – PC3