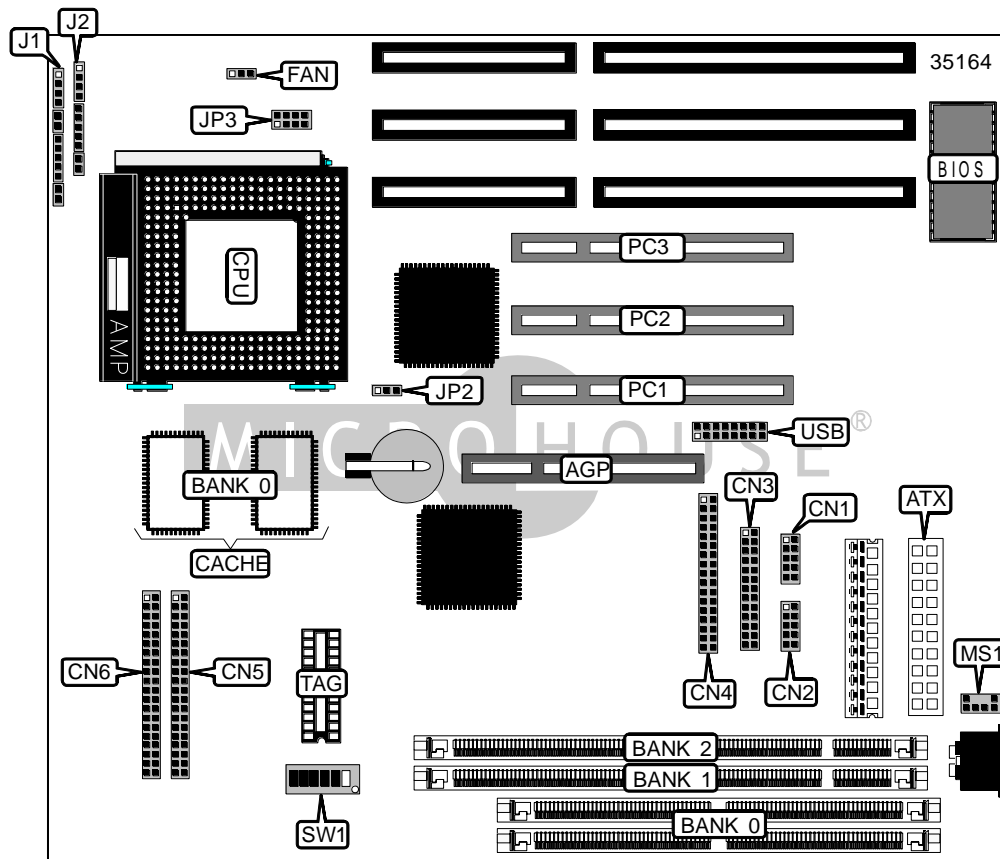


SOLTEK COMPUTER, INC.

SL-54T5

Device Type	Mainboard
Processor	CX 6X86/CX 6X86L/CX 6X86MX/AM K5/AM K6/Pentium/Pentium MMX
Processor Speed	90/100/120/133/150/166/180/200/233/266MHz
Chip Set	VIA Apollo VP3
Maximum Onboard Memory	1GB (EDO & SDRAM supported)
Cache	512KB
BIOS	Award
I/O Options	32-bit PCI slots (3), floppy drive interface, IDE interfaces (2), parallel port, PS/2 mouse interface, serial ports (2), IR connector, USB connector (2), ATX power connector
Dimensions	240mm x 220mm



Continued on next page. . .

SOLTEK COMPUTER, INC.
SL - 54 T5

... continued from previous page

CONNECTIONS			
Purpose	Location	Purpose	Location
AGP slot	AGP	IR connector	J1/pins 6 - 10
ATX power connector	ATX	Power switch	J1/pins 12 & 13
Serial port 1	CN1	Speaker	J2/pins 1 - 4
Serial port 2	CN2	Reset switch	J2/pins 5 & 6
Parallel port	CN3	Power LED & Keylock	J2/pins 8 - 12
Floppy drive interface	CN4	Turbo LED	J2/pins 14 & 15
IDE interface 1	CN5	PS/2 mouse interface	MS1
IDE interface 2	CN6	32-bit PCI slots	PC1 - PC3
CPU fan power	FAN	USB connector	USB
IDE interface LED	J1/pins 1 - 4		

USER CONFIGURABLE SETTINGS		
Function	Label	Position
í CMOS memory normal operation	JP2	Pins 1 & 2 closed
CMOS memory clear	JP2	Pins 2 & 3 closed

DRAM CONFIGURATION			
Size	Bank 0	Bank 1	Bank 2
8MB	(2) 1MB x 36	None	None
8MB	None	(1) 1MB x 64	None
16MB	(2) 1MB x 36	(1) 1MB x 64	None
16MB	(2) 2MB x 36	None	None
16MB	None	(1) 2MB x 64	None
24MB	(2) 1MB x 36	(1) 1MB x 64	(1) 1MB x 64
24MB	(2) 2MB x 36	(1) 1MB x 64	None
32MB	(2) 2MB x 36	(1) 2MB x 64	None
32MB	(2) 4MB x 36	None	None
32MB	None	(1) 4MB x 64	None
40MB	(2) 2MB x 36	(1) 2MB x 64	(2) 1MB x 64
40MB	(2) 4MB x 36	(1) 1MB x 64	None
48MB	(2) 2MB x 36	(1) 2MB x 64	(2) 2MB x 64
48MB	(2) 4MB x 36	(1) 2MB x 64	None
64MB	(2) 4MB x 36	(1) 4MB x 64	None
64MB	(2) 8MB x 36	None	None
64MB	None	(1) 8MB x 64	None
72MB	(2) 4MB x 36	(1) 4MB x 64	(1) 1MB x 64
72MB	(2) 8MB x 36	(1) 1MB x 64	None
80MB	(2) 4MB x 36	(1) 4MB x 64	(1) 2MB x 64
80MB	(2) 8MB x 36	(1) 2MB x 64	None
96MB	(2) 4MB x 36	(1) 4MB x 64	(1) 4MB x 64
96MB	(2) 8MB x 36	(1) 4MB x 64	None
128MB	(2) 8MB x 36	(1) 8MB x 64	None
128MB	(2) 16MB x 36	None	None
128MB	None	(1) 16MB x 64	None
136MB	(2) 16MB x 36	(1) 1MB x 64	None
144MB	(2) 16MB x 36	(1) 2MB x 64	None

Continued on next page. . .

SOLTEK COMPUTER, INC.
SL - 5 4 T 5

... continued from previous page

DRAM CONFIGURATION			
Size	Bank 0	Bank 1	Bank 2
160MB	(2) 16MB x 36	(1) 4MB x 64	None
192MB	(2) 16MB x 36	(1) 8MB x 64	None
256MB	(2) 16MB x 36	(1) 16MB x 64	None
256MB	(2) 32MB x 36	None	None
256MB	None	(1) 32MB x 64	None
264MB	(2) 16MB x 36	(1) 16MB x 64	(1) 1MB x 64
264MB	(2) 32MB x 36	(1) 1MB x 64	None
272MB	(2) 32MB x 36	(1) 2MB x 64	None
272MB	(2) 16MB x 36	(1) 16MB x 64	(1) 2MB x 64
288MB	(2) 16MB x 36	(1) 16MB x 64	(1) 4MB x 64
288MB	(2) 32MB x 36	(1) 4MB x 64	None
320MB	(2) 16MB x 36	(1) 16MB x 64	(1) 8MB x 64
320MB	(2) 32MB x 36	(1) 8MB x 64	None
384MB	(2) 16MB x 36	(1) 16MB x 64	(1) 16MB x 64
384MB	(2) 32MB x 36	(1) 16MB x 64	None
512MB	(2) 32MB x 36	(1) 32MB x 64	None
520MB	(2) 32MB x 36	(1) 32MB x 64	(1) 1MB x 64
528MB	(2) 32MB x 36	(1) 32MB x 64	(1) 2MB x 64
544MB	(2) 32MB x 36	(1) 32MB x 64	(1) 4MB x 64
618MB	(2) 32MB x 36	(1) 32MB x 64	(1) 8MB x 64
640MB	(2) 32MB x 36	(1) 32MB x 64	(1) 16MB x 64
768MB	(2) 32MB x 36	(1) 32MB x 64	(1) 32MB x 64
1024MB	None	(1) 64MB x 64	(1) 64MB x 64

CPU SPEED SELECTION (CX 6X86)								
CPU Speed	Clock Speed	Multiplier	SW1/1	SW1/2	SW1/3	SW1/4	SW1/5	SW1/6
133MHz	55MHz	2x	Off	Off	On	On	Off	Off
150MHz	60MHz	2x	On	Off	Off	On	Off	Off
166MHz	66MHz	2x	Off	Off	Off	On	Off	Off
200MHz	75MHz	2x	Off	On	Off	On	Off	Off

CPU SPEED SELECTION (CX 6X86L)								
CPU Speed	Clock Speed	Multiplier	SW1/1	SW1/2	SW1/3	SW1/4	SW1/5	SW1/6
133MHz	55MHz	2x	Off	Off	On	On	Off	Off
150MHz	60MHz	2x	On	Off	Off	On	Off	Off
166MHz	66MHz	2x	Off	Off	Off	On	Off	Off
200MHz	75MHz	2x	Off	On	Off	On	Off	Off

Continued on next page. . .

SOLTEK COMPUTER, INC.
SL - 5 4 T 5

... continued from previous page

CPU SPEED SELECTION (CX 6X86MX)								
CPU Speed	Clock Speed	Multiplier	SW1/1	SW1/2	SW1/3	SW1/4	SW1/5	SW1/6
150MHz	55MHz	2x	Off	Off	Off	On	Off	Off
166MHz	60MHz	2.5x	On	Off	Off	On	On	Off
166MHz	66MHz	2x	Off	Off	Off	On	Off	Off
200MHz	66MHz	2.5x	Off	Off	Off	On	On	Off
200MHz	75MHz	2x	Off	On	Off	On	Off	Off
233MHz	66MHz	3x	Off	Off	Off	Off	On	Off
233MHz	75MHz	2.5x	Off	On	Off	On	On	Off
266MHz	75MHz	3x	Off	On	Off	Off	On	Off

CPU SPEED SELECTION (AM K5)								
CPU Speed	Clock Speed	Multiplier	SW1/1	SW1/2	SW1/3	SW1/4	SW1/5	SW1/6
90MHz	60MHz	1.5x	On	Off	Off	Off	Off	Off
100MHz	66MHz	1.5x	Off	Off	Off	Off	Off	Off
120MHz	60MHz	1.5x	On	Off	Off	Off	Off	Off
133MHz	66MHz	1.5x	Off	Off	Off	Off	Off	Off
166MHz	66MHz	2.5x	Off	Off	Off	On	On	Off
200MHz	66MHz	3x	Off	Off	Off	Off	On	Off

CPU SPEED SELECTION (AM K6)								
CPU Speed	Clock Speed	Multiplier	SW1/1	SW1/2	SW1/3	SW1/4	SW1/5	SW1/6
166MHz	66MHz	2.5x	Off	Off	Off	On	On	Off
200MHz	66MHz	3x	Off	Off	Off	Off	On	Off
233MHz	66MHz	3.5x	Off	Off	Off	Off	Off	Off

CPU SPEED SELECTION (INTEL)								
CPU Speed	Clock Speed	Multiplier	SW1/1	SW1/2	SW1/3	SW1/4	SW1/5	SW1/6
90MHz	60MHz	1.5x	On	Off	Off	Off	Off	Off
100MHz	66MHz	1.5x	Off	Off	Off	Off	Off	Off
120MHz	60MHz	2x	On	Off	Off	On	Off	Off
133MHz	66MHz	2x	Off	Off	Off	On	Off	Off
150MHz	60MHz	2.5x	On	Off	Off	On	On	Off
166MHz	66MHz	2.5x	Off	Off	Off	On	On	Off
200MHz	66MHz	3x	Off	Off	Off	Off	On	Off

CPU SPEED SELECTION (INTEL MMX)								
CPU Speed	Clock Speed	Multiplier	SW1/1	SW1/2	SW1/3	SW1/4	SW1/5	SW1/6
166MHz	66MHz	2.5x	Off	Off	Off	On	On	Off
200MHz	66MHz	3x	Off	Off	Off	Off	On	Off
233MHz	66MHz	3.5x	Off	Off	Off	Off	Off	Off

Continued on next page. . .

SOLTEK COMPUTER, INC.
SL - 5 4 T 5

... continued from previous page

CPU CORE VOLTAGE SELECTION	
Voltage	JP3
2.0v	Open
2.1v	Pins 1 & 2 closed
2.2v	Pins 3 & 4 closed
2.3v	Pins 1 & 2, 3 & 4 closed
2.4v	Pins 5 & 6 closed
2.5v	Pins 1 & 2, 5 & 6 closed
2.6v	Pins 3 & 4, 5 & 6 closed
2.7v	Pins 1 & 2, 3 & 4, 5 & 6 closed
2.8v	Pins 7 & 8 closed
2.9v	Pins 1 & 2, 7 & 8 closed
3.0v	Pins 3 & 4, 7 & 8 closed
3.1v	Pins 1 & 2, 3 & 4, 7 & 8 closed
3.2v	Pins 5 & 6, 7 & 8 closed
3.3v	Pins 1 & 2, 5 & 6, 7 & 8 closed
3.4v	Pins 3 & 4, 5 & 6, 7 & 8 closed
3.5v	Pins 1 & 2, 3 & 4, 5 & 6, 7 & 8 closed