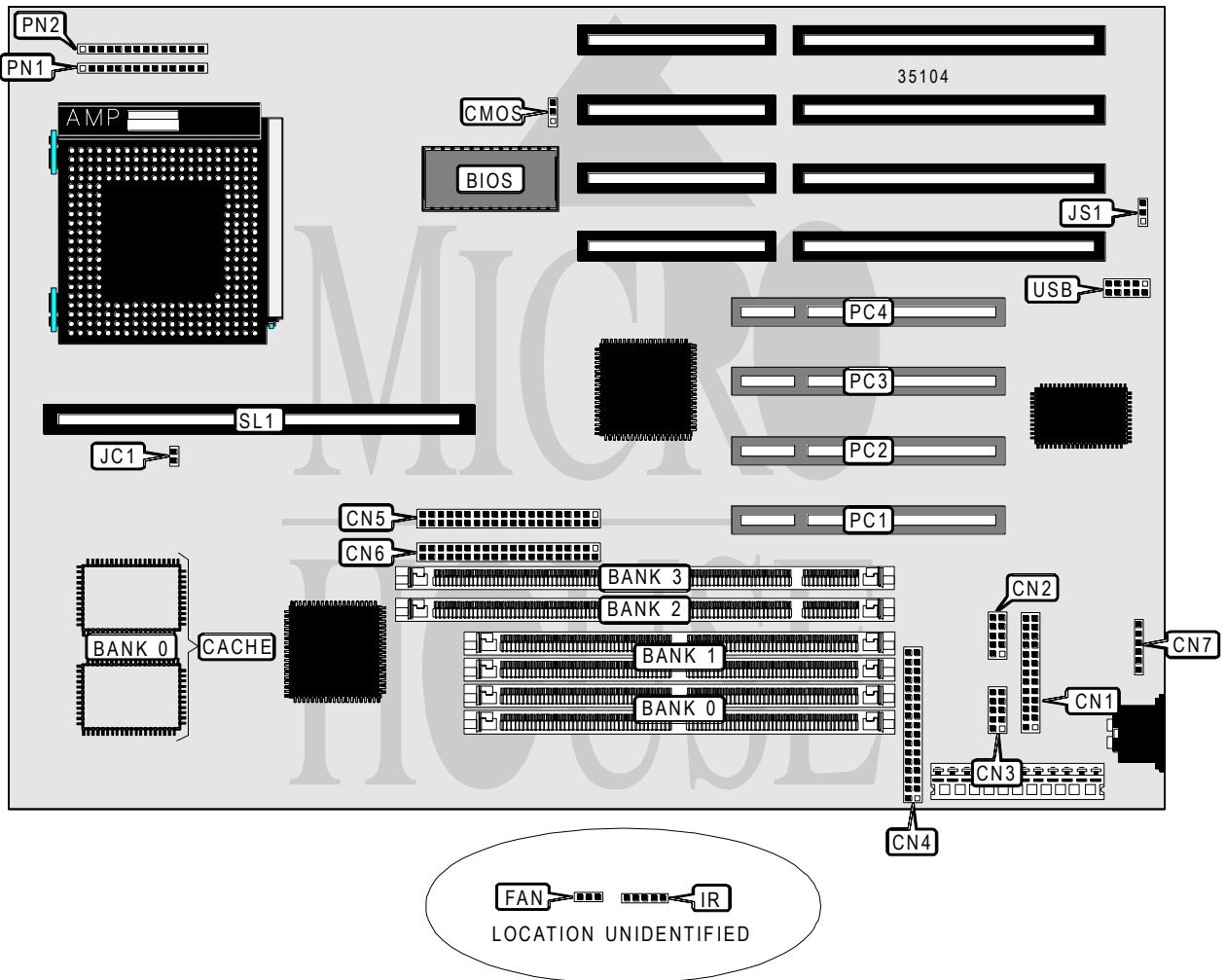


# ABIT COMPUTER CORPORATION IT 5 V

<b>Processor</b>	CX M1/AM K5/Pentium
<b>Processor Speed</b>	75/90/100/120/133/150/166/180/200MHz
<b>Chip Set</b>	Intel
<b>Video Chip Set</b>	None
<b>Maximum Onboard Memory</b>	128MB (EDO supported)
<b>Maximum Video Memory</b>	None
<b>Cache</b>	256/512KB
<b>BIOS</b>	Award
<b>Dimensions</b>	330mm x 218mm
<b>I/O Options</b>	32-bit PCI slots (4), floppy drive interface, green PC connector, IDE interfaces (2), parallel port, PS/2 mouse interface, serial ports (2), cache slot, IR connector, USB connector
<b>NPU Options</b>	None



Continued on next page. . .

# ABIT COMPUTER CORPORATION IT5V

... continued from previous page

CONNECTIONS			
Purpose	Location	Purpose	Location
Parallel port	CN1	Power LED & keylock	PN1 pins 1 - 5
Serial port 2	CN2	IDE interface LED	PN1 pins 7 & 8
Serial port 1	CN3	Standby connector	PN1 pins 10 & 11
Floppy drive interface	CN4	Green PC connector	PN1 pins 13 & 14
IDE interface 2	CN5	Reset switch	PN2 pins 1 & 2
IDE interface 1	CN6	Speaker	PN2 pins 4 - 7
PS/2 mouse interface	CN7	Turbo LED	PN2 pins 9 & 10
IR connector	IR	Turbo switch	PN2 pins 12 - 14
Chassis fan power	FAN	Cache slot	SL1
Power control connector	JS1	USB connector	USB
32-bit PCI slots	PC1 - PC4		

USER CONFIGURABLE SETTINGS		
Function	Label	Position
í CMOS memory normal operation	CMOS	Pins 1 & 2 closed
CMOS memory clear	CMOS	Pins 2 & 3 closed
í Factory configured - do not alter	JS1	Unidentified

DIMM/DRAM CONFIGURATION				
Size	Bank 0	Bank 1	Bank 2	Bank 3
8MB	(2) 1M x 32	None	None	None
8MB	None	None	(1) 1M x 64	None
16MB	(2) 2M x 32	None	None	None
16MB	None	None	(1) 2M x 64	None
16MB	(2) 1M x 32	(2) 1M x 32	None	None
16MB	(2) 1M x 32	None	None	(1) 1M x 64
16MB	None	None	(1) 1M x 64	(1) 1M x 64
24MB	(2) 2M x 32	None	None	(1) 1M x 64
32MB	(2) 4M x 32	None	None	None
32MB	None	None	(1) 4M x 64	None
32MB	(2) 2M x 32	(2) 2M x 32	None	None
32MB	(2) 2M x 32	None	None	(1) 2M x 64
32MB	None	None	(1) 2M x 64	(1) 2M x 64
40MB	(2) 4M x 32	(2) 1M x 32	None	None
40MB	None	(2) 4M x 32	(1) 1M x 64	None
48MB	None	(2) 2M x 32	(1) 4M x 64	None
48MB	(2) 4M x 32	(2) 2M x 32	None	None
48MB	None	(2) 4M x 32	(1) 2M x 64	None

Continued on next page...

# ABIT COMPUTER CORPORATION

## IT 5 V

... continued from previous page

DIMM/DRAM CONFIGURATION (CON'T)				
Size	Bank 0	Bank 1	Bank 2	Bank 3
64MB	(2) 8M x 32	None	None	None
64MB	None	None	(1) 8M x 64	None
64MB	(2) 4M x 32	(2) 4M x 32	None	None
64MB	(2) 4M x 32	None	None	(1) 4M x 64
64MB	None	None	(1) 4M x 64	(1) 4M x 64
72MB	(2) 8M x 32	(2) 1M x 32	None	None
72MB	(2) 8M x 32	None	None	(1) 1M x 64
80MB	None	(2) 2M x 32	(1) 8M x 64	None
80MB	(2) 2M x 32	None	None	(1) 8M x 64
80MB	(2) 8M x 32	(2) 2M x 32	None	None
80MB	(2) 8M x 32	None	None	(1) 2M x 64
96MB	(2) 4M x 32	(2) 8M x 32	None	None
96MB	(2) 8M x 32	(2) 4M x 32	None	None
96MB	(2) 8M x 32	None	None	(1) 4M x 64
128MB	(2) 8M x 32	(2) 8M x 32	None	None
128MB	(2) 8M x 32	None	None	(1) 8M x 64

Note: Board accepts EDO memory.

CACHE CONFIGURATION		
Size	Bank 0	SL1
256KB (A)	(2) 32K x 32	Not installed
256KB (B)	None	256KB module installed
512KB (A)	(2) 32K x 32	256KB module installed
512KB (B)	None	512KB module installed

CACHE JUMPER CONFIGURATION	
Size	JC1
None	Open
256KB (A)	Open
256KB (B)	Open
512KB (A)	Closed
512KB (B)	Open

CPU SELECTION
Note: CPU speed and voltage configurations are set through the BIOS in the CPU Soft Menu.