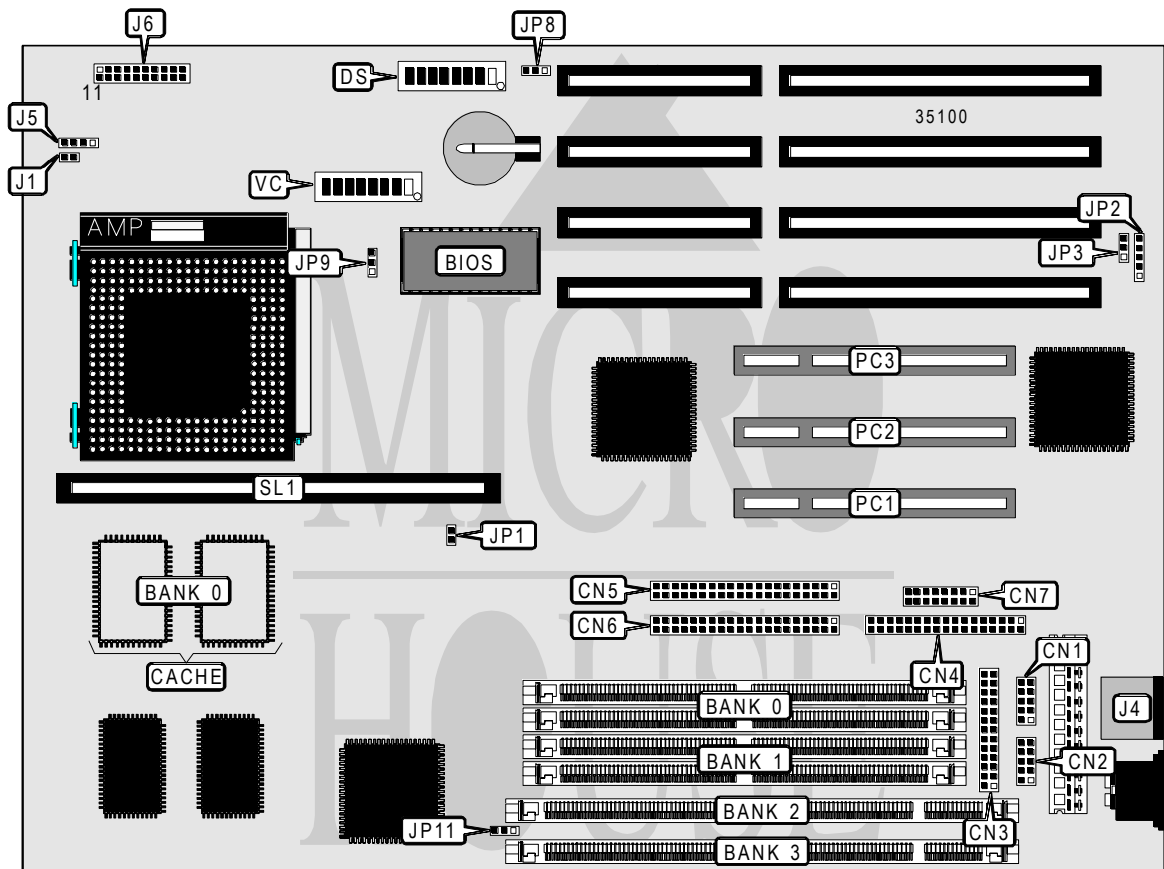


# ABIT COMPUTER CORPORATION P R 5 ( R E V . 1 . 0 1 )

<b>Processor</b>	CX M1/AM K5/Pentium
<b>Processor Speed</b>	75/90/100/120/133/150/166/200MHz
<b>Chip Set</b>	Intel
<b>Video Chip Set</b>	None
<b>Maximum Onboard Memory</b>	128MB (EDO supported)
<b>Maximum Video Memory</b>	None
<b>Cache</b>	256/512KB
<b>BIOS</b>	Award
<b>Dimensions</b>	330mm x 218mm
<b>I/O Options</b>	32-bit PCI slots (3), floppy drive interface, green PC connector, IDE interfaces (2), parallel port, PS/2 mouse port, serial ports (2), cache slot, IR connector, USB connector
<b>NPU Options</b>	None



Continued on next page . . .

# ABIT COMPUTER CORPORATION

## PR5 (REV. 1.01)

... continued from previous page

CONNECTIONS			
Purpose	Location	Purpose	Location
Serial port 1	CN1	Reset switch	J6 pins 1 & 2
Serial port 2	CN2	Green PC connector	J6 pins 6 & 7
Parallel port	CN3	Turbo LED	J6 pins 8 & 9
Floppy drive interface	CN4	Speaker	J6 pins 11 - 14
IDE interface 2	CN5	Power LED & keylock	J6 pins 16 - 20
IDE interface 1	CN6	IR connector	JP2
USB connectors	CN7	Chassis fan power	JP9
PS/2 mouse port	J4	32-bit PCI slots	PC1 - PC3
IDE interface LED	J5	Cache slot	SL1

USER CONFIGURABLE SETTINGS		
Function	Label	Position
í Factory configured - do not alter	DS8	Off
í Factory configured - do not alter	J1	Unidentified
í CMOS memory normal operation	JP3	Pins 1 & 2 closed
CMOS memory clear	JP3	Pins 2 & 3 closed
Flash BIOS voltage select 12v	JP8	Pins 2 & 3 closed
Flash BIOS voltage select 5v	JP8	Pins 1 & 2 closed
Note: JP8 may not be present on all boards.		

DIMM/DRAM CONFIGURATION				
Size	Bank 0	Bank 1	Bank 2	Bank 3
8MB	(2) 1M x 36	None	None	None
8MB	None	None	(1) 1M x 64	None
16MB	(2) 2M x 36	None	None	None
16MB	None	None	(1) 2M x 64	None
16MB	(2) 1M x 36	(2) 1M x 36	None	None
16MB	(2) 1M x 36	None	None	(1) 1M x 64
16MB	None	None	(1) 1M x 64	(1) 1M x 64
32MB	(2) 4M x 36	None	None	None
32MB	None	None	(1) 4M x 64	None
32MB	(2) 2M x 36	(2) 2M x 36	None	None
32MB	None	None	(1) 2M x 64	(1) 2M x 64
40MB	(2) 4M x 36	(2) 1M x 36	None	None
40MB	None	(2) 4M x 36	(1) 1M x 64	None
48MB	(2) 4M x 36	(2) 2M x 36	None	None
64MB	(2) 8M x 36	None	None	None
64MB	None	None	(1) 8M x 64	None
64MB	(2) 4M x 36	(2) 4M x 36	None	None
64MB	(2) 4M x 36	None	None	(1) 4M x 64

Continued on next page. . .

# ABIT COMPUTER CORPORATION

## PR5 (REV. 1.01)

... continued from previous page

DIMM/DRAM CONFIGURATION (CON'T)				
Size	Bank 0	Bank 1	Bank 2	Bank 3
64MB	None	(2) 4M x 36	(1) 4M x 64	None
64MB	None	None	(1) 4M x 64	(1) 4M x 64
72MB	(2) 8M x 36	(2) 1M x 36	None	None
72MB	None	(2) 8M x 36	(1) 1M x 64	None
80MB	(2) 8M x 36	(2) 2M x 36	None	None
96MB	(2) 4M x 36	(2) 8M x 36	None	None
128MB	(2) 8M x 36	(2) 8M x 36	None	None
128MB	None	None	(1) 8M x 64	(1) 8M x 64

Note: Board accepts EDO memory. Banks 0 & 1 are interchangeable. Banks 2 & 3 are interchangeable.

DIMM VOLTAGE CONFIGURATION	
Voltage	JP11
3v	Pins 2 & 3 closed
5v	Pins 1 & 2 closed

CACHE CONFIGURATION		
Size	Bank 0	SL1
256KB (A)	(2) 32K x 32	Not installed
256KB (B)	None	256KB module installed
512KB (A)	(2) 32K x 32	256KB module installed
512KB (B)	(2) 64K x 32	Not installed
512KB (C)	None	512KB module installed

CACHE JUMPER CONFIGURATION	
Size	JP1
None	Open
256KB (A)	Open
256KB (B)	Open
512KB (A)	Closed
512KB (B)	Open
512KB (C)	Closed

CPU SPEED SELECTION (CYRIX PLL52C61-01 OR PLL52C61-21 CLOCK)							
CPU speed	Clock speed	Multiplier	DS/1	DS/2	DS/3 N	DS/3 T	DS/4N
120MHz	50MHz	2x	Off	On	On	N/A	On
133MHz	55MHz	2x	Off	On	On	N/A	Off
150MHz	60MHz	2x	Off	On	On	Off	On
166MHz	66MHz	2x	Off	On	Off	Off	On
200MHz	75MHz	2x	Off	On	On	N/A	Off

Note: N = normal mode. T = turbo mode.

Continued on next page. . .

# ABIT COMPUTER CORPORATION

## PR5 (REV. 1.01)

... continued from previous page

CPU SPEED SELECTION (CYRIX PLL52C61-01 OR PLL52C61-21 CLOCK, CON'T)							
CPU speed	Clock speed	Multiplier	DS/4 T	DS/5	DS/6	DS/7 N	DS/7 T
120MHz	50MHz	2x	N/A	Off	Off	On	N/A
133MHz	55MHz	2x	N/A	On	Off	On	N/A
150MHz	60MHz	2x	Off	On	Off	Off	On
166MHz	66MHz	2x	Off	On	Off	On	Off
200MHz	75MHz	2x	N/A	On	Off	Off	N/A

Note: N = normal mode. T = turbo mode.

CPU SPEED SELECTION (CYRIX PLL52C59-14T OR ICS9159-14 CLOCK)						
CPU speed	Clock speed	Multiplier	DS/1	DS/2	DS/3	DS/4
120MHz	50MHz	2x	Off	On	On	On
133MHz	55MHz	2x	Off	On	Off	Off
150MHz	60MHz	2x	Off	On	Off	On
166MHz	66MHz	2x	Off	On	On	Off
200MHz	75MHz	2x	Off	On	Off	Off

CPU SPEED SELECTION (CYRIX PLL52C59-14T OR ICS9159-14 CLOCK, CON'T)						
CPU speed	Clock speed	Multiplier	DS/5	DS/6	DS/7 N	DS/7 T
120MHz	50MHz	2x	Off	Off	Off	On
133MHz	55MHz	2x	On	Off	Off	N/A
150MHz	60MHz	2x	On	Off	Off	On
166MHz	66MHz	2x	On	Off	Off	On
200MHz	75MHz	2x	On	Off	On	N/A

Note: N = normal mode. T = turbo mode.

CPU SPEED SELECTION (AMD PLL52C61-01 OR PLL52C61-21 CLOCK)							
CPU speed	Clock speed	Multiplier	DS/1	DS/2	DS/3 N	DS/3 T	DS/4N
75MHz	50MHz	1.5x	Off	Off	On	N/A	On
90MHz	60MHz	1.5x	Off	Off	On	Off	On
100MHz	66MHz	1.5x	Off	Off	Off	Off	On
90MHz	60MHz	1.5x	Off	Off	On	Off	On
100MHz	66MHz	1.5x	Off	Off	Off	Off	On
120MHz	60MHz	2x	Off	On	On	Off	On
133MHz	66MHz	2x	Off	On	Off	Off	On

Note: N = normal mode. T = turbo mode.

Continued on next page. . .

# ABIT COMPUTER CORPORATION

## PR5 (REV. 1.01)

... continued from previous page

CPU SPEED SELECTION (AMD PLL52C61-01 OR PLL52C61-21 CLOCK, CON'T)							
CPU speed	Clock speed	Multiplier	DS/4 T	DS/5	DS/6	DS/7 N	DS/7 T
75MHz	50MHz	1.5x	N/A	Off	Off	On	N/A
90MHz	60MHz	1.5x	Off	On	Off	Off	On
100MHz	66MHz	1.5x	Off	On	Off	On	Off
90MHz	60MHz	1.5x	Off	On	Off	Off	On
100MHz	66MHz	1.5x	Off	On	Off	On	Off
120MHz	60MHz	2x	Off	On	Off	Off	On
133MHz	66MHz	2x	Off	On	Off	On	Off

Note: N = normal mode. T = turbo mode.

CPU SPEED SELECTION (AMD PLL52C59-14T OR ICS9159-14 CLOCK)							
CPU speed	Clock speed	Multiplier	DS/1	DS/2	DS/3	DS/4	
75MHz	50MHz	1.5x	Off	Off	On	On	
90MHz	60MHz	1.5x	Off	Off	Off	On	
100MHz	66MHz	1.5x	Off	Off	On	Off	
90MHz	60MHz	1.5x	Off	Off	Off	On	
100MHz	66MHz	1.5x	Off	Off	On	Off	
120MHz	60MHz	2x	Off	On	Off	On	
133MHz	66MHz	2x	Off	On	On	Off	

CPU SPEED SELECTION (AMD PLL52C59-14T OR ICS9159-14 CLOCK, CON'T)							
CPU speed	Clock speed	Multiplier	DS/5	DS/6	DS/7 N	DS/7 T	
75MHz	50MHz	1.5x	Off	Off	Off	N/A	
90MHz	60MHz	1.5x	On	Off	Off	On	
100MHz	66MHz	1.5x	On	Off	Off	On	
90MHz	60MHz	1.5x	On	Off	Off	On	
100MHz	66MHz	1.5x	On	Off	Off	On	
120MHz	60MHz	2x	On	Off	Off	On	
133MHz	66MHz	2x	On	Off	Off	On	

Note: N = normal mode. T = turbo mode.

CPU SPEED SELECTION (INTEL PLL52C61-01 OR PLL52C61-21 CLOCK)							
CPU speed	Clock speed	Multiplier	DS/1	DS/2	DS/3 N	DS/3 T	DS/4N
75MHz	50MHz	1.5x	Off	Off	On	N/A	On
90MHz	60MHz	1.5x	Off	Off	On	Off	On
100MHz	66MHz	1.5x	Off	Off	Off	Off	On
120MHz	60MHz	2x	Off	On	On	Off	On
133MHz	66MHz	2x	Off	On	Off	Off	On
150MHz	60MHz	2.5x	On	On	On	Off	On
166MHz	66MHz	2.5x	On	On	Off	Off	On
200MHz	66MHz	3x	On	Off	Off	Off	On

Note: N = normal mode. T = turbo mode.

Continued on next page. . .

# ABIT COMPUTER CORPORATION

## PR5 (REV. 1.01)

... continued from previous page

CPU SPEED SELECTION (INTEL PLL52C61-01 OR PLL52C61-21 CLOCK, CON'T)							
CPU speed	Clock speed	Multiplier	DS/4 T	DS/5	DS/6	DS/7 N	DS/7 T
75MHz	50MHz	1.5x	N/A	Off	Off	On	N/A
90MHz	60MHz	1.5x	Off	On	Off	Off	On
100MHz	66MHz	1.5x	Off	On	Off	On	Off
120MHz	60MHz	2x	Off	On	Off	Off	On
133MHz	66MHz	2x	Off	On	Off	On	Off
150MHz	60MHz	2.5x	Off	On	Off	Off	On
166MHz	66MHz	2.5x	Off	On	Off	On	Off
200MHz	66MHz	3x	Off	On	Off	On	Off

Note: N = normal mode. T = turbo mode.

CPU SPEED SELECTION (INTEL PLL52C59-14T OR ICS9159-14 CLOCK)						
CPU speed	Clock speed	Multiplier	DS/1	DS/2	DS/3	DS/4
75MHz	50MHz	1.5x	Off	Off	On	On
90MHz	60MHz	1.5x	Off	Off	Off	On
100MHz	66MHz	1.5x	Off	Off	On	Off
120MHz	60MHz	2x	Off	On	Off	On
133MHz	66MHz	2x	Off	On	On	Off
150MHz	60MHz	2.5x	On	On	Off	On
166MHz	66MHz	2.5x	On	On	On	Off
200MHz	66MHz	3x	On	Off	On	Off

CPU SPEED SELECTION (INTEL PLL52C59-14T OR ICS9159-14 CLOCK, CON'T)						
CPU speed	Clock speed	Multiplier	DS/5	DS/6	DS/7 N	DS/7 T
75MHz	50MHz	1.5x	Off	Off	Off	On
90MHz	60MHz	1.5x	On	Off	Off	On
100MHz	66MHz	1.5x	On	Off	Off	On
120MHz	60MHz	2x	On	Off	Off	On
133MHz	66MHz	2x	On	Off	Off	On
150MHz	60MHz	2.5x	On	Off	Off	On
166MHz	66MHz	2.5x	On	Off	Off	On
200MHz	66MHz	3x	On	Off	Off	On

Note: N = normal mode. T = turbo mode.

CPU VOLTAGE SELECTION (CYRIX)									
Voltage	V core	VC/1	VC/2	VC/3	VC/4	VC/5	VC/6	VC/7	VC/8
2.7v	3.3v	Off	Off	Off	Off	On	Off	Off	On
2.8v	3.3v	Off	Off	Off	On	Off	Off	Off	On
2.93v	3.3v	Off	Off	On	Off	Off	Off	Off	On
3.38v	3.3v	Off	On	Off	Off	Off	Off	Off	On
3.52v	3.3v	On	Off	Off	Off	Off	Off	Off	On

Continued on next page...

# ABIT COMPUTER CORPORATION

## PR5 (REV. 1.01)

... continued from previous page

CPU VOLTAGE SELECTION (AMD)									
Voltage	V core	VC/1	VC/2	VC/3	VC/4	VC/5	VC/6	VC/7	VC/8
2.7v	3.38v	Off	Off	Off	Off	On	Off	Off	On
2.8v	3.38v	Off	Off	Off	On	Off	Off	Off	On
2.93v	3.38v	Off	Off	On	Off	Off	Off	Off	On
3.38v	3.3v	Off	On	Off	Off	Off	Off	Off	On
3.52v	3.3v	On	Off	Off	Off	Off	Off	Off	On

CPU VOLTAGE SELECTION (INTEL)									
Voltage	V core	VC/1	VC/2	VC/3	VC/4	VC/5	VC/6	VC/7	VC/8
2.7v	3.3v	Off	Off	Off	Off	On	Off	On	Off
2.8v	3.3v	Off	Off	Off	On	Off	Off	On	Off
2.93v	3.3v	Off	Off	On	Off	Off	Off	On	Off
3.38v	3.3v	Off	On	Off	Off	Off	Off	On	Off
3.52v	3.3v	On	Off	Off	Off	Off	Off	On	Off