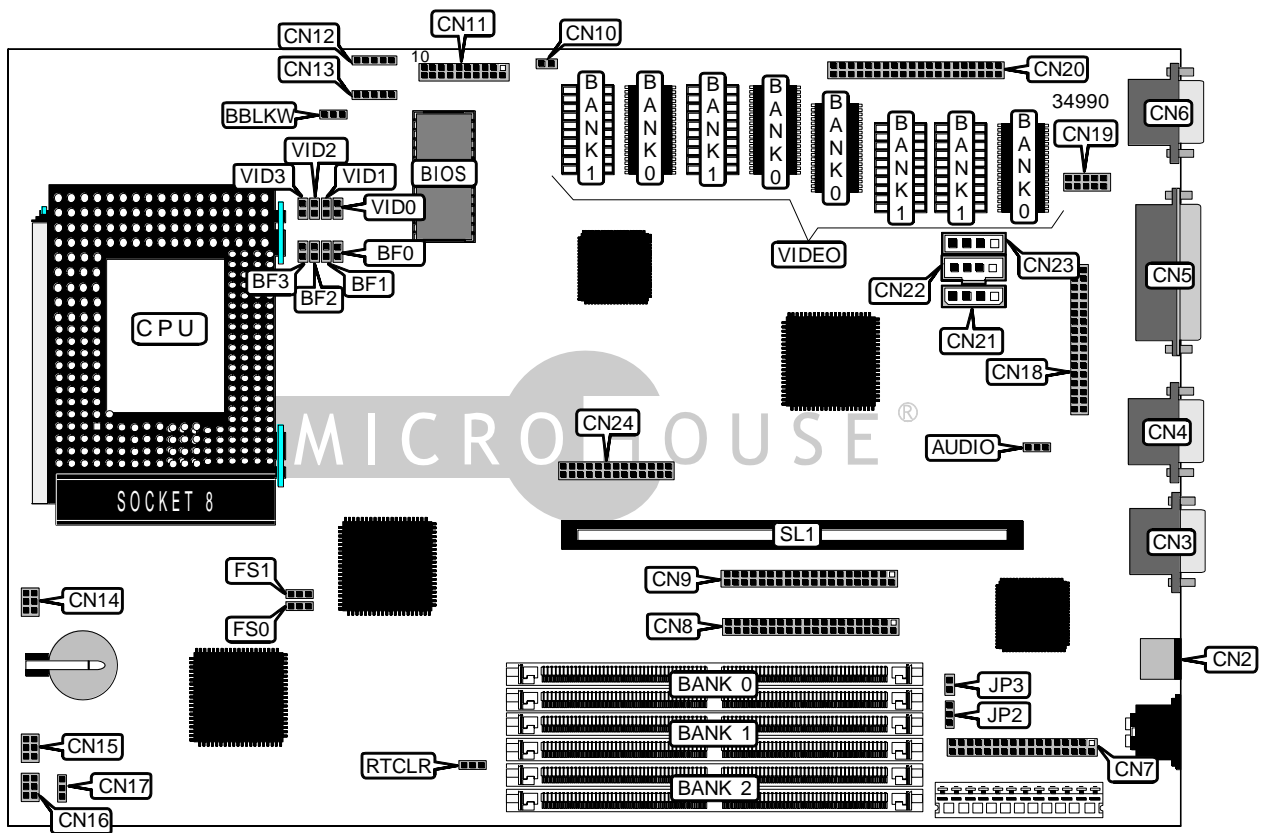


ASUS COMPUTER INTERNATIONAL

P/I AP6N (REV. 1.0)

Device Type	Mainboard
Processor	Pentium Pro
Processor Speed	150/166/180/200MHz
Chip Set	Intel 440FX
Maximum Onboard Memory	384MB (EDO supported)
Cache	256/512KB
BIOS	Unidentified
Video Chip Set	ATI
Maximum Video Memory	4MB
Video Types Supported	VGA
I/O Options	Floppy drive interface, IDE interfaces (2), parallel port, PS/2 mouse port, serial ports (2), VGA port, AMC connector, wavetable connector, USB connector, IR connector, audio connector, riser slot, Audio in - CD-ROM



Continued on next page. . .

ASUS COMPUTER INTERNATIONAL
P/I AP6N (Rev. 1.0)

... continued from previous page

CONNECTIONS			
Purpose	Location	Purpose	Location
PS/2 mouse port	CN2	Volume control	CN13
Serial port 1	CN3	Chassis fan power	CN14
Serial port 2	CN4	Chassis fan power	CN15
Parallel port	CN5	Chassis fan power	CN16
VGA port	CN6	AMC connector	CN17
Floppy drive interface	CN7	Audio connector	CN18
IDE interface 1	CN8	USB connector	CN19
IDE interface 2	CN9	AMC connector	CN20
IDE interface LED	CN10	Audio in - CD-ROM (Panasonic)	CN21
Power LED & Turbo LED	CN11/pins 2,3	Audio in - CD-ROM (Sony)	CN22
Green PC connector	CN11/pins 4,5	Audio in - CD-ROM (Mitsumi)	CN23
Reset switch	CN11/pins 9,10	Wavetable connector	CN24
Keylock	CN11/pins 14,15	ATX to AT power connector	JP2
Speaker	CN11/pins 17-20	Soft off power supply	JP3
IR connector	CN12	Riser slot	SL1

USER CONFIGURABLE SETTINGS		
Function	Label	Position
í CMOS memory normal operation	RTCLR	Pins 2 & 3 closed
CMOS memory clear	RTLCL	Pins 1 & 2 closed
í Flash BIOS write protect disabled	BBLKW	Pins 1 & 2 closed
Flash BIOS write protect enabled	BBLKW	Pins 2 & 3 closed
í Onboard audio enabled	AUDIO	Pins 1 & 2 closed
Onboard audio disabled	AUDIO	Pins 2 & 3 closed

DRAM CONFIGURATION			
Size	Bank 0	Bank 1	Bank 2
8MB	(2)1MB x 36	None	None
16MB	(2)1MB x 36	(2)1MB x 36	None
16MB	(2)2MB x 36	None	None
24MB	(2)1MB x 36	(2)1MB x 36	(2)1MB x 36
24MB	(2)2MB x 36	(2)1MB x 36	None
32MB	(2)2MB x 36	(2)2MB x 36	None
32MB	(2)4MB x 36	None	None
40MB	(2)4MB x 36	(2)1MB x 36	None
40MB	(2)2MB x 36	(2)2MB x 36	(2)1MB x 36
48MB	(2)2MB x 36	(2)2MB x 36	(2)2MB x 36
48MB	(2)4MB x 36	(2)2MB x 36	None
56MB	(2)4MB x 36	(2)2MB x 36	(2)1MB x 36
64MB	(2)4MB x 36	(2)2MB x 36	(2)2MB x 36
64MB	(2)4MB x 36	(2)4MB x 36	None
64MB	(2)8MB x 36	None	None
72MB	(2)8MB x 36	(2)1MB x 36	None
72MB	(2)4MB x 36	(2)4MB x 36	(2)1MB x 36

Continued on next page. . .

ASUS COMPUTER INTERNATIONAL
P/I AP6N (Rev. 1.0)

... continued from previous page

DRAM CONFIGURATION (CONT.)			
Size	Bank 0	Bank 1	Bank 2
80MB	(2)8MB x 36	(2)2MB x 36	None
80MB	(2)4MB x 36	(2)4MB x 36	(2)2MB x 36
88MB	(2)8MB x 36	(2)2MB x 36	(2)1MB x 36
96MB	(2)8MB x 36	(2)2MB x 36	(2)2MB x 36
96MB	(2)4MB x 36	(2)4MB x 36	(2)4MB x 36
96MB	(2)8MB x 36	(2)4MB x 36	None
104MB	(2)8MB x 36	(2)4MB x 36	(2)1MB x 36
112MB	(2)8MB x 36	(2)4MB x 36	(2)2MB x 36
128MB	(2)8MB x 36	(2)4MB x 36	(2)4MB x 36
128MB	(2)8MB x 36	(2)8MB x 36	None
128MB	(2)16MB x 36	None	None
136MB	(2)8MB x 36	(2)8MB x 36	(2)1MB x 36
144MB	(2)16MB x 36	(2)4MB x 36	None
144MB	(2)8MB x 36	(2)8MB x 36	(2)2MB x 36
152MB	(2)16MB x 36	(2)4MB x 36	(1)1MB x 36
160MB	(2)16MB x 36	(2)4MB x 36	(1)2MB x 36
160MB	(2)8MB x 36	(2)8MB x 36	(2)4MB x 36
192MB	(2)8MB x 36	(2)8MB x 36	(2)8MB x 36
192MB	(2)16MB x 36	(2)8MB x 36	None
200MB	(2)16MB x 36	(2)8MB x 36	(2)1MB x 36
208MB	(2)16MB x 36	(2)8MB x 36	(2)2MB x 36
224MB	(2)16MB x 36	(2)8MB x 36	(2)4MB x 36
256MB	(2)16MB x 36	(2)8MB x 36	(2)8MB x 36
256MB	(2)16MB x 36	(2)16MB x 36	None
264MB	(2)16MB x 36	(2)16MB x 36	(2)1MB x 36
272MB	(2)16MB x 36	(2)16MB x 36	(2)2MB x 36
288MB	(2)16MB x 36	(2)16MB x 36	(2)4MB x 36
320MB	(2)16MB x 36	(2)16MB x 36	(2)8MB x 36
384MB	(2)16MB x 36	(2)16MB x 36	(2)16MB x 36

VIDEO MEMORY CONFIGURATION		
Size	Bank 0	Bank 1
2MB	(4) 512KB	None
4MB	(4) 512KB	(4) 512KB

CPU SPEED SELECTION								
Speed	Clock Speed	Multiplier	FS0	FS1	BF0	BF1	BF2	BF3
150MHz	60MHz	2.5x	1 & 2	2 & 3	Open	Closed	Closed	Closed
166MHz	66MHz	2.5x	2 & 3	1 & 2	Open	Closed	Closed	Closed
180MHz	60MHz	3x	1 & 2	2 & 3	Closed	Open	Closed	Closed
200MHz	66MHz	3x	2 & 3	1 & 2	Closed	Open	Closed	Closed

Note: Numbers designate pins that should be closed.

Continued on next page. . .

ASUS COMPUTER INTERNATIONAL
P/I AP6N (Rev. 1.0)

... continued from previous page

CPU VOLTAGE SELECTION				
Voltage	VID0	VID1	VID2	VID3
Auto	Open	Open	Open	Open
2.1V	Closed	Open	Open	Open
2.2V	Open	Closed	Open	Open
2.3V	Closed	Closed	Open	Open
2.4V	Open	Open	Closed	Open
2.5V	Closed	Open	Closed	Open
2.6V	Open	Closed	Closed	Open
2.7V	Closed	Closed	Closed	Open
2.8V	Open	Open	Open	Closed
2.9V	Closed	Open	Open	Closed
3.0V	Open	Closed	Open	Closed
3.1V	Closed	Closed	Open	Closed
3.2V	Open	Open	Closed	Closed
3.3V	Closed	Open	Closed	Closed
3.4V	Open	Closed	Closed	Closed
3.5V	Closed	Closed	Closed	Closed