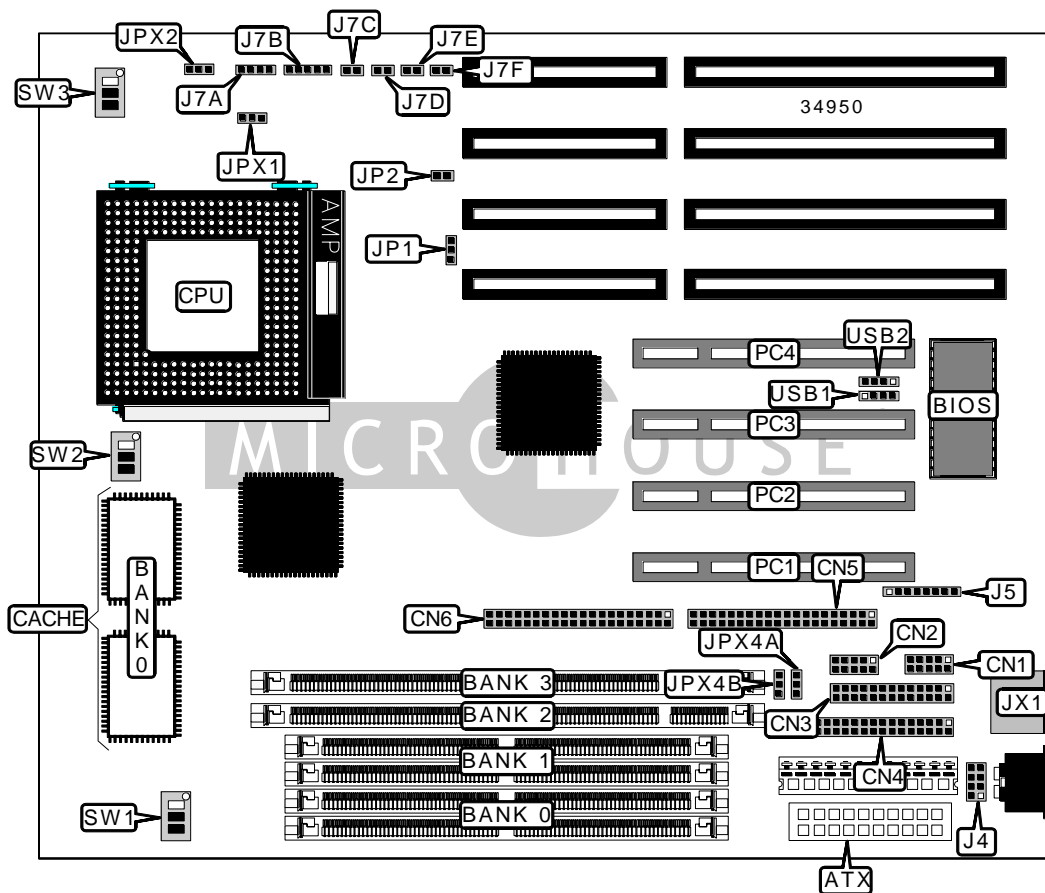


# AMPTRON INTERNATIONAL, INC.

## PM - 9800

<b>Device Type</b>	Mainboard
<b>Processor</b>	CX 6X86/IBM 6X86/CX 6X86L/IBM 6X86L/CX 686MX/IBM 6X86MX/ IDT C6/AM K5/AM K6/Pentium
<b>Processor Speed</b>	75/90/100/120/133/150/166/180/200/233MHz
<b>Chip Set</b>	Intel
<b>Video Chip Set</b>	None
<b>Maximum Onboard Memory</b>	256MB (EDO & SDRAM supported)
<b>Maximum Video Memory</b>	None
<b>Cache</b>	512KB
<b>BIOS</b>	AMI
<b>Dimensions</b>	254mm x 218mm
<b>I/O Options</b>	32-bit PCI slots (4), floppy drive interface, green PC connector, IDE interfaces (2), parallel port, PS/2 mouse port, PS/2 mouse interface, serial ports (2), IR connector, USB connectors (2), ATX power connector
<b>NPU Options</b>	None



Continued on next page. . .

AMPTRON INTERNATIONAL, INC.  
P M - 9 8 0 0

... continued from previous page

CONNECTIONS			
Purpose	Location	Purpose	Location
ATX power connector	ATX	Green PC connector	J7C
Serial port 1	CN1	Green PC LED	J7D
Serial port 2	CN2	IDE interface LED	J7E
Parallel port	CN3	Reset switch	J7F
Floppy drive interface	CN4	Soft off power supply	JP2
IDE interface 2	CN5	PS/2 mouse port	JX1
IDE interface 1	CN6	CPU fan power	JPX1
PS/2 mouse interface	J4	Chassis fan power	JPX2
IR connector	J5	32-bit PCI slots	PC1 – PC4
Speaker	J7A	USB connector 1	USB1
Power LED & keylock	J7B	USB connector 2	USB2

USER CONFIGURABLE SETTINGS		
Function	Label	Position
í CMOS memory normal operation	JP1	Pins 1 & 2 closed
CMOS memory clear	JP1	Pins 2 & 3 closed

SIMM CONFIGURATION		
Size	Bank 0	Bank 1
8MB	(2) 1M x 36	None
16MB	(2) 2M x 36	None
16MB	(2) 1M x 36	(2) 1M x 36
24MB	(2) 2M x 36	(2) 1M x 36
32MB	(2) 4M x 36	None
32MB	(2) 2M x 36	(2) 2M x 36
40MB	(2) 4M x 36	(2) 1M x 36
48MB	(2) 4M x 36	(2) 2M x 36
64MB	(2) 8M x 36	None
64MB	(2) 4M x 36	(2) 4M x 36
72MB	(2) 8M x 36	(2) 1M x 36
80MB	(2) 8M x 36	(2) 2M x 36
96MB	(2) 8M x 36	(2) 4M x 36
128MB	(2) 8M x 36	(2) 8M x 36
128MB	(2) 16M x 36	None

Continued on next page. . .

AMPTRON INTERNATIONAL, INC.  
 P M - 9 8 0 0

... continued from previous page

SIMM CONFIGURATION (CON'T)		
Size	Bank 0	Bank 1
136MB	(2) 16M x 36	(2) 1M x 36
144MB	(2) 16M x 36	(2) 2M x 36
160MB	(2) 16M x 36	(2) 4M x 36
192MB	(2) 16M x 36	(2) 8M x 36
256MB	(2) 16M x 36	(2) 16M x 36
Note: Board accepts EDO memory.		

DIMM CONFIGURATION		
Size	Bank 2	Bank 3
8MB	(1) 1M x 64	None
16MB	(1) 2M x 64	None
16MB	(1) 1M x 64	(1) 1M x 64
24MB	(1) 2M x 64	(1) 1M x 64
32MB	(1) 4M x 64	None
32MB	(1) 2M x 64	(1) 2M x 64
40MB	(1) 4M x 64	(1) 1M x 64
48MB	(1) 4M x 64	(1) 2M x 64
64MB	(1) 8M x 64	None
64MB	(1) 4M x 64	(1) 4M x 64
72MB	(1) 8M x 64	(1) 1M x 64
80MB	(1) 8M x 64	(1) 2M x 64
96MB	(1) 8M x 64	(1) 4M x 64
128MB	(1) 16M x 64	None
128MB	(1) 8M x 64	(1) 8M x 64
136MB	(1) 16M x 64	(1) 1M x 64
144MB	(1) 16M x 64	(1) 2M x 64
160MB	(1) 16M x 64	(1) 4M x 64
192MB	(1) 16M x 64	(1) 8M x 64
256MB	(1) 16M x 64	(1) 16M x 64
Note: Board accepts SDRAM memory.		

DIMM VOLTAGE CONFIGURATION		
Voltage	JPX4A	JPX4B
3.3v	Pins 2 & 3 closed	Pins 2 & 3 closed
5v	Pins 1 & 2 closed	Pins 1 & 2 closed

Continued on next page...

AMPTRON INTERNATIONAL, INC.  
 P M - 9 8 0 0

... continued from previous page

CACHE CONFIGURATION	
Size	Bank 0
512KB	(2) 64K x 32

CPU SPEED SELECTION (CX 6X86)								
CPU speed	Clock speed	Multiplier	SW1/1	SW1/2	SW1/3	SW3/1	SW3/2	SW3/3
120MHz	50MHz	2x	On	On	On	On	Off	N/A
150MHz	60MHz	2x	Off	Off	On	On	Off	N/A
166MHz	66MHz	2x	Off	Off	Off	On	Off	N/A

CPU SPEED SELECTION (IBM 6X86)								
CPU speed	Clock speed	Multiplier	SW1/1	SW1/2	SW1/3	SW3/1	SW3/2	SW3/3
120MHz	50MHz	2x	On	On	On	On	Off	N/A
150MHz	60MHz	2x	Off	Off	On	On	Off	N/A
166MHz	66MHz	2x	Off	Off	Off	On	Off	N/A

CPU SPEED SELECTION (CX 6X86L)								
CPU speed	Clock speed	Multiplier	SW1/1	SW1/2	SW1/3	SW3/1	SW3/2	SW3/3
166MHz	66MHz	2x	Off	Off	Off	On	Off	N/A

CPU SPEED SELECTION (IBM 6X86L)								
CPU speed	Clock speed	Multiplier	SW1/1	SW1/2	SW1/3	SW3/1	SW3/2	SW3/3
166MHz	66MHz	2x	Off	Off	Off	On	Off	N/A

CPU SPEED SELECTION (CX 6X86MX)								
CPU speed	Clock speed	Multiplier	SW1/1	SW1/2	SW1/3	SW3/1	SW3/2	SW3/3
166MHz	66MHz	2x	Off	Off	Off	On	Off	N/A

CPU SPEED SELECTION (IBM 6X86MX)								
CPU speed	Clock speed	Multiplier	SW1/1	SW1/2	SW1/3	SW3/1	SW3/2	SW3/3
166MHz	66MHz	2x	Off	Off	Off	On	Off	N/A

CPU SPEED SELECTION (IDT C6)								
CPU speed	Clock speed	Multiplier	SW1/1	SW1/2	SW1/3	SW3/1	SW3/2	SW3/3
200MHz	66MHz	3x	Off	Off	Off	Off	On	N/A

Continued on next page. . .

AMPTRON INTERNATIONAL, INC.  
P M - 9 8 0 0

... continued from previous page

CPU SPEED SELECTION (AM K5)								
CPU speed	Clock speed	Multiplier	SW1/1	SW1/2	SW1/3	SW3/1	SW3/2	SW3/3
75MHz	50MHz	1.5x	On	On	On	Off	Off	N/A
100MHz	66MHz	1.5x	Off	Off	Off	Off	Off	N/A
120MHz	60MHz	1.5x	Off	Off	On	Off	Off	N/A
133MHz	66MHz	1.5x	Off	Off	Off	Off	Off	N/A
150MHz	60MHz	2.5x	Off	Off	On	On	On	N/A
166MHz	66MHz	2.5x	Off	Off	Off	On	On	N/A

CPU SPEED SELECTION (AM K6)								
CPU speed	Clock speed	Multiplier	SW1/1	SW1/2	SW1/3	SW3/1	SW3/2	SW3/3
166MHz	66MHz	2.5x	Off	Off	Off	On	On	N/A
200MHz	66MHz	3x	Off	Off	Off	Off	On	N/A
233MHz	66MHz	3.5x	Off	Off	Off	Off	Off	Off

CPU SPEED SELECTION (INTEL)								
CPU speed	Clock speed	Multiplier	SW1/1	SW1/2	SW1/3	SW3/1	SW3/2	SW3/3
75MHz	50MHz	1.5x	On	On	On	Off	Off	N/A
90MHz	60MHz	1.5x	Off	Off	On	Off	Off	N/A
100MHz	66MHz	1.5x	Off	Off	Off	Off	Off	N/A
120MHz	60MHz	2x	Off	Off	On	On	Off	N/A
133MHz	66MHz	2x	Off	Off	Off	On	Off	N/A
150MHz	60MHz	2.5x	Off	Off	On	On	On	N/A
166MHz	66MHz	2.5x	Off	Off	Off	On	On	N/A
180MHz	60MHz	3x	Off	Off	On	Off	On	N/A
200MHz	66MHz	3x	Off	Off	Off	Off	On	N/A

CPU SPEED SELECTION (INTEL MMX)								
CPU speed	Clock speed	Multiplier	SW1/1	SW1/2	SW1/3	SW3/1	SW3/2	SW3/3
166MHz	66MHz	2.5x	Off	Off	Off	On	On	N/A
200MHz	66MHz	3x	Off	Off	Off	Off	On	N/A
233MHz	66MHz	3.5x	Off	Off	Off	Off	Off	Off

Continued on next page. . .

AMPTRON INTERNATIONAL, INC.  
PM-9800

... continued from previous page

CPU VOLTAGE SELECTION			
Voltage	SW2/1	SW2/2	SW2/3
2.5v	On	Off	On
2.8v	On	Off	Off
2.9v	Off	On	On
3.0v	Off	Off	Off
3.0v	On	On	On
3.2v	Off	On	Off
3.3v	Off	Off	On
3.5v	On	On	Off