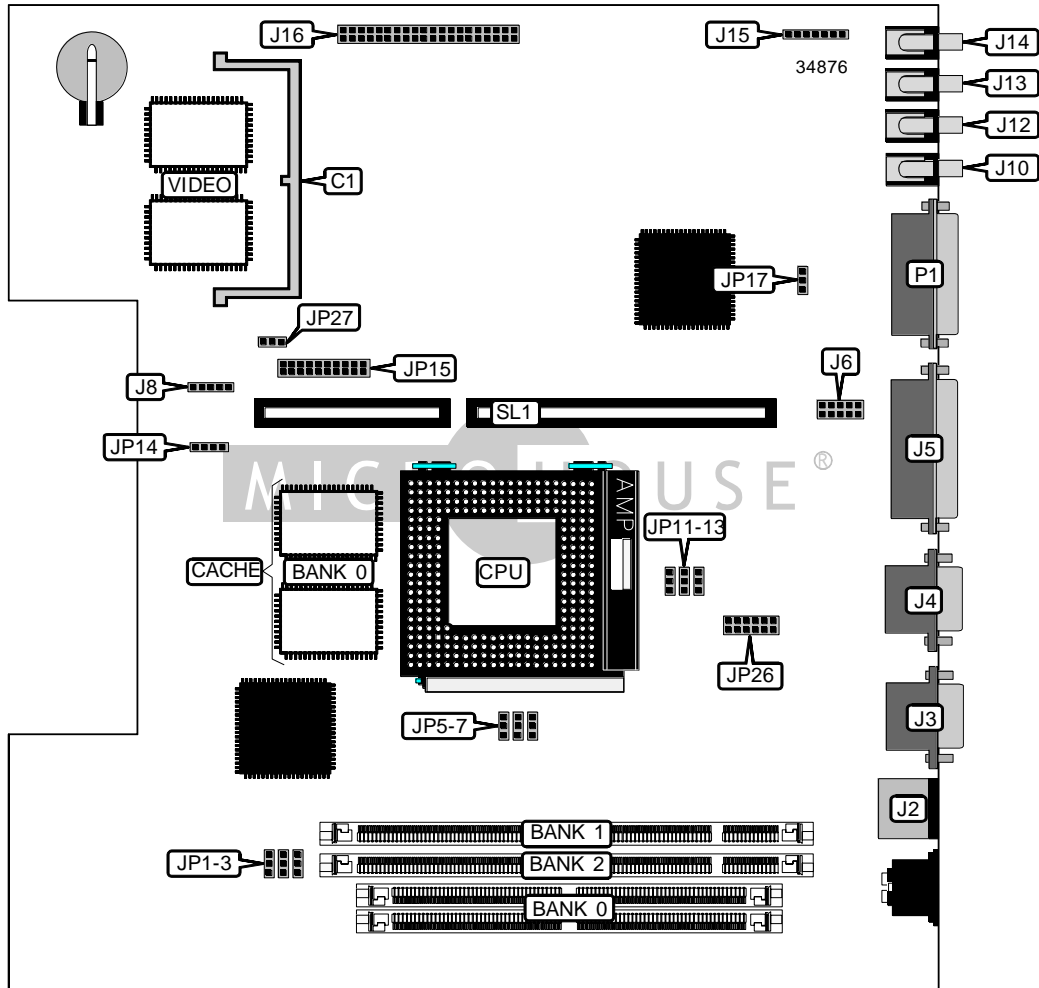


# ELITEGROUP COMPUTER SYSTEMS, INC.

## MONIPUTER

<b>Device Type</b>	Mainboard
<b>Processor</b>	CX 6X86/IBM 6X86/CX 686MX/IBM 6X86MX/AM K5/AM K6/Pentium
<b>Processor Speed</b>	75/90/100/120/133/150/166/200/233MHz
<b>Chip Set</b>	Intel
<b>Video Chip Set</b>	ATI
<b>Maximum Onboard Memory</b>	256MB (EDO & SDRAM supported)
<b>Maximum Video Memory</b>	4MB
<b>Cache</b>	256/512KB
<b>BIOS</b>	Unidentified
<b>Dimensions</b>	254mm x 218mm
<b>I/O Options</b>	Game/MIDI port, parallel port, PS/2 mouse port, serial ports (2), VGA feature connector, riser slot, line in, line out, TV line in, modem line in, TV tuner connector
<b>NPU Options</b>	None



Continued on next page...

ELITEGROUP COMPUTER SYSTEMS, INC.  
MONIPUTER

... continued from previous page

CONNECTIONS			
Purpose	Location	Purpose	Location
Video memory bracket	C1	TV line in	J13
PS/2 mouse port	J2	Modem line in	J14
Serial port 1	J3	Internal modem audio	J15
Serial port 2	J4	ATI feature connector	J16
Parallel port	J5	CPU fan power	JP14
USB connector	J6	VGA interface	JP15
TV tuner connector	J8	Game/MIDI port	P1
Line in	J10	Riser slot	SL1
Line out	J12		

USER CONFIGURABLE SETTINGS		
Function	Label	Position
í Password normal operation	JP17	Pins 2 & 3 closed
Password clear	JP17	Pins 1 & 2 closed
On board video enabled	JP27	Pins 2 & 3 closed
On board video disabled	JP27	Pins 1 & 2 closed

SIMM CONFIGURATION	
Size	Bank 0
8MB	(2) 1M x 36
16MB	(2) 2M x 36
32MB	(2) 4M x 36
64MB	(2) 8M x 36
128MB	(2) 16M x 36
256MB	(2) 32M x 36

Note: Board accepts EDO memory.

DIMM CONFIGURATION		
Size	Bank 1	Bank 2
8MB	(1) 1M x 64	None
16MB	(1) 2M x 64	None
16MB	(1) 1M x 64	(1) 1M x 64
24MB	(1) 2M x 64	(1) 1M x 64
32MB	(1) 4M x 64	None
32MB	(1) 2M x 64	(1) 2M x 64
40MB	(1) 4M x 64	(1) 1M x 64
48MB	(1) 4M x 64	(1) 2M x 64
64MB	(1) 8M x 64	None

Continued on next page...

ELITEGROUP COMPUTER SYSTEMS, INC.  
MONIPUTER

... continued from previous page

DIMM CONFIGURATION (CON'T)		
Size	Bank 1	Bank 2
64MB	(1) 4M x 64	(1) 4M x 64
72MB	(1) 8M x 64	(1) 1M x 64
80MB	(1) 8M x 64	(1) 2M x 64
96MB	(1) 8M x 64	(1) 4M x 64
128MB	(1) 16M x 64	None
128MB	(1) 8M x 64	(1) 8M x 64
136MB	(1) 16M x 64	(1) 1M x 64
144MB	(1) 16M x 64	(1) 2M x 64
160MB	(1) 16M x 64	(1) 4M x 64
192MB	(1) 16M x 64	(1) 8M x 64
256MB	(1) 16M x 64	(1) 16M x 64

Note: Board accepts SDRAM memory.

DIMM/SIMM VOLTAGE CONFIGURATION			
Voltage	JP1	JP2	JP3
3.3v	Pins 2 & 3 closed	Pins 2 & 3 closed	Pins 2 & 3 closed
5v	Pins 1 & 2 closed	Pins 1 & 2 closed	Pins 1 & 2 closed

CACHE CONFIGURATION	
Size	Bank 0
256KB	(2) 32K x 32
512KB	(2) 64K x 32

VIDEO MEMORY CONFIGURATION  
Note: Board accepts 2MB/4MB video memory. The configuration is unidentified.

CPU SPEED SELECTION (CX 6X86)								
CPU speed	Clock speed	Multiplier	JP5	JP6	JP7	JP11	JP12	JP13
120MHz	50MHz	2x	2 & 3	2 & 3	2 & 3	2 & 3	1 & 2	2 & 3
133MHz	55MHz	2x	2 & 3	2 & 3	1 & 2	2 & 3	1 & 2	2 & 3
150MHz	60MHz	2x	1 & 2	2 & 3	2 & 3	2 & 3	1 & 2	2 & 3
166MHz	66MHz	2x	2 & 3	1 & 2	2 & 3	2 & 3	1 & 2	2 & 3
200MHz	75MHz	2x	1 & 2	2 & 3	1 & 2	2 & 3	1 & 2	2 & 3

Note: Pins designated should be in the closed position.

Continued on next page...

# ELITEGROUP COMPUTER SYSTEMS, INC.

## MONI P U T E R

... continued from previous page

CPU SPEED SELECTION (IBM 6X86)								
CPU speed	Clock speed	Multiplier	JP5	JP6	JP7	JP11	JP12	JP13
120MHz	50MHz	2x	2 & 3	2 & 3	2 & 3	2 & 3	1 & 2	2 & 3
133MHz	55MHz	2x	2 & 3	2 & 3	1 & 2	2 & 3	1 & 2	2 & 3
150MHz	60MHz	2x	1 & 2	2 & 3	2 & 3	2 & 3	1 & 2	2 & 3
166MHz	66MHz	2x	2 & 3	1 & 2	2 & 3	2 & 3	1 & 2	2 & 3
200MHz	75MHz	2x	1 & 2	2 & 3	1 & 2	2 & 3	1 & 2	2 & 3

Note: Pins designated should be in the closed position.

CPU SPEED SELECTION (CX 6X86MX)								
CPU speed	Clock speed	Multiplier	JP5	JP6	JP7	JP11	JP12	JP13
150MHz	75MHz	2x	1 & 2	2 & 3	1 & 2	2 & 3	1 & 2	2 & 3

Note: Pins designated should be in the closed position.

CPU SPEED SELECTION (IBM 6X86MX)								
CPU speed	Clock speed	Multiplier	JP5	JP6	JP7	JP11	JP12	JP13
150MHz	75MHz	2x	1 & 2	2 & 3	1 & 2	2 & 3	1 & 2	2 & 3

Note: Pins designated should be in the closed position.

CPU SPEED SELECTION (AM K5)								
CPU speed	Clock speed	Multiplier	JP5	JP6	JP7	JP11	JP12	JP13
75MHz	50MHz	1.5x	2 & 3	2 & 3	2 & 3	2 & 3	1 & 2	1 & 2
90MHz	60MHz	1.5x	1 & 2	2 & 3	2 & 3	2 & 3	1 & 2	1 & 2
100MHz	66MHz	1.5x	2 & 3	1 & 2	2 & 3	2 & 3	1 & 2	1 & 2
120MHz	60MHz	2x	1 & 2	2 & 3	2 & 3	2 & 3	1 & 2	2 & 3
133MHz	66MHz	2x	2 & 3	1 & 2	2 & 3	2 & 3	1 & 2	2 & 3
150MHz	60MHz	2.5x	1 & 2	2 & 3	2 & 3	2 & 3	2 & 3	2 & 3
166MHz	66MHz	2.5x	2 & 3	1 & 2	2 & 3	2 & 3	2 & 3	2 & 3

Note: Pins designated should be in the closed position.

CPU SPEED SELECTION (AM K6)								
CPU speed	Clock speed	Multiplier	JP5	JP6	JP7	JP11	JP12	JP13
200MHz	66MHz	3x	2 & 3	1 & 2	2 & 3	2 & 3	2 & 3	1 & 2
233MHz	66MHz	3.5x	2 & 3	1 & 2	2 & 3	2 & 3	1 & 2	1 & 2

Note: Pins designated should be in the closed position.

Continued on next page. . .

ELITEGROUP COMPUTER SYSTEMS, INC.  
MONIPUTER

... continued from previous page

CPU SPEED SELECTION (INTEL)								
CPU speed	Clock speed	Multiplier	JP5	JP6	JP7	JP11	JP12	JP13
75MHz	50MHz	1.5x	2 & 3	2 & 3	2 & 3	2 & 3	1 & 2	1 & 2
90MHz	60MHz	1.5x	1 & 2	2 & 3	2 & 3	2 & 3	1 & 2	1 & 2
100MHz	66MHz	1.5x	2 & 3	1 & 2	2 & 3	2 & 3	1 & 2	1 & 2
120MHz	60MHz	2x	1 & 2	2 & 3	2 & 3	2 & 3	1 & 2	2 & 3
133MHz	66MHz	2x	2 & 3	1 & 2	2 & 3	2 & 3	1 & 2	2 & 3
150MHz	60MHz	2.5x	1 & 2	2 & 3	2 & 3	2 & 3	2 & 3	2 & 3
166MHz	66MHz	2.5x	2 & 3	1 & 2	2 & 3	2 & 3	2 & 3	2 & 3
200MHz	66MHz	3x	2 & 3	1 & 2	2 & 3	2 & 3	2 & 3	1 & 2

Note: Pins designated should be in the closed position.

CPU SPEED SELECTION (INTEL MMX)								
CPU speed	Clock speed	Multiplier	JP5	JP6	JP7	JP11	JP12	JP13
166MHz	66MHz	2.5x	2 & 3	1 & 2	2 & 3	2 & 3	2 & 3	2 & 3
200MHz	66MHz	3x	2 & 3	1 & 2	2 & 3	2 & 3	2 & 3	1 & 2
233MHz	66MHz	3.5x	2 & 3	1 & 2	2 & 3	2 & 3	1 & 2	1 & 2

Note: Pins designated should be in the closed position.

CPU VOLTAGE SELECTION					
Voltage	JP26/pins 1 & 2	JP26/pins 3 & 4	JP26/pins 7 & 8	JP26/pins 9 & 10	JP26/pins 11 & 12
2.5v	Open	Open	Open	Open	Closed
2.8v	Open	Open	Open	Closed	Open
2.9v	Open	Open	Closed	Open	Open
3.2v	Open	Closed	Open	Open	Open
3.3v	Closed	Open	Open	Open	Open