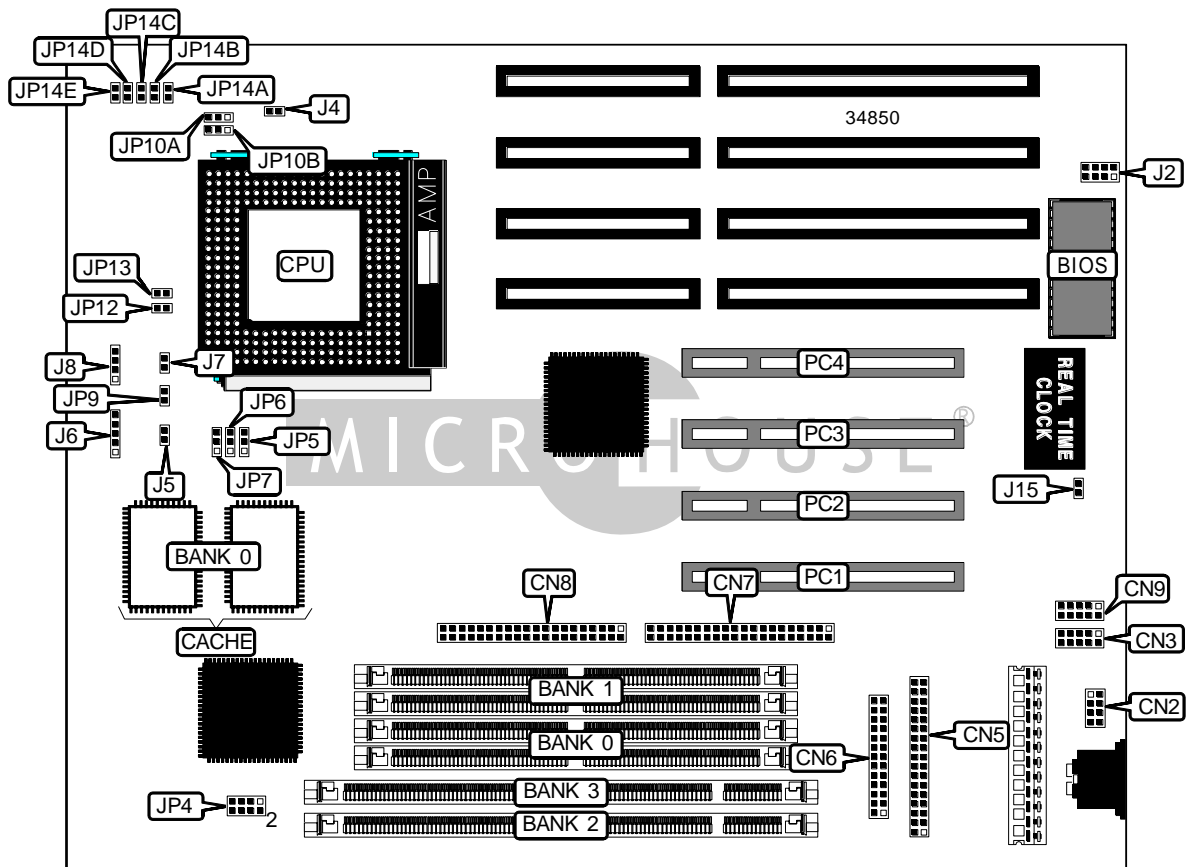


KADATCO CO., LTD.
 A M - 5 3 9

Device Type	Mainboard
Processor	CX 6X86/CX 6X86L/CX M2/IBM 6X86/IBM6X86L/IBM M2/AM K5/ AM K6/Pentium
Processor Speed	75/90/100/120/133/150/166/180/200/233MHz
Chip Set	Intel
Video Chip Set	None
Maximum Onboard Memory	384MB (EDO & SDRAM supported)
Maximum Video Memory	None
Cache	512KB
BIOS	AMI
Dimensions	254mm x 218mm
I/O Options	32-bit PCI slots (4), floppy drive interface, IDE interfaces (2), parallel port, PS/2 mouse interface, serial ports (2), USB connector
NPU Options	None



Continued on next page. . .

... continued from previous page

CONNECTIONS			
Purpose	Location	Purpose	Location
Serial port 2	CN2	Chassis fan power	J4
PS/2 mouse interface	CN3	IDE interface LED	J5
Serial port 1	CN5	Power LED & keylock	J6
Floppy drive interface	CN6	Reset switch	J7
Parallel port	CN7	Speaker	J8
IDE interface 2	CN8	Turbo LED	JP9
IDE interface 1	CN9	32-bit PCI slots	PC1 – PC4
USB connector	J2		

USER CONFIGURABLE SETTINGS		
Function	Label	Position
í CMOS memory normal operation	J15	Pins 1 & 2 closed
CMOS memory clear	J15	Pins 2 & 3 closed

SIMM CONFIGURATION		
Size	Bank 0	Bank 1
8MB	(2) 1M x 36	None
16MB	(2) 2M x 36	None
16MB	(2) 1M x 36	(2) 1M x 36
24MB	(2) 2M x 36	(2) 1M x 36
32MB	(2) 4M x 36	None
32MB	(2) 2M x 36	(2) 2M x 36
40MB	(2) 4M x 36	(2) 1M x 36
48MB	(2) 4M x 36	(2) 2M x 36
64MB	(2) 8M x 36	None
64MB	(2) 4M x 36	(2) 4M x 36
72MB	(2) 8M x 36	(2) 1M x 36
80MB	(2) 8M x 36	(2) 2M x 36
96MB	(2) 8M x 36	(2) 4M x 36
128MB	(2) 8M x 36	(2) 8M x 36
128MB	(2) 16M x 36	None
136MB	(2) 16M x 36	(2) 1M x 36
144MB	(2) 16M x 36	(2) 2M x 36
160MB	(2) 16M x 36	(2) 4M x 36
192MB	(2) 16M x 36	(2) 8M x 36
256MB	(2) 16M x 36	(2) 16M x 36

Note: Board accepts EDO memory.

Continued on next page...

... continued from previous page

DIMM CONFIGURATION		
Size	Bank 0	Bank 1
8MB	(1) 1M x 64	None
16MB	(1) 2M x 64	None
16MB	(1) 1M x 64	(1) 1M x 64
24MB	(1) 2M x 64	(1) 1M x 64
32MB	(1) 4M x 64	None
32MB	(1) 2M x 64	(1) 2M x 64
40MB	(1) 4M x 64	(1) 1M x 64
48MB	(1) 4M x 64	(1) 2M x 64
64MB	(1) 8M x 64	None
64MB	(1) 4M x 64	(1) 4M x 64
72MB	(1) 8M x 64	(1) 1M x 64
80MB	(1) 8M x 64	(1) 2M x 64
96MB	(1) 8M x 64	(1) 4M x 64
128MB	(1) 8M x 64	(1) 8M x 64

Note: Board accepts SDRAM memory. For maximum memory of 384MB, fully populate all 4 banks.

DIMM VOLTAGE CONFIGURATION	
Voltage	JP4
3.3v	Pins 1 & 2, 3 & 4 closed
5v	Pins 5 & 6, 7 & 8 closed

CACHE CONFIGURATION	
Size	Bank 0
512KB	(2) 64K x 32

CPU SPEED SELECTION (CX 6X86)							
CPU speed	Clock speed	Multiplier	JP5	JP6	JP7	JP12	JP13
120MHz	50MHz	2x	2 & 3	2 & 3	2 & 3	Open	Closed
150MHz	60MHz	2x	1 & 2	2 & 3	2 & 3	Open	Closed
166MHz	66MHz	2x	2 & 3	1 & 2	2 & 3	Open	Closed

Note: Pins designated should be in the closed position.

CPU SPEED SELECTION (IBM 6X86)							
CPU speed	Clock speed	Multiplier	JP5	JP6	JP7	JP12	JP13
120MHz	50MHz	2x	2 & 3	2 & 3	2 & 3	Open	Closed
150MHz	60MHz	2x	1 & 2	2 & 3	2 & 3	Open	Closed
166MHz	66MHz	2x	2 & 3	1 & 2	2 & 3	Open	Closed

Note: Pins designated should be in the closed position.

Continued on next page. . .

KADATCO CO., LTD.
A M - 5 3 9

... continued from previous page

CPU SPEED SELECTION (CX 6X86L)							
CPU speed	Clock speed	Multiplier	JP5	JP6	JP7	JP12	JP13
150MHz	60MHz	2x	1 & 2	2 & 3	2 & 3	Open	Closed
166MHz	66MHz	2x	2 & 3	1 & 2	2 & 3	Open	Closed
200MHz	75MHz	2x	1 & 2	2 & 3	1 & 2	Open	Closed

Note: Pins designated should be in the closed position.

CPU SPEED SELECTION (IBM 6X86L)							
CPU speed	Clock speed	Multiplier	JP5	JP6	JP7	JP12	JP13
150MHz	60MHz	2x	1 & 2	2 & 3	2 & 3	Open	Closed
166MHz	66MHz	2x	2 & 3	1 & 2	2 & 3	Open	Closed
200MHz	75MHz	2x	1 & 2	2 & 3	1 & 2	Open	Closed

Note: Pins designated should be in the closed position.

CPU SPEED SELECTION (CX M2)							
CPU speed	Clock speed	Multiplier	JP5	JP6	JP7	JP12	JP13
166MHz	66MHz	2.5x	2 & 3	1 & 2	2 & 3	Closed	Closed
200MHz	66MHz	3x	2 & 3	1 & 2	2 & 3	Closed	Open

Note: Pins designated should be in the closed position.

CPU SPEED SELECTION (IBM M2)							
CPU speed	Clock speed	Multiplier	JP5	JP6	JP7	JP12	JP13
166MHz	66MHz	2.5x	2 & 3	1 & 2	2 & 3	Closed	Closed
200MHz	66MHz	3x	2 & 3	1 & 2	2 & 3	Closed	Open

Note: Pins designated should be in the closed position.

CPU SPEED SELECTION (AM K5)							
CPU speed	Clock speed	Multiplier	JP5	JP6	JP7	JP12	JP13
75MHz	50MHz	1.5x	2 & 3	2 & 3	2 & 3	Open	Open
90MHz	60MHz	1.5x	1 & 2	2 & 3	2 & 3	Open	Open
100MHz	66MHz	1.5x	2 & 3	1 & 2	2 & 3	Open	Open
120MHz	60MHz	Reserved	1 & 2	2 & 3	2 & 3	Open	Closed
133MHz	66MHz	Reserved	2 & 3	1 & 2	2 & 3	Open	Closed
150MHz	60MHz	2.5x	1 & 2	2 & 3	2 & 3	Closed	Closed
166MHz	66MHz	2.5x	2 & 3	1 & 2	2 & 3	Closed	Closed
180MHz	60MHz	3x	1 & 2	2 & 3	2 & 3	Closed	Open
200MHz	66MHz	3x	2 & 3	1 & 2	2 & 3	Closed	Open

Note: Pins designated should be in the closed position.

Continued on next page. . .

KADATCO CO., LTD.
A M - 5 3 9

... continued from previous page

CPU SPEED SELECTION (AM K6)							
CPU speed	Clock speed	Multiplier	JP5	JP6	JP7	JP12	JP13
166MHz	66MHz	2.5x	2 & 3	1 & 2	2 & 3	Closed	Closed
200MHz	66MHz	3x	2 & 3	1 & 2	2 & 3	Closed	Open
233MHz	66MHz	3.5x	2 & 3	1 & 2	2 & 3	Open	Open

Note: Pins designated should be in the closed position.

CPU SPEED SELECTION (INTEL)							
CPU speed	Clock speed	Multiplier	JP5	JP6	JP7	JP12	JP13
75MHz	50MHz	1.5x	2 & 3	2 & 3	2 & 3	Open	Open
90MHz	60MHz	1.5x	1 & 2	2 & 3	2 & 3	Open	Open
100MHz	66MHz	1.5x	2 & 3	1 & 2	2 & 3	Open	Open
120MHz	60MHz	2x	1 & 2	2 & 3	2 & 3	Open	Closed
133MHz	66MHz	2x	2 & 3	1 & 2	2 & 3	Open	Closed
150MHz	60MHz	2.5x	1 & 2	2 & 3	2 & 3	Closed	Closed
166MHz	66MHz	2.5x	2 & 3	1 & 2	2 & 3	Closed	Closed
180MHz	60MHz	3x	1 & 2	2 & 3	2 & 3	Closed	Open
200MHz	66MHz	3x	2 & 3	1 & 2	2 & 3	Closed	Open

Note: Pins designated should be in the closed position.

CPU SPEED SELECTION (INTEL MMX)							
CPU speed	Clock speed	Multiplier	JP5	JP6	JP7	JP12	JP13
166MHz	66MHz	2.5x	2 & 3	1 & 2	2 & 3	Closed	Closed
200MHz	66MHz	3x	2 & 3	1 & 2	2 & 3	Closed	Open
233MHz	66MHz	3.5x	2 & 3	1 & 2	2 & 3	Open	Open

Note: Pins designated should be in the closed position.

CPU SPEED SELECTION (IDT C6)							
CPU speed	Clock speed	Multiplier	JP5	JP6	JP7	JP12	JP13
180MHz	60MHz	3x	1 & 2	2 & 3	2 & 3	Closed	Open
200MHz	66MHz	3x	2 & 3	1 & 2	2 & 3	Closed	Open

Note: Pins designated should be in the closed position.

Continued on next page. . .

KADATCO CO., LTD.
 A M - 5 3 9

... continued from previous page

CPU TYPE SELECTION		
Type	JP10A	JP10B
AM K5	Pins 1 & 2 closed	Pins 1 & 2 closed
AM K6	Pins 2 & 3 closed	Pins 2 & 3 closed
CX 6X86	Pins 1 & 2 closed	Pins 1 & 2 closed
CX 6X86L	Pins 2 & 3 closed	Pins 2 & 3 closed
CX M2	Pins 2 & 3 closed	Pins 2 & 3 closed
IBM 6X86	Pins 1 & 2 closed	Pins 1 & 2 closed
IBM 6X86L	Pins 2 & 3 closed	Pins 2 & 3 closed
IBM M2	Pins 2 & 3 closed	Pins 2 & 3 closed
IDT C6	Pins 1 & 2 closed	Pins 1 & 2 closed
P54C	Pins 1 & 2 closed	Pins 1 & 2 closed
P55C	Pins 2 & 3 closed	Pins 2 & 3 closed

CPU VOLTAGE SELECTION					
Voltage	JP14A	JP14B	JP14C	JP14D	JP14E
2.5v	Open	Open	Open	Open	Open
2.8v	Open	Open	Open	Open	Closed
2.9v	Open	Open	Open	Closed	Open
3.2v	Open	Open	Closed	Open	Open
3.3v	Open	Closed	Open	Open	Open
3.5v	Closed	Open	Open	Open	Open